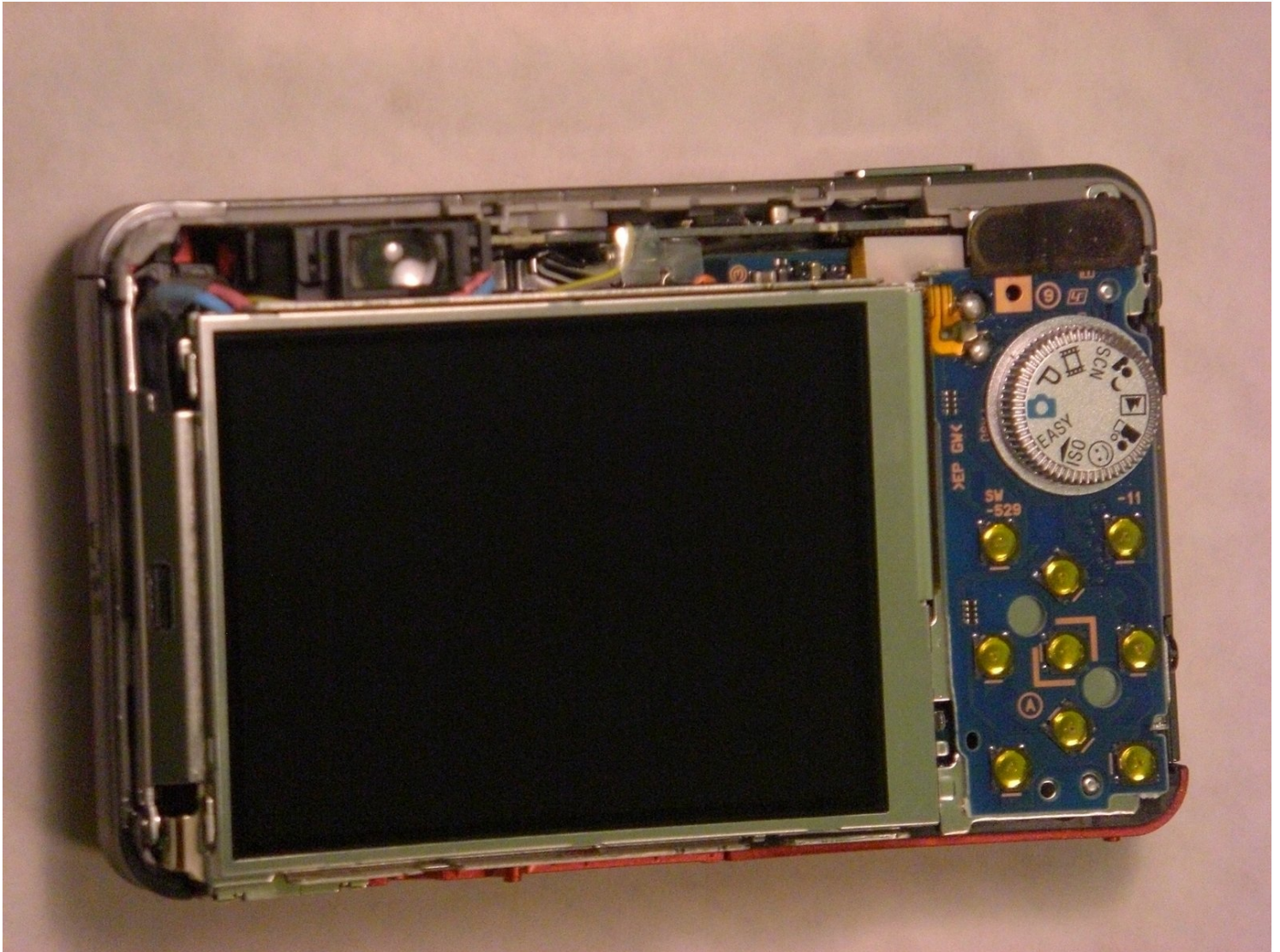




Sony Cyber-shot DSC-W150 LCD Screen Replacement

This guide will instruct you on how to replace...

Written By: Brent Clavin



INTRODUCTION

This guide will instruct you on how to replace a defective LCD screen in the Sony Cyber-shot DSC-W150. To successfully remove the screen a screwdriver is used to remove a screw, a spudger, and tweezers to remove electrical ribbons.

TOOLS:

Phillips #0 Screwdriver (1)

Tweezers (1)


Phillips #00 Screwdriver (1)

Spudger (1)

Soldering Workstation (1)

Step 1 — Back Casing



 **The screws from the camera are extremely small, so it is a good idea to have a small container to hold all the screws as you remove them.**

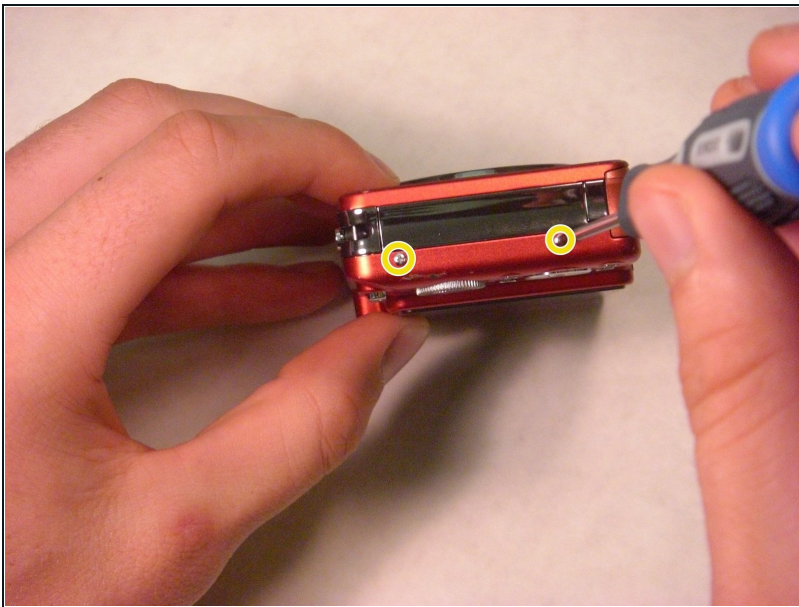
Step 2



- Take your screwdriver and remove the four silver bottom screws of the camera.

ⓘ The picture shows the lens facing away from you and the LCD facing you.

Step 3



- On the right side of the camera, remove the two silver screws using the screwdriver.

ⓘ The picture shows the lens facing away from you and the LCD screen facing you.

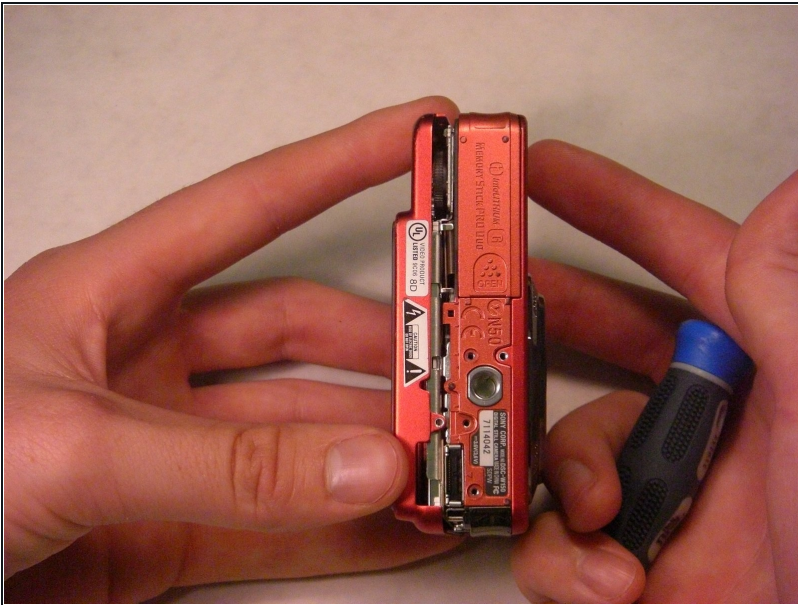
Step 4



- On the left side of the camera, remove the two silver screws using the screwdriver.

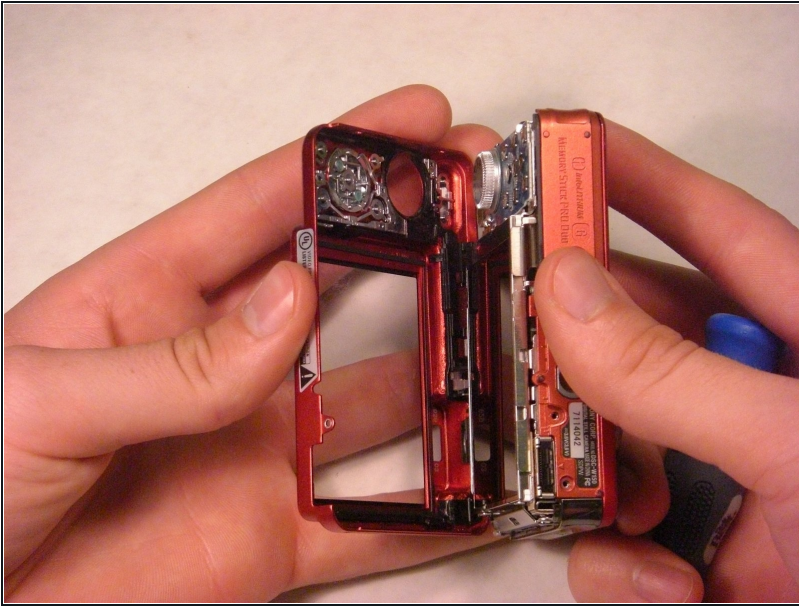
i The picture shows the lens facing away from you and the LCD screen facing you.

Step 5



- Gently detach the back cover by holding onto both sides of the camera and pulling them apart.

Step 6



- After detaching the back cover, carefully pull it off.

Step 7



- The back cover should now be separated from the camera.

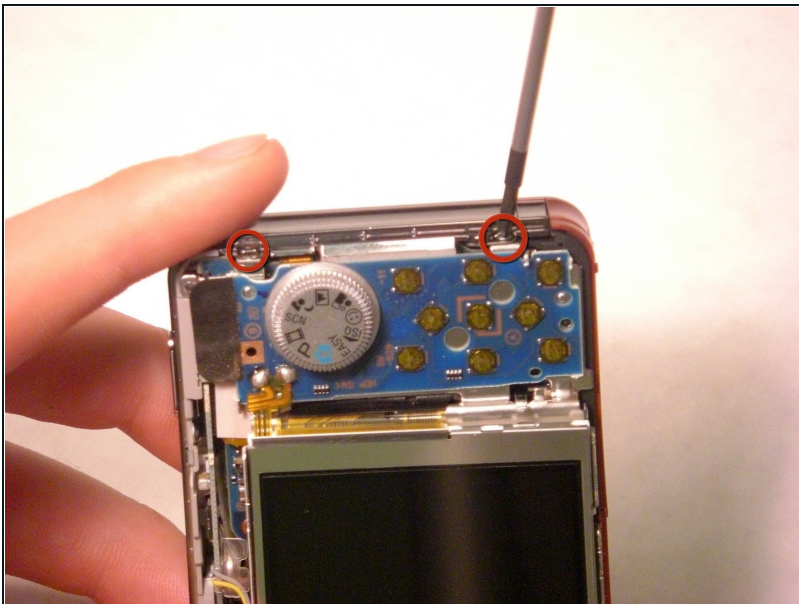
Step 8 — Front Casing



★ Keep track of the small screws that you remove.

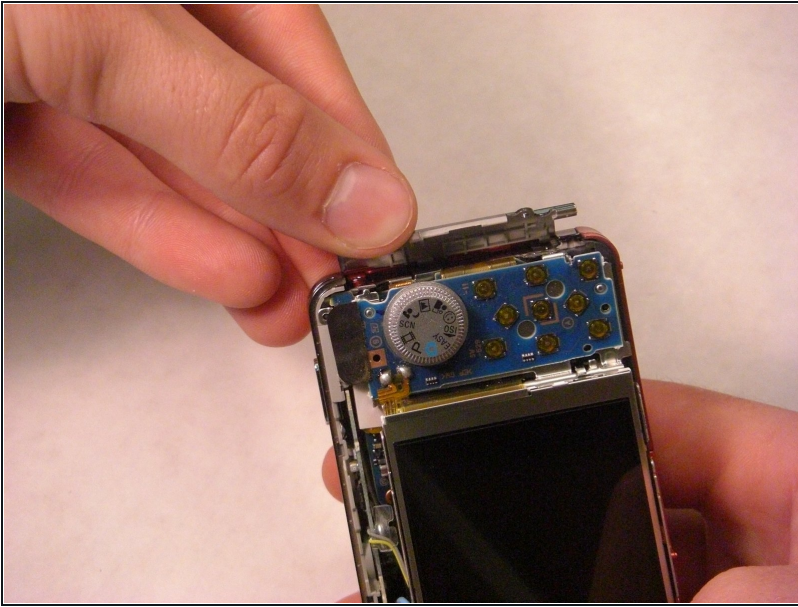
⚠ Opening, removing, and/or replacing the front casing may void your manufacturer's warranty.

Step 9



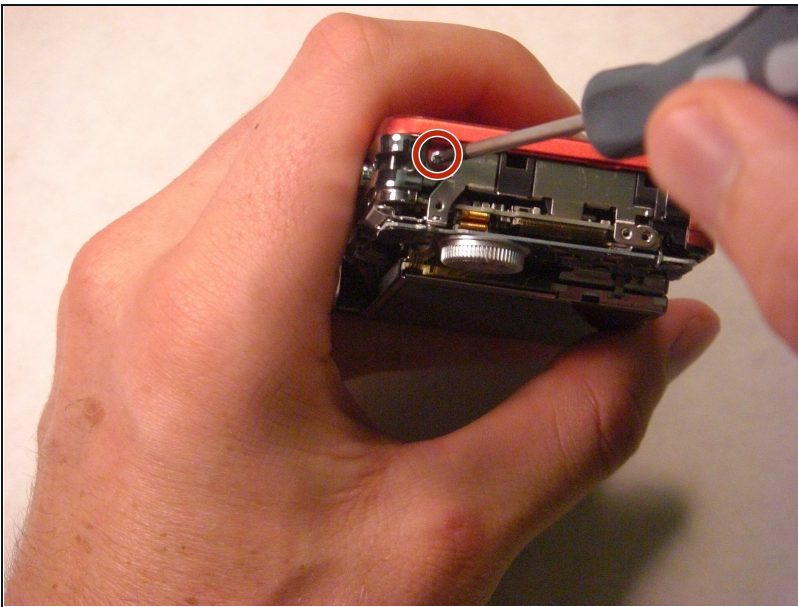
- Remove the two screws at the top of the camera casing.

Step 10



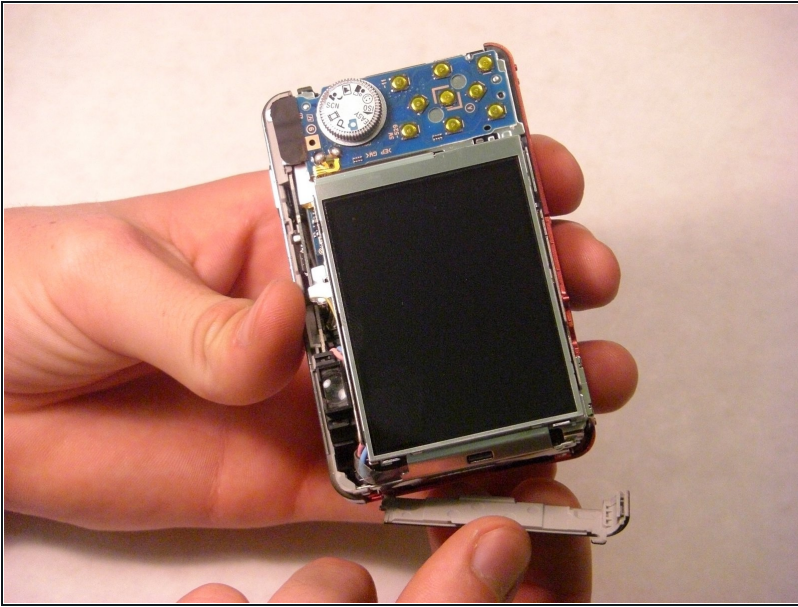
- After removing the screws, gently pop open the plastic piece, as shown by firmly pulling it with your fingers.

Step 11



- After popping open the plastic piece, there is a screw that needs to be removed.
- Remove the screw connecting the front casing to the electrical components.

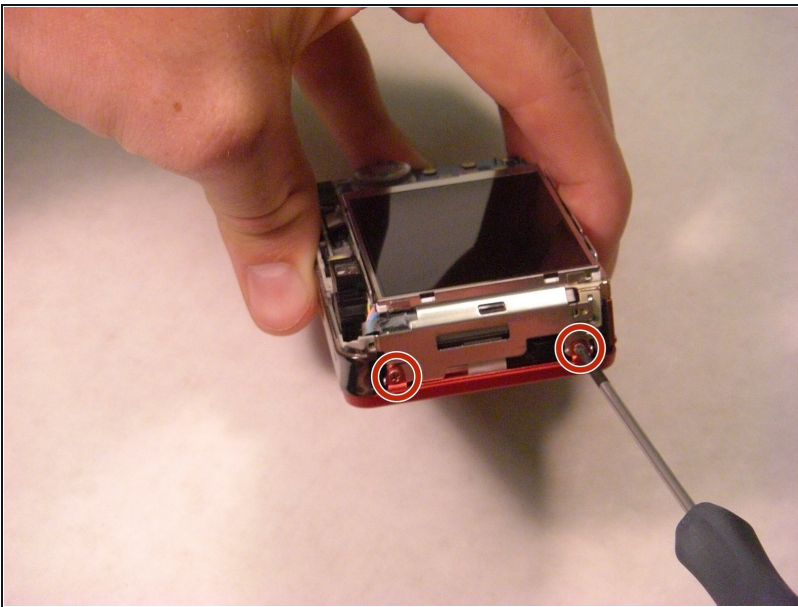
Step 12



- On the casing on the opposite side of the camera, gently loosen and remove the casing by firmly pulling with your fingers.

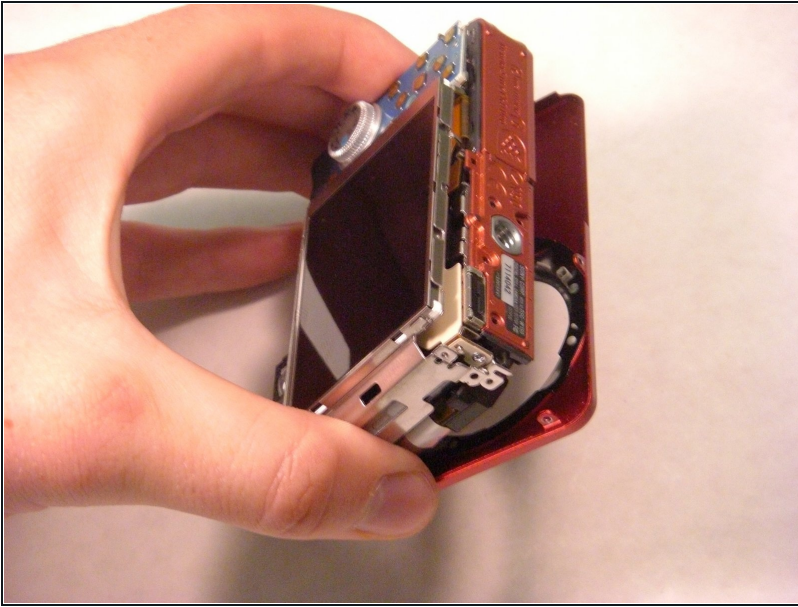
⚠ Be cautious not to break the fragile pieces or scratch the LCD screen.

Step 13



- Remove the two screws connecting the front casing to the electrical components using a screwdriver.

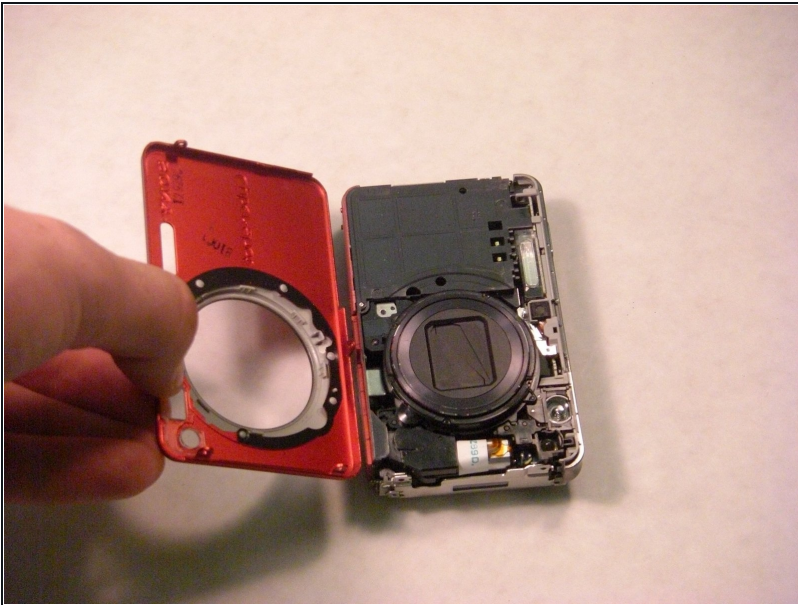
Step 14



- Gently loosen the front casing by gently using your fingers to pull it apart.

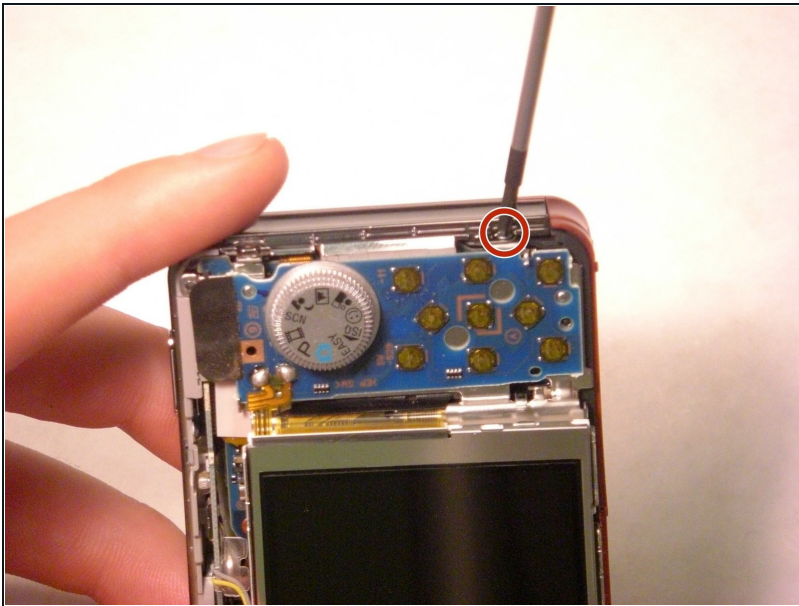
⚠ Be cautious not to scratch any of the exposed electrical components.

Step 15



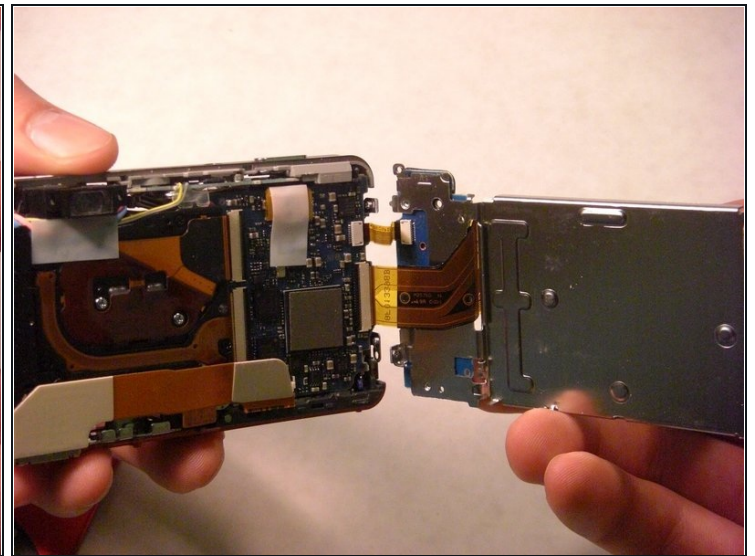
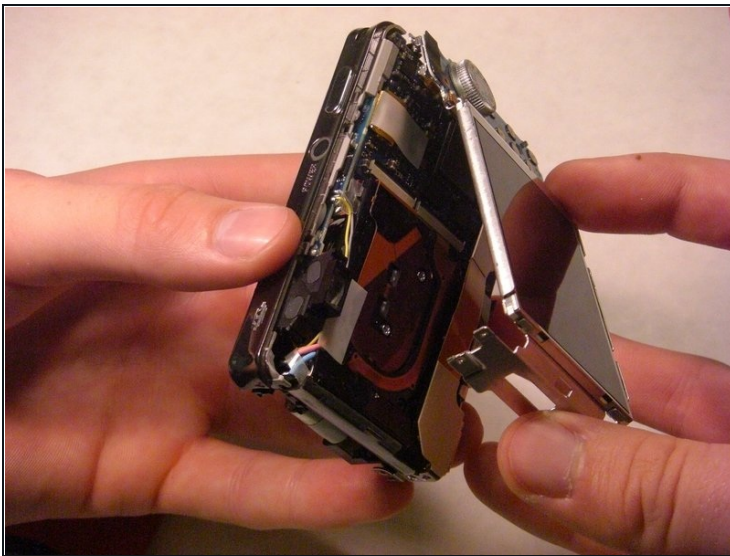
- Fully remove the front casing from the camera and set it aside.

Step 16 — LCD Screen



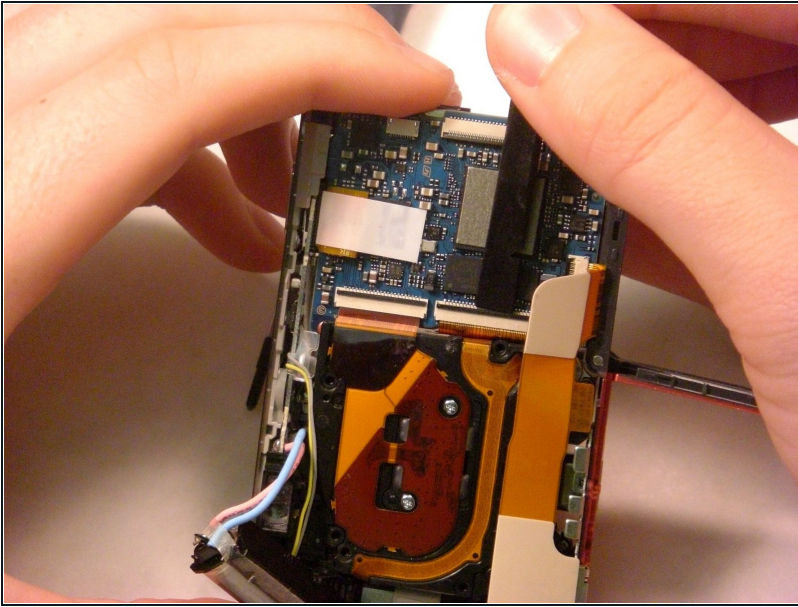
- ① The last screw is in the bottom left corner of the camera's right side.
- Using a screwdriver, remove the last screw holding the LCD/control panel to the rest of the camera on the right-hand side.
- ☑ It is crucial for reassembly to track which screws were removed from which holes.

Step 17



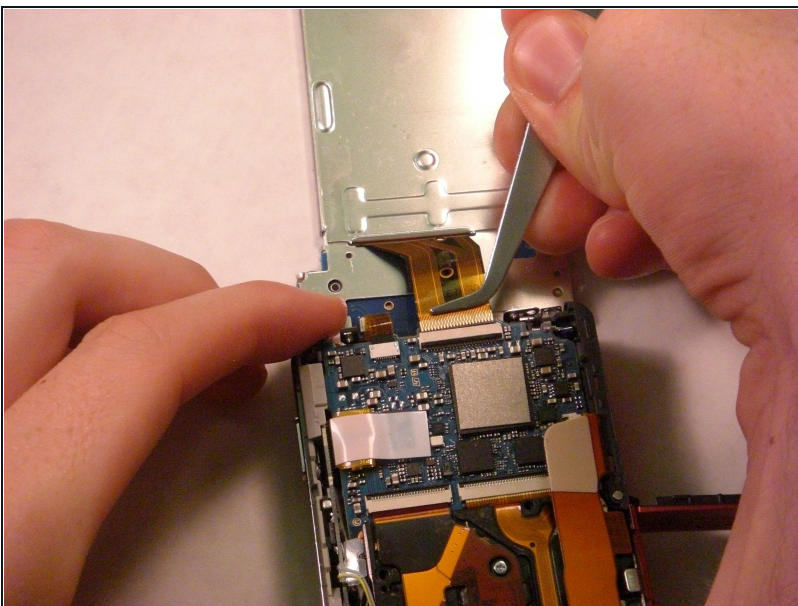
- ① At this point, all screws on the left and right sides of the camera should be removed.
- Paying careful attention to the right side's electrical wiring, gently pull the left side of the LCD plate away from the rest of the camera.
- ⚠ DO NOT detach the electrical wiring connecting the right side of the LCD and the camera.

Step 18



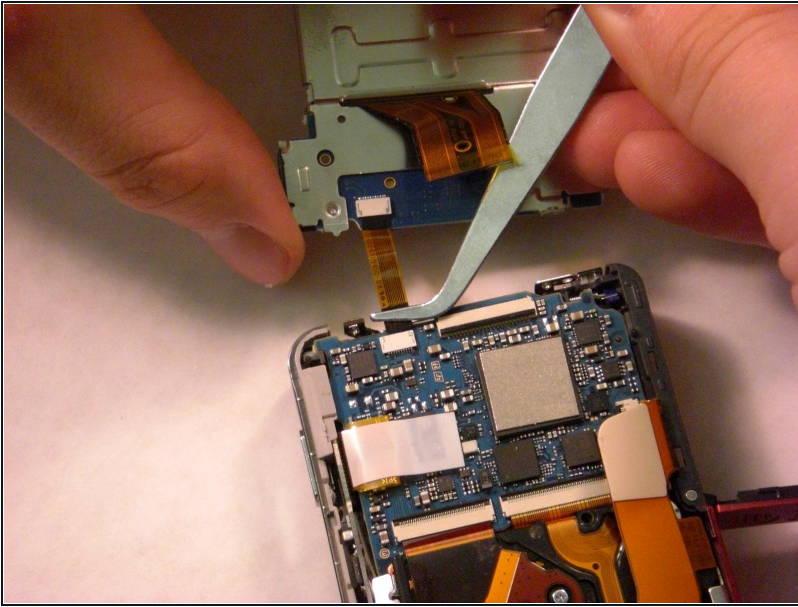
- ① This picture is used to identify the action required to release the electrical ribbons, but not the proper location for this step.
- ① This step applies to the larger electrical ribbon connecting the LCD screen and circuit board.
- Using a spudger, wedge the flat-tipped end between the black bar and the circuit board.
- Carefully lift the black bar into the vertical position.

Step 19



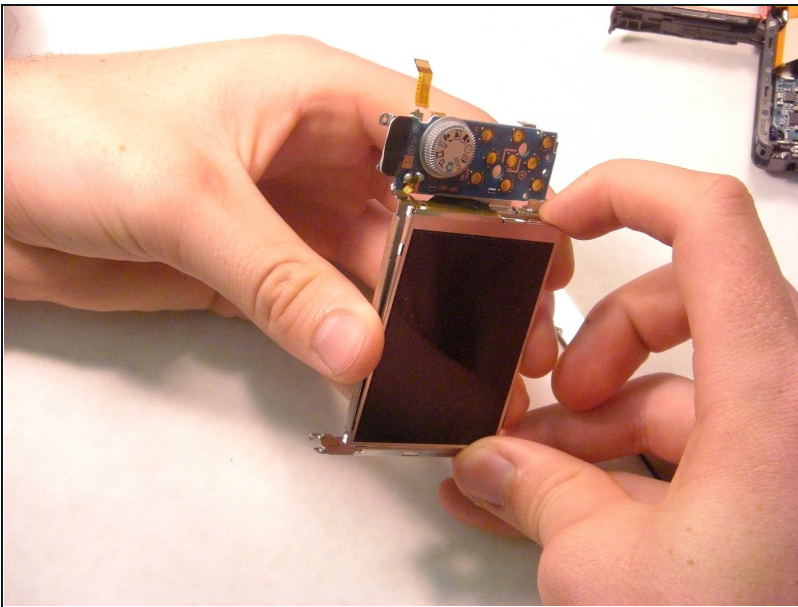
- ① After raising the black bar, the electrical ribbon should be free from its port.
- Use [tweezers](#) to carefully pull the larger electrical ribbon from its circuit board port.

Step 20



- ① The smaller electrical ribbon, to the left of the larger ribbon, does not have a black bar securing it in place.
- Use tweezers to pull the smaller electrical ribbon carefully from its circuit board port.

Step 21



- Desolder the small electrical ribbon that connects the control panel to the LCD screen.
- Now the LCD/control panel is completely removed from the part and ready to be replaced.

To reassemble your device, follow these instructions in reverse order.