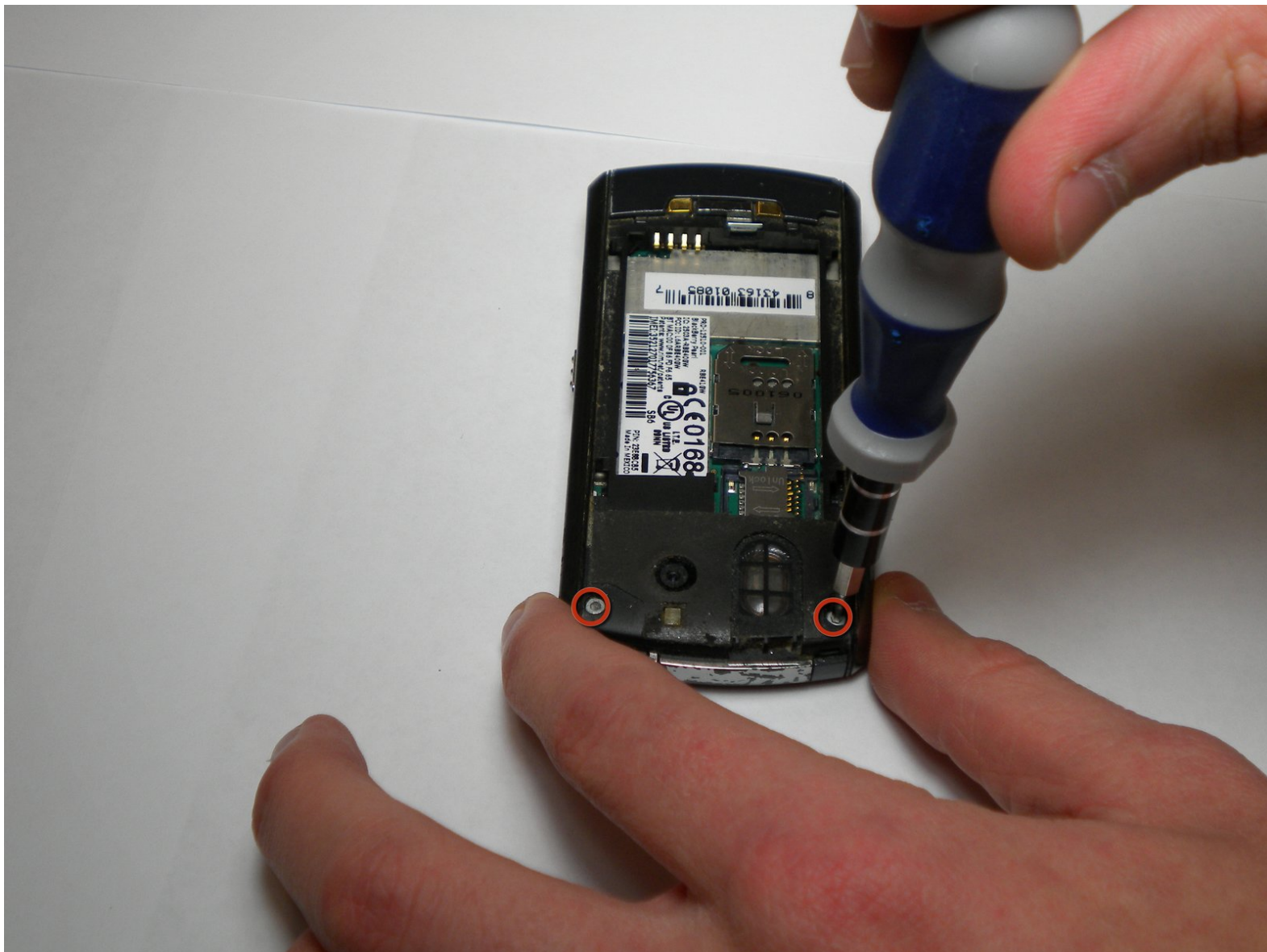




BlackBerry Pearl 8100 Keyboard Replacement

Written By: Robert Cronin



INTRODUCTION

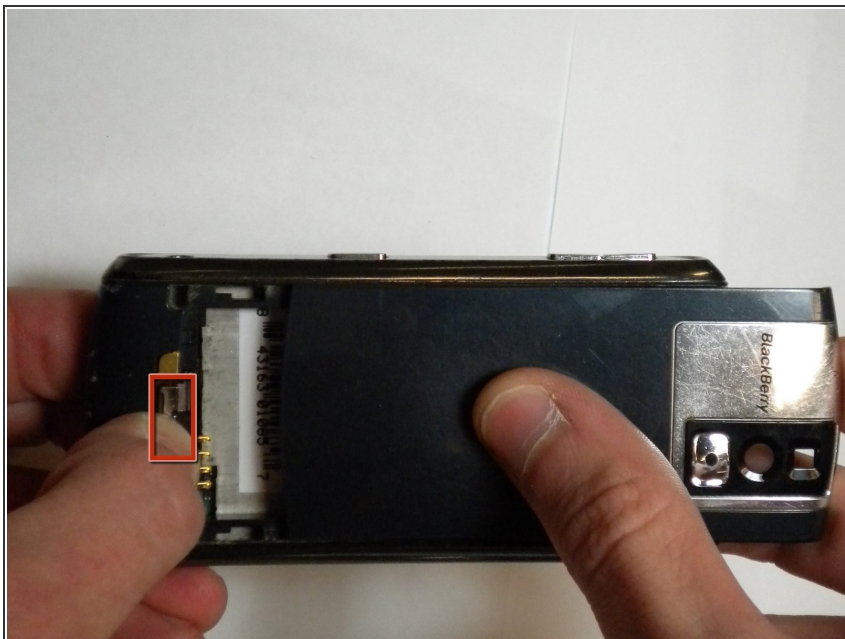
Follow this guide to install the keyboard in the BlackBerry Pearl 8100.



TOOLS:

- [1.5mm Hex Screwdriver](#) (1)
 - [Spudger](#) (1)
-

Step 1 — Battery



- ❗ Before working on the phone, be sure that the device is turned off.
- Begin by removing the back panel; this can be done by pressing the silver button on the backside of the BlackBerry 8100, while simultaneously sliding the back panel off.

Step 2



- Remove the battery located directly below back panel.

Step 3 — Keyboard



- Using a 1.5 mm Hex screwdriver, remove the two screws that hold the two panels together.

Step 4



- Using the spudger, pry off the small portion of the casing located at the bottom of the phone.

Step 5



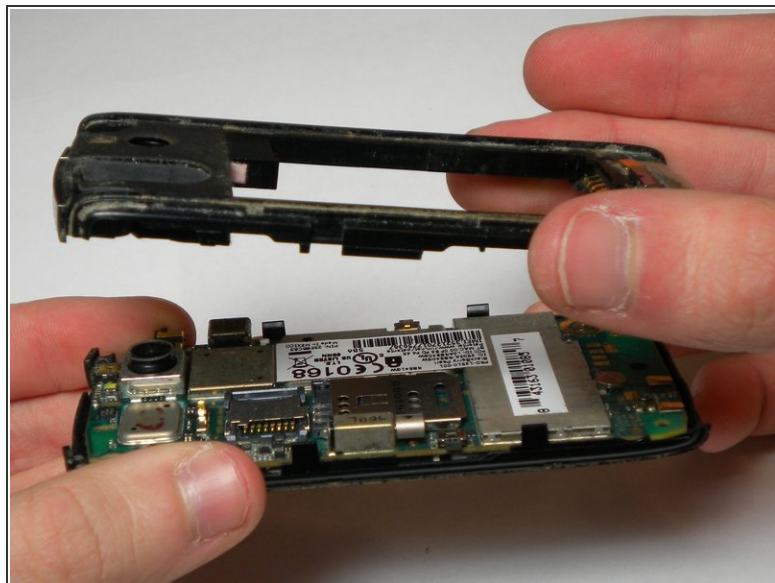
- Using the spudger, pry off the side casings one at a time by wedging it between the inner casing and the sides.

Step 6



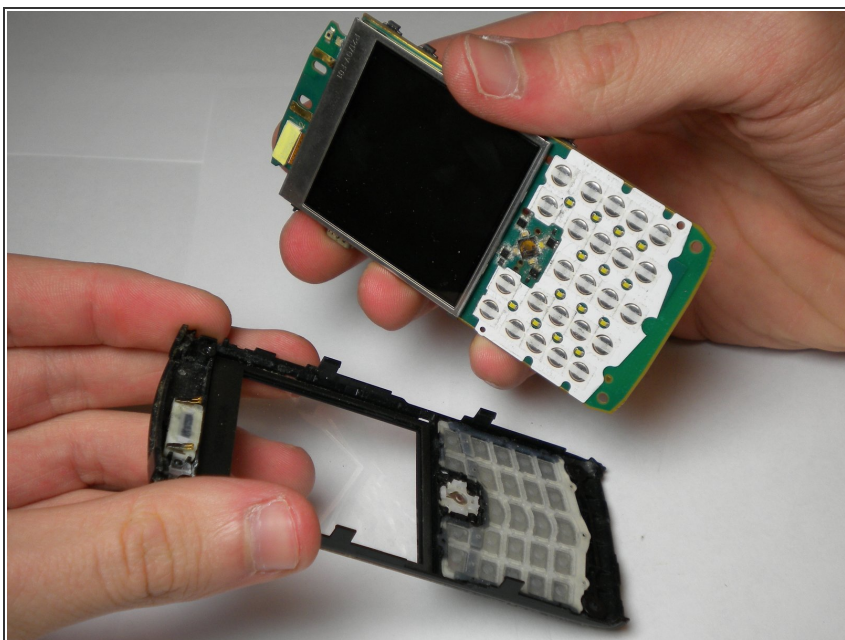
- Using a 1.5mm Hex screwdriver, unscrew the two screws, located on the front of the phone, that connect the back and front panels.

Step 7



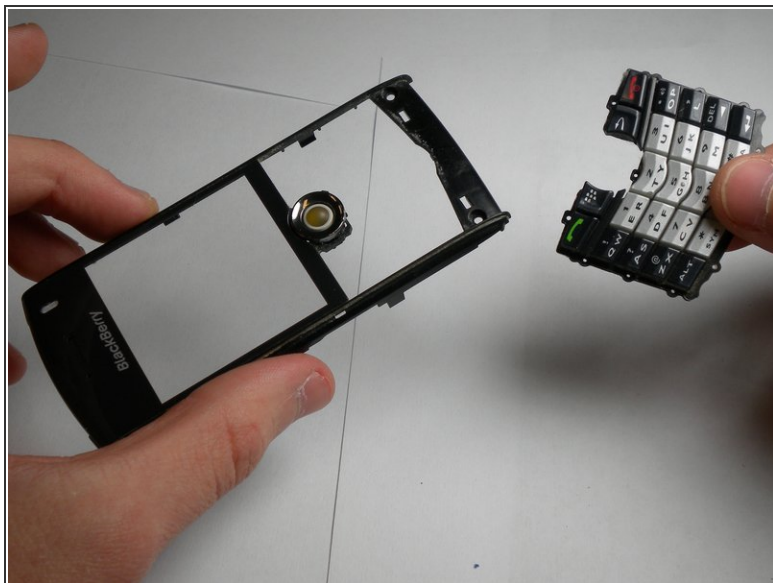
- Using the spudger, pry off the back body panel by wedging the spudger in between the front and back panels on the side face. Remove the back body panel.

Step 8



- Separate the logic board from the front panel.

Step 9



- Gently remove the keyboard from front casing. It should snap out of place.

To reassemble your device, follow these instructions in reverse order.