



Dell Inspiron m5030 Hard Drive Replacement

This guide will inform you how to remove and...

Written By: Michael McNutt



INTRODUCTION

This guide will inform you how to remove and replace the hard drive in your Dell Inspiron m5030.



TOOLS:

- [Phillips #0 Screwdriver](#) (1)
 - [iFixit Opening Tool](#) (1)
-

Step 1 — Keyboard



- Remove all fourteen Phillips #0 7/16" screws from the bottom of the laptop.
- Remove the two Phillips #0 5/16" screws from the bottom of the laptop.

Step 2



- Turn the laptop over and open the lid.
- Locate the three tabs above the first row of keys on the top of the keyboard, found above the F1, F6, and PrntScr keys.
- With one of your hands, push the leftmost tab down with the plastic opening tool (above the F1 key). With your other hand, lift the left side of the keyboard.
- Push the middle tab down with the plastic opening tool and continue lifting from the left side of the keyboard to the right side (above the F6 key).
- Push the rightmost tab down with the plastic opening tool and continue lifting from the left side of the keyboard to the right side (above the PrntScr key). The keyboard should be loosened from the laptop after these steps.

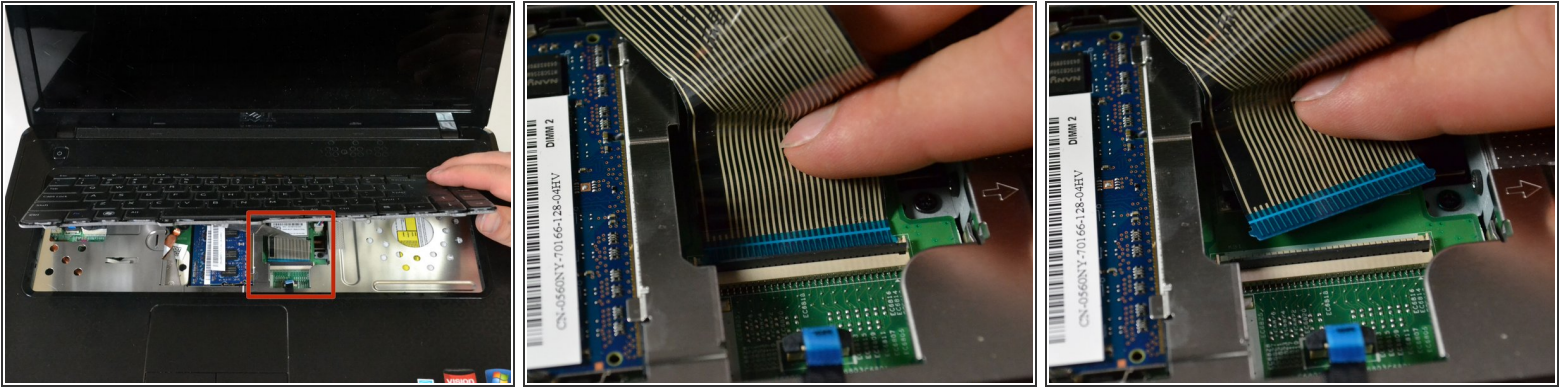
Step 3



- After the top edge of the keyboard is loose, pull up on the keyboard gently.

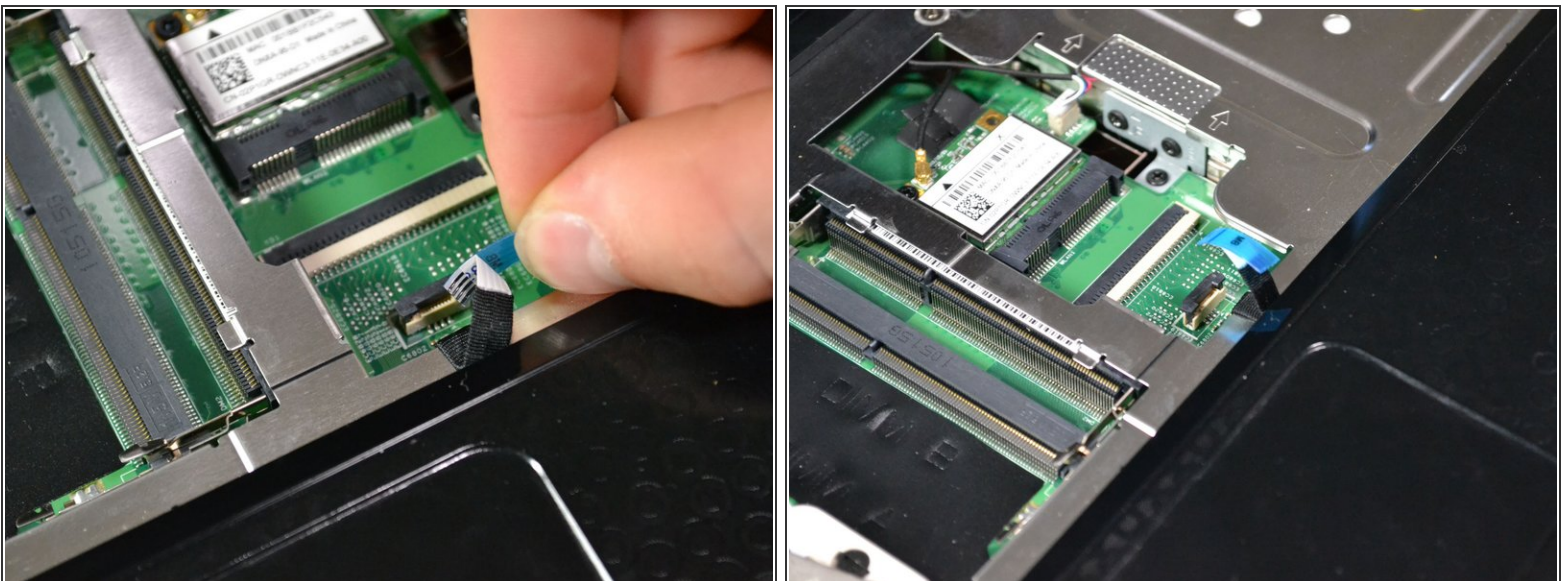
⚠ Do not pull the keyboard up forcefully as the keyboard is still attached to the laptop by a ribbon.

Step 4



- Pull up the bottom side of the keyboard and locate the ribbon connecting the keyboard to the motherboard.
- Locate the blue end of the ribbon which is connected to the motherboard.
- Lift up the black flap on the connector and gently pull the ribbon away from the connector which is parallel to the motherboard.
- Lift the keyboard up and off of the motherboard. Detach the blue end of the ribbon from the connector.

Step 5 — Surface Around the Keyboard



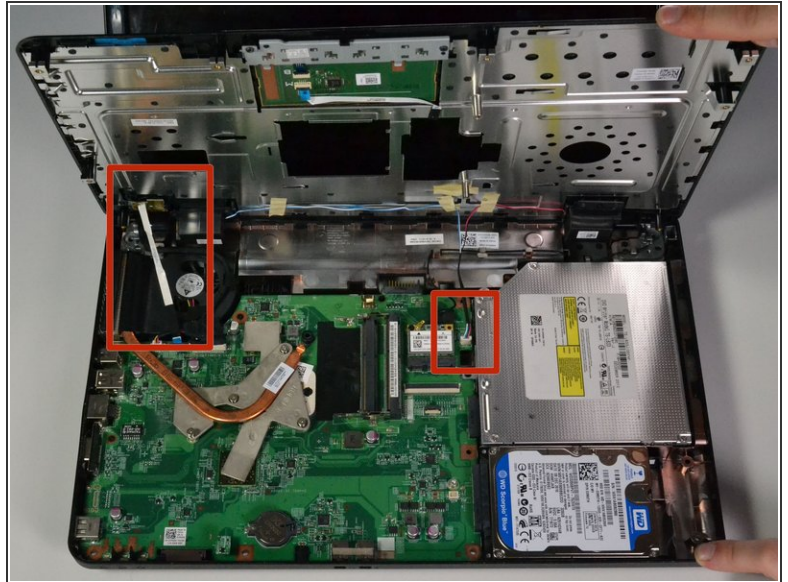
- Disconnect the blue tab located just above the touch pad of the laptop.

Step 6



- Lift the black locking tab a small way up, away from the Green PCB, until a click is heard. Before pullinh on blue tab.

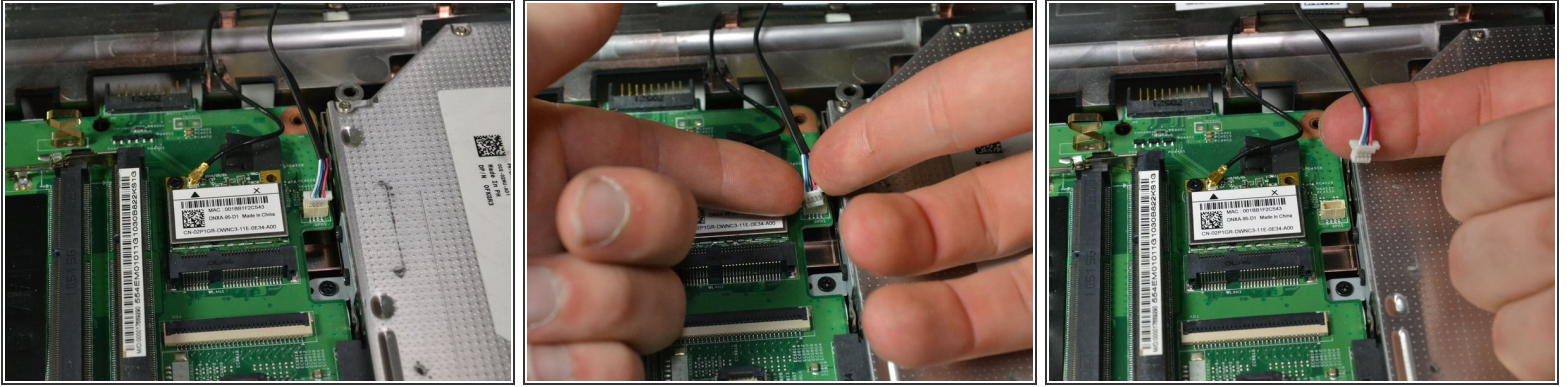
Step 7



- Use a plastic opening tool to pry up the plastic covering of the laptop by wedging it underneath one side of the covering and lift up.

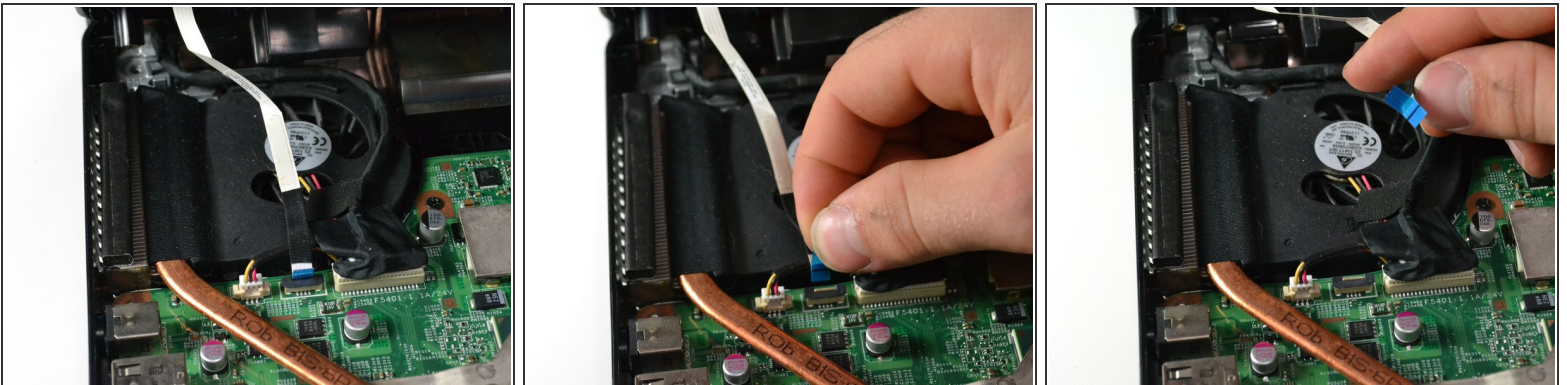
⚠ Do not lift off the cover all the way as it is still connected by two wires on the side nearest to the screen.

Step 8



- Disconnect the white block of wires which is the right-most wire connecting the covering to the laptop.

Step 9



- Disconnect the wire with the blue tab which is the left-most wire connecting the covering to the laptop.
- You can now remove the plastic covering.

Step 10 — Hard Drive



- Locate the hard drive in the bottom right-hand corner of the laptop.

Step 11



- Slide the hard drive toward the right side of the laptop to remove it.
- That's it!

To reassemble your device, follow these instructions in reverse order.