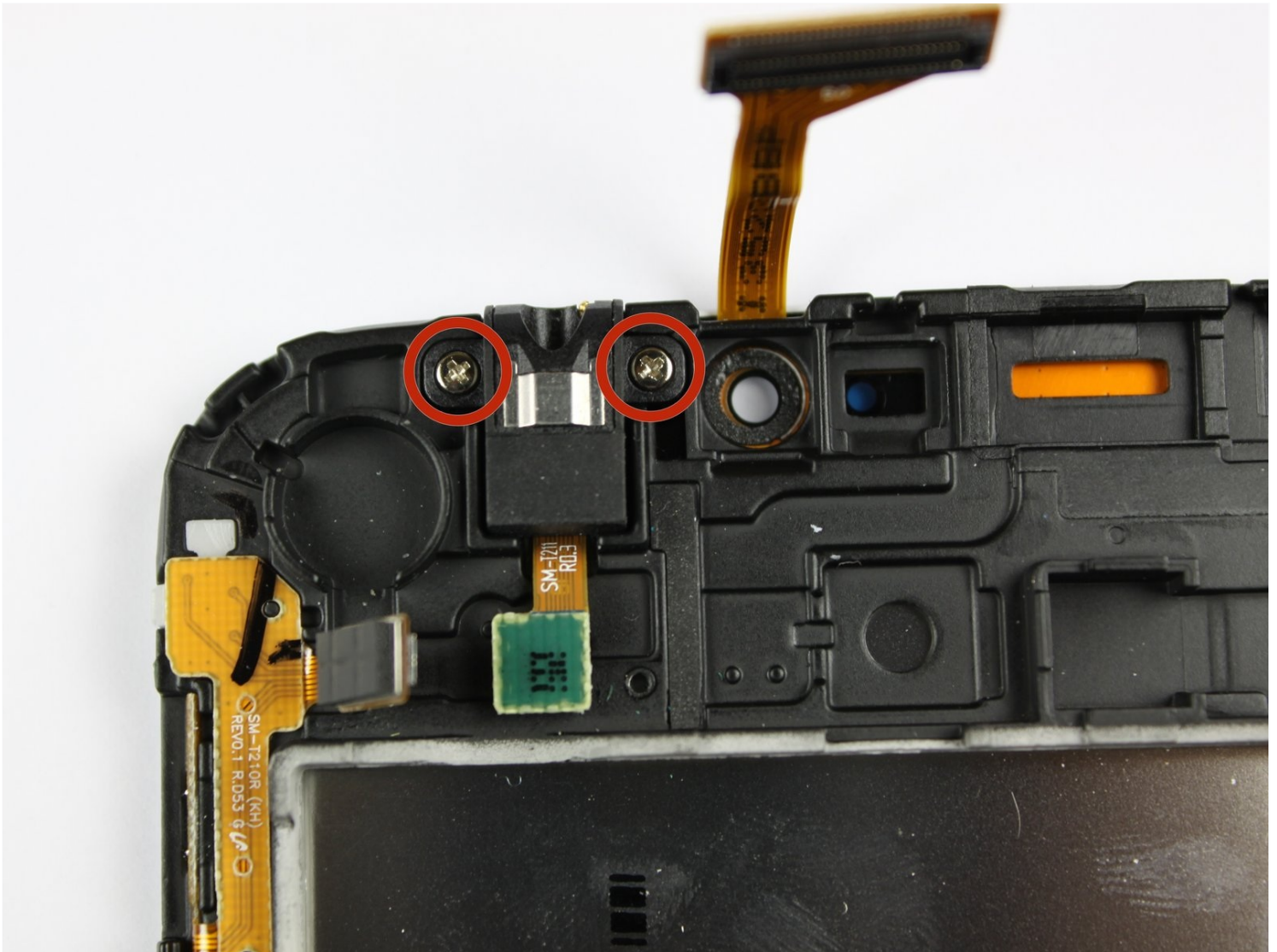




Samsung Galaxy Tab 3 7.0 Headphone Jack Replacement

Written By: Brandon Dimaya



TOOLS:

Flathead 3/32" or 2.5 mm Screwdriver (1)
Spudger (1)

PARTS:

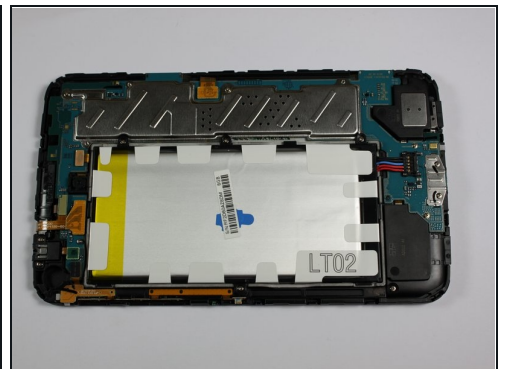
Samsung Galaxy Tab 3 7" Wi-Fi
Headphone Jack (1)

Step 1 — Battery



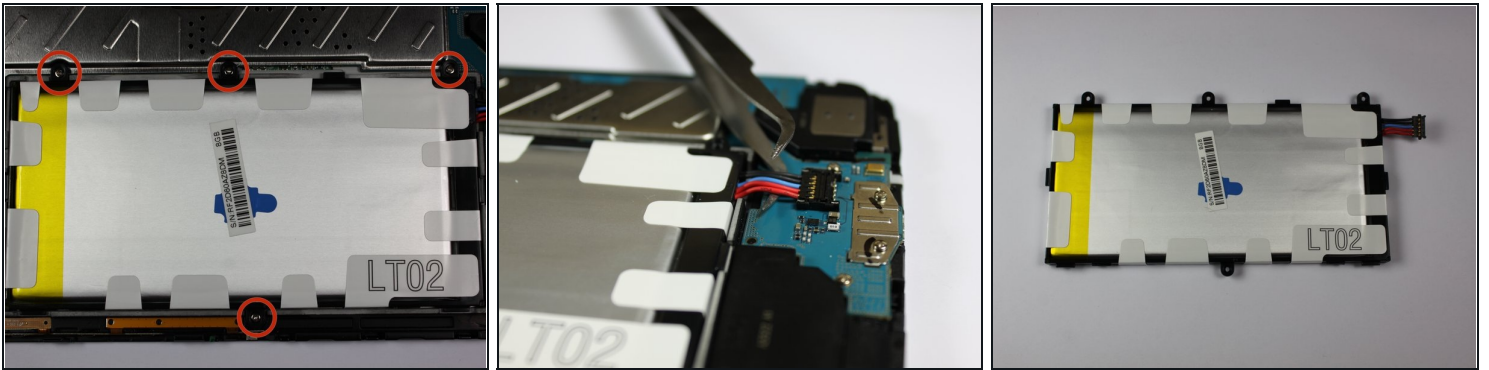
- With a plastic opening tool, gently insert the prying end in between the glass digitizer and the silver frame from the front of the device.

Step 2



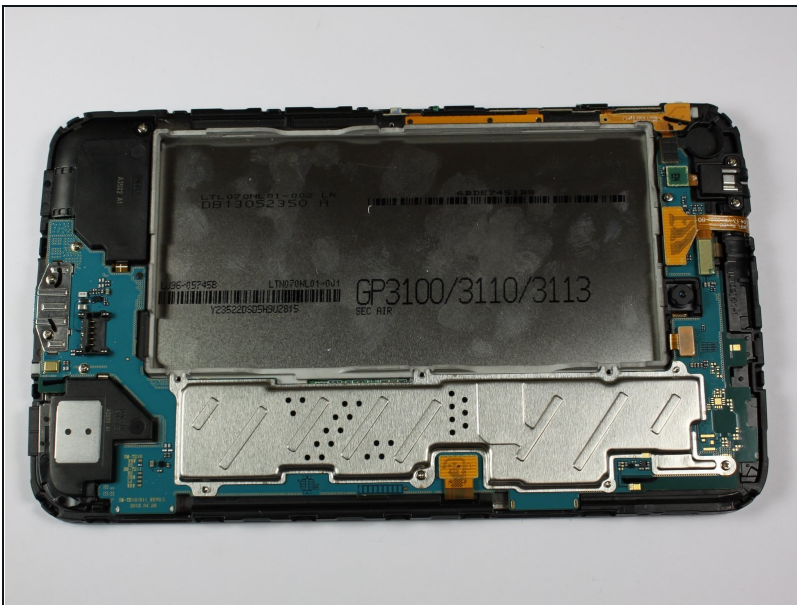
- Working slowly and carefully, move around the entirety of the face of the device. Small plastic clips should release, if not, apply gentle outwards pressure until you hear the clips popping off.

Step 3



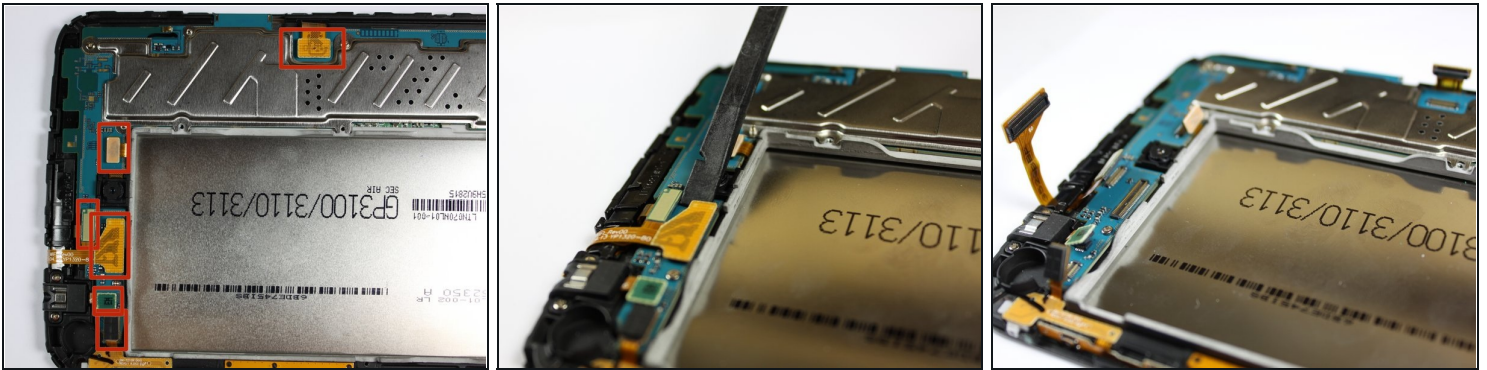
- To begin actual removal of the battery itself, remove the four designated screws with your screwdriver.
- Once the screws are removed, use either the tip of your screwdriver or a pair of [tweezers](#) to pull up the battery connector. Pull directly up and the connector should pop out.
- Once the battery is removed, it should look as it does in the third picture.

Step 4



- To finish battery replacement, place your new battery where the old battery was in your device, as shown in the picture.

Step 5 — Motherboard



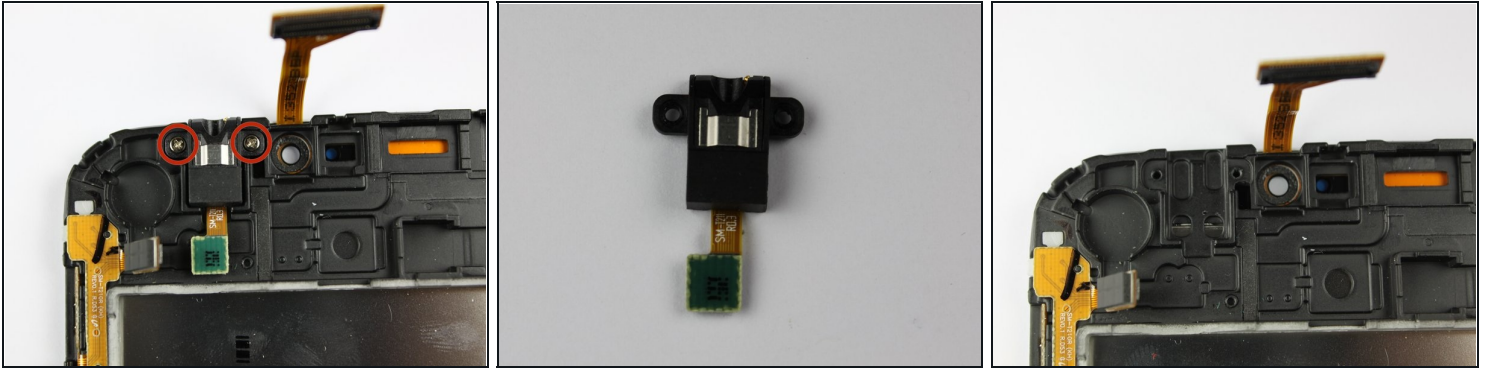
- Begin replacement of the motherboard by releasing all connections holding down the motherboard, shown in the first picture.
- To do this, use your spudger, [tweezers](#), or a plastic opening tool and gently lift the connections up from their ports.
- Once you separate all connections, the back of your device should look as it does in the third picture.

Step 6



- Once all connections have been released, begin removing the screws shown in the first two pictures.
- Once all screws have been removed, the motherboard can now be removed and replaced with a new one.

Step 7 — Headphone Jack



- To remove the headphone jack, begin by removing the two designated screws shown in the first picture.
- Once the screws have been removed, the headphone jack can simply be lifted from the device.
- After this step is complete, a replacement headphone jack can be placed into the device where the old headphone jack was, as shown in the third picture.

To reassemble your device, follow these instructions in reverse order.