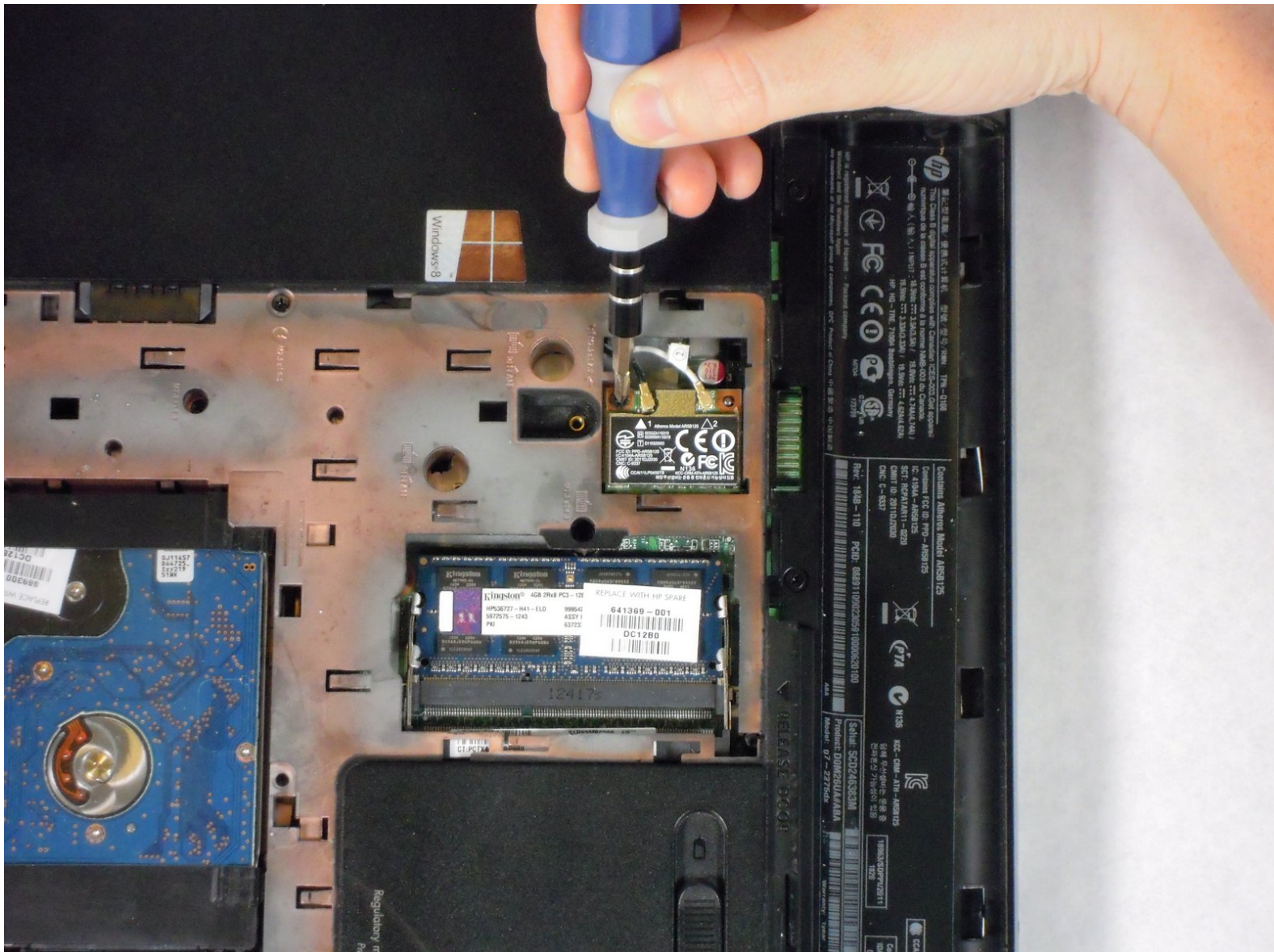




HP Pavilion g7-2275dx Wireless Card Replacement

Replacing the wireless card in your HP g7-2275 dx laptop.

Written By: John Sutton



INTRODUCTION

Is your wifi running incredibly slow or not connecting at all? If your laptop is the only device having problems, then replacing your wireless card may help.

TOOLS:

- [Phillips #1 Screwdriver](#) (1)
 - [iFixit Opening Tools](#) (1)
-

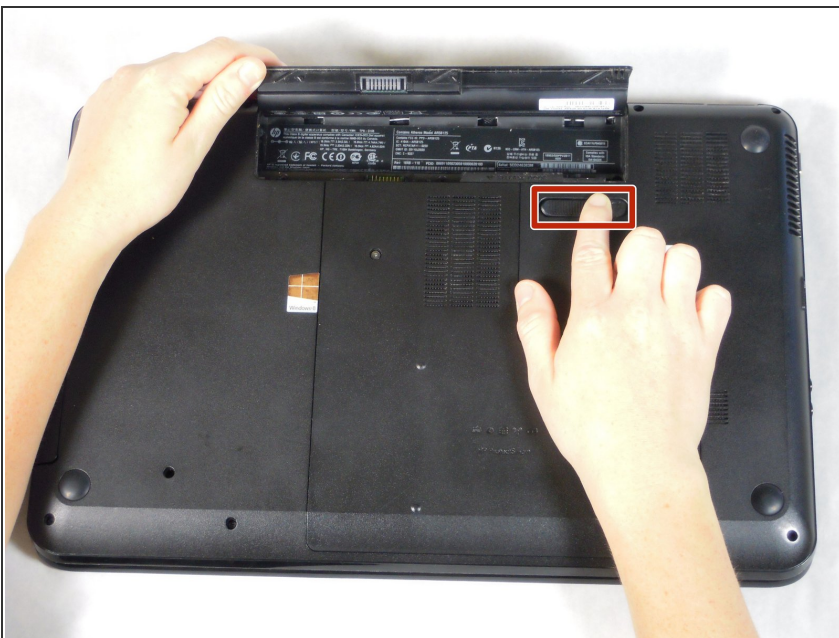
Step 1 — Battery



⚠ Working on your device while it is turned on may result in electric shock. Make sure to shut down and unplug your device before you begin.

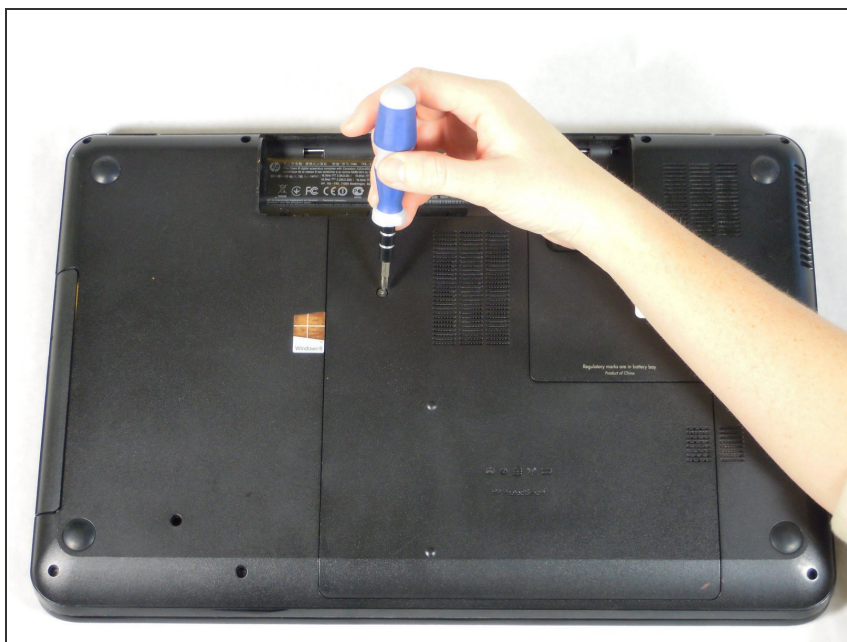
- Flip your device over so the bottom panel is facing up.

Step 2



- The battery is held in by a latch in the front and tabs in the back.
- Slide the lock switch left, towards the center of the computer.
- Lift up the battery, rotating it up and away from you, then pull it out.
- ☑ To put the battery back in, line it up with the battery bay and the holes for the tabs. Then let the battery rotate towards you and press down until the latch engages and you hear a click.

Step 3 — Disassembling HP Pavilion g7-2275dx Back Panel



- Unscrew one Phillips #1 screw from the back panel.
- ⓘ The screw is on a spring and attached to the panel. It will pop up, but will not separate from the back panel.

Step 4



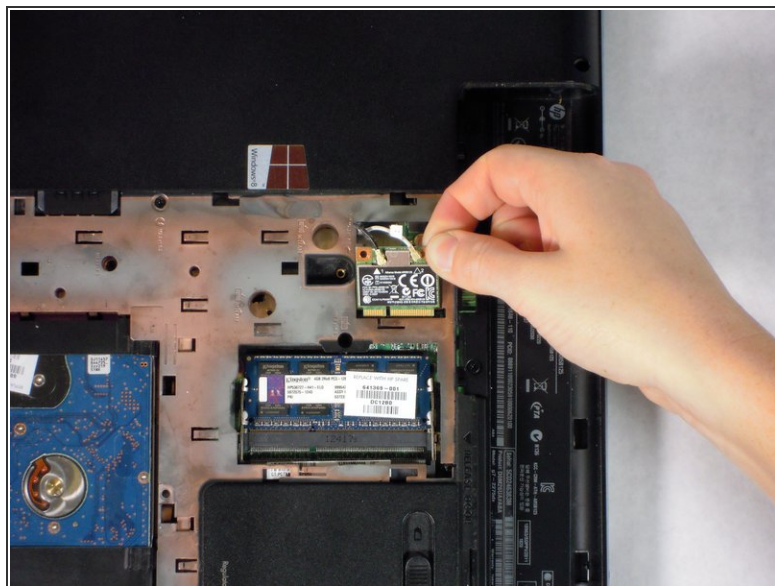
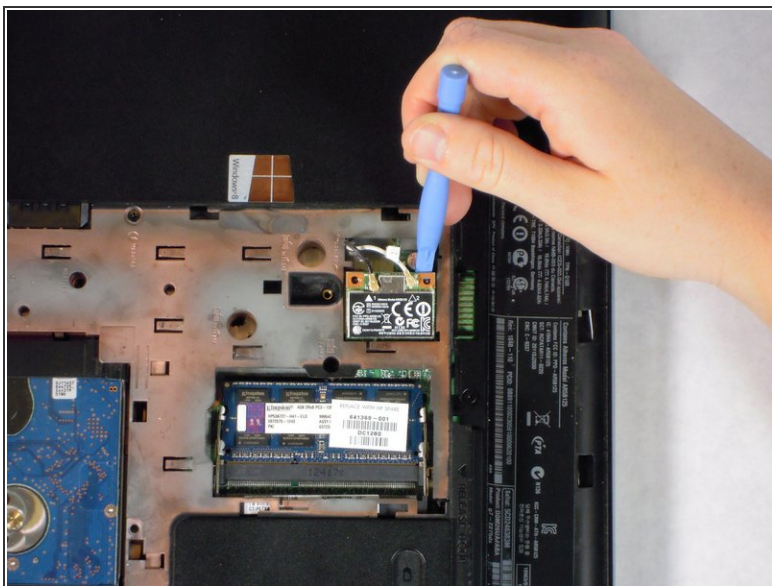
- Slide the back panel down and pull it up.

Step 5 — Wireless Card



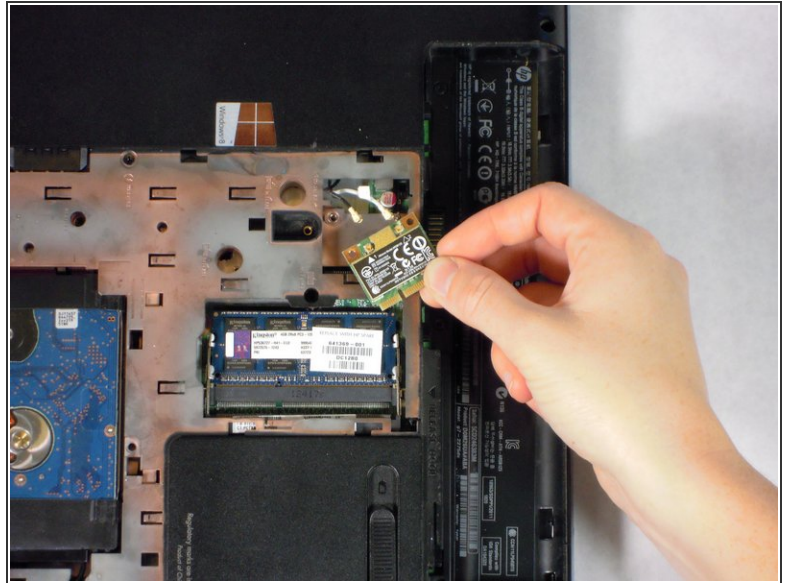
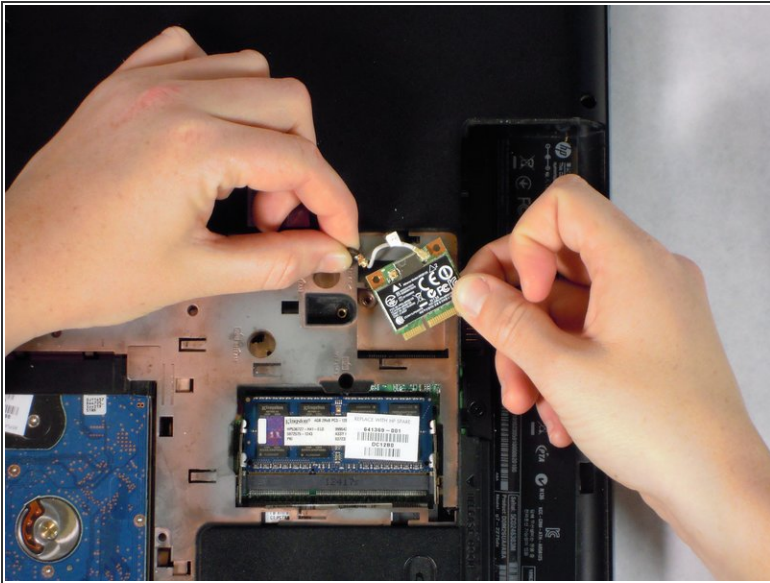
- Use a Phillips #1 screw driver to unscrew the black 4 mm Phillips #1 screw on the wireless card.

Step 6



- Use a plastic opening tool to lift the wireless card out of its slot.

Step 7



- Pull the black and white wires up and off of the wireless card.
- Remove the wireless card.

To reassemble your device, follow these instructions in reverse order.