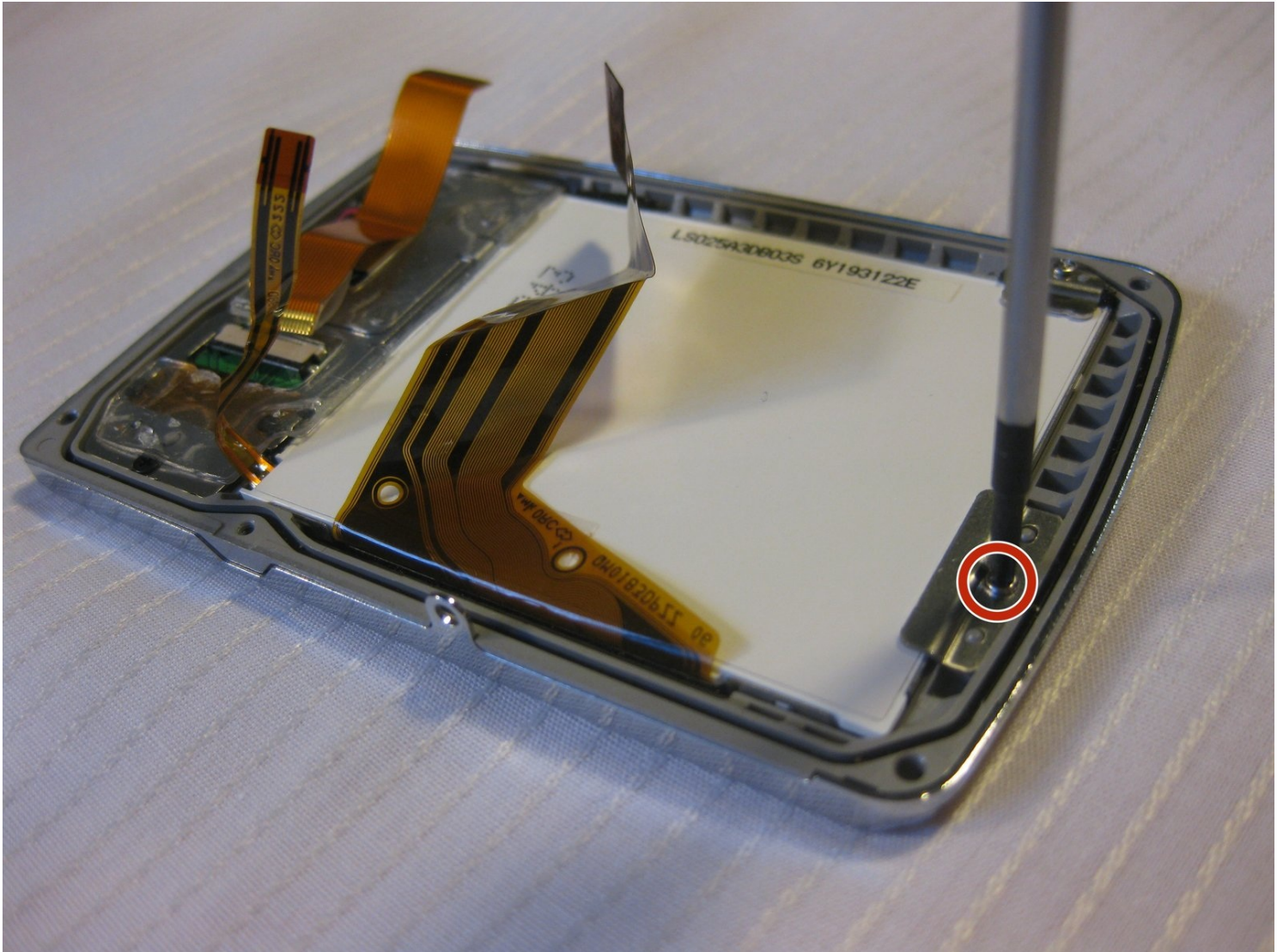




Olympus Stylus 725 SW LCD Screen Replacement

This guide provides instructions for replacing...

Written By: Bobby Hodges



INTRODUCTION

This guide provides instructions for replacing a broken LCD screen on the Olympus Stylus 725.

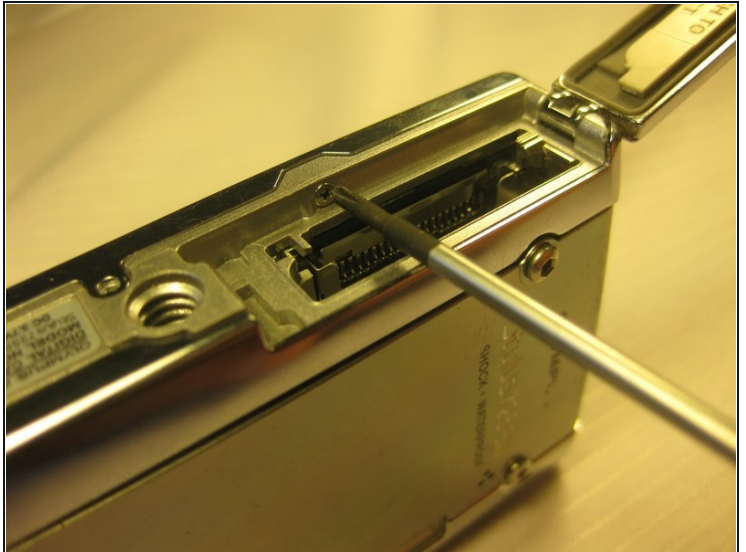
TOOLS:


Tweezers (1)

Optional, but helpful

Phillips #00 Screwdriver (1)

Step 1 — Disassembling Olympus Stylus 725 SW Battery



 The battery is located on the bottom of the camera.

- Remove the battery by placing your thumb on the bottom flap and sliding the release button away from the side the lens is on. (The screwdriver is simply used as a reference point, no screws need to be removed)
- If the battery is dead, charge it for 60-90 minutes.

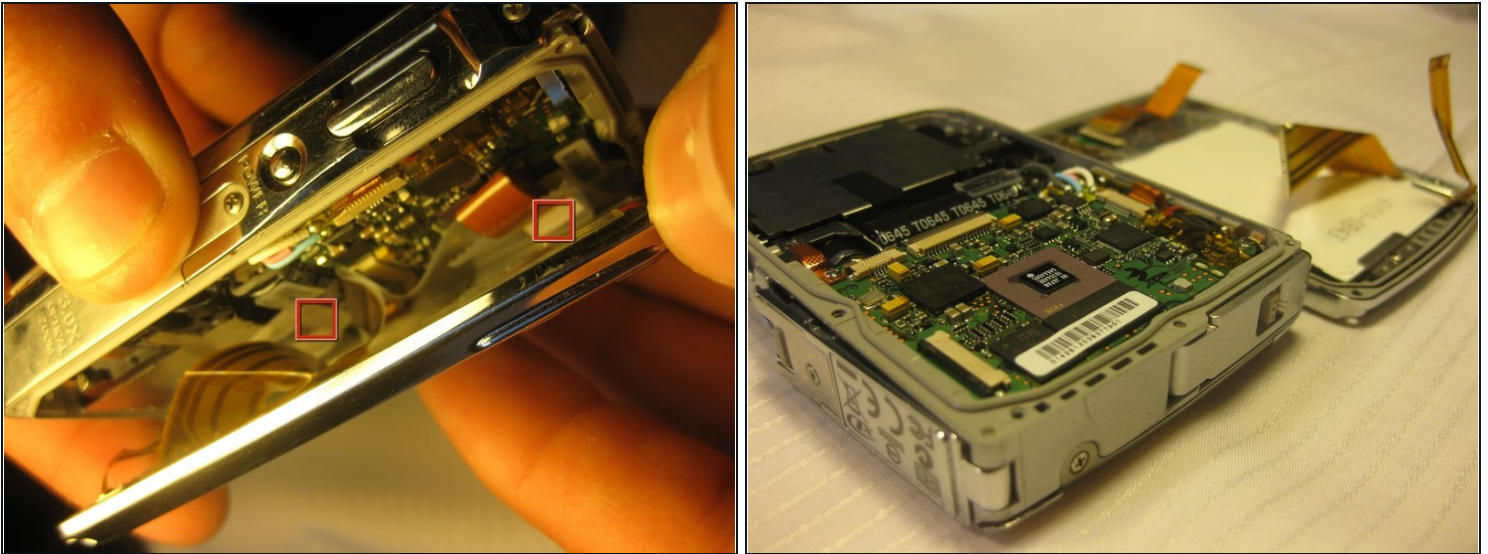
 When installing a charged battery, align the battery appropriately. The positive signs and negative should line up.

Step 2 — Disassembling Olympus Stylus 725 SW Back Panel



- Remove the four 3 mm long cover screws at the corners of the camera using a Phillips #00 screwdriver.
- Remove the 2 mm long screws securing the sides of the camera which holds the back panel using a Phillips #00 screwdriver.

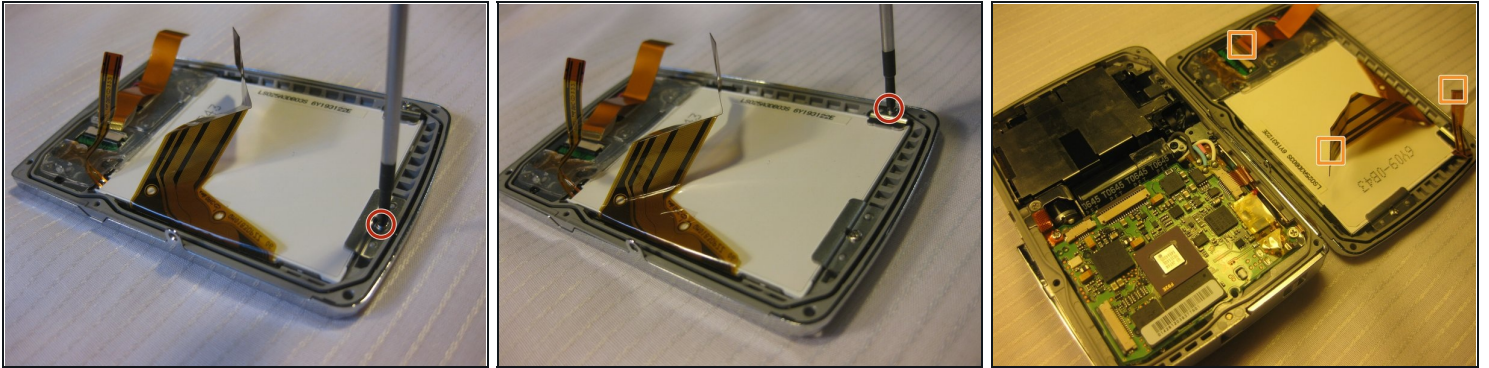
Step 3



⚠ Be careful when removing the back cover; you will need to detach the connecting ribbons. Use [tweezers](#) if necessary.

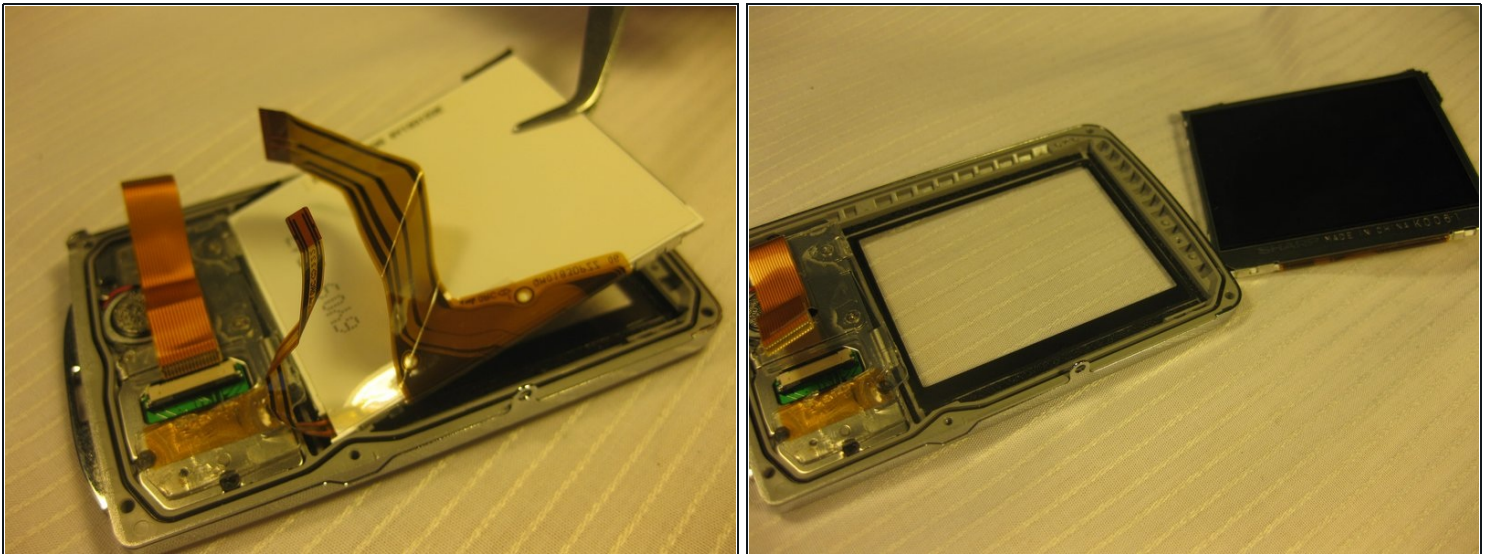
- Detach the ribbons using your thumb, sliding them out of their slots.
- Set the back panel face up to keep the ribbons from touching anything.

Step 4 — LCD Screen



- Remove the screws in the back panel using a Phillips #00 screwdriver.
- Detach the ribbon cables that connect the LCD to the back panel of the camera.

Step 5



- Use [tweezers](#) to remove the loosened LCD screen.

⚠ Be careful to not scratch the new LCD screen when replacing it.

- Carefully place the new screen in place of the old, making sure the label faces up.

To reassemble your device, follow these instructions in reverse order.