



# Disassembling Olympus Stylus 725 SW Battery

Use this guide to remove the battery in order...

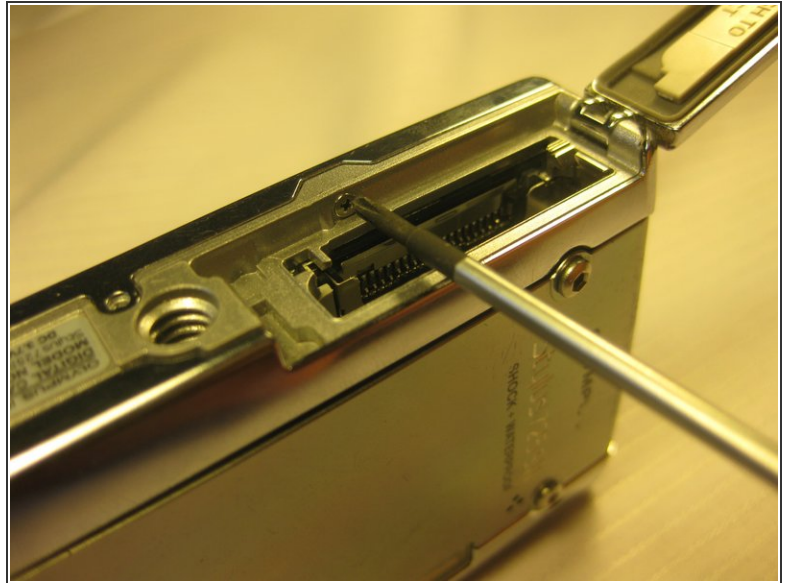
Written By: Bobby Hodges



## INTRODUCTION

Use this guide to remove the battery in order to charge it, or do extensive work on the camera.

## Step 1 — Disassembling Olympus Stylus 725 SW Battery



**i** The battery is located on the bottom of the camera.

- Remove the battery by placing your thumb on the bottom flap and sliding the release button away from the side the lens is on. (The screwdriver is simply used as a reference point, no screws need to be removed)
- If the battery is dead, charge it for 60-90 minutes.

**⚠** When installing a charged battery, align the battery appropriately. The positive signs and negative should line up.

Follow these instructions in reverse order to reassemble your device.