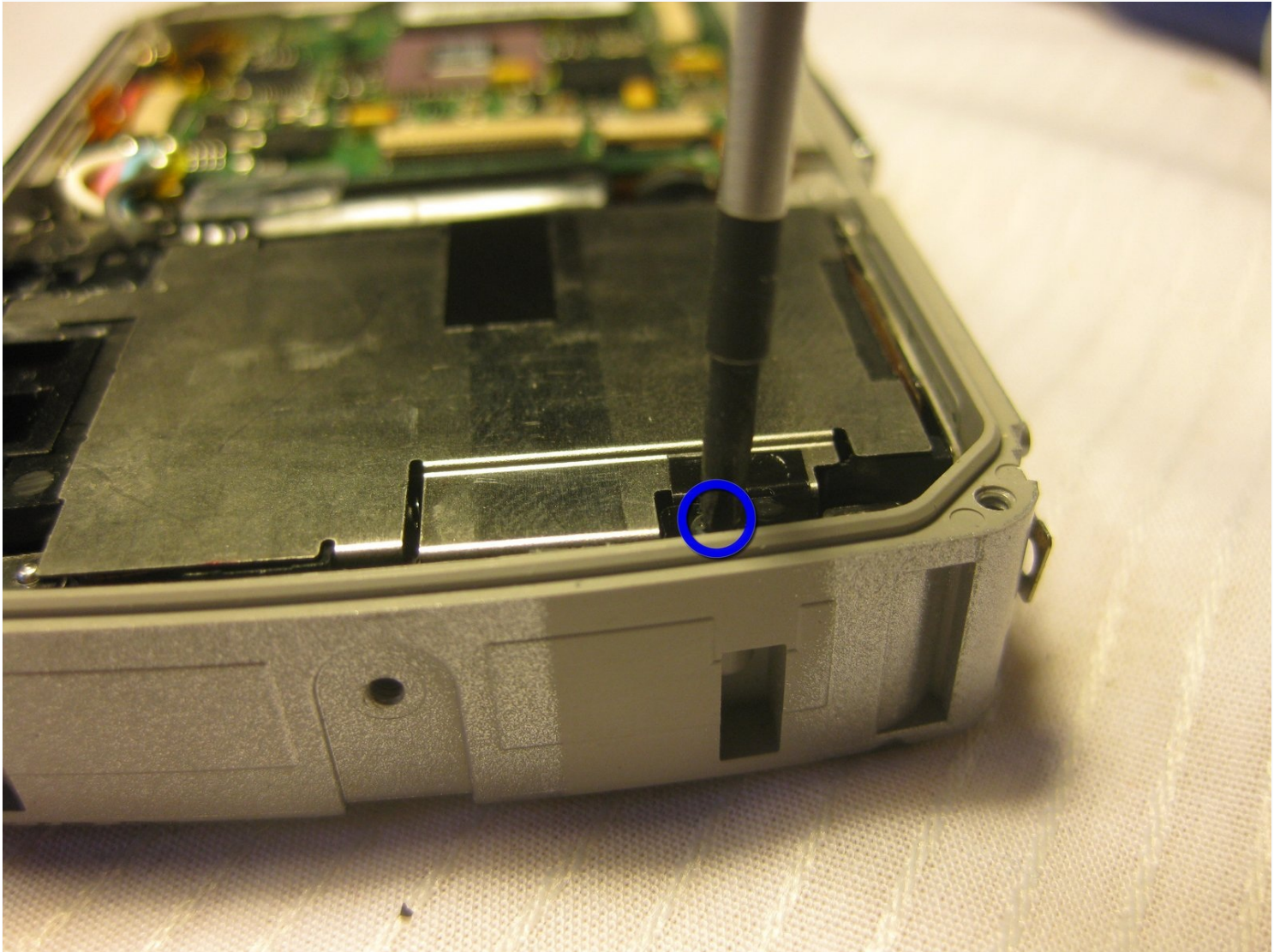




Olympus Stylus 725 SW Lens Replacement

Use this guide to replace a broken lens inside...

Written By: Bobby Hodges



INTRODUCTION

Use this guide to replace a broken lens inside the camera.

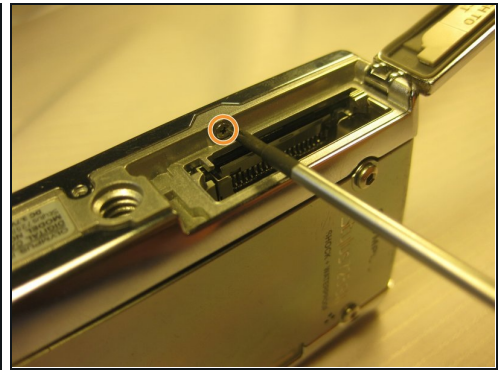
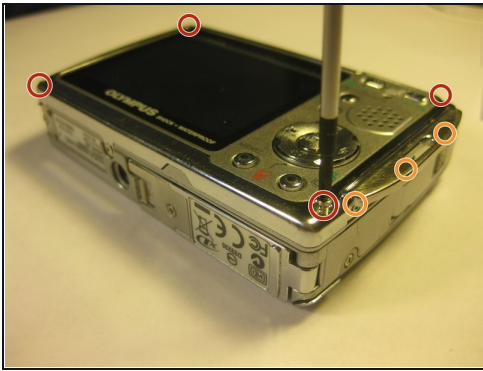
TOOLS:

1.5mm Hex Screwdriver (1)

Phillips #00 Screwdriver (1)

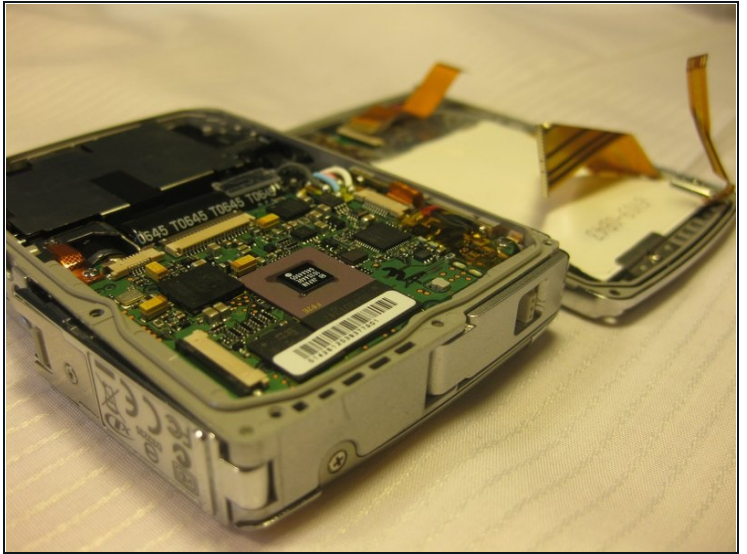
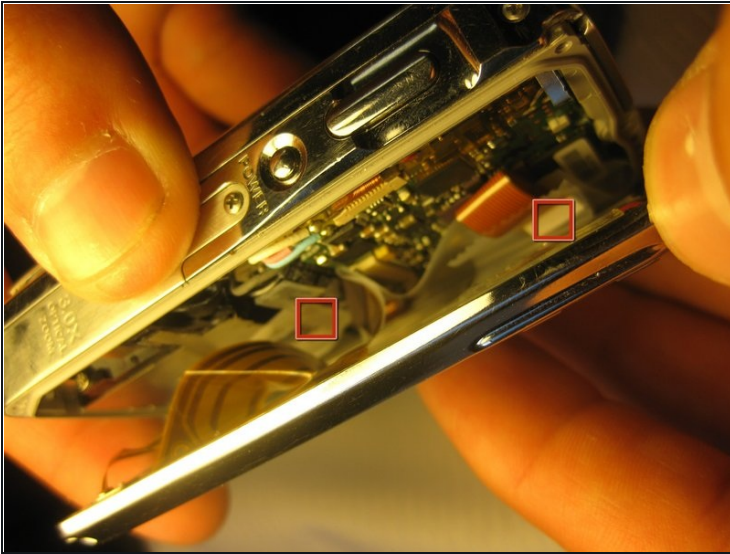
Spudger (1)

Step 1 — Disassembling Olympus Stylus 725 SW Back Panel



- Remove the four 3 mm long cover screws at the corners of the camera using a Phillips #00 screwdriver.
- Remove the 2 mm long screws securing the sides of the camera which holds the back panel using a Phillips #00 screwdriver.

Step 2



⚠ Be careful when removing the back cover; you will need to detach the connecting ribbons. Use [tweezers](#) if necessary.

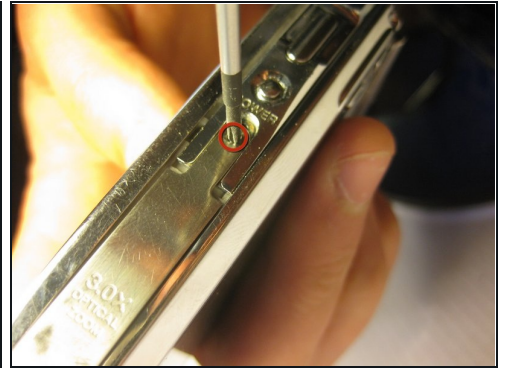
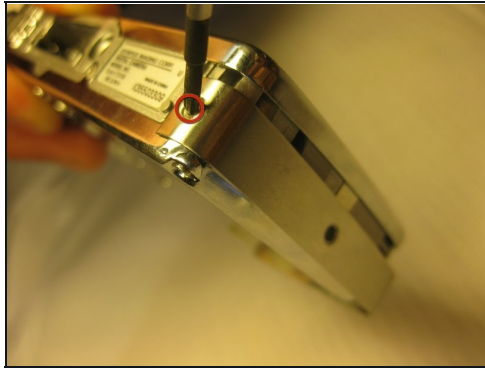
- Detach the ribbons using your thumb, sliding them out of their slots.
- Set the back panel face up to keep the ribbons from touching anything.

Step 3 — Front Panel



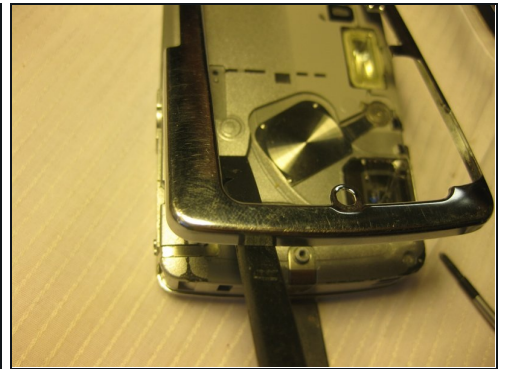
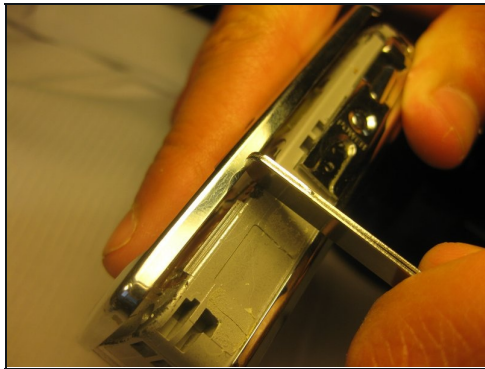
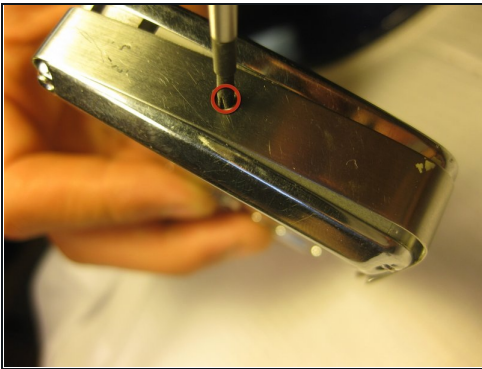
- Remove the top screws using a 1.5 mm screwdriver.
- Remove the single side screw located on the side of the camera where the tab is, using a #00 screwdriver.

Step 4 — Side Panels



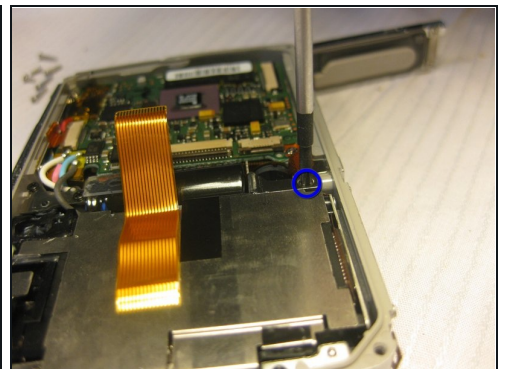
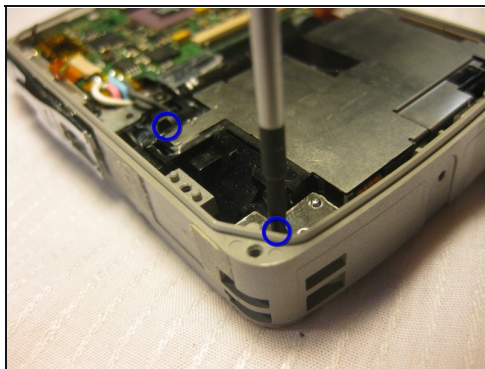
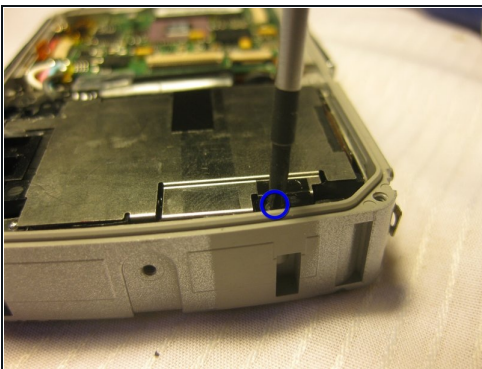
- Using a #00 Philips Head Screwdriver, remove the screws located on all four sides of the camera.

Step 5



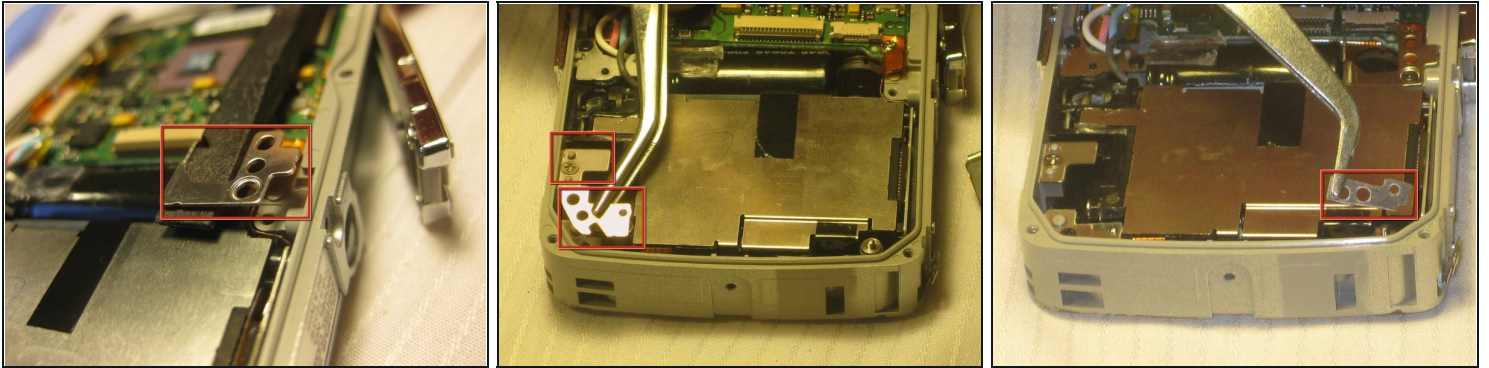
- After removing all four of the screws, pry the side covers off of the camera.

Step 6 — Lens



- Unscrew four 2mm long screws using the #00 Phillips screwdriver.

Step 7



- Remove four metal tabs from corners where the 2mm long screws were attached using [tweezers](#).

Step 8



- Remove the viewfinder lens using a prying device.
- There will be two ribbons attached to the viewfinder. Remove the ribbons by sliding them off the viewfinder with your thumb.

To reassemble your device, follow these instructions in reverse order.