



# Disassembling Olympus Stylus 725 SW Side Panels

Use this guide to remove the side panels to...

Written By: Bobby Hodges



---

## INTRODUCTION

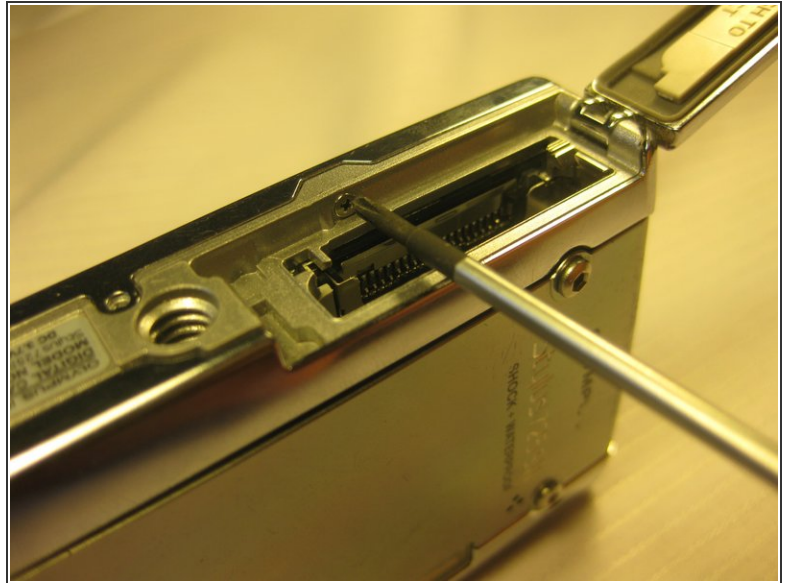
Use this guide to remove the side panels to access parts inside.



### TOOLS:

- [Phillips #00 Screwdriver](#) (1)
  - [Spudger](#) (1)
-

## Step 1 — Disassembling Olympus Stylus 725 SW Battery



**i** The battery is located on the bottom of the camera.

- Remove the battery by placing your thumb on the bottom flap and sliding the release button away from the side the lens is on. (The screwdriver is simply used as a reference point, no screws need to be removed)
- If the battery is dead, charge it for 60-90 minutes.

**!** When installing a charged battery, align the battery appropriately. The positive signs and negative should line up.

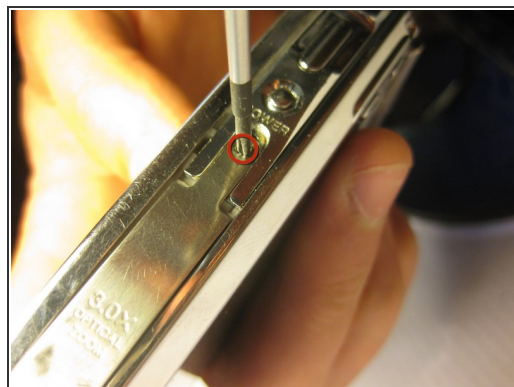
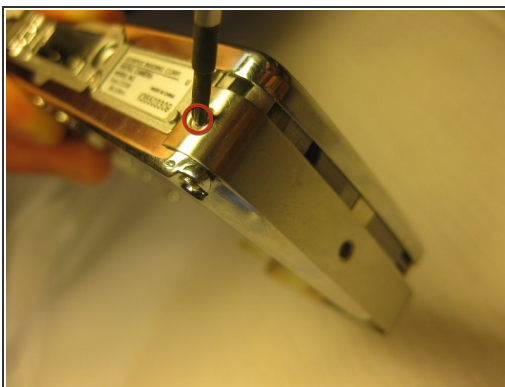


## Step 2 — Front Panel



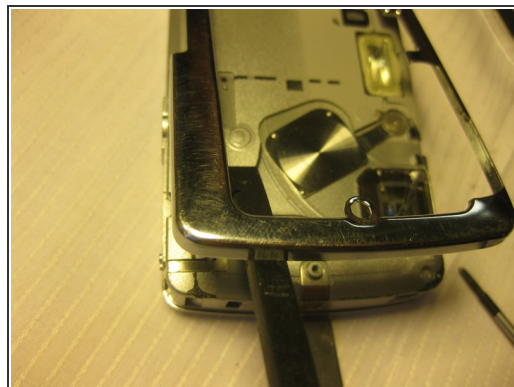
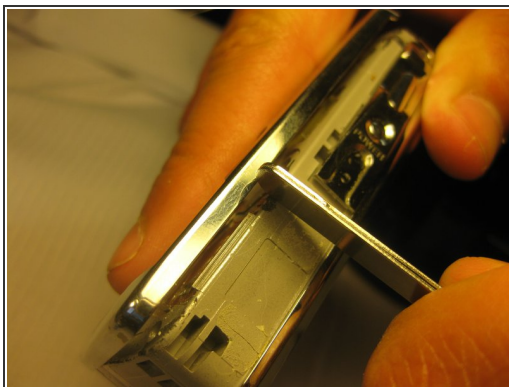
- Remove the top screws using a 1.5 mm screwdriver.
- Remove the single side screw located on the side of the camera where the tab is, using a #00 screwdriver.

## Step 3 — Side Panels



- Using a #00 Philips Head Screwdriver, remove the screws located on all four sides of the camera.

## Step 4



- After removing all four of the screws, pry the side covers off of the camera.

To reassemble your device, follow these instructions in reverse order.