



Sony PlayStation SCPH-9002 Teardown

I have a PlayStation 1, and i have decided to...

Written By: imacg517



INTRODUCTION

I have a PlayStation 1, and i have decided to make a new teardown of it.

I'm spanish, so my english is a bit poor, and sorry for the mistakes made in this teardown.

Without further delay, we start.



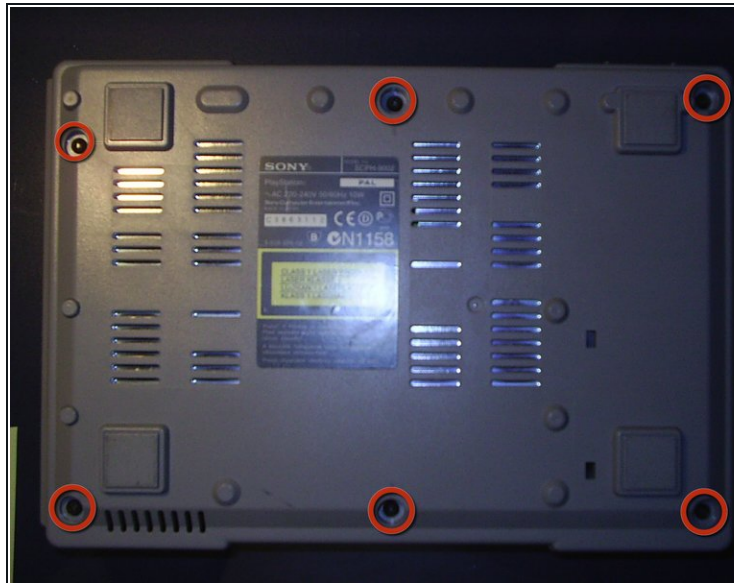
TOOLS:

[iFixit Opening Tool](#) (1)

[Spudger](#) (1)

[Mako Driver Kit - 64 Precision Bits](#) (1)

Step 1 — Sony PlayStation SCPH-9002 Teardown



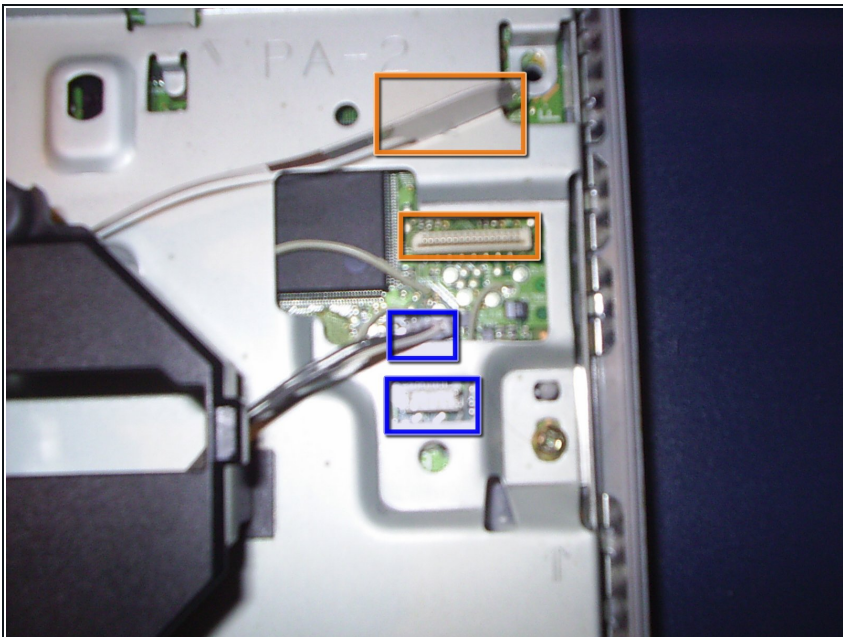
- Here's the PS1.
- Turn the PS1 over and remove the six screws.
- Note: part number +BV 3X14

Step 2



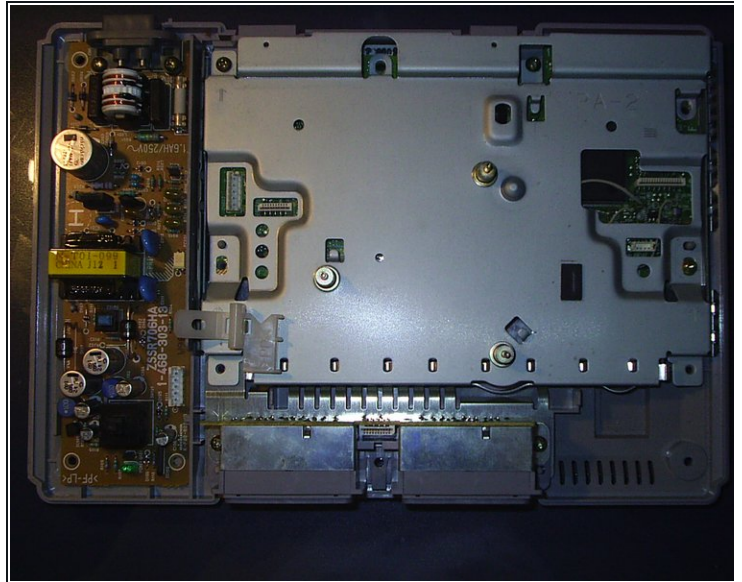
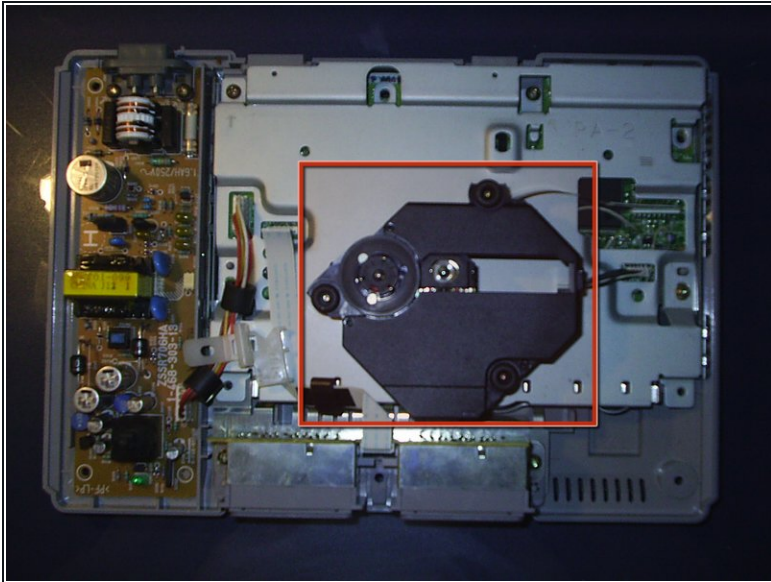
- Remove the top cover. It's very easy.

Step 3



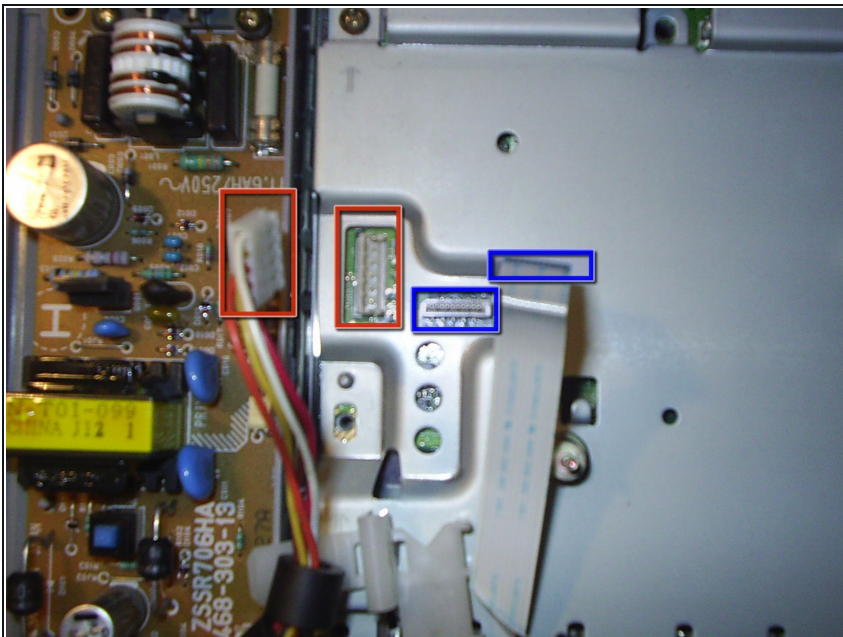
- Disconnect both CD-ROM connectors.
- CD connector one and the socket it connects to.
- CD connector two and the socket it connects to.
- Note: part number DEVICE OPTICAL KSM-440AEM

Step 4



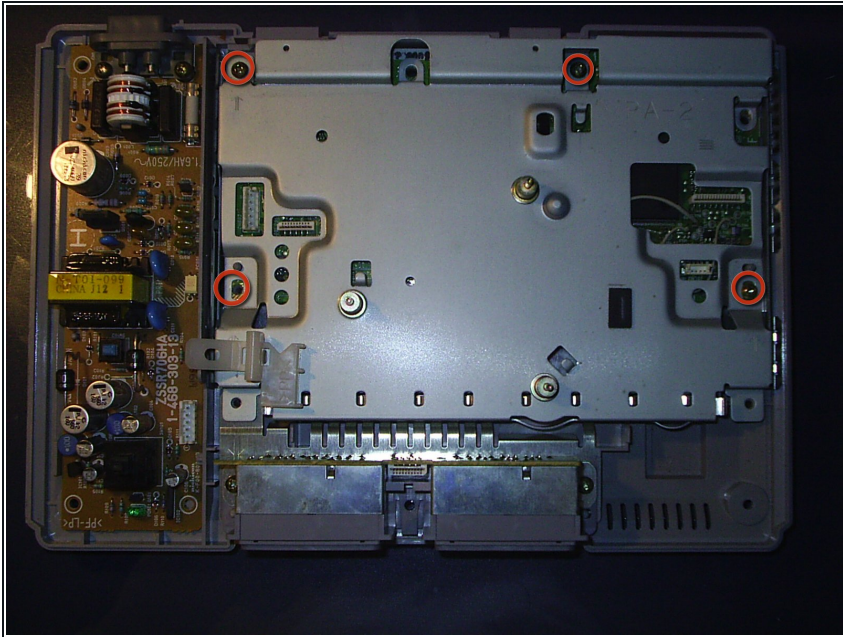
- Remove the CD-ROM reader. You should be able to pull it out gently, although you may have to wiggle it around a bit to loosen the rubber holders.

Step 5



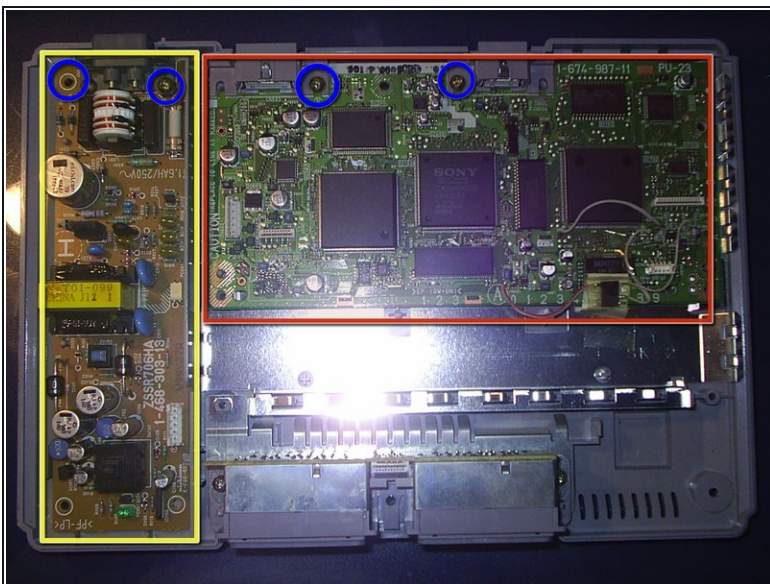
- Detach both cables. They go to the power supply and to the memory cards and controller connectors.

Step 6



- Remove the four screws and the metal cover.

Step 7



Reproduction Prohibited

SECTION 1 SPECIFICATIONS

SCPH-9

SCPH-9000

General
Power requirements
100V AC, 50/60 Hz
Power consumption
9 W
Dimensions
270 × 60 × 188 mm (w/h/d)
Mass
1.2 kg

Laser diode properties
• Material : GaAs
• Wavelength : 1 = 780 nm
• Emission duration : Continuous
• Laser output : Less than 440 μW
(measured at a distance of
200 mm from the lens surface
on the optical pick-up block)

Inputs/Outputs on the rear
Serial I/O port (1)
Outputs on the rear
AV Multi out port
Supplied accessories
AC power cord (1)
A/V connecting cable (1)
Analog controller (1)
Instruction manual (1)

Inputs/Outputs on the front
Controller ports (2)
Memory card slot (2)

SCPH-9002/AB/C

General
Power requirements
220-240 V AC, 50 Hz
Power consumption
10 W
Dimensions
270 × 60 × 188 mm (w/h/d)
Mass
1.2 kg

Laser diode properties
• Material : GaAs
• Wavelength : 1 = 780 nm
• Emission duration : Continuous
• Laser output : Less than 440 μW
(measured at a distance of
200 mm from the lens surface
on the optical pick-up block)

Inputs/Outputs on the rear
Serial I/O port (1)
Outputs on the rear
AV Multi out port (1)
AC power cord (1)
A/V connecting cable (1)
Analog controller (1)
Instruction manual (1)

Inputs/Outputs on the front
Controller ports (2)
Memory card slot (2)

SCPH-9001

General
Power requirements
120 V AC, 60 Hz
Power consumption
17 W
Dimensions
270 × 60 × 188 mm (w/h/d)
Mass
1.3 kg

Laser diode properties
• Material : GaAs
• Wavelength : 1 = 780 nm
• Emission duration : Continuous
• Laser output : Less than 440 μW
(measured at a distance of
200 mm from the lens surface
on the optical pick-up block)

Inputs/Outputs on the rear
Serial I/O port (1)
Outputs on the rear
AV Multi out port (1)
Supplied accessories
AC power cord (1)
A/V connecting cable (1)
Analog controller (1)
Instruction manual (1)

Inputs/Outputs on the front
Controller ports (2)
Memory card slot (2)

SCPH-9003

General
Power requirements
100-240 V AC, 50/60 Hz
Power consumption
11 W
Dimensions
270 × 60 × 188 mm (w/h/d)
Mass
1.2 kg

Laser diode properties
• Material : GaAs
• Wavelength : 1 = 780 nm
• Emission duration : Continuous
• Laser output : Less than 440 μW
(measured at a distance of
200 mm from the lens surface
on the optical pick-up block)

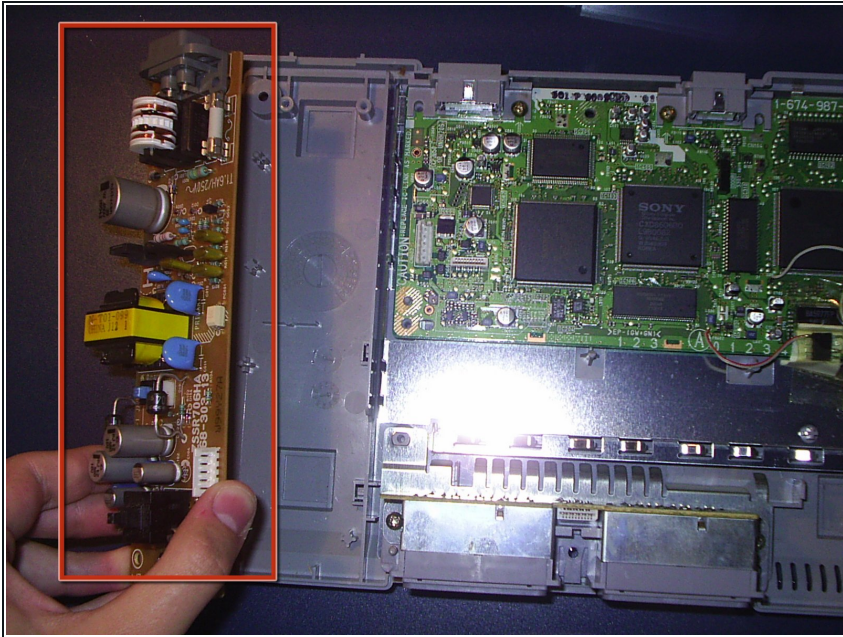
Inputs/Outputs on the rear
Serial I/O port (1)
Outputs on the rear
AV Multi out port (1)
AC power cord (1)
A/V connecting cable (1)
Analog controller (1)
Instruction manual (1)

Inputs/Outputs on the front
Controller ports (2)
Memory card slot (2)

Design and specifications are subject to change without

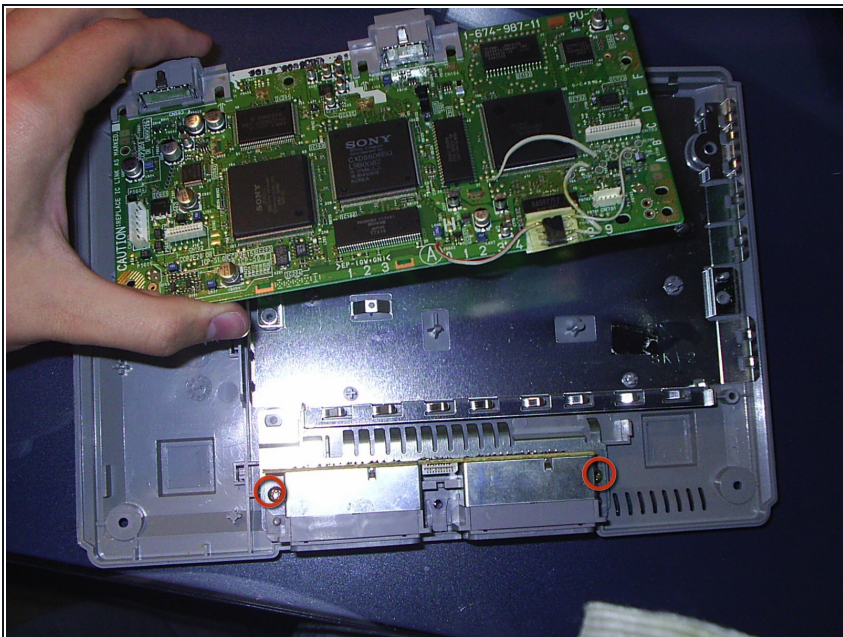
- Now you have the motherboard!
- And the power supply.
- Remove the four screws from the motherboard and the power supply.

Step 8



- Once the screws are removed, remove the power supply.

Step 9



- Remove the motherboard, and both of the screws from the memory card/ controller connection mechanism.

Step 10



- Now, you have all your PlayStation 1 parts!
- Main Board
- Lower Casing
- EMI Shield
- Power Supply
- Disk Reader
- Memory Card/ Controller Mechanism