



Toshiba Satellite M45 Motherboard Replacement

How to remove or replace a faulty motherboard in a Satellite M45.

Written By: Nick



INTRODUCTION

Use this guide to replace a damaged motherboard in your Toshiba Satellite M45.

The Motherboard is a circuit board that connects important hardware such as the Graphics Cards, Solid State Drives, Hard Drives, Ram, Mouse and keyboard.

A faulty motherboard can damage the hardware components connected making it undetectable by the computer and may slow down performance. A faulty motherboard can cause overheating, show the monitor screen freezing or a display bluescreen. Signs of a damaged motherboard are dust build up, burnt chipset and a computers old age.

Before using this guide, make sure to review the [Toshiba Satellite M45 troubleshooting page](#)-check to see if your laptop has a motherboard related problem. If you are sure it's a motherboard related problem then make sure to review the [troubleshooting page](#)- Motherboard related problems sometimes can be fixed with updating the BIOS or configuring the CMOS.



TOOLS:

- [Spudger](#) (1)
 - [Phillips #00 Screwdriver](#) (1)
 - [Phillips #1 Screwdriver](#) (1)
 - [iFixit Opening Tool](#) (1)
-

Step 1 — Battery



⚠ Make sure device is off and power supply is disconnected.

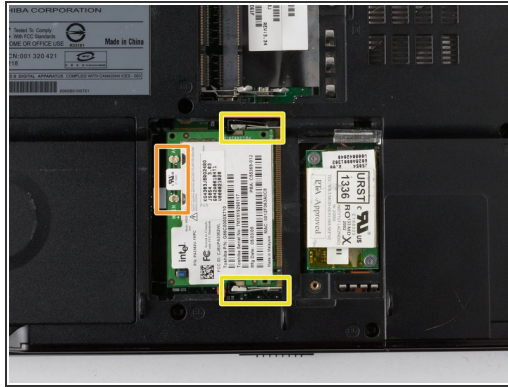
- Flip the laptop to the bottom side.
- Locate and slide the two battery locks to disconnect the battery.
- Remove the battery by sliding it out away from the computer (horizontal with the casing).

Step 2 — RAM



- Use a #1 Phillips head screwdriver to remove the screw on the middle right of the RAM's cover panel.
- Then, use a the blue iFixit Opening Tool to pry the cover panel off.
- Push on to the RAM tabs to disconnect the RAM form the device.
- The RAM will pop off from the socket. Gently pull the RAM out of the socket.

Step 3 — Wi-Fi Card



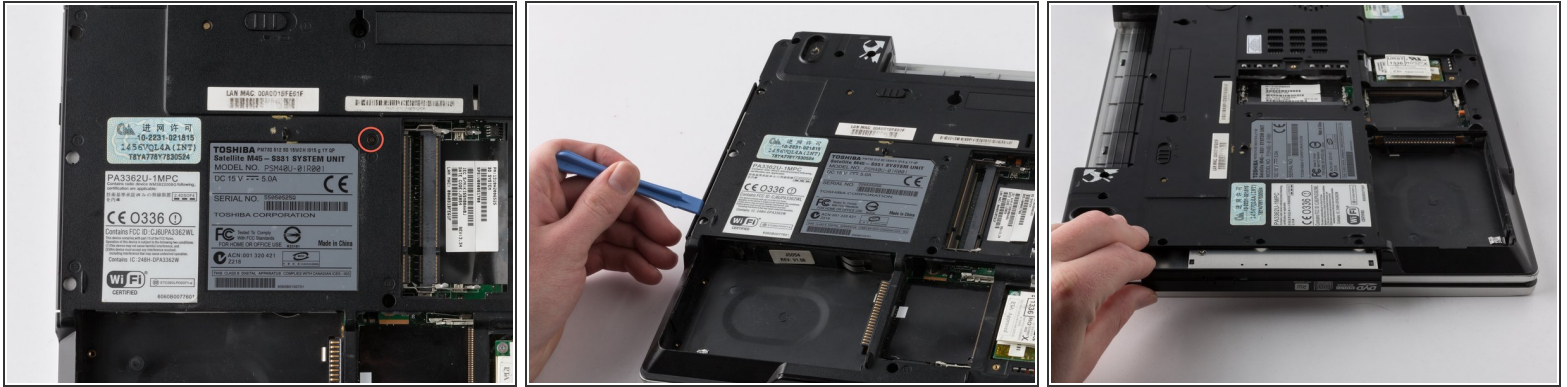
- Use the #1 Phillips head screwdriver to unscrew the panel.
- Disconnect the black and white wires.
- Push on the tabs to disconnect the Wi-Fi card.
- Use the blue iFixit Opening Tool to pull the Wi-Fi Card out.

Step 4 — Hard Drive



- Use the #1 Phillips head screwdriver as to remove the hard drive screw.
- Use the blue iFixit Opening Tool to pry the cover off.
- Use the plastic flap to pull the hard drive out of its slot.

Step 5 — Optical Drive



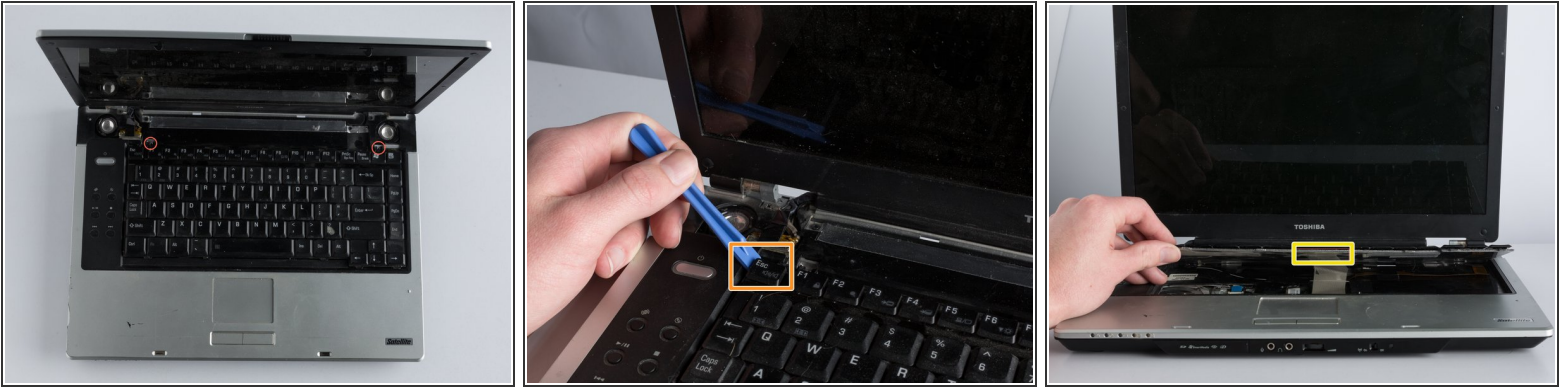
- Use the #1 Phillips head screwdriver remove the Optical Drive screw.
- Use the blue iFixit Opening Tool to pry the Optical Drive out of the slot from the side of the casing.
- Use your hands to pull the rest of the Optical Drive out.

Step 6 — Keyboard



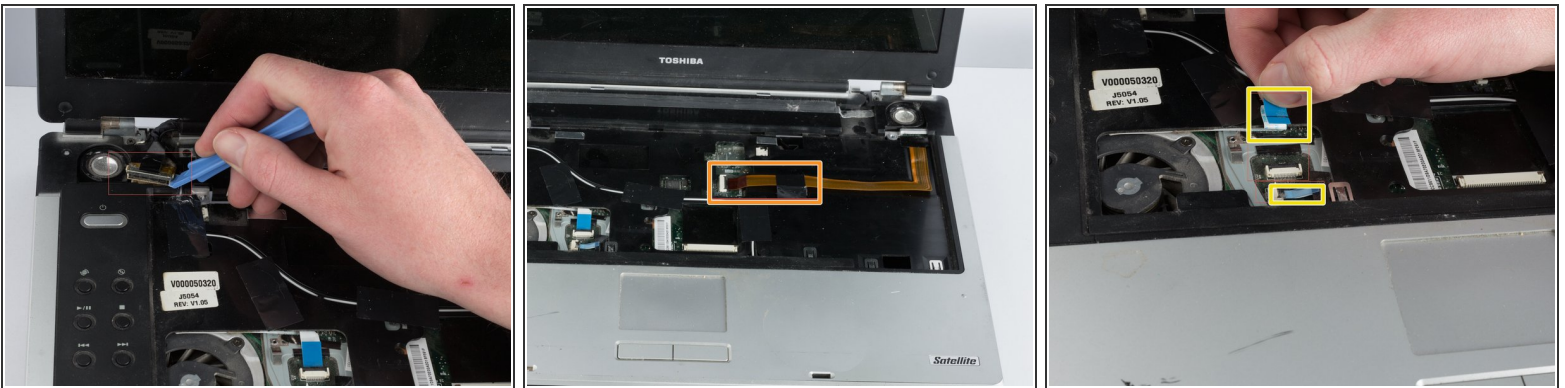
- Carefully use the blue iFixit Opening Tool to pry the panel above the keyboard from the left and right side.
- Push back the screen until it is flat with the laptop.
- Gently remove the clips that connect the panel to the screen.

Step 7



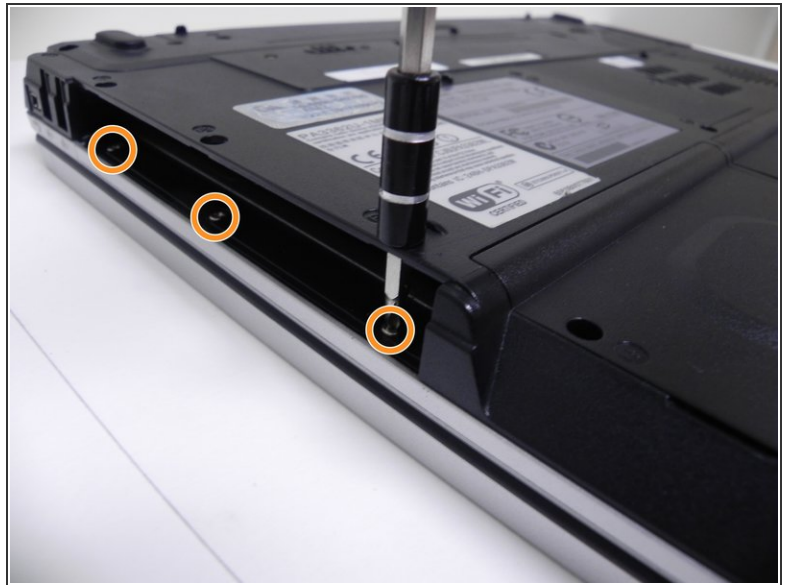
- Use the Phillips #1 screwdriver to remove the two screws.
 - Gently pry the keyboard from the laptop using the blue iFixit opening tool.
 - Slowly lift the keyboard away from the laptop.
 - Remove the ribbon that connects to the laptop.
- ⚠ Ensure you remove the keyboard slowly to avoid damaging the ribbon cable.

Step 8 — Motherboard



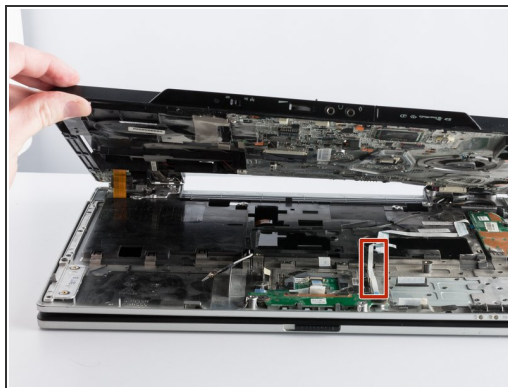
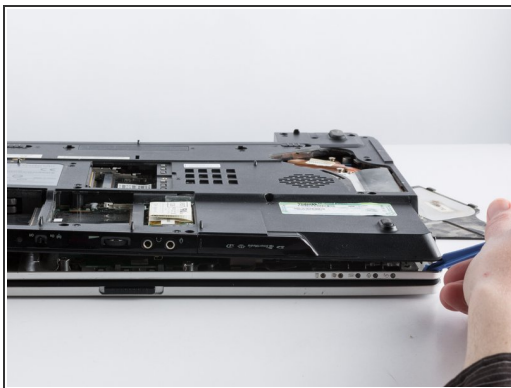
- Disconnect the video cable, then slowly and firmly pull the video cable upwards.
- Disconnect the brown ribbon located in the middle area of the laptop.
- Disconnect the two white ribbons located in the bottom left of the laptop.
 - Firmly pull out the two white ribbons.

Step 9



- Use the Phillips #00 Screwdriver to unscrew all the screws.
- Unscrew three additional screws through the three holes on the optical drive.

Step 10



- Turn the laptop upside down.
 - Use the blue iFixit Opening Tool to slowly pry the case upward.
 - Remove the white ribbon
- i** Make sure to completely remove the white ribbon and set it to the right side of the motherboard. and not on top of the motherboard.

Step 11



- Lift up the motherboard.
- ⓘ Be careful not to rip out small components on the motherboard. Carefully remove the motherboard.

To reassemble your device, follow these instructions in reverse order.