



Dell Latitude D600 Wireless WiFi Card Replacement

Replacing the intel wireless card, available for around 5 dollars on ebay

Written By: Joseph



INTRODUCTION

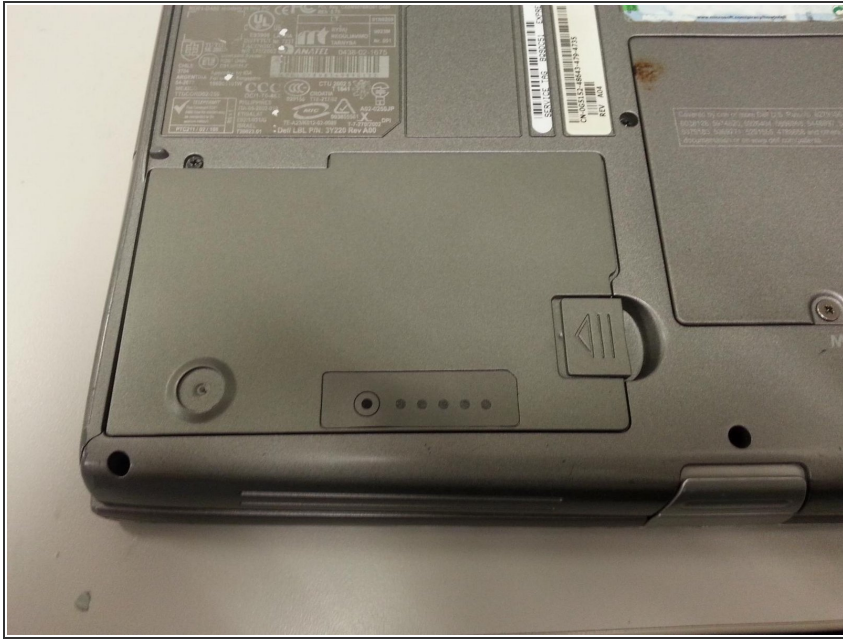
Replacing the intel wireless card, available for around 5 dollars on ebay



PARTS:

- [Screwdriver](#) (1)
-

Step 1 — Battery



- Find the battery

Step 2



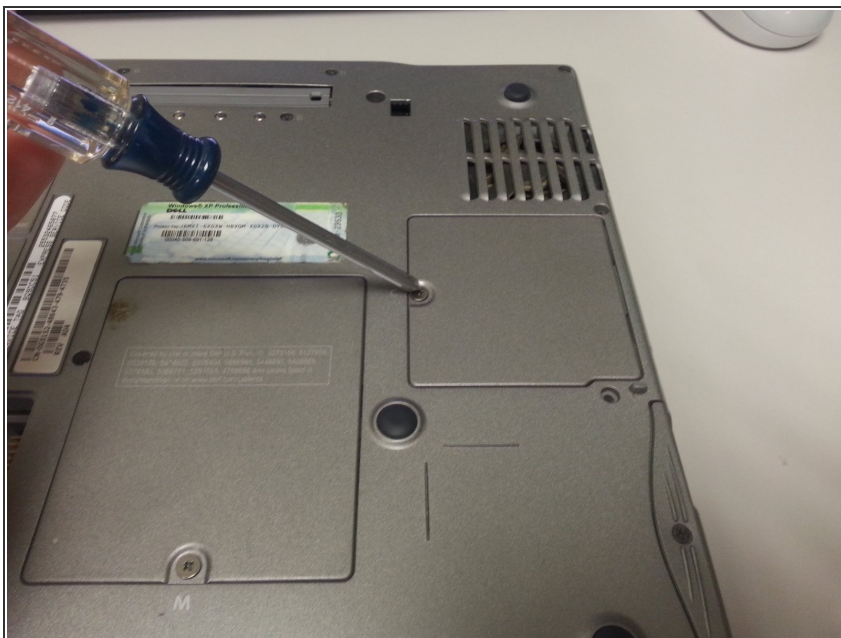
- Pull the tab to release the battery

Step 3



- Pull the battery out

Step 4 — Wireless WiFi Card



- Use your screwdriver to unscrew and lift up the panel on the right labeled with a C

Step 5



- Pull off the two wires connected to the wireless card
- They should come off fairly easy



Step 6



- Pull the two tabs away from the card and pull up on the intel card
- Then pull it away from the holding slot to remove it

Step 7



-  When placing in your new wireless card, connect the two wires before inserting into the slot
-  Then line it up, put the card in at an angle and push down so the side tabs lock it into place

To reassemble your device, follow these instructions in reverse order.