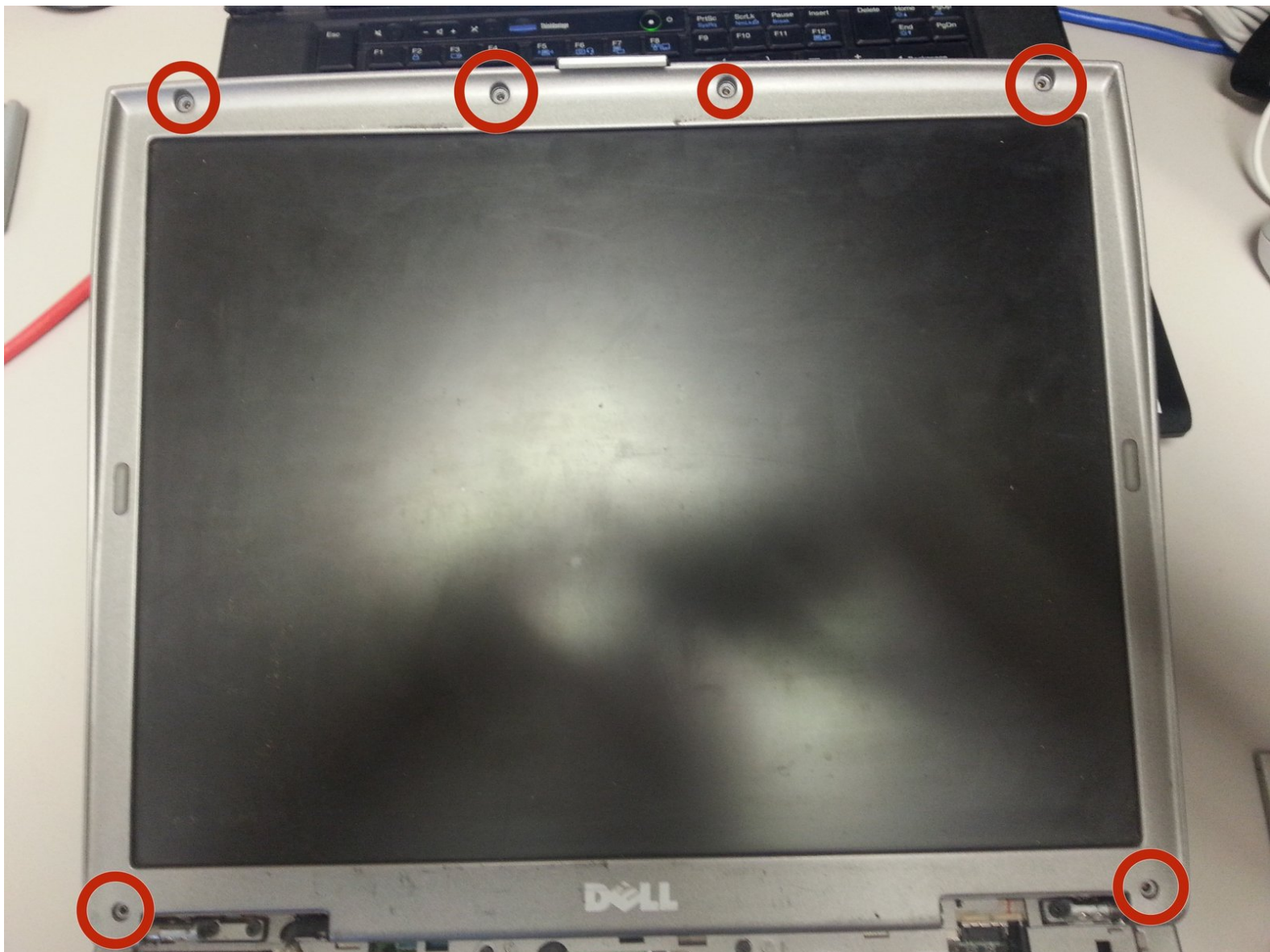




Dell Latitude D600 Display Replacement

Replace a broken screen

Written By: Joseph





TOOLS:

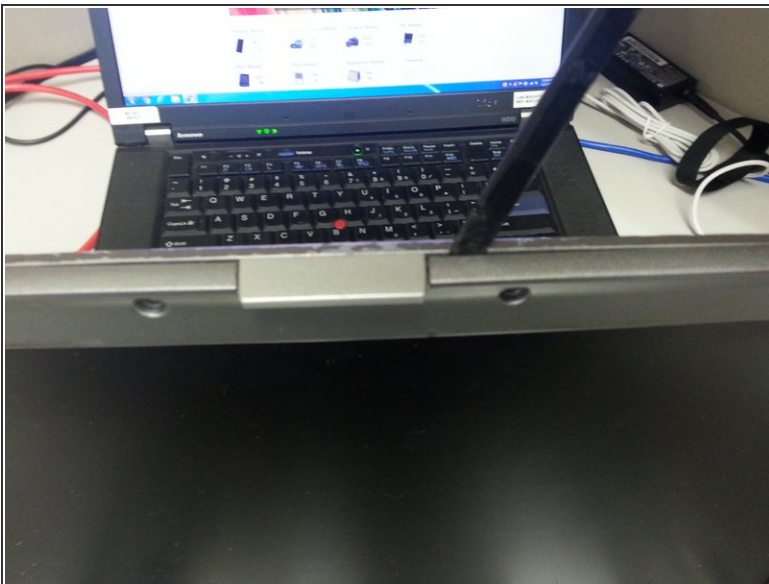
- [Spudger](#) (1)
 - [Screwdriver](#) (1)
-

Step 1 — Display



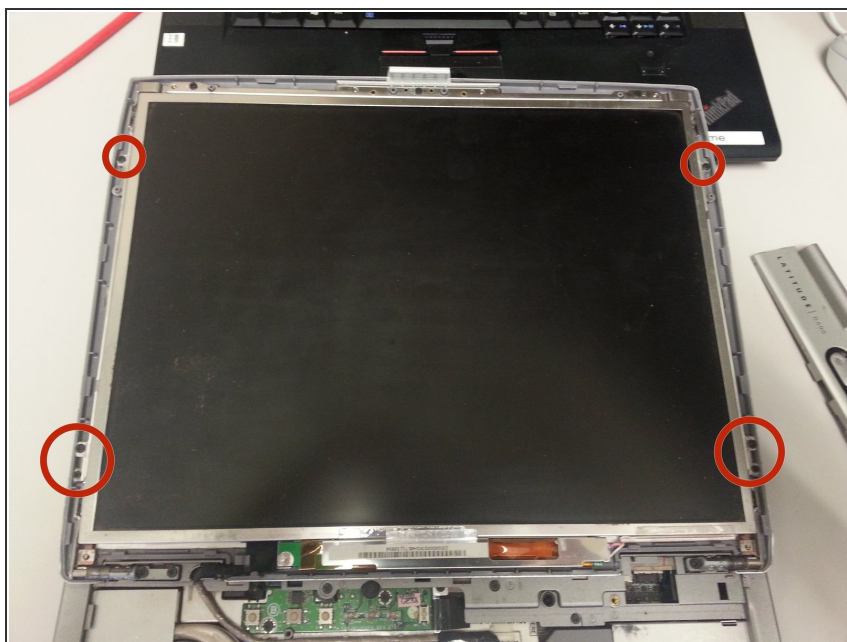
- Remove the 6 screws underneath the rubber things - located in red

Step 2



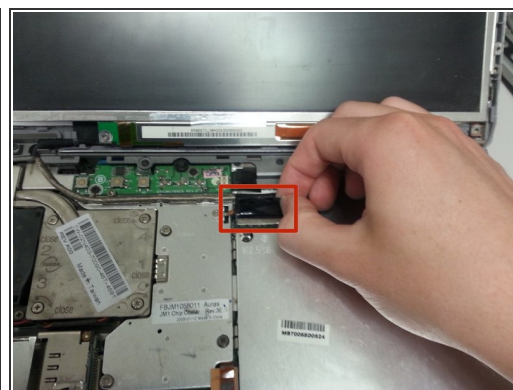
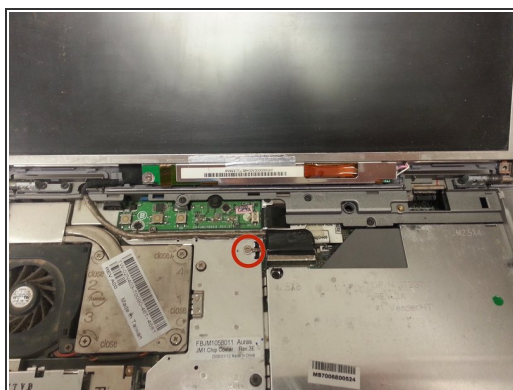
- Use your spudger to pry off the front case
- Go all around the perimeter and pop it off

Step 3



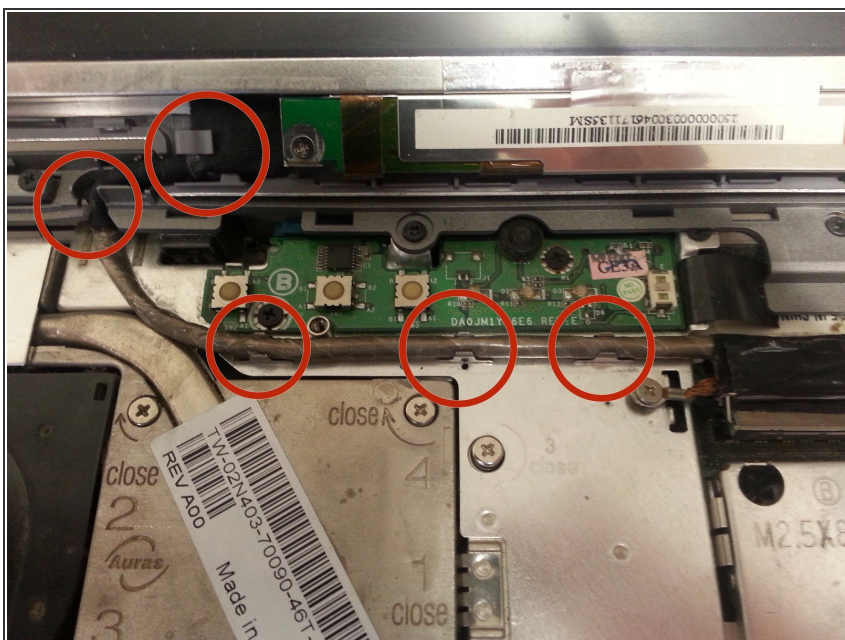
- Remove the 6 screws holding in the display screen

Step 4



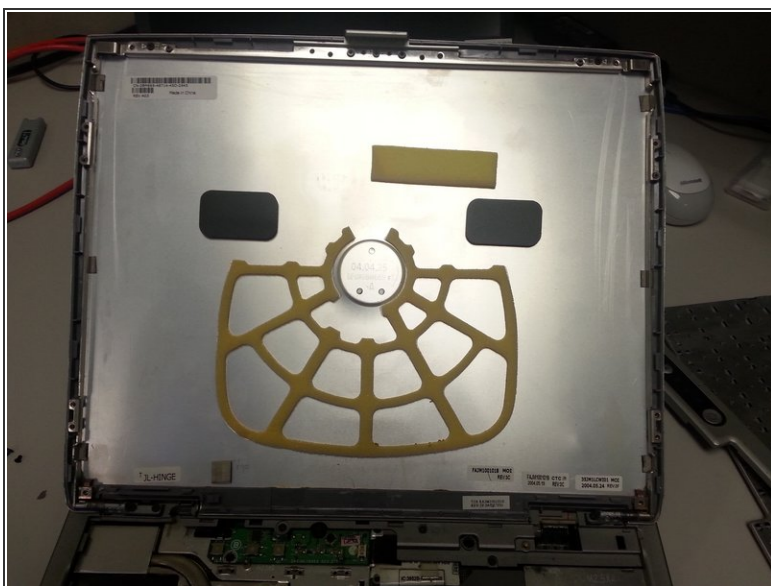
- Remove the screw holding in the display cable connector
- Pull the black tab up to remove the display cable connector

Step 5



- Slowly Remove the wire from the joints holding it in

Step 6



- The computer is happy you are fixing him
- Thats it, display is now removed feel free to replace it by doing the steps in reverse

To reassemble your device, follow these instructions in reverse order.