



# Disassembling Nokia 3395 Inner Components

We will now disassemble the guts of the phone,...

Written By: Nico Lee



## INTRODUCTION

We will now disassemble the guts of the phone, including the SIM card reader, vibrating unit, power toggle button, audio speaker, power assembly/microphone, and the battery connector.

---

### TOOLS:

Spudger (1)

T6 Torx Screwdriver (1)

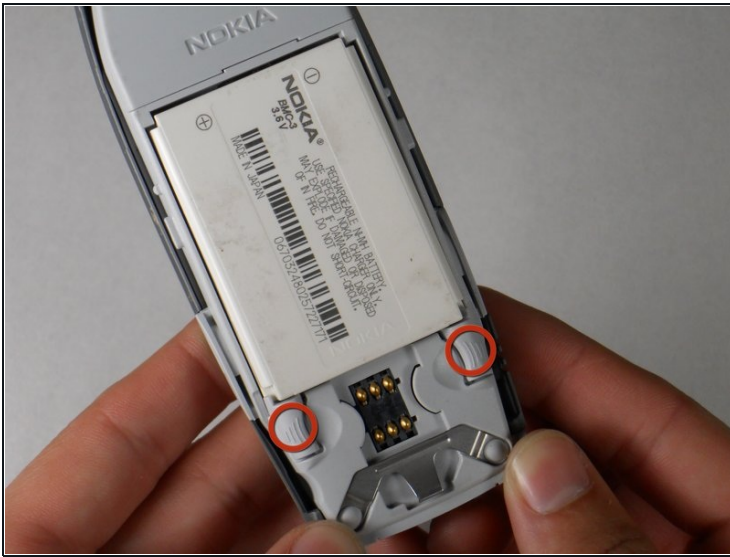
---

### Step 1 — Back Case



- Turn the phone off.
- Hold the phone, and gently press the white button located at the bottom of the phone.
- While pressing the button, slide the back plate upwards, opening the plate.

## Step 2 — Battery



- Locate grey buttons beneath battery (shown).
- Spread buttons simultaneously away from each other and the battery will pop out.
- Remove battery from phone.

## Step 3 — Front Case



- Push the two black buttons on the side with your thumbs forward. This will release the front faceplate.
- Flip over the device, and pry the faceplate away.

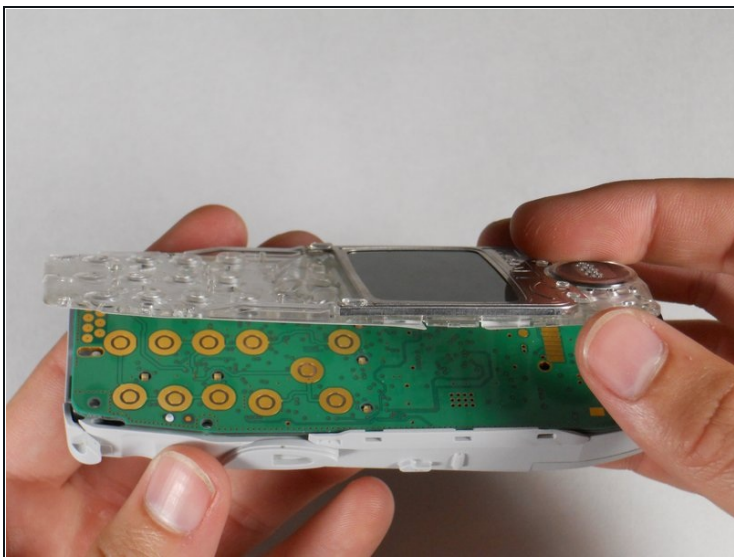
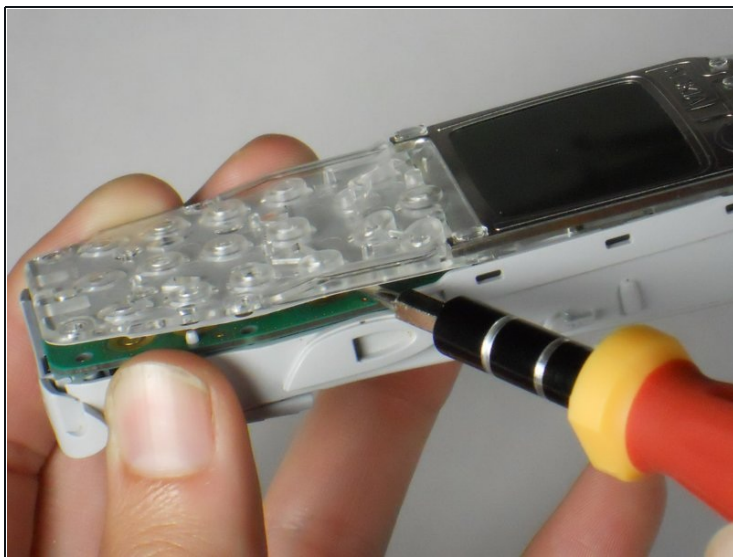


## Step 4 — Screen



- Remove six T6 screws.

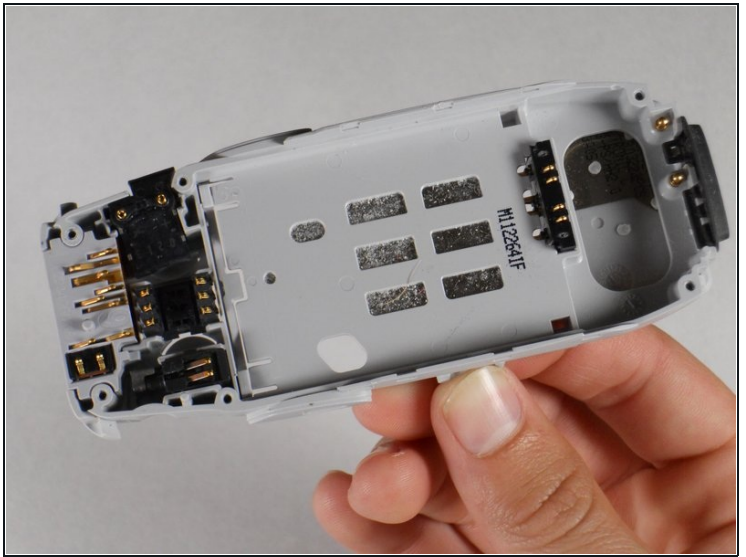
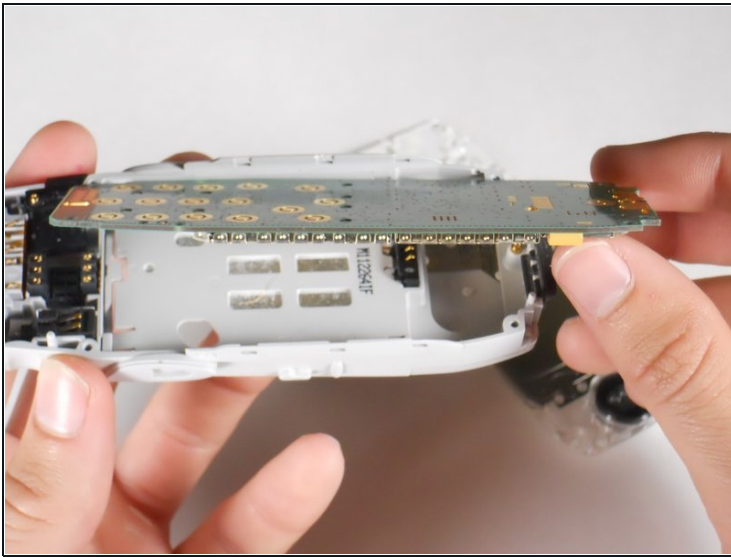
## Step 5



- Insert spudger between screen assembly and phone body.

⚠ Spread apart as shown. Avoid damaging the screen assembly by removing the screen slowly.

## Step 6 — Logic Board



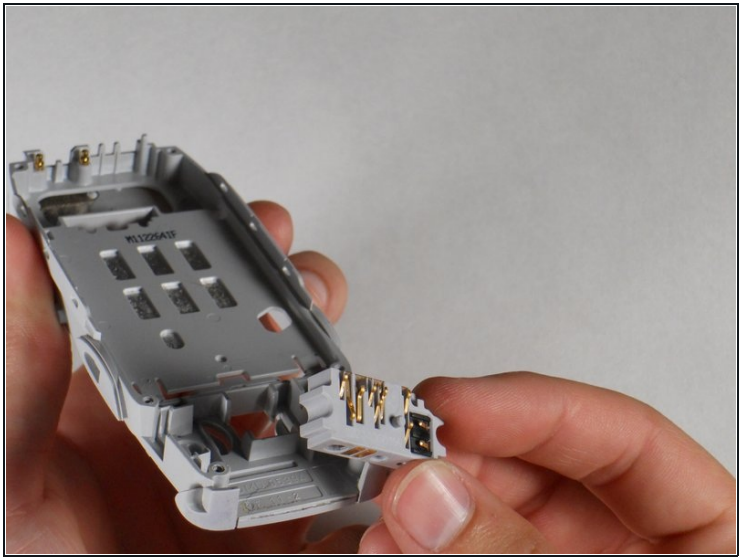
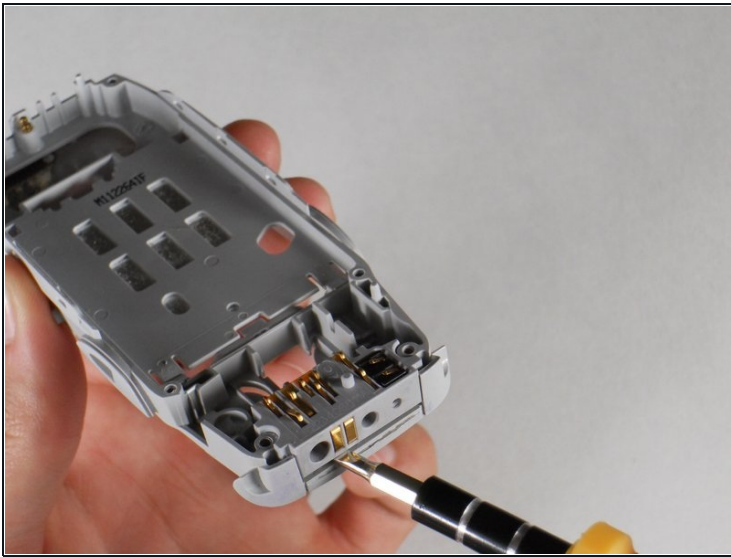
- Remove logic board as shown.

## Step 7 — Inner Components



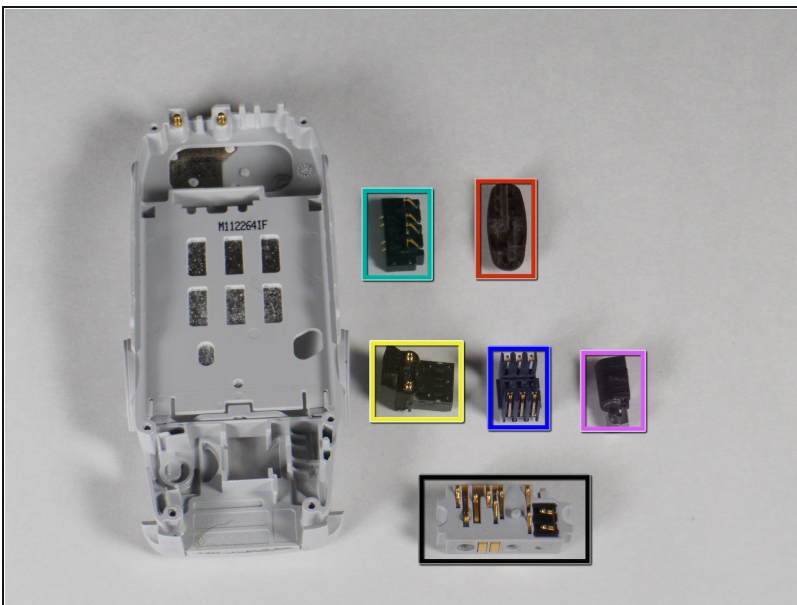
- ☑ Use the following legend to locate each component:
- Microphone/power assembly.
  - Vibrating unit.
  - SIM card reader.
  - Audio speaker.
  - Power toggle button.
  - Battery connector.

## Step 8



- Insert spudger between power assembly/micro-phone and phone body.
- Pry as shown and remove the power assembly/microphone.

## Step 9

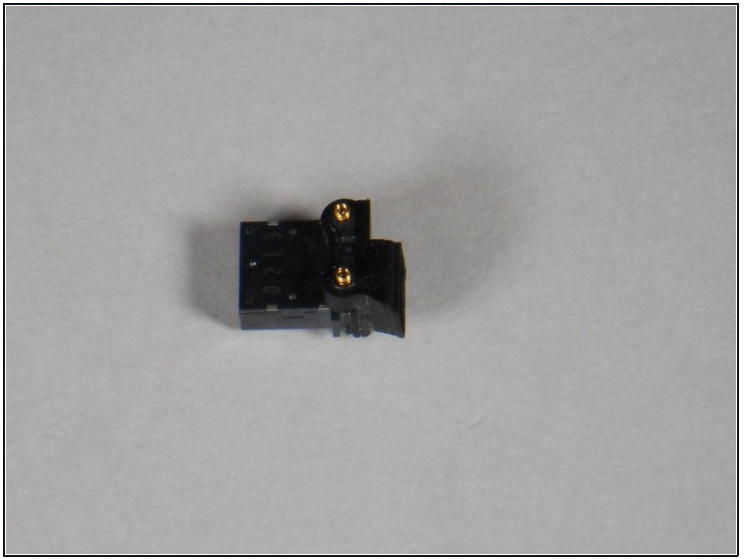
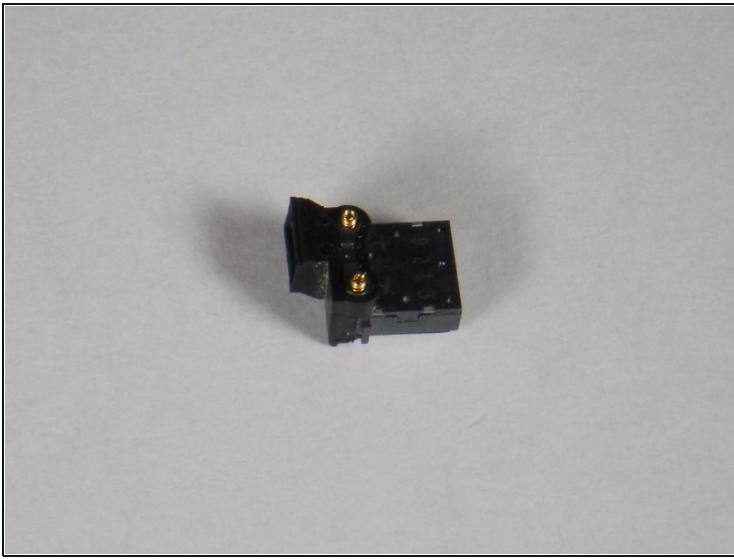


① Once located, the following components are easily removed by pulling them out with your hand.

- Microphone/power assembly.
- Vibrating unit.
- SIM card reader.
- Audio speaker.
- Power toggle button.
- Battery connector.

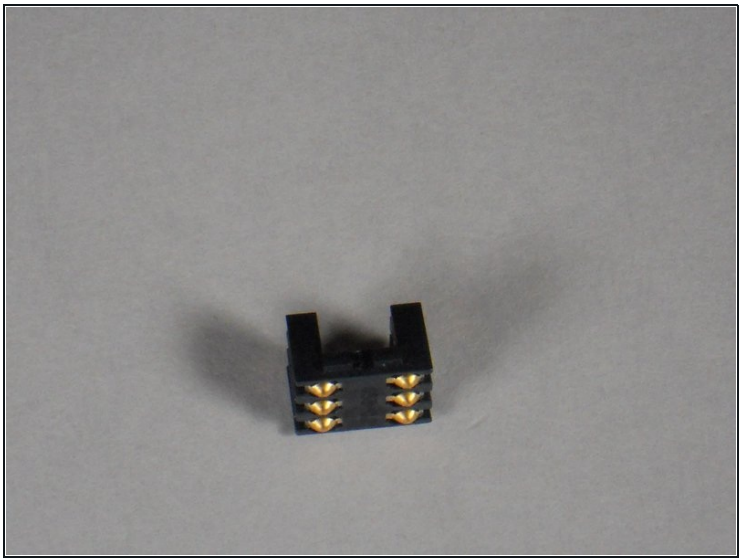
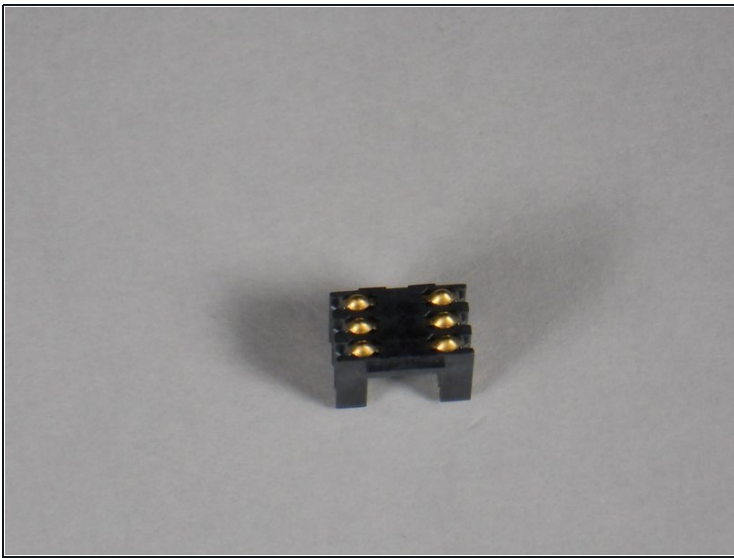


## Step 10



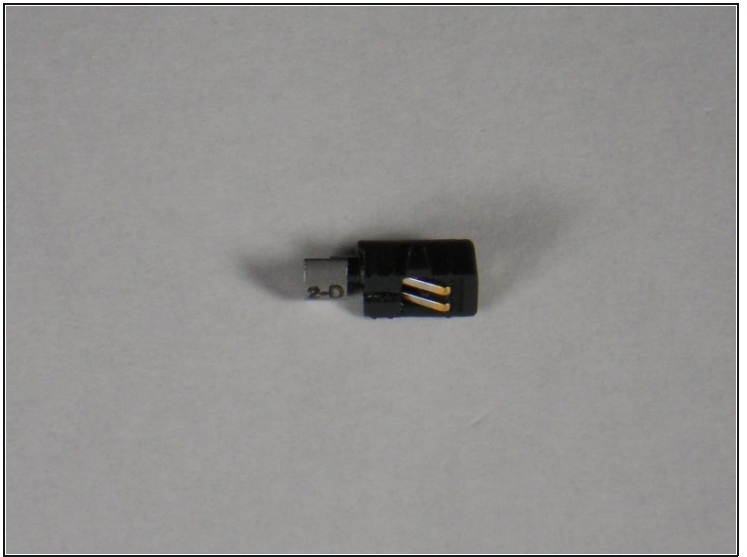
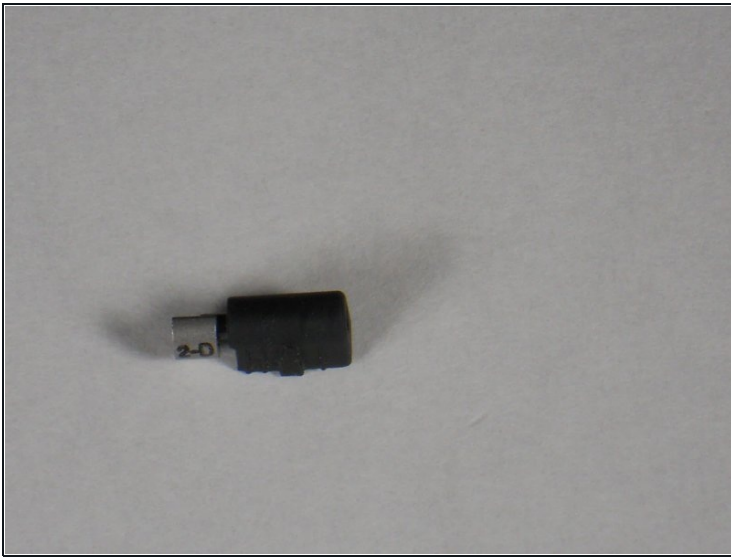
- Audio speaker.

## Step 11



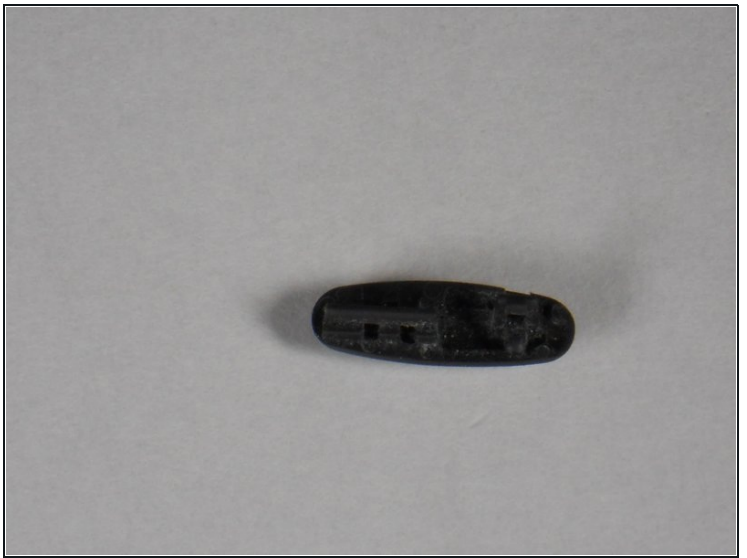
- SIM card reader.

## Step 12



- Vibrating unit.

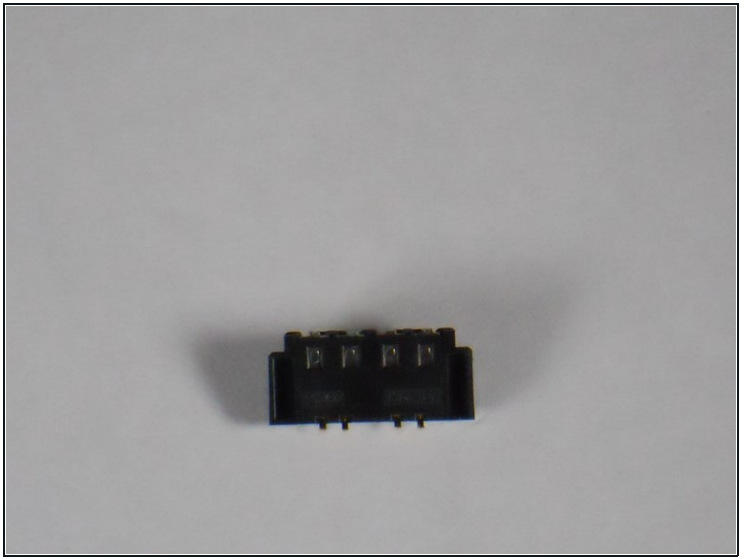
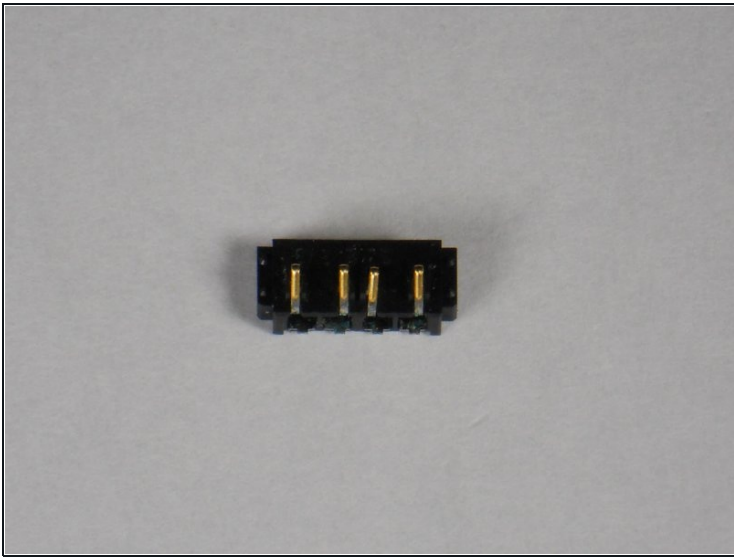
## Step 13



- Power toggle button.



## Step 14



- Battery connector.

---

To reassemble your device, follow these instructions in reverse order.