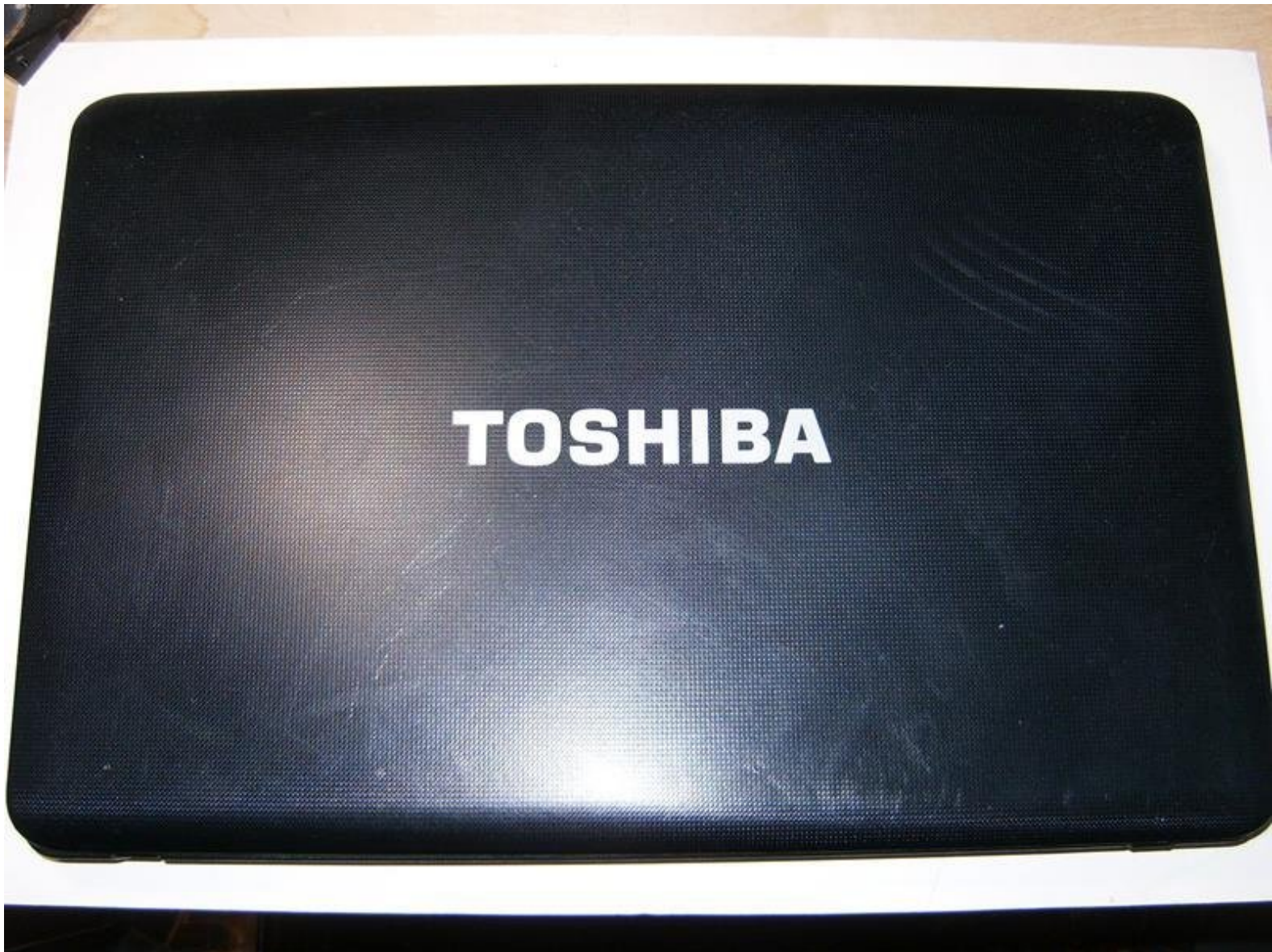




Toshiba Satellite C655D-S5200 LCD Replacement

Here is a Toshiba C655D-S5200 that had a broken case. I did remove the LCD and feel this may be helpful for anybody trying to replace the LCD. Straight forward and not to complicated.

Written By: oldturkey03



INTRODUCTION

Typical Toshiba and no service manuals available. The LCD on this laptop was removed for other purposes. This is a straight forward task and only requires minimal tools.

TOOLS:

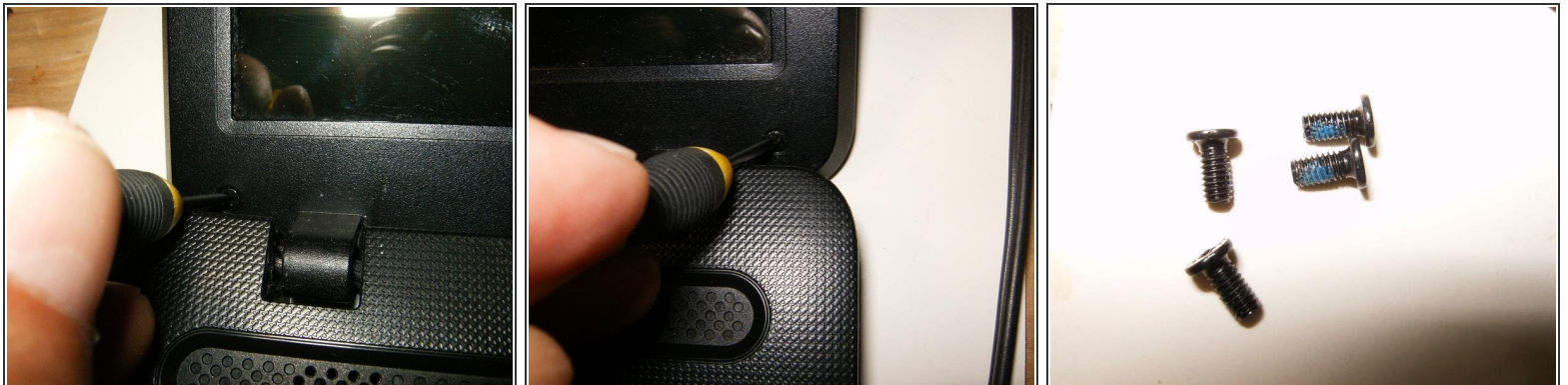
- [Phillips #00 Screwdriver](#) (1)
 - [iFixit Opening Tools](#) (1)
-

Step 1 — LCD



- Here is the Toshiba Satellite C655D-S5200
- Open the laptop with the LCD facing forward. There are four rubber caps, one in each corner
- Removing the plugs reveal the Phillips screws

Step 2



- Remove all four screws, tow on top left and right corner
- One on the bottom left corner
- and the bottom right corner.
- Here are the four M3x5mm screws

Step 3



- Use a plastic opening tool, or similar to pop the bezel of the LCD assembly
- Continue to slide the tool all the way across the top
- Once the bezel has been released from the tabs, it can be further released by applying some gently manual pulling

Step 4



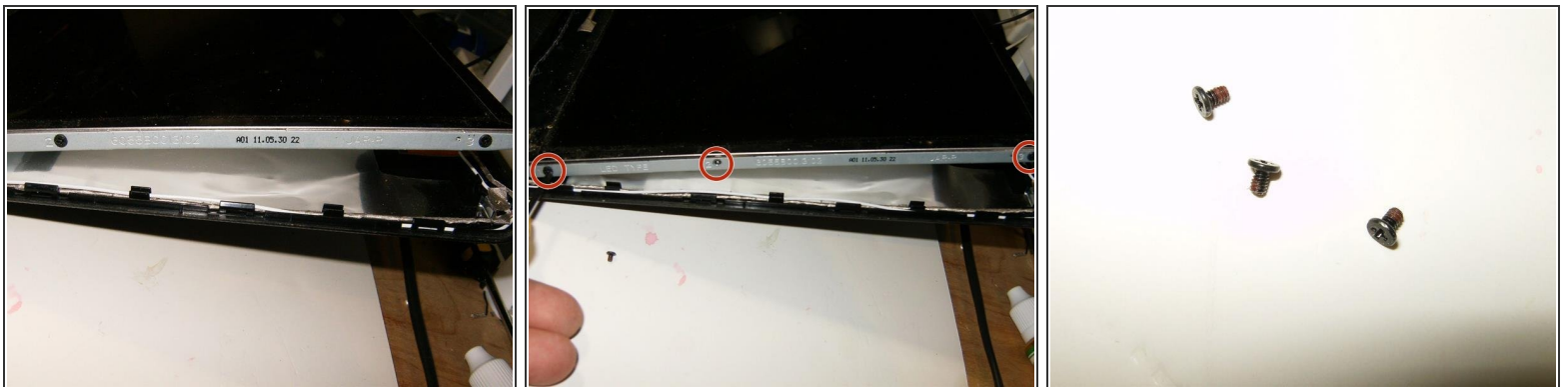
- Continue to pull gently on the sides
- and finally on the bottom.
- With all the tabs released the bezel can now be removed.

Step 5



- Here is the LCD assembly without the bezel
- Remove the Phillips screw that connects the LCD frame to the back cover. This is the left one
- Remove the right one as well

Step 6



- The LCD can now be moved forward and away from the rear cover
- There are three screws on either side that hold the panel to the frame. Remove those
- Here are the three M2x4 screws

Step 7



- Remove the three Phillips screws on the right side as well.
- with the screws removed the panel can now be moved out of the LCD frame. The LCD is still connected by the display cable.
- The display cable is secured to the connector with some clear adhesive. Remove this first

Step 8



- Remove the display cable carefully.
- With the display cable disconnected, the LCD can now be removed and replaced.

To reassemble your device, follow these instructions in reverse order.