



Panasonic SA-HT810V DVD Drive Replacement

This is a guide for uninstalling a DVD drive and reinstalling a new one.

Written By: Nathan Cheadle





TOOLS:

- [64 Bit Driver Kit](#) (1)
-

Step 1 — DVD Drive



- With the front display of the device facing you, rotate the device 90 degrees counter clockwise.
- Now rotate the device 180 degrees and remove the second screw.
- Remove the screw that is on the right side of the panel facing you.
 - Remove all screws with a phillips head screwdriver.

Step 2



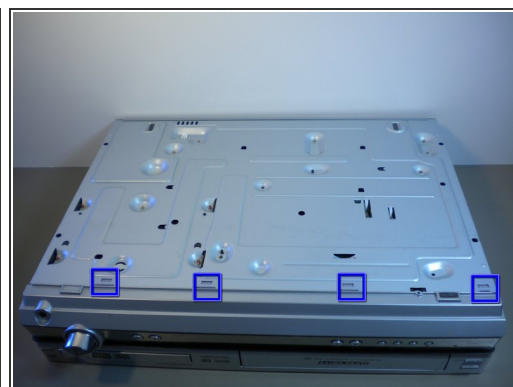
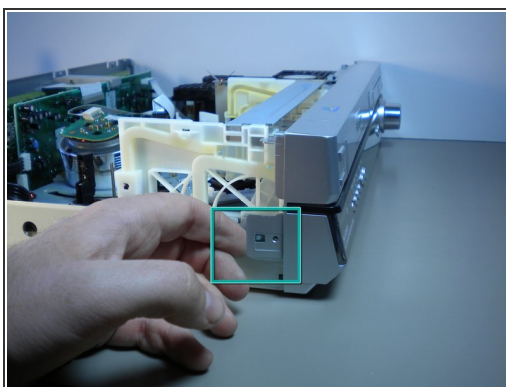
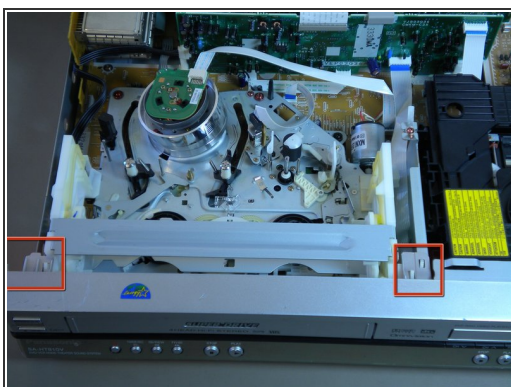
- Rotate the device so that the back faces you.
- Using a phillips head screw driver, locate and remove the two screws highlighted by the red circles in image one.

Step 3



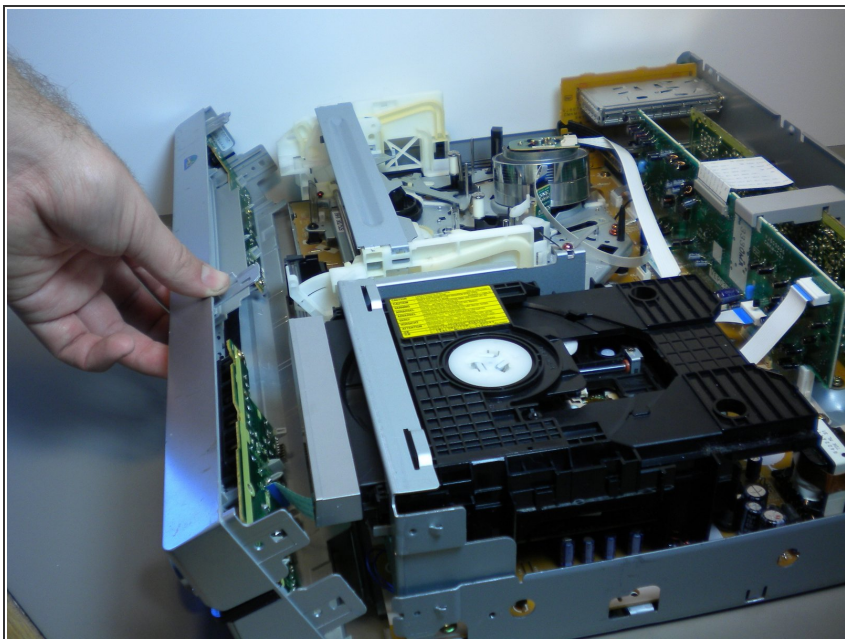
- Before removing cover make sure that the back of the device is facing you.
- Remove the top cover by bending out on the sides, and pulling the cover towards you while applying upward pressure.

Step 4



- Pull up the two tabs on top
- Pull the the three tabs on the side. One is on the left, and two are on the right side of the device when it is facing you.
- Depress the four tabs on the bottom of the device with a flat head screwdriver.

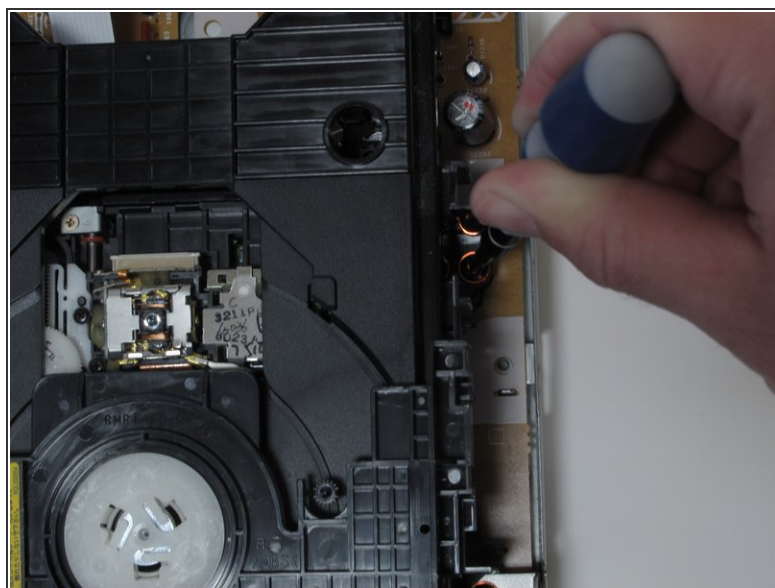
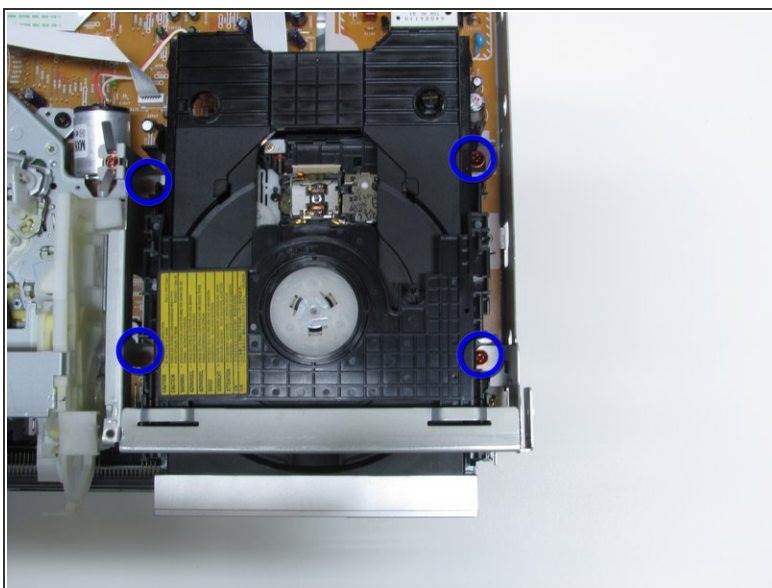
Step 5



- Carefully pull off the front panel of the device.

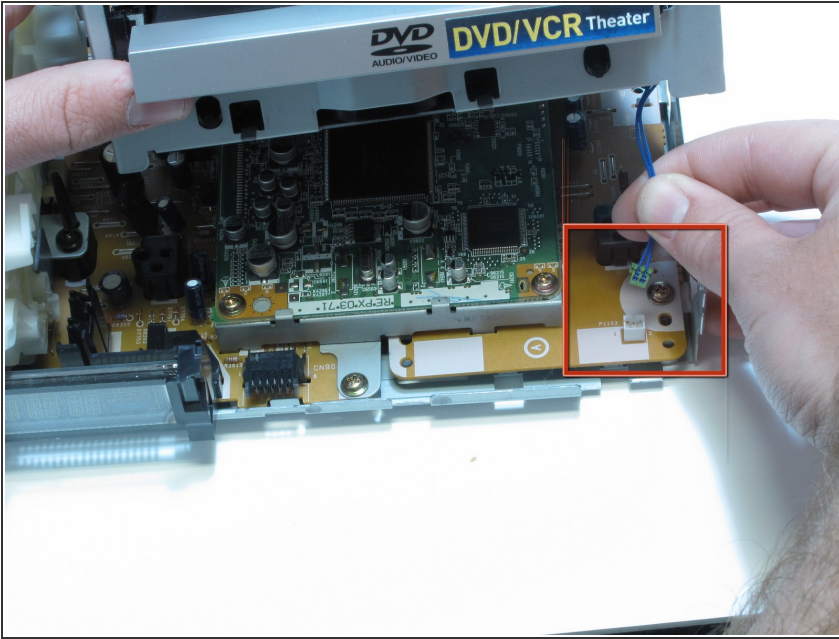
⚠ The front is attached to the device with cables so be careful when removing.

Step 6



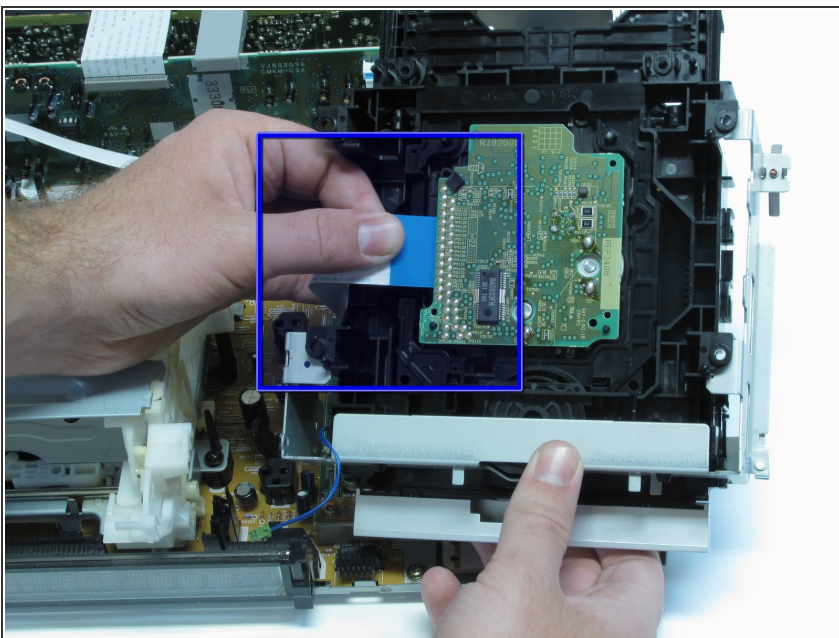
- Remove the four screws around the DVD drive with a phillips head screwdriver.

Step 7



- The DVD player is attached to the power supply.
- Remove the wire attaching it by firmly pulling on the wire until it releases.

Step 8



- Flip the DVD drive so that the bottom is facing you.
- Pull on the blue ribbon cable until it releases.
- To place the new DVD drive in just follow these steps in reverse.

To reassemble your device, follow these instructions in reverse order.