



Nikon D3200 Motherboard Replacement

If your camera is not turning on and you have...

Written By: Jose Ramirez



INTRODUCTION

If your camera is not turning on and you have tried a replacement battery, you might need to replace the motherboard. This guide will show you how to replace it.

TOOLS:

[iFixit Opening Tool](#) (1)

[Phillips #00 Screwdriver](#) (1)

Step 1 — Battery



- Locate the battery compartment on the bottom of the camera directly below the mode dial.

Step 2



- Find the marked arrow on the battery compartment door and firmly push following the arrow's direction to release the latch.

Step 3



- Release the latch and allow it to completely open.
- Insert the battery by following the diagram on the inside of the compartment door.
- Close the compartment door and firmly press on the latch until you hear a clicking sound.

Step 4 — Motherboard



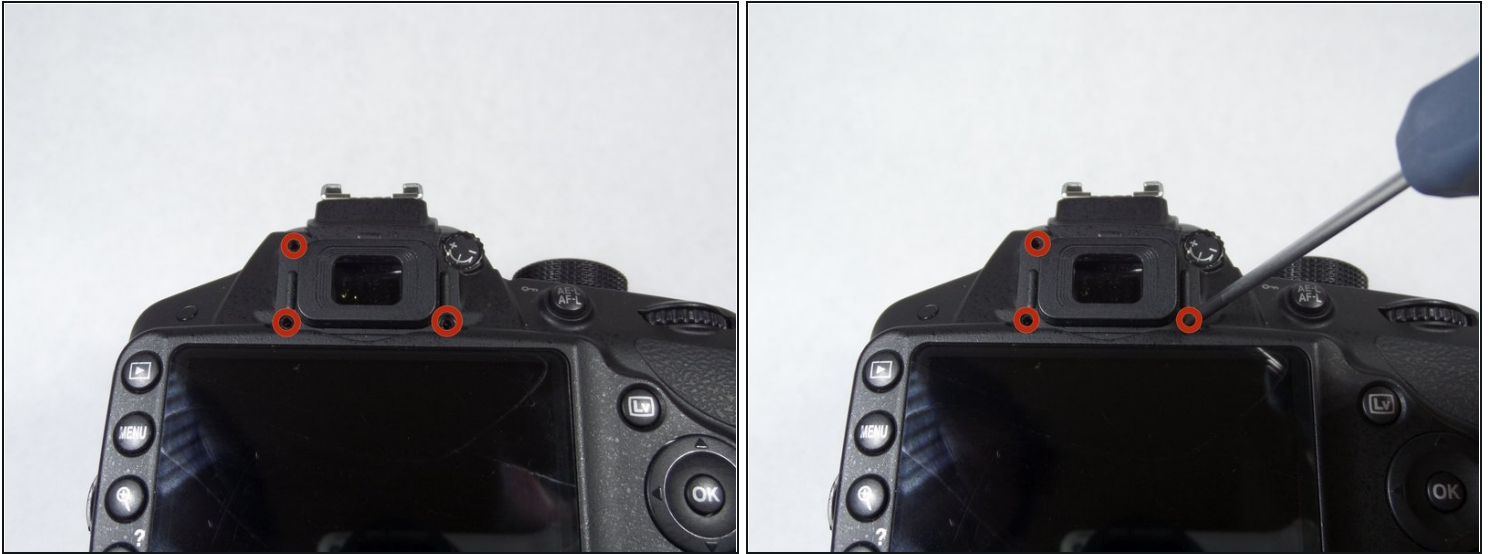
- Turn the camera so the bottom faces you.
- Locate the 6 screws and using the Phillips #00 screwdriver, remove them.
- ⚠ Don't apply a lot of pressure, the screws can strip.

Step 5



- Locate the rubber grip directly below the shutter-release button.
- Lift the rubber grip using a plastic opening tool to locate and remove the two screws underneath.

Step 6



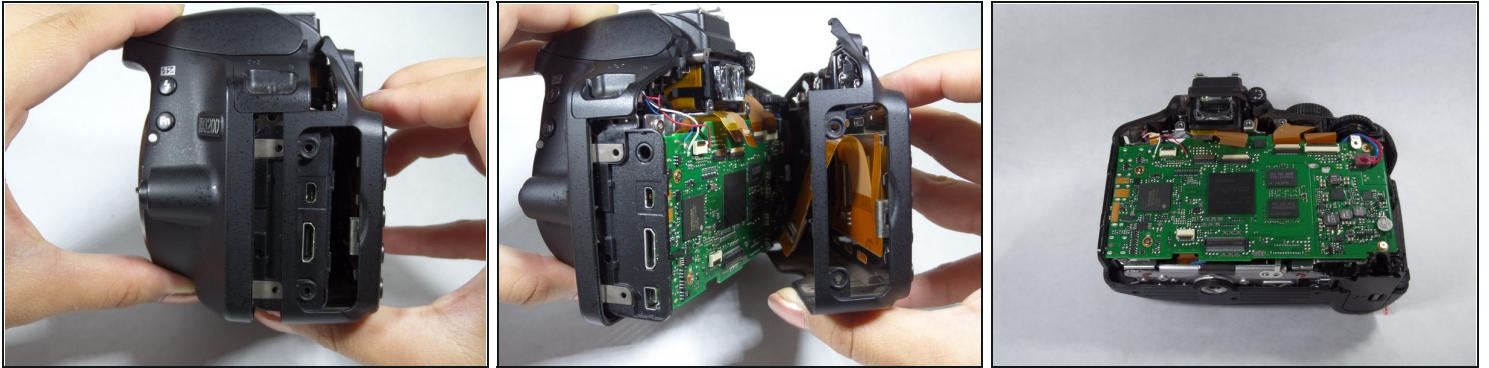
- Locate and remove the 4 screws near the eye piece above the LCD screen. The 4th screw is hidden behind the +/- label which can be carefully taken off with a needle.

Step 7



- Locate the connector cover to the left of the LCD screen.
- Unlatch the connector cover to reveal two screws.
- Locate and remove the two screws.

Step 8



- Gently pull the back portion of the camera, starting from the left of the LCD screen, then do the same on the other side of the camera.

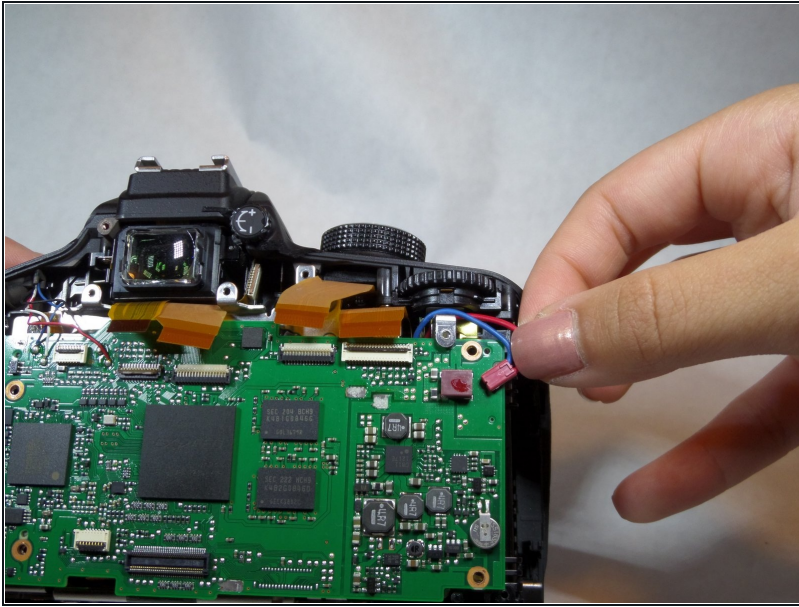
① You have now revealed the motherboard!

Step 9



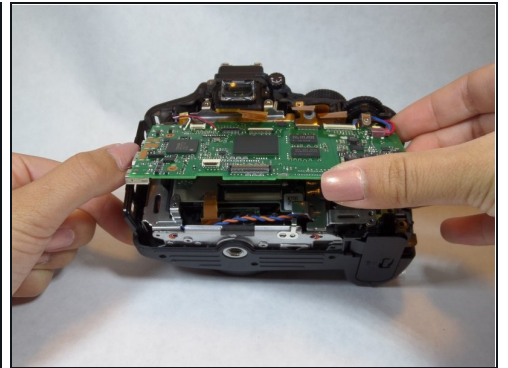
- Carefully flip the 5 brown plastic connectors using the plastic opening tool.

Step 10



- Unlatch the red and blue connecting cable from its connecting base.

Step 11



- Locate and remove the 4 screws on the motherboard.
- Place a finger under the motherboard to gently lift it.
 - ① You can also use the plastic opening tool.
- Carefully lift the motherboard from the camera and you're set!

To reassemble your device, follow these instructions in reverse order. note, there are two metal interference protectors over the board that have to be un soldered as well as the 4 wires shown to the left top of the board that have to be un soldered and re soldered to the new board