



Blu Studio HD 6.0 Midframe Replacement

This guide is for removing the Blu Studio's battery panel.

Written By: Erik reinbolt



INTRODUCTION

In this guide you'll be opening the battery housing of your Blu Studio, this is the second step you'll take whenever you replace or add internal parts (excluding the SIMs and SD cards).

Either fingernails or plastic prying tools can be used for lifting once all the screws have been removed.



TOOLS:

- [Phillips #00 Screwdriver](#) (1)
 - [iFixit Opening Tools](#) (1)
-

Step 1 — Rear Case



- Begin by making sure your Blu Studio is turned off.

Step 2 — Back Panel.



- To begin the removal of your back panel, first locate the lift tab on the bottom-right corner.

Step 3



- Next, gently slide your thumb (or plastic tool if you prefer) down the seam running the length of your Blu Studio until the rear panel is completely removed.
- Your rear panel should be placed nearby and in a safe location until you are finished with your task.

Step 4 — Midframe



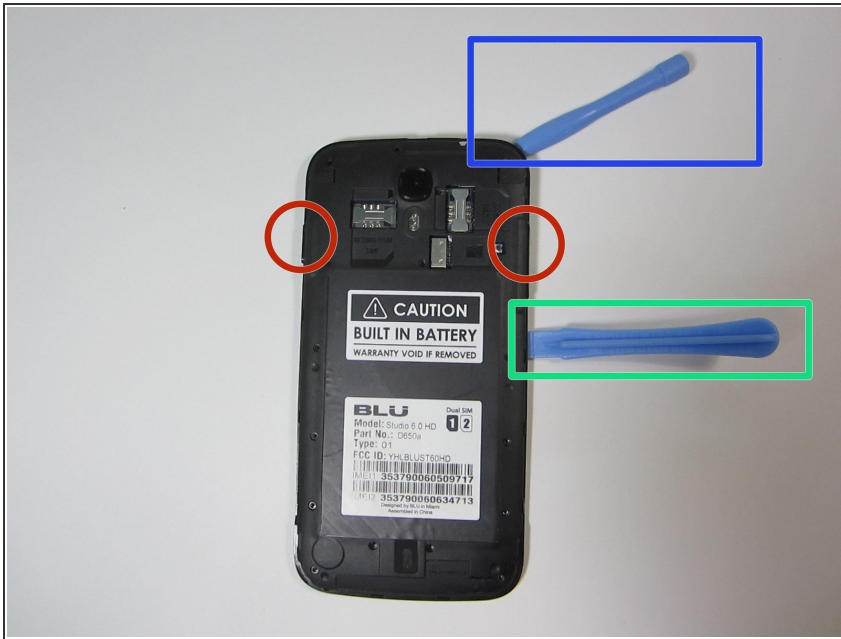
- With your back panel already removed from the previous guide you'll need to acquire a Philips head screw driver size (PH00)

Step 5



- Next proceed to remove all 16 screws (2.5mm in length), all screws are the same size so getting them mixed up will not be an issue later on.
- One of the lower right hand screws will be hidden under a sticker.

Step 6



- After removing all 16 screws you can begin the process of removing the battery housing panel.
- You will need to use the thinner plastic prying tool to slowly outline the seam of the case starting from the top (near the camera).
- Try to be careful around the side buttons as the plastic is weakest there.
- After the top half of the case has been opened insert the thicker prying tool to keep the case open. This will help as the battery and battery housing have a suction cup like action that keeps them from separating.

Step 7



- At this point your battery, motherboard, rear camera, and front camera should all be readily available for fixing. Happy fixing.

To reassemble your device, follow these instructions in reverse order.