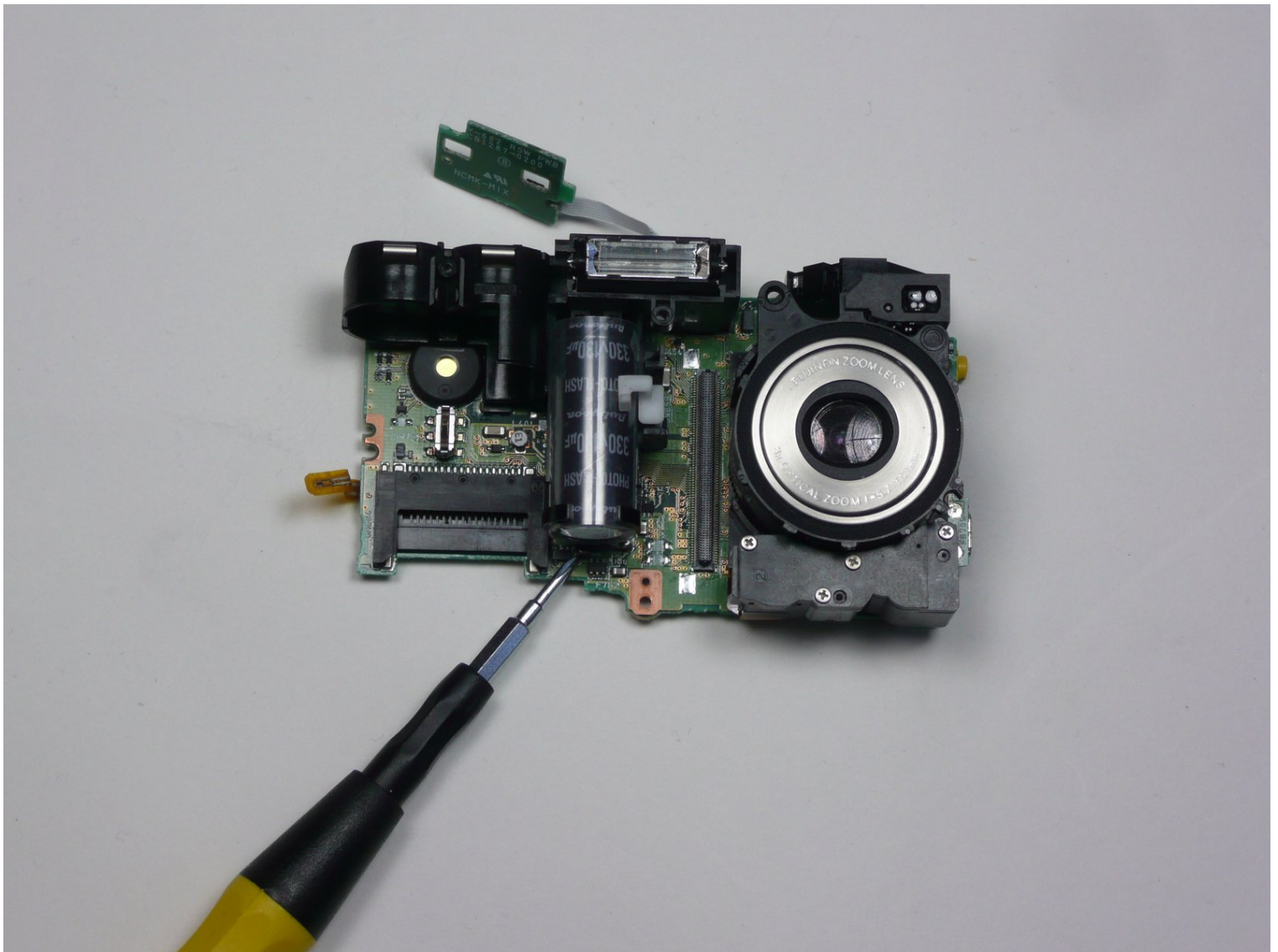




FujiFilm FinePix A340 Flash Unit Replacement

Written By: Cody



TOOLS:


Tri-point Y0 Screwdriver (1)

Phillips #0 Screwdriver (1)

Spudger (1)

Step 1 — Outer Case



 To prevent the danger of electric shock, remove the batteries before continuing to the next steps.

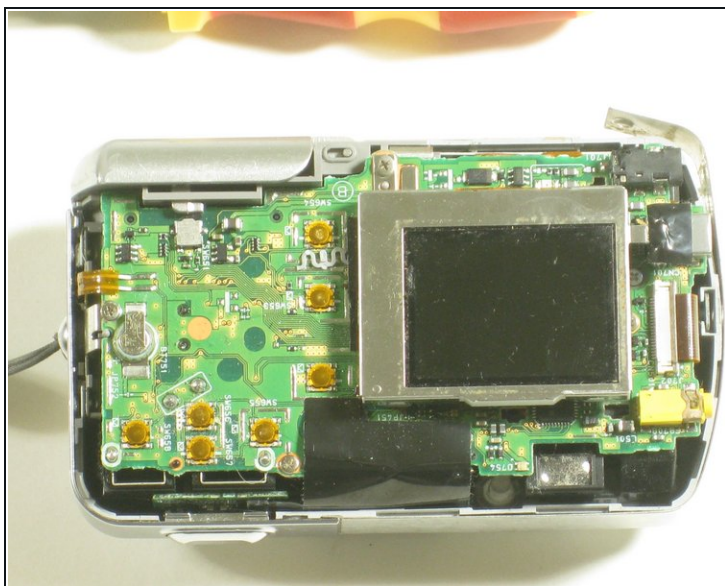
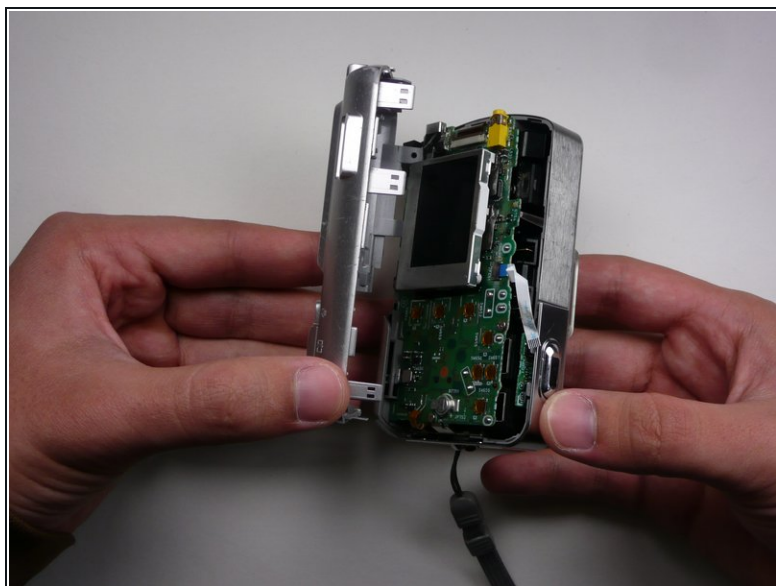
- Slide the battery cover to the side to release the batteries.

Step 2



- Remove five screws from the camera casing using a tri-point Y0 screwdriver.

Step 3



- Grab the case with your hands and slowly pull back the outer casing.

Step 4 — LCD Screen



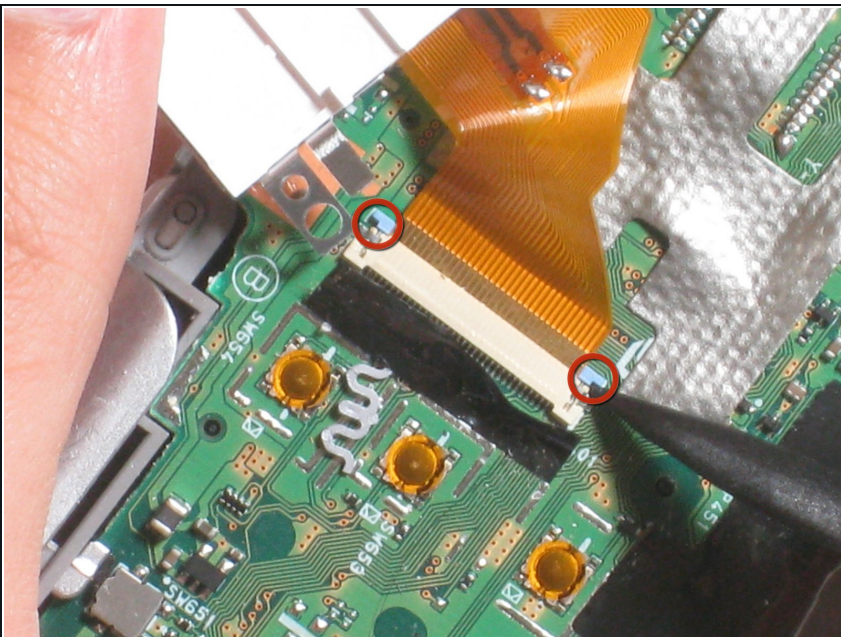
- Locate the LCD screen and anchoring screw.
- Remove screw.

Step 5



- Carefully pull the LCD screen away from the board it is connected to.

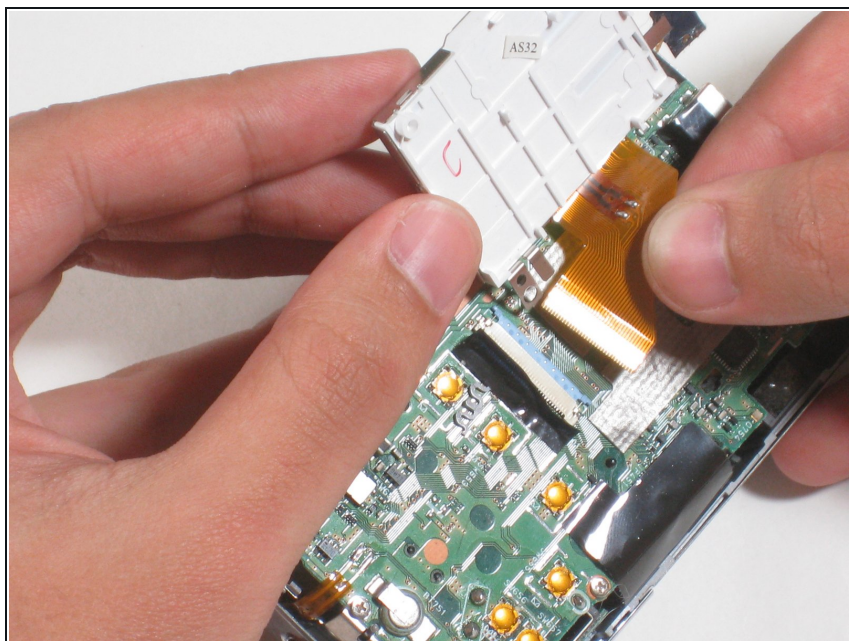
Step 6



- Push both blue switches away from the holding device to unlash lcd ribbon.

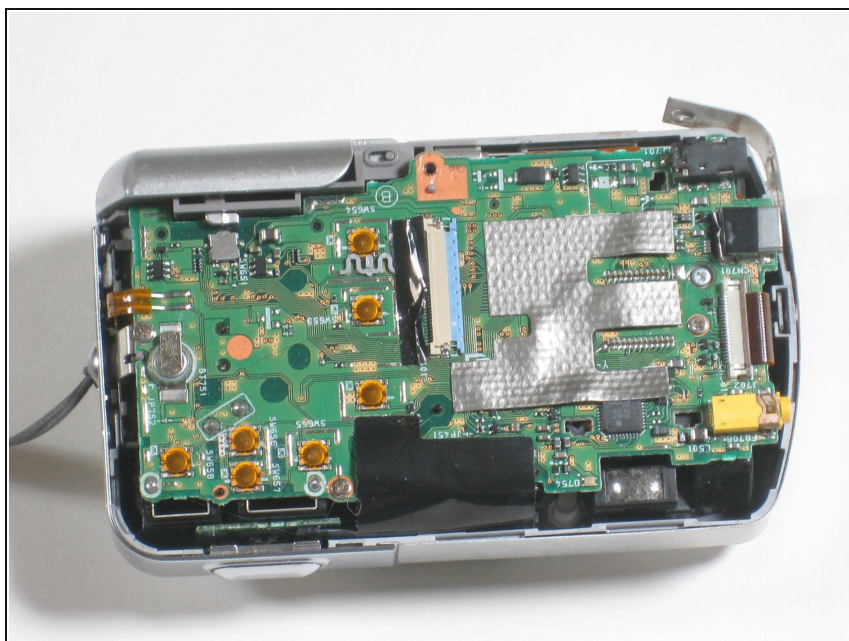
⚠ Be careful when removing ribbon. If you damage it, you will need to replace it as well.

Step 7



- Carefully detach the ribbon from where it was connected by the blue pins.

Step 8



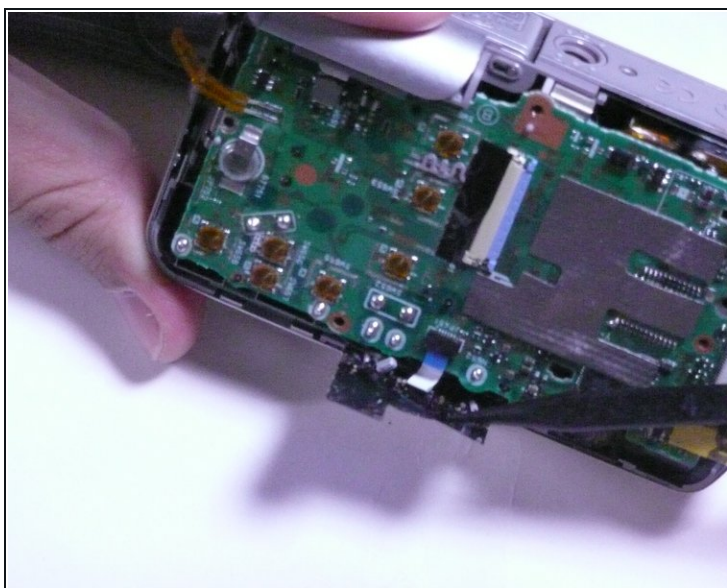
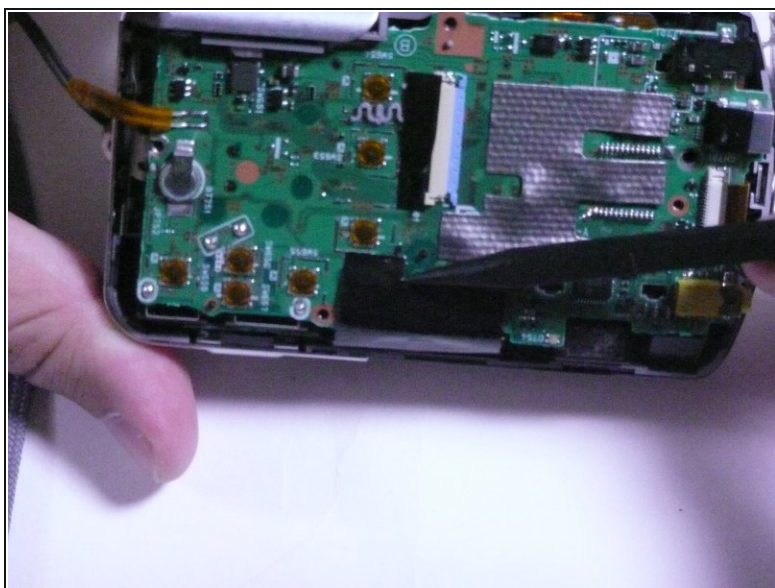
- Now that everything has been disconnected from the board, remove LCD screen.

Step 9 — Motherboard



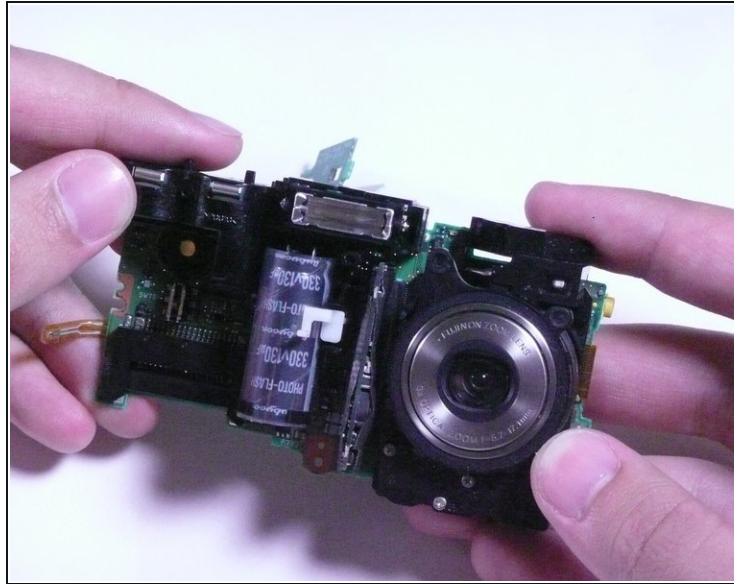
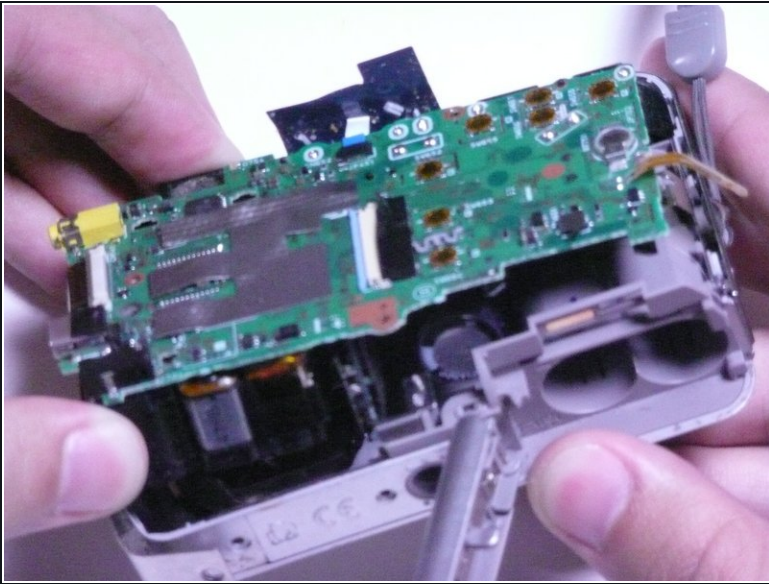
- Remove the two screws holding the circuit board down.

Step 10



- Remove black sticky tape from circuit board and camera case.

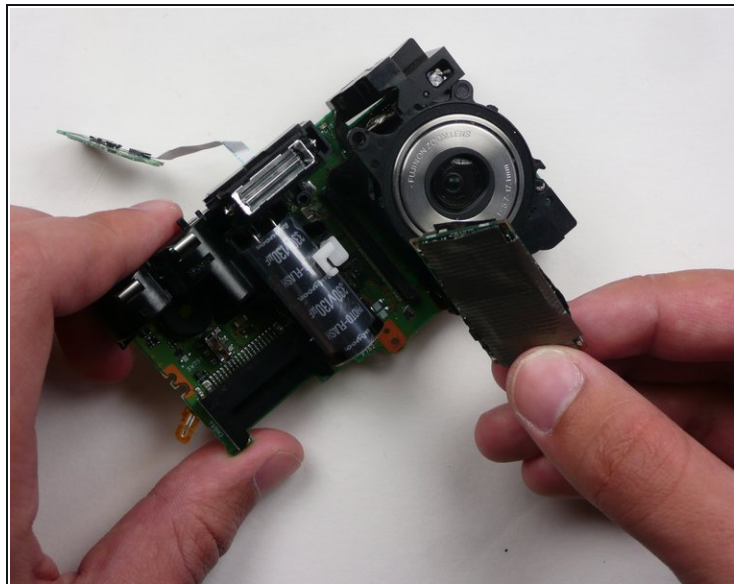
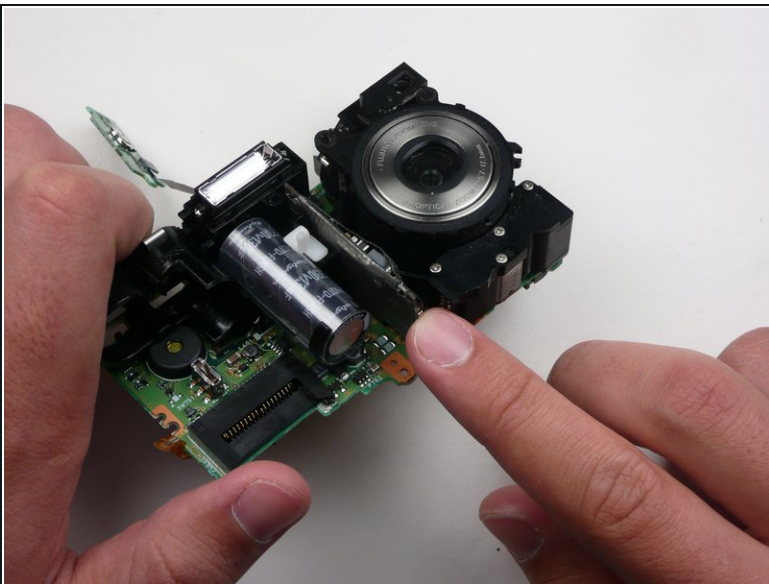
Step 11



- Gently pull the circuit board away from the front side of the camera.

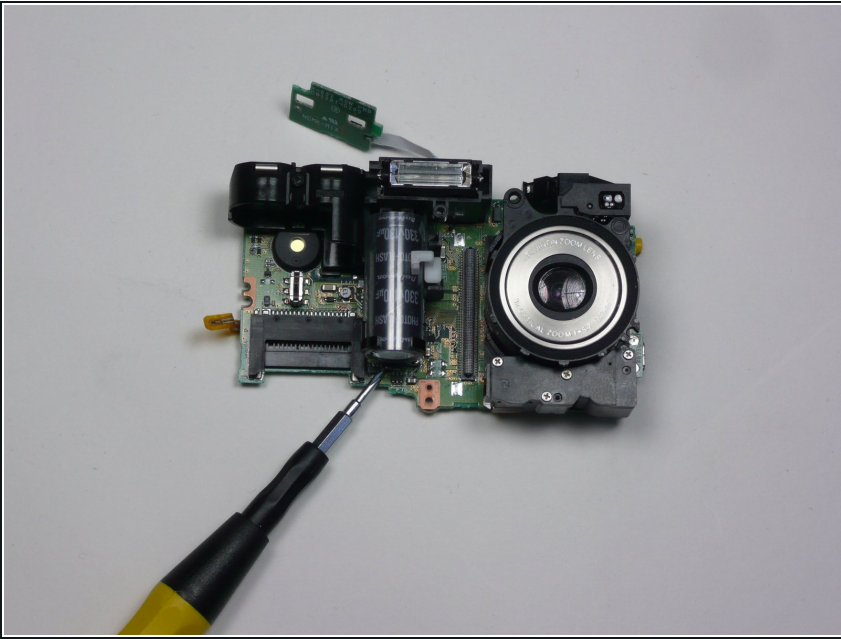
⚠ Be careful when removing assembly as to not break any solder leads or damage lens assembly.

Step 12



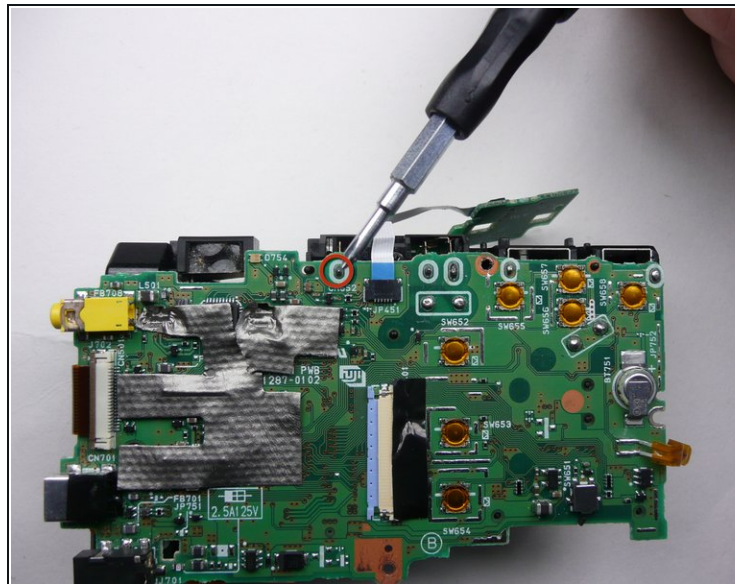
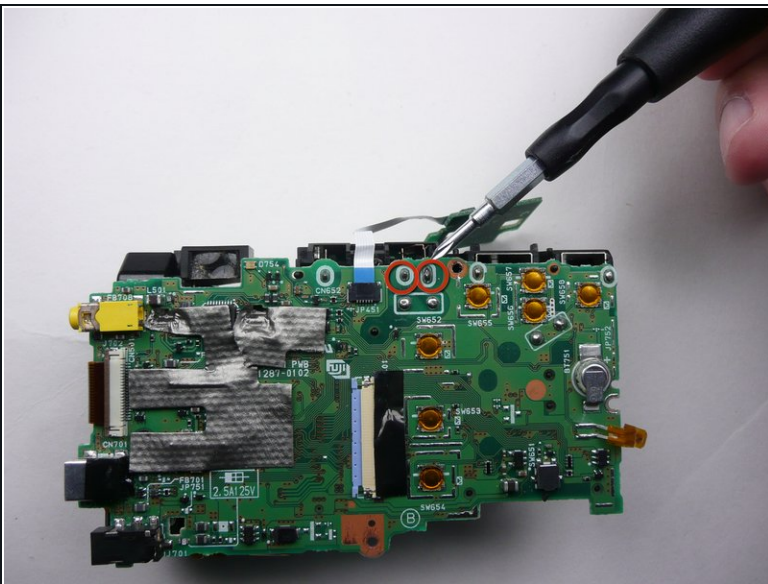
- Remove the logic board by pulling straight away from assembly.

Step 13 — Flash Unit



- Locate the flash unit of the camera. It includes the camera's flash and a capacitor.

Step 14



- Unsolder the flash unit at its three points.

⚠ Be careful not to damage the circuit board or surrounding parts with the solder iron.

To reassemble your device, follow these instructions in reverse order.

