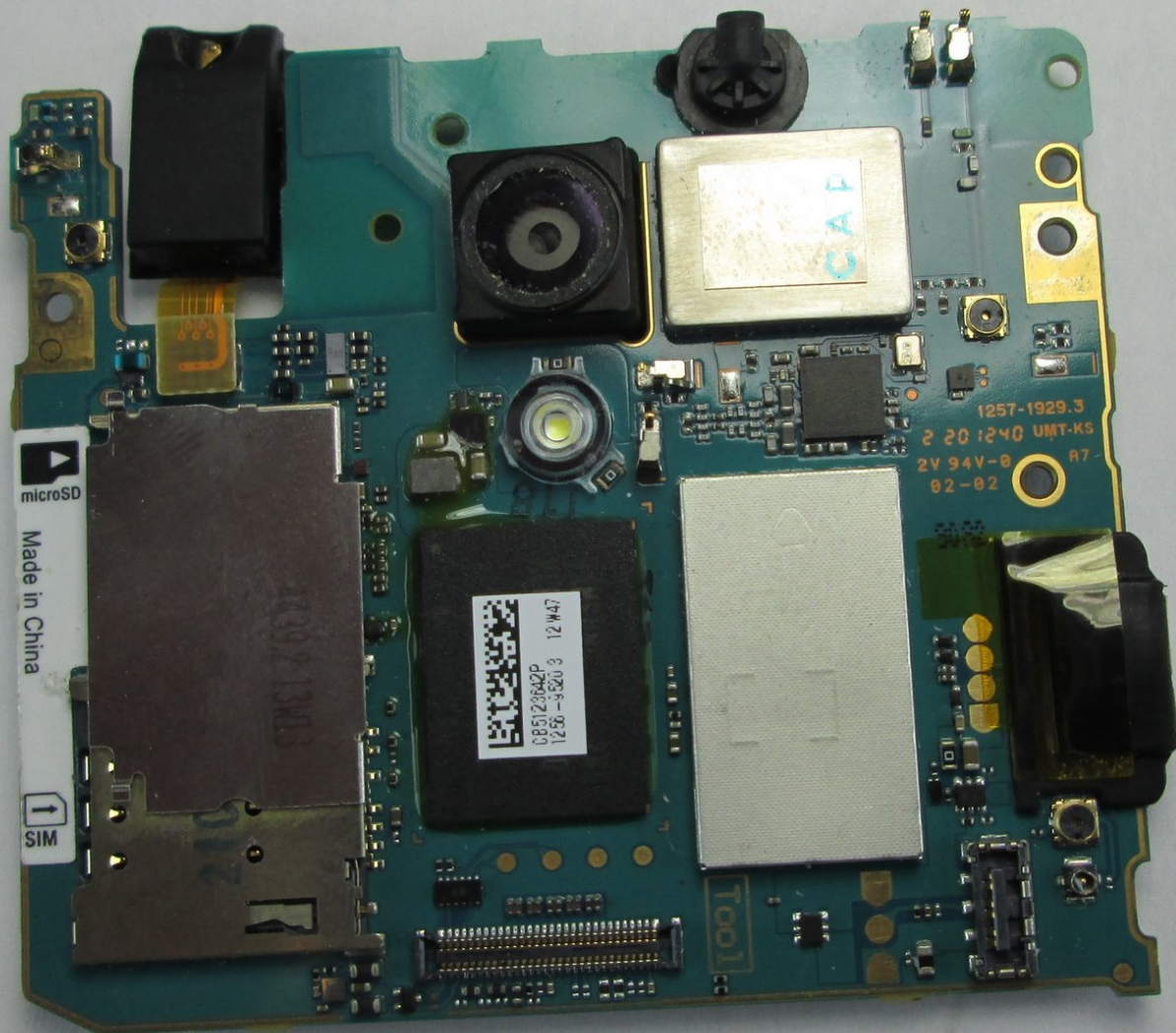




Sony Xperia TL Camera Replacement

Your camera is attached to the motherboard it snaps on and off. It is an easy component to replace.

Written By: Adam Giniger



INTRODUCTION

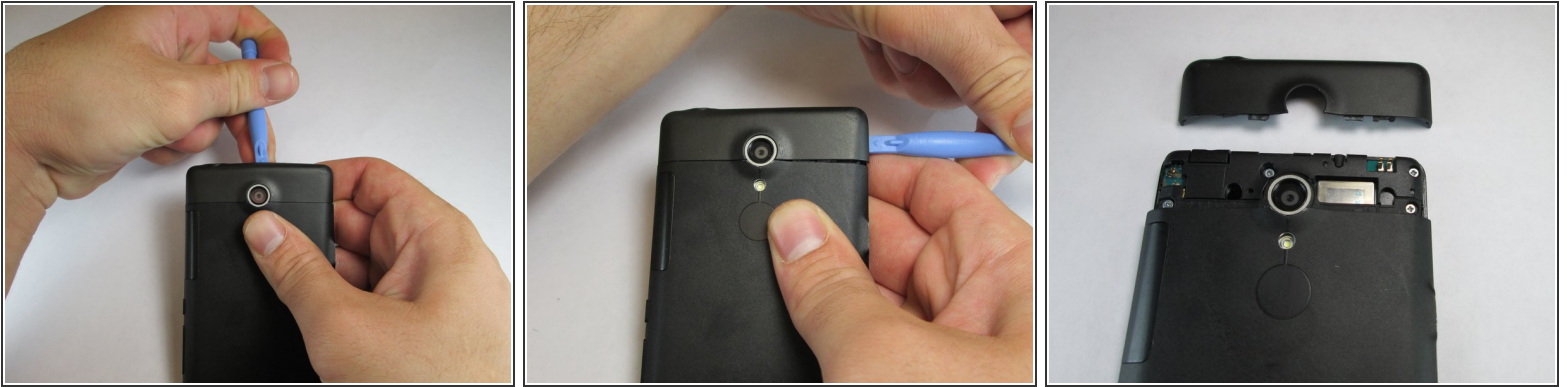
I will teach you how to reach the camera and replace it.



TOOLS:

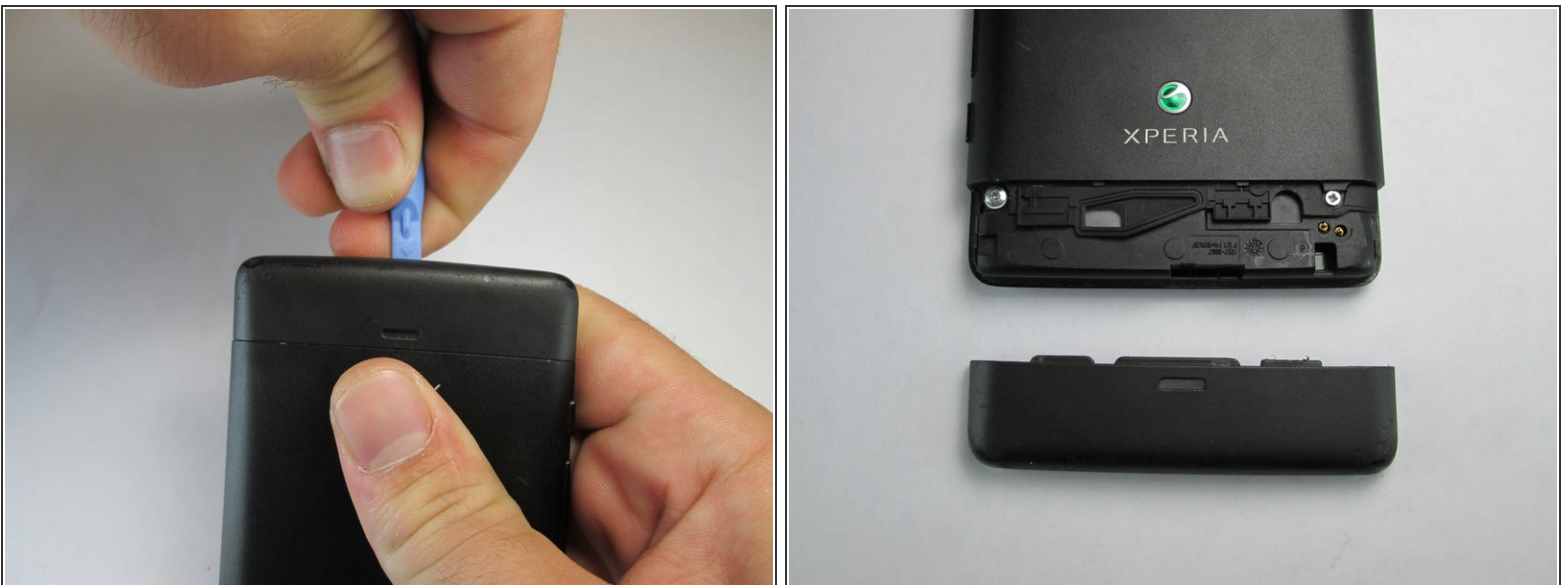
- [Phillips #00 Screwdriver](#) (1)
 - [iFixit Opening Tools](#) (1)
-

Step 1 — Remove Top Plastic Section



- Use the plastic opening tool to pry the top plastic section off.

Step 2 — Remove Bottom Plastic Section



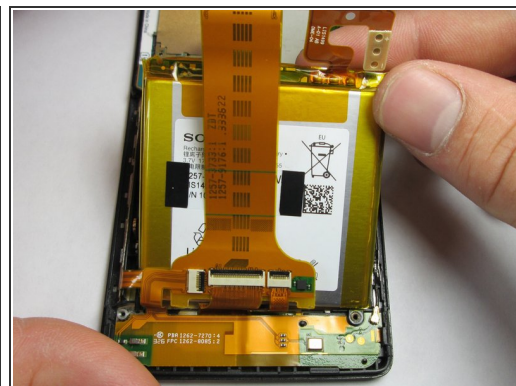
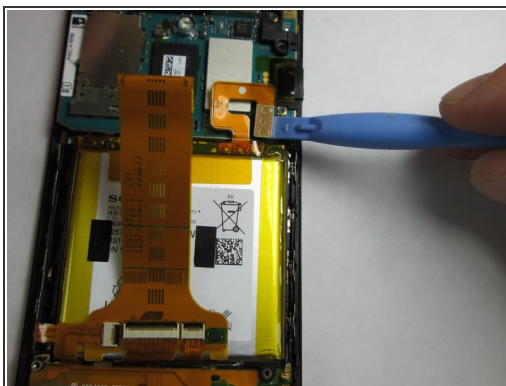
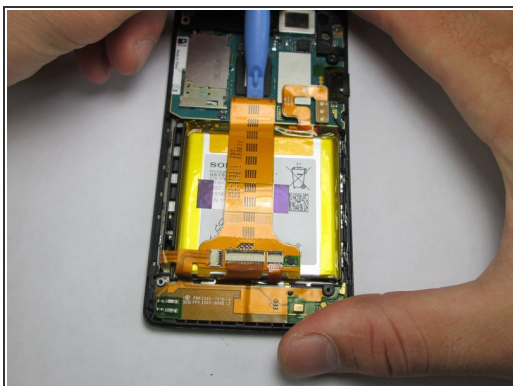
- Use the plastic opening tool to pry the bottom plastic section off.

Step 3 — Unscrewing the Back Off



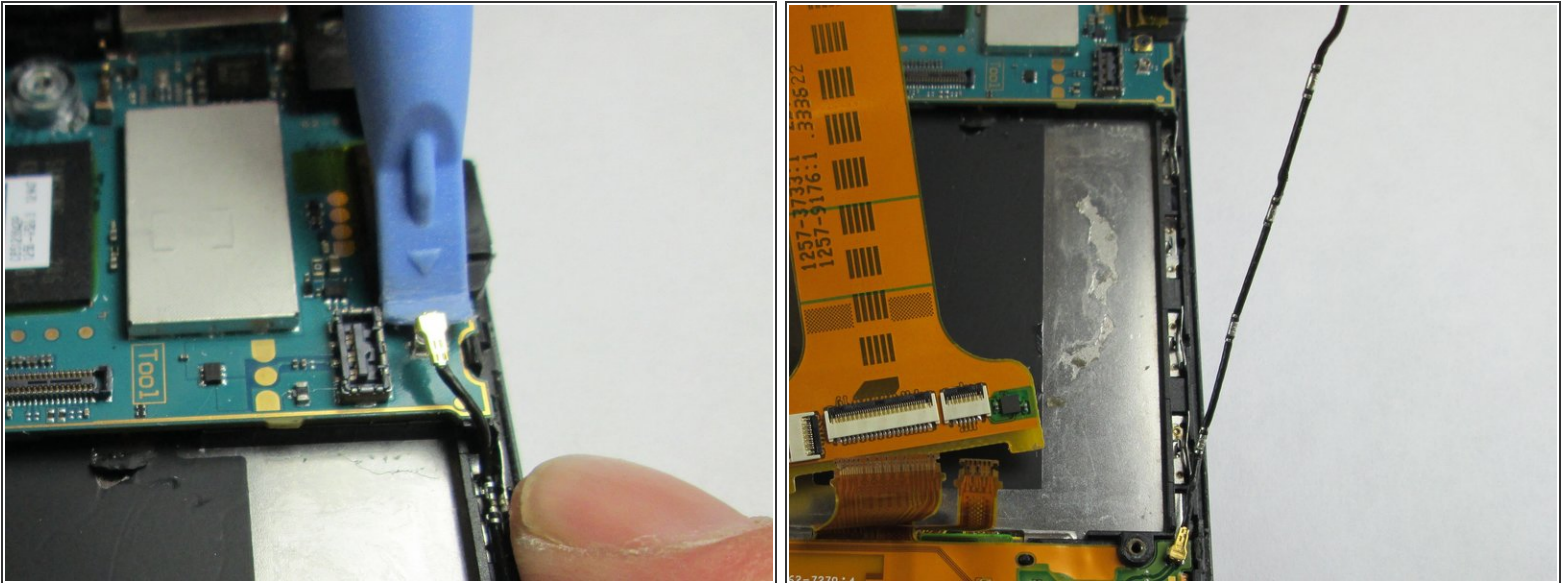
- Remove the four 5mm screws.
- Use the plastic opening tool to pry off the back.

Step 4 — Battery



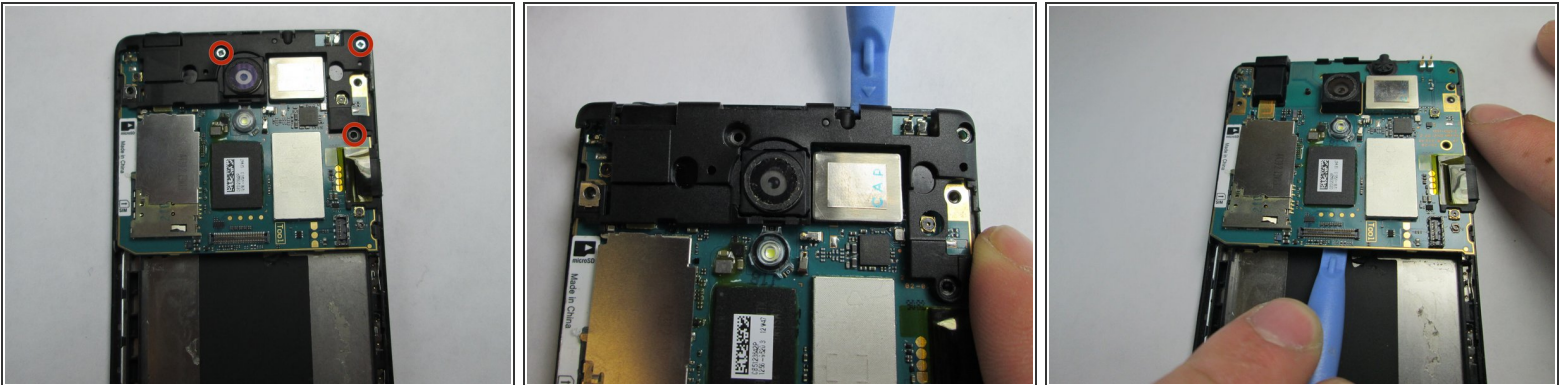
- Use the plastic opening tool to detach the ribbon running across the battery.
- Use the plastic opening tool to detach the ribbon connecting the battery to the motherboard.

Step 5 — Sony Xperia TL Auxiliary Cord Replacement



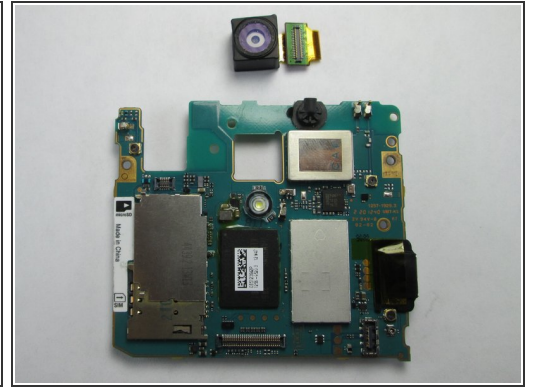
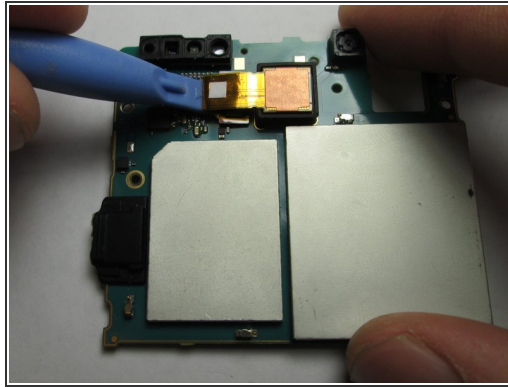
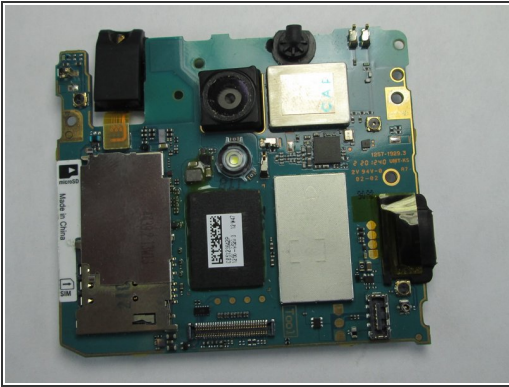
- Use the plastic opening tool to unlatch the cord's ends off the motherboard and loud speaker module. The cord can be located on the right side of the phone.

Step 6 — Motherboard




- Use the Phillips #00 to remove the 3 5mm screws.
- Lift the plastic cover off.
- Use the plastic opening tool to pry the motherboard out of the phone shell.

Step 7 — Camera



- **'Use the plastic opening tool to detach the camera from the motherboard.'**

 The camera attachment is on the back of the motherboard.

To reassemble your device, follow these instructions in reverse order.