



Sony Xperia TL Back Panel Replacement

This guide shows how to remove the back panel of the phone.

Written By: Nathan Laneau



INTRODUCTION

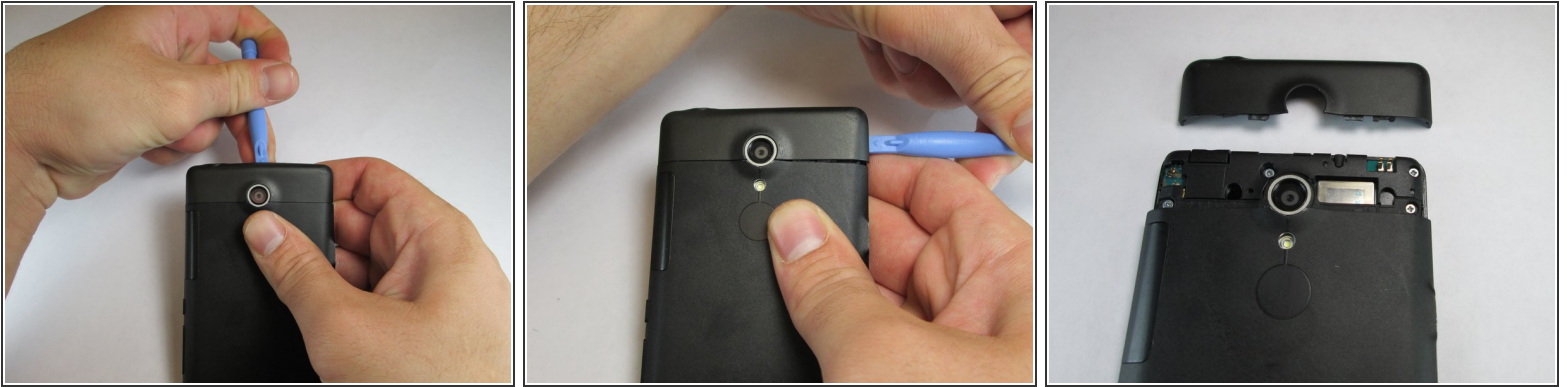
Removing the back panel of the phone is required to access any internal components.



TOOLS:

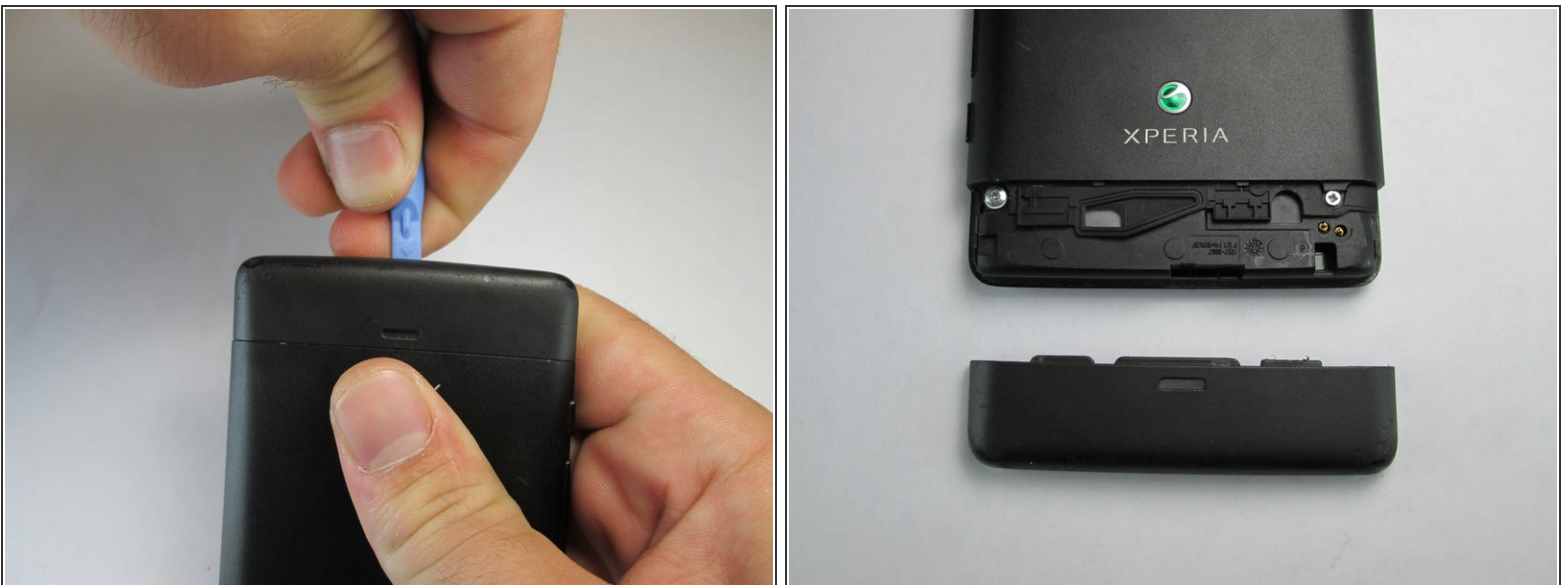
- [iFixit Opening Tools](#) (1)
 - [Phillips #00 Screwdriver](#) (1)
-

Step 1 — Remove Top Plastic Section



- Use the plastic opening tool to pry the top plastic section off.

Step 2 — Remove Bottom Plastic Section



- Use the plastic opening tool to pry the bottom plastic section off.

Step 3 — Unscrewing the Back Off



- Remove the four 5mm screws.
- Use the plastic opening tool to pry off the back.

To reassemble your device, follow these instructions in reverse order.