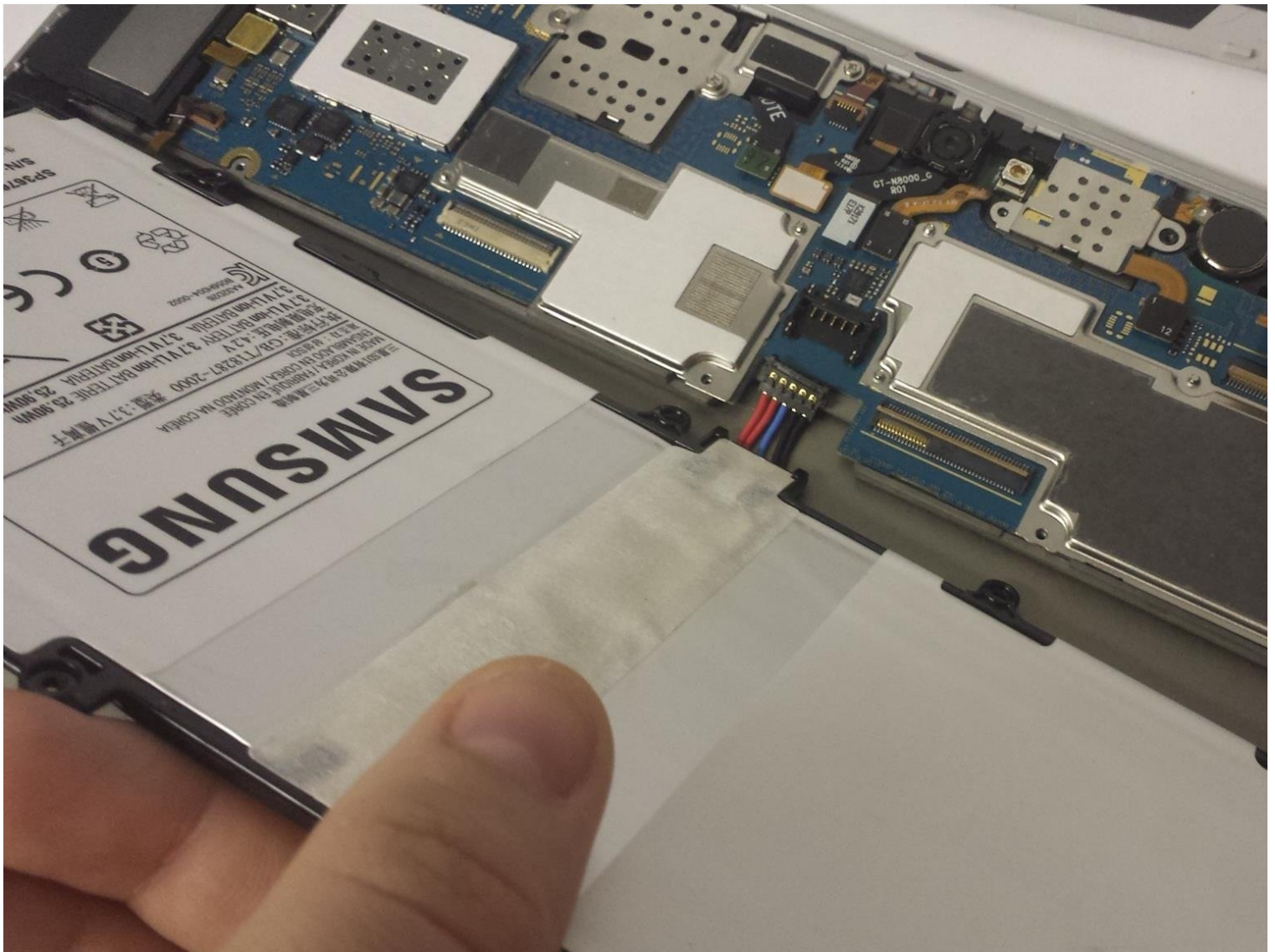




Samsung Galaxy Note 10.1 Battery Replacement

The Samsung Galaxy Note 10.1 is a popular...

Written By: Tyler Salomone



INTRODUCTION

The Samsung Galaxy Note 10.1 is a popular tablet that provides a wide range of features and functions for its users. However, after prolonged use, the device's battery may begin to deteriorate, leading to decreased battery life and other issues. If you find that your Galaxy Note 10.1 isn't holding a charge as long as it used to or is experiencing other battery-related problems, a battery replacement may be necessary to restore your tablet's performance. Replacing the battery in a Galaxy Note 10.1 can solve a range of issues, including charging problems and general battery health concerns. While the process of replacing the battery does not require any special soldering skills, it does require some technical expertise and care to avoid damaging the device during the repair.

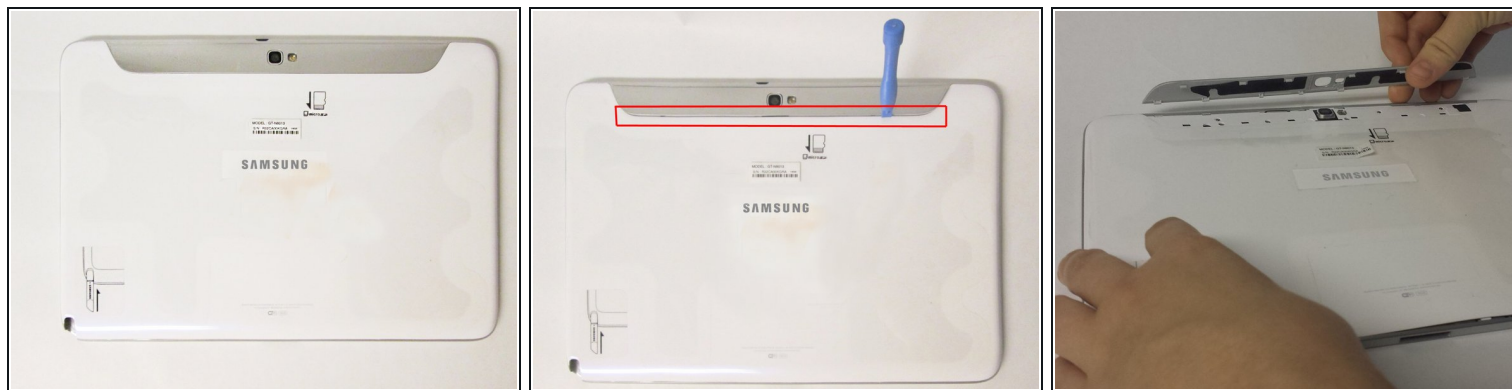
TOOLS:

[iFixit Opening Tool](#) (1)
[Phillips #00 Screwdriver](#) (1)

PARTS:

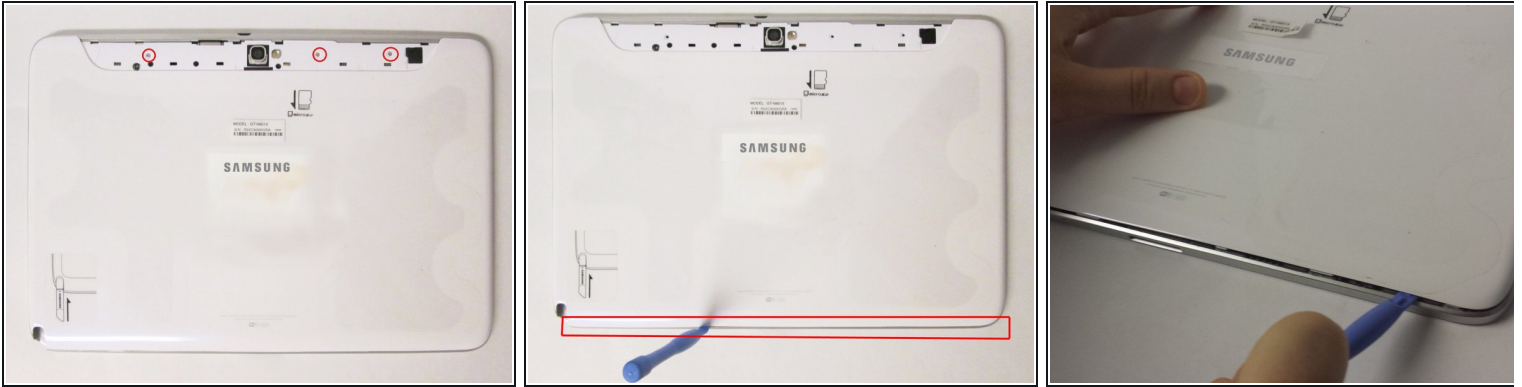
[Galaxy Note 10.1 \(2012\) Rear Panel](#) (1)
[Galaxy Note 10.1 \(2012\) Battery](#) (1)

Step 1 — Removing the Top Piece



- This is the back of the device and where you will begin to take it apart
- It is necessary to remove this piece first before removing the bigger back piece.
- Use the plastic opening tools to pry along the indicated box.
- Lift up the silver piece to reveal the rest of the back cover.

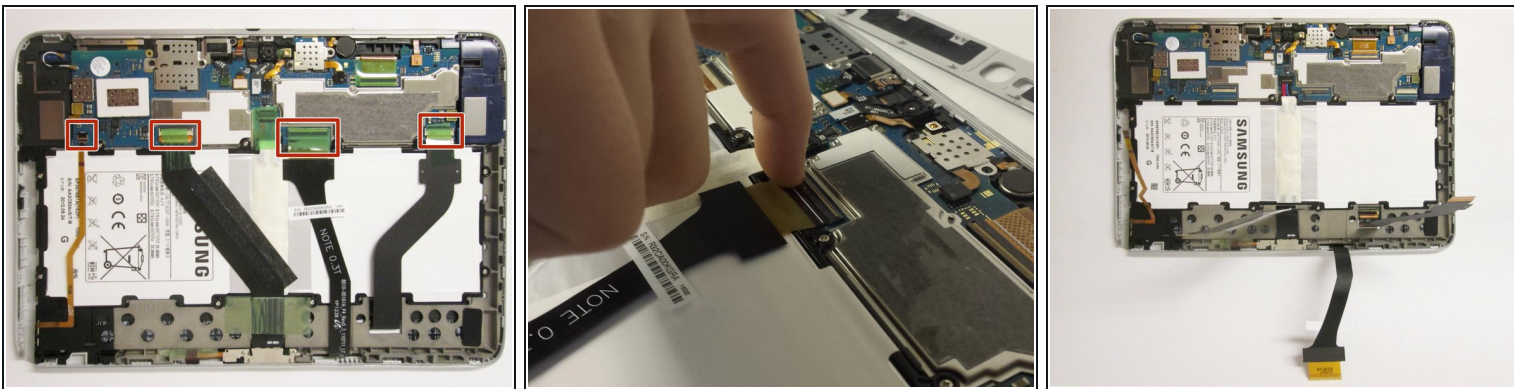
Step 2 — Removing the Back Cover



- Unscrew the three 5 mm screws indicated by the red circles with the Philips #00 screwdriver.
- Using the plastic opening tools pry along the bottom of the device, moving to the sides of the cover to the top.
- Remove the back cover.

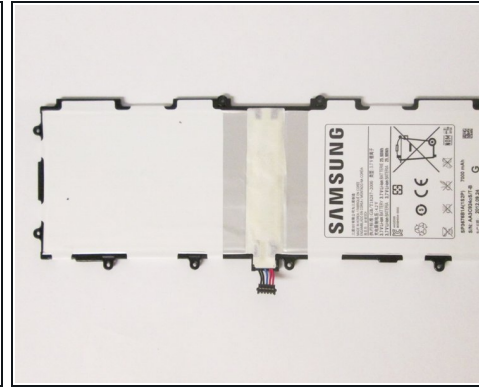
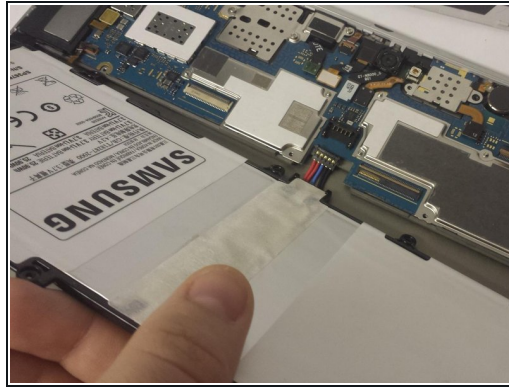
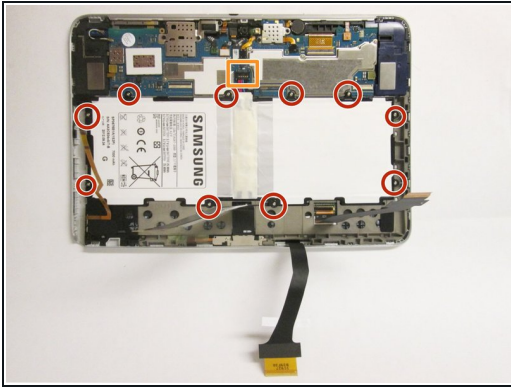
⚠ At this point use anti-static gloves or do **NOT** take it apart on carpet.

Step 3 — Removing components covering battery



- Carefully remove all of the ribbons that connect over the battery.

Step 4 — Removing the Battery



- Remove all of the 3 mm screws indicated by a red circle with the #00 Philips Screwdriver.
- Disconnect the battery connector from the motherboard.
- Now you may remove the battery. The replacement battery should be 3.7 Volts and 25.9 kWh.

To reassemble your device, follow these instructions in reverse order.