



# LG Optimus 3D Motherboard Replacement

This guide will show you how to replace the motherboard in your LG Optimus 3D smartphone.

Written By: Dale Pearson



---

## INTRODUCTION

The motherboard is the main internal communication component that brings all the various inputs together.

---

### TOOLS:

- [Heat Gun](#) (1)
  - [Phillips #00 Screwdriver](#) (1)
  - [Spudger](#) (1)
  - [iFixit Opening Tools](#) (1)
-

## Step 1 — Back Cover Removal



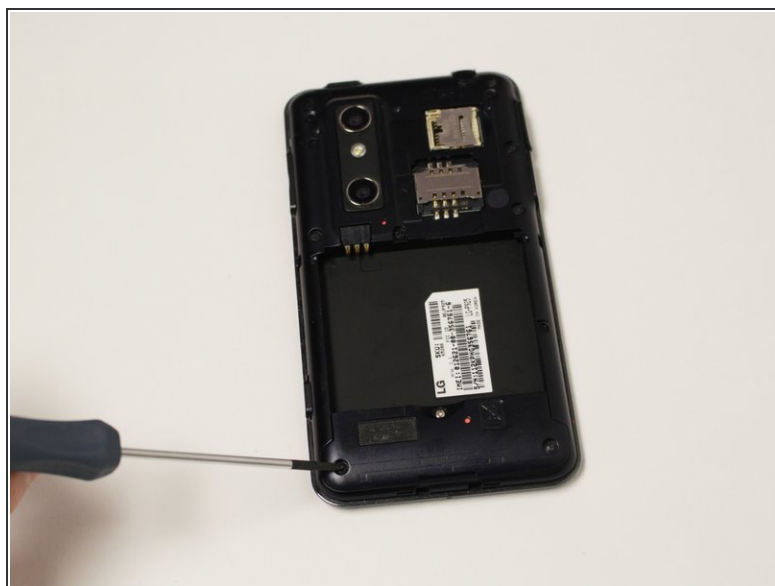
- Pry the back cover off of the phone with your fingernail. There is a notch located at the bottom of the phone for improved leverage.

## Step 2 — Battery Removal



- The battery is the large black rectangle towards the bottom half of the phone.
- There is a semi-circular notch at the bottom edge of the battery. Press against and up on the battery to pop it out.

## Step 3 — Screw Removal



- Remove 9 screws from the phone. The locations of these screws are circled in the picture.
- 5.5mm length PH00 screws
- 4mm length PH00 screws

## Step 4 — Bottom Cover Removal



- Gently pull down on the bottom cover to remove it.

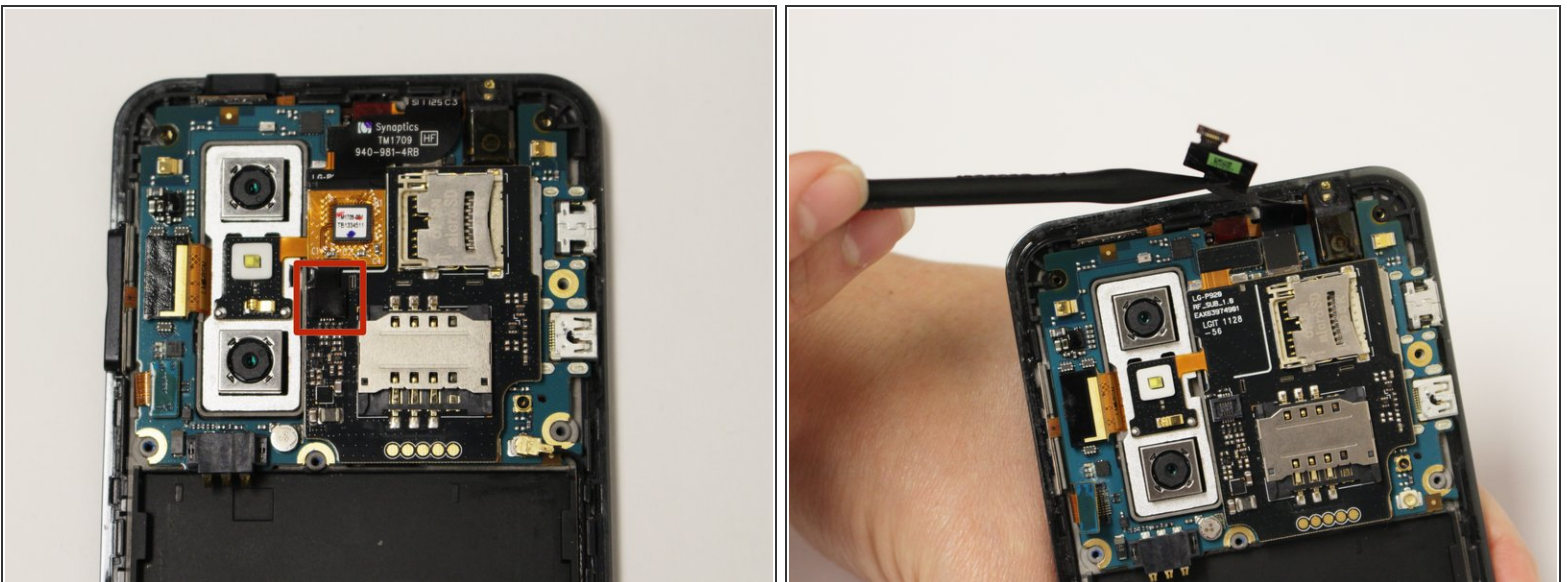


## Step 5 — Mid-Cover Bezel Removal



- Using a plastic opening tool, gently pry around the perimeter of the device.
- ⚠ The ribbons behind the buttons and ports are very delicate. Make sure you do not run your plastic opening tool too deep into the bezel, as you could damage them.
- The button covers rest under the Mid-Cover Bezel. Remove them and set aside.

## Step 6 — Ribbon Cable Disconnection



- Using a spudger or plastic opening tool, gently disconnect the ribbon cable attached to the black SIM card board.

## Step 7 — Adhesive Loosening



- Use a hair-dryer on high, or a heat-gun on low to heat the device and loosen the adhesive which holds down the SD/SIM Card Board.
  - Evenly heat the device in short intervals for about one minute.
- ⚠ Do not heat the device for more than 30 seconds at a time to prevent over-heating.

## Step 8 — SD/SIM Card Board Removal



- Gently pry the board up to release it from the now soft adhesive. Make sure you pry up the little tab connected to the camera unit as well.
- If the board is too difficult to separate than more heating may be required.

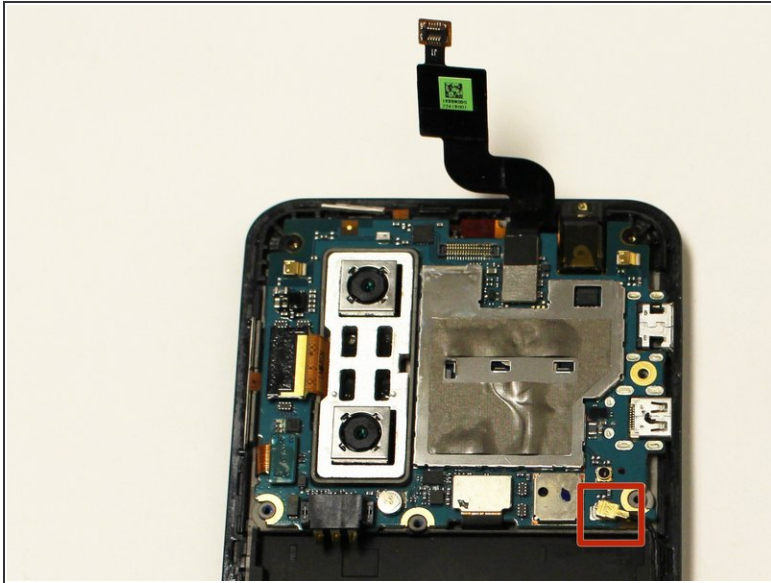
## Step 9 — Disconnect Ribbon Cables



- Using a spudger or plastic opening tool, gently lift the ribbon cables connected to the motherboard.
- The button tabs, highlighted in orange, are held in with a light adhesive. Gently lift them out of the body of the phone with a spudger.

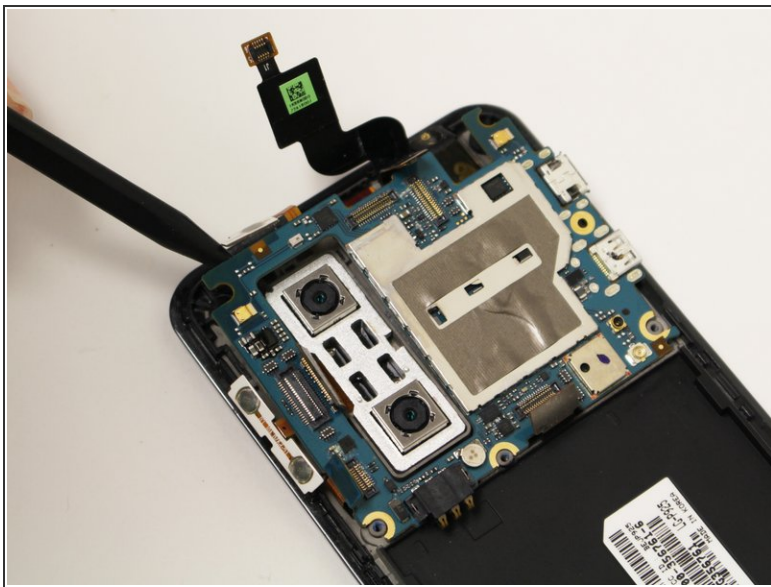


## Step 10 — Disconnect Antenna



- Remove the antenna cable by disconnecting both ends.
- One end connects to the motherboard and the other connects near bottom of the phone.

## Step 11 — Remove Motherboard



- Using a spudger gently lift the motherboard assembly out of the case.
- ⓘ Make sure the motherboard does not get snagged on the camera's ribbon cable.



To reassemble your device, follow these instructions in reverse order.