



Dell Inspiron 6000 Screen Replacement

Screen replacement for Dell Inspiron 6000.

Written By: Jacob DeWar



INTRODUCTION

Replacing the screen takes some time and effort, but requires few tools.



TOOLS:

- [Phillips #00 Screwdriver](#) (1)
 - [Spudger](#) (1)
 - [iFixit Opening Tools](#) (1)
-

Step 1 — Battery



⚠ To prevent injury, make sure the laptop is unplugged before removing the battery.

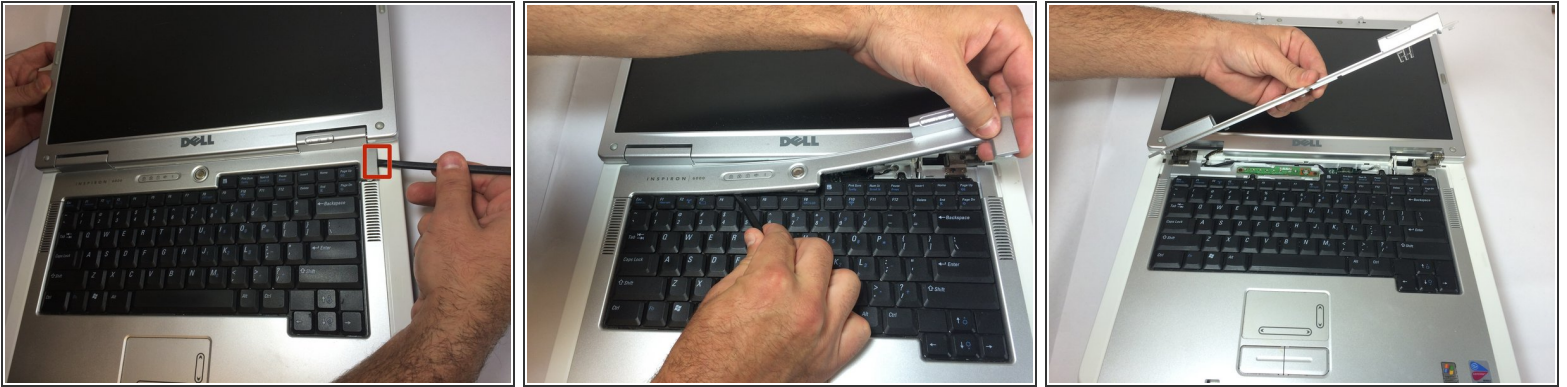
- Flip the laptop over, bottom-side up.

Step 2



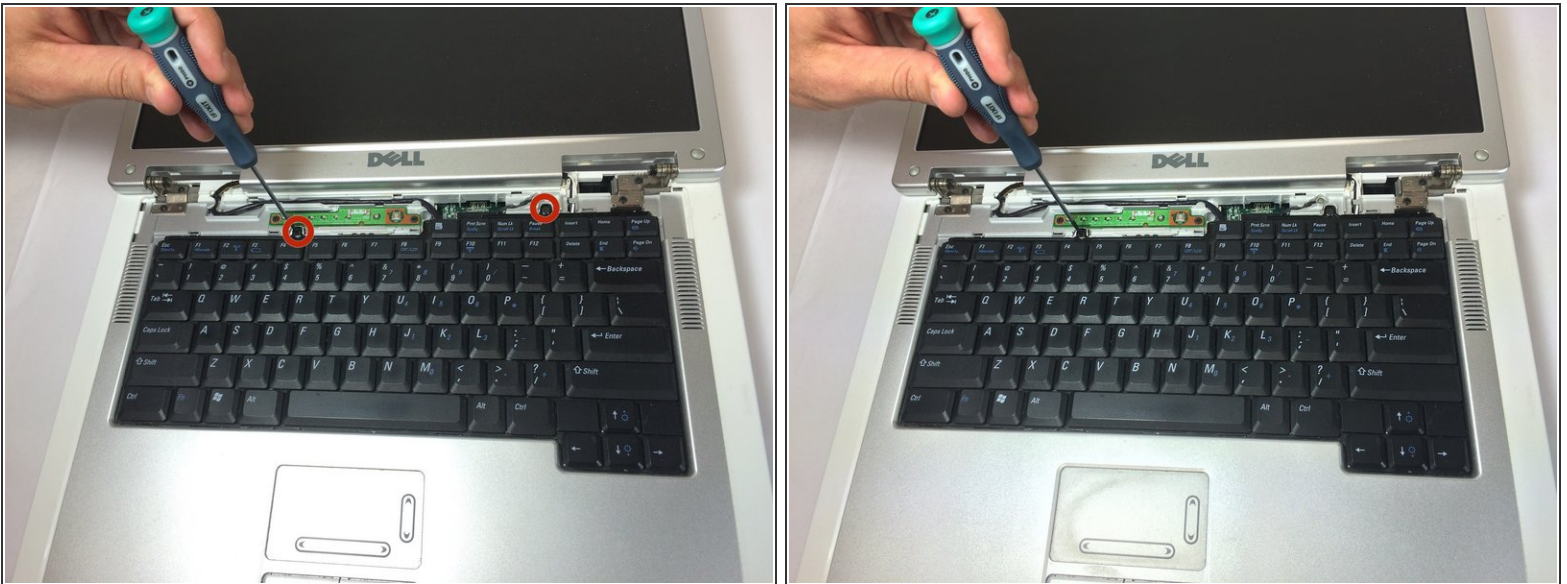
- Push the switch next to the battery.
- At the same time, lift the battery away from the laptop.

Step 3 — Keyboard



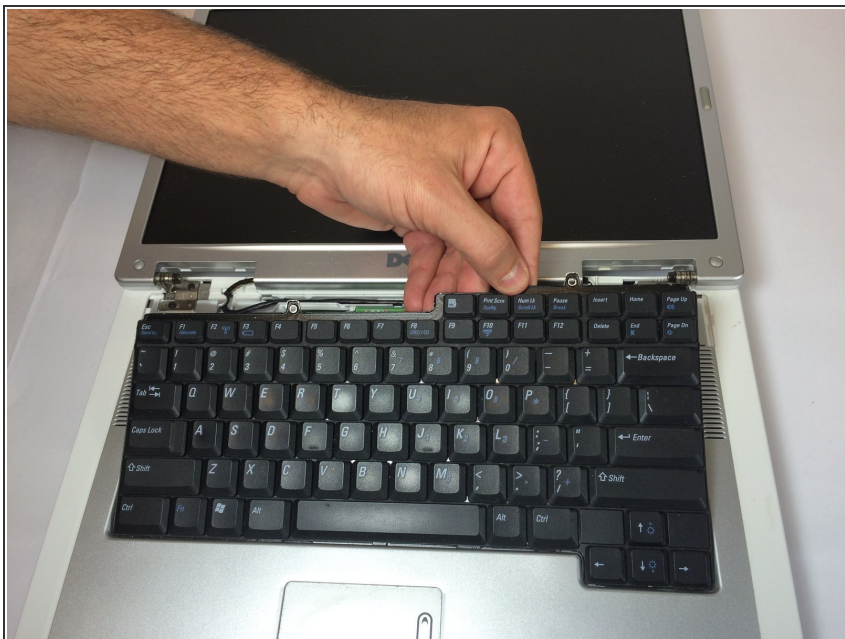
- Place the laptop on flat surface.
- Carefully open the laptop at far as it will go so that the back of screen is touching the flat surface.
- Carefully take a spudger and separate part of the cover at the red circle.

Step 4



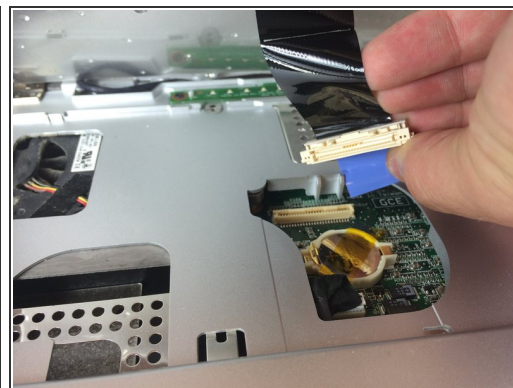
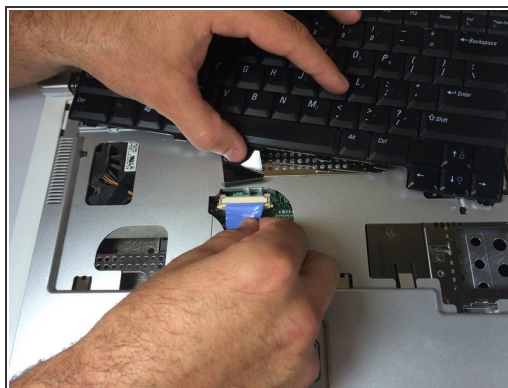
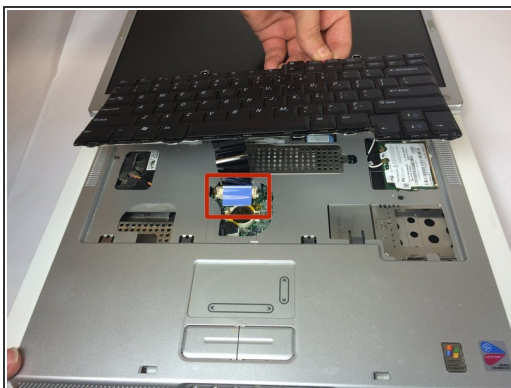
- Remove two 4 mm Philips #00 screws.

Step 5



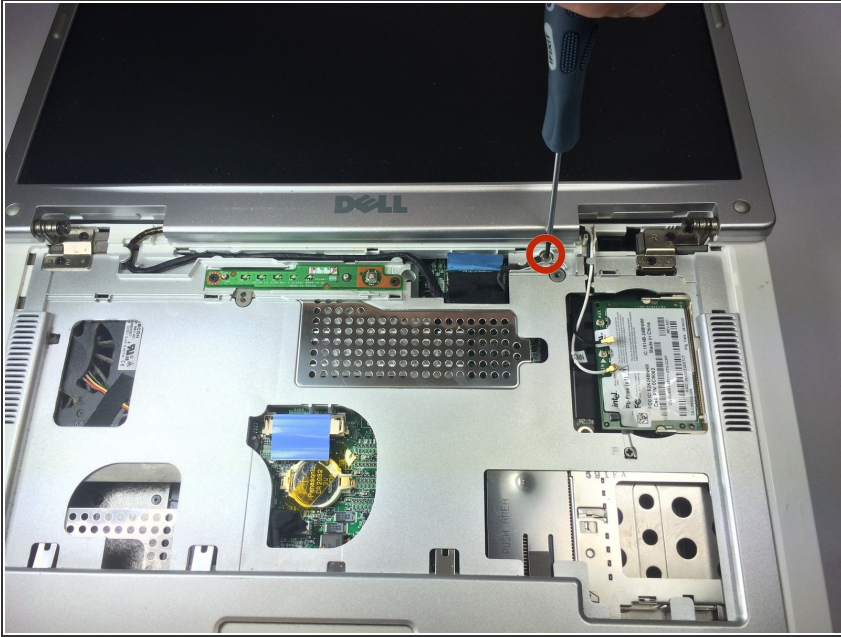
- Gently lift the keyboard away from the laptop without harming the cord that is located at the bottom of the keyboard.

Step 6



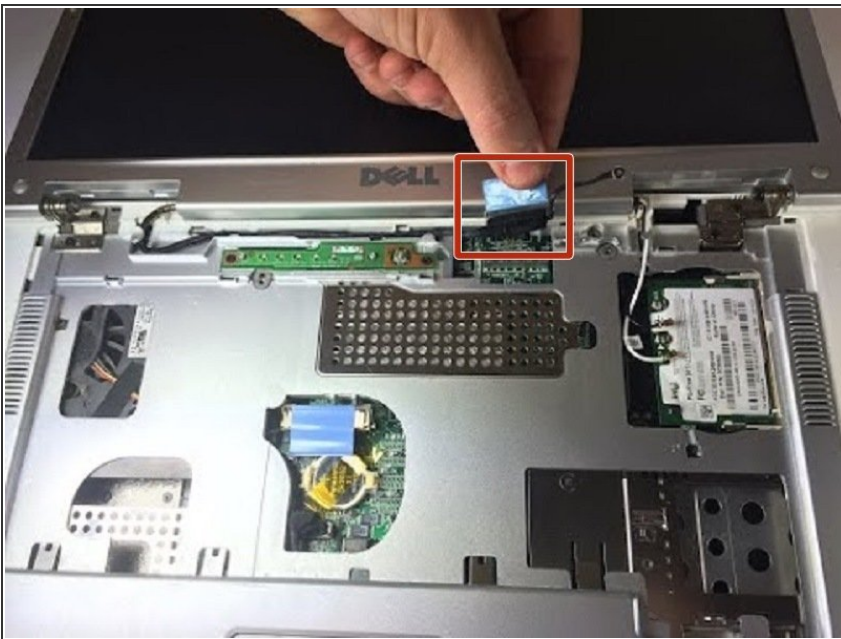
- Gently pull the blue tab up until it comes away from computer.

Step 7 — Screen



- Remove one 4mm Philips #00 screw to completely disengage blue tab.

Step 8



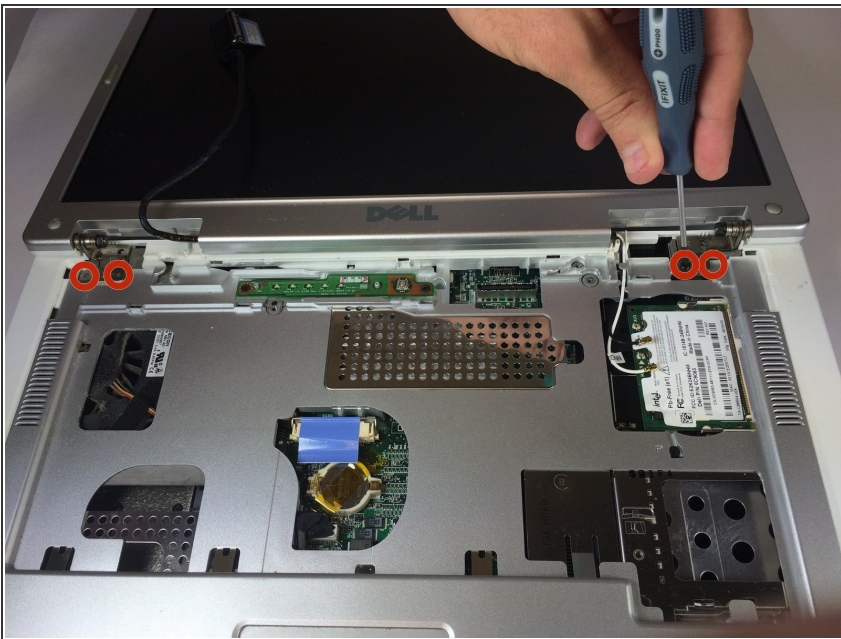
- Pull and disconnect the blue tab.

Step 9



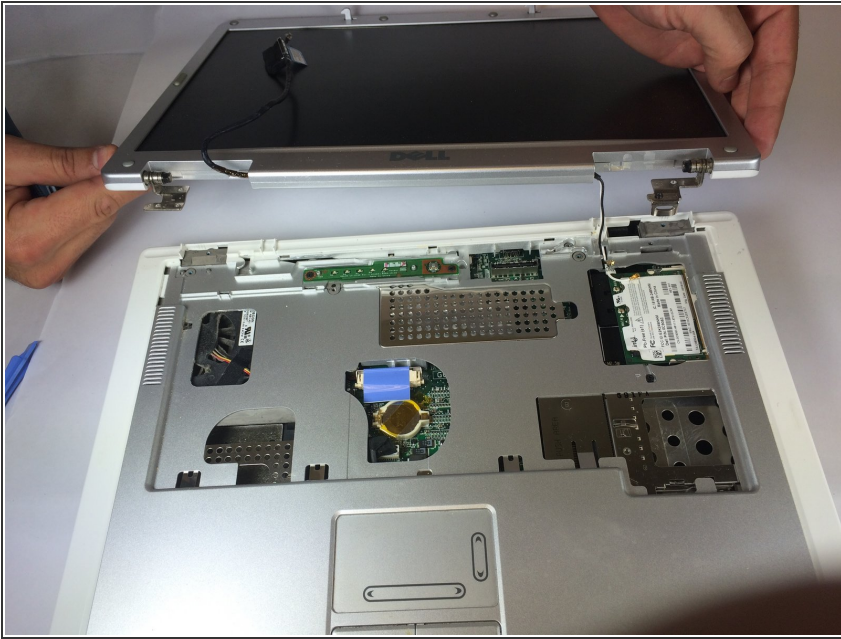
- Disconnect the black and white wires.

Step 10



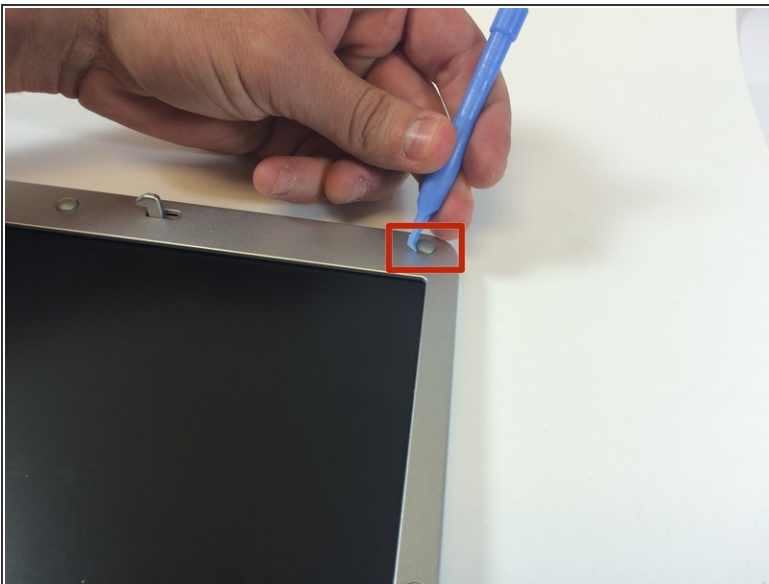
- Remove four 4mm Philips #00 screws at the hinges for the screen.

Step 11



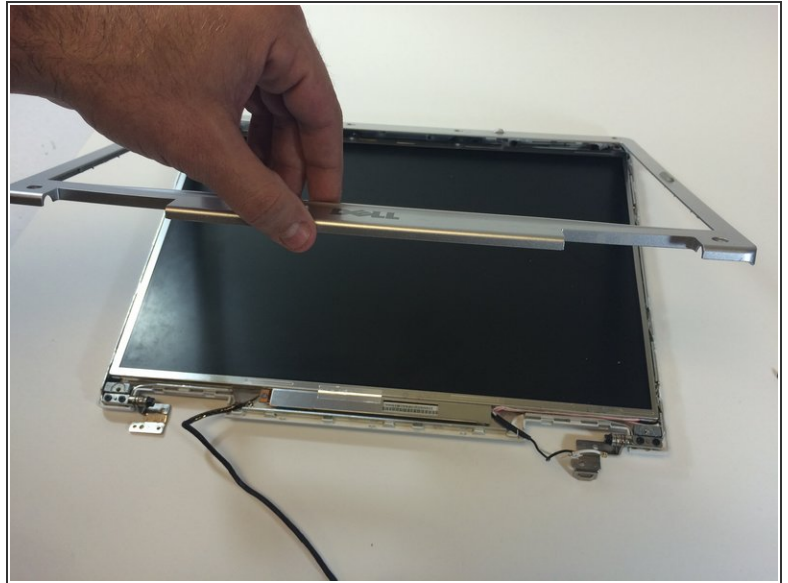
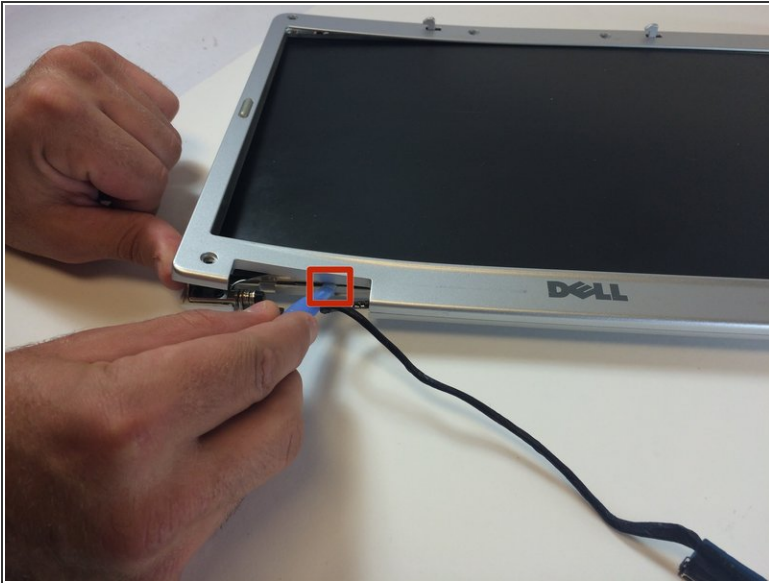
- Separate the top panel of the laptop from the bottom panel.

Step 12



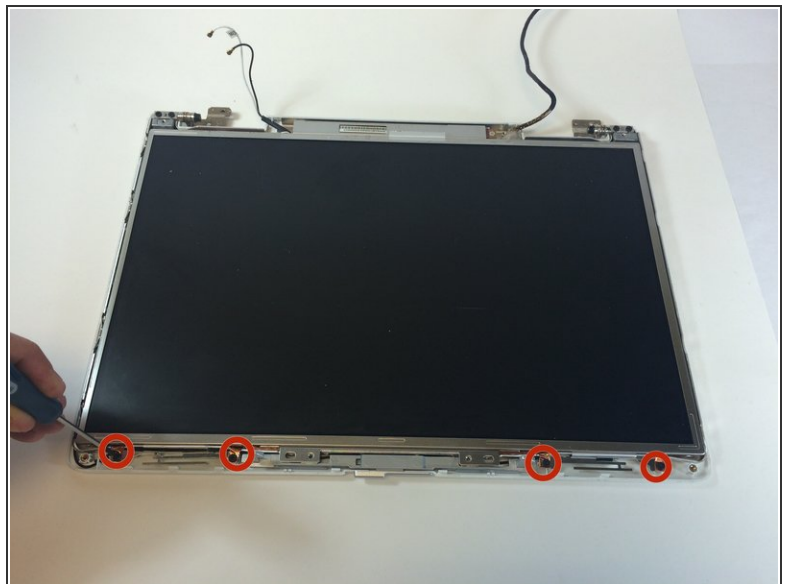
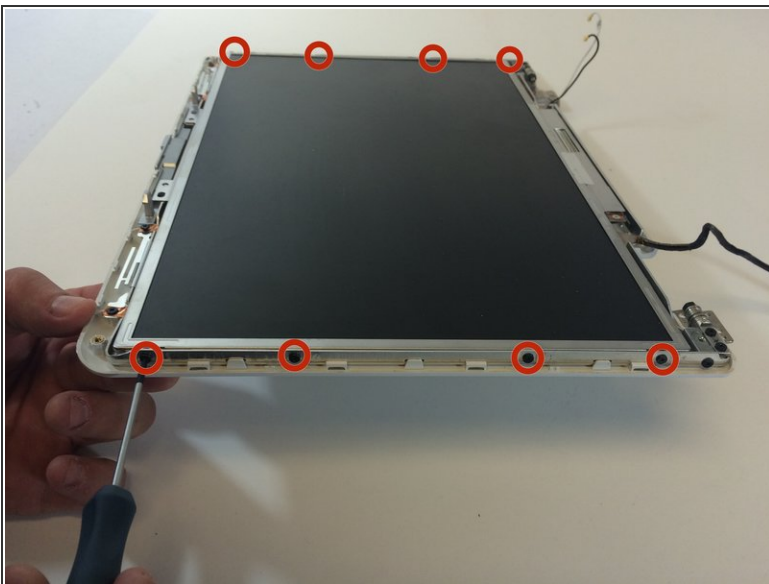
- Use the plastic opening tools to remove the six rubber screw covers in the corners.
- Remove six 4 mm #00 Philips screws located in the corners.

Step 13



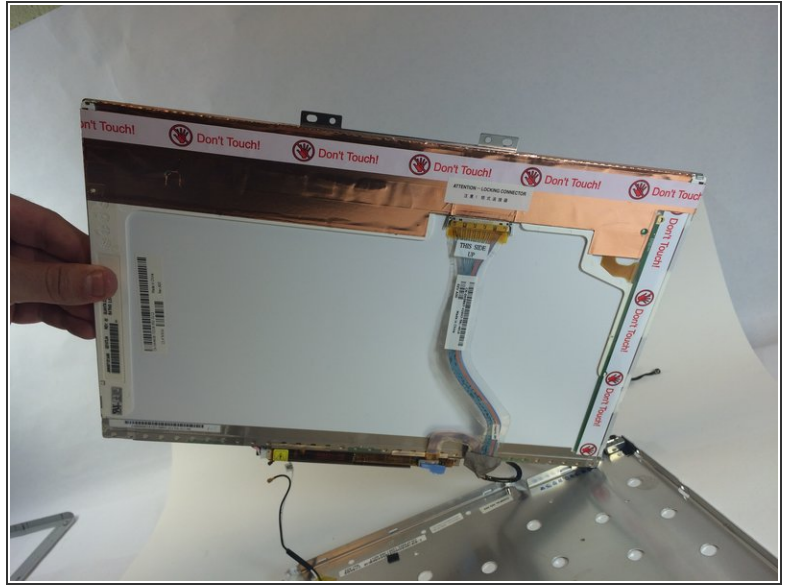
- Insert the plastic opening tools between the screen holders.
- Go completely around the screen, separating the screen holders with the plastic opening tools.

Step 14



- Remove 12 4mm #00 Philips screws at the perimeter of the screen.

Step 15



- Gently lift the screen from the holder.

⚠ Do not touch the copper part of the bottom side of the screen.

To reassemble your device, follow these instructions in reverse order.