



# AlphaSmart Pro Keyboard Replacement

This guide will allow you to replace the entire keyboard of your AlphaSmart Pro device.

Written By: Ulysses Ramirez



---

# INTRODUCTION

Defective keyboard? This guide will allow you to replace your entire keyboard in a snap!

---



## TOOLS:

- [Phillips #00 Screwdriver](#) (1)
  - [Spudger](#) (1)
-

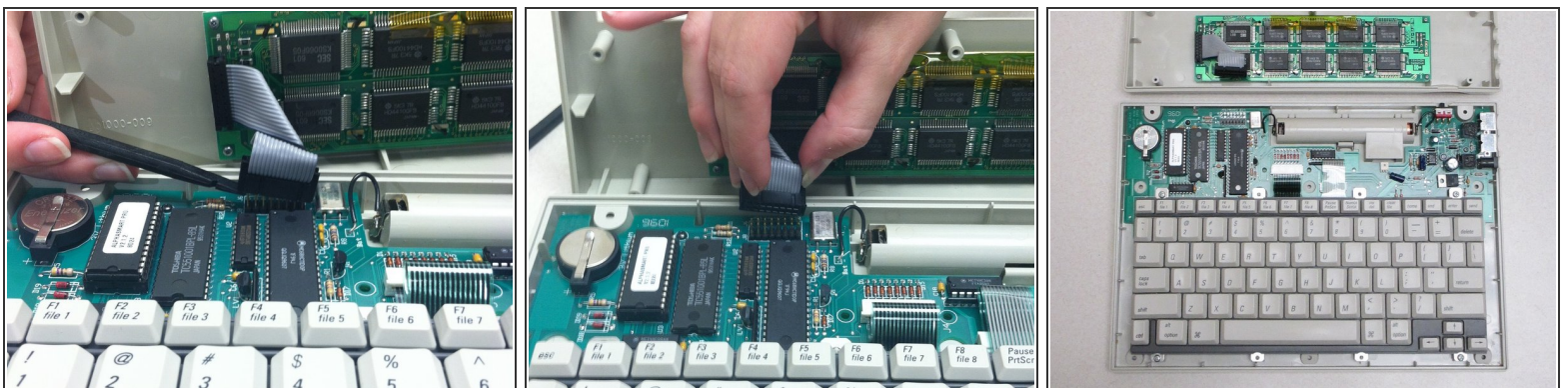
## Step 1 — Separating Panels



**⚠** Power off your AlphaSmart Pro device and remove the batteries before beginning disassembly.

- Remove all eight 1 cm Phillips head screws from the back panel of the AlphaSmart Pro with the Phillips #00 Screwdriver.
- Carefully separate the front panel from the back panel.
- i** Notice that the front and back panels are still connected by a ribbon cable.

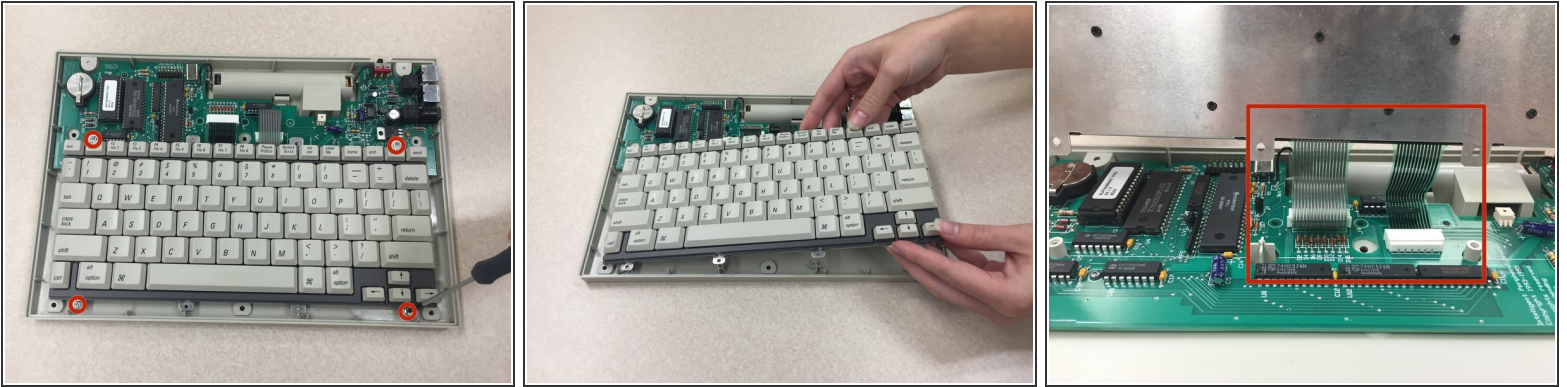
## Step 2 — Detaching Ribbon Cable



- To remove the ribbon cable, use the spudger to lift each side of the connector from the socket.
- Gently pull up on the connector to completely remove the connector from the socket.
- Remove front panel from the motherboard.

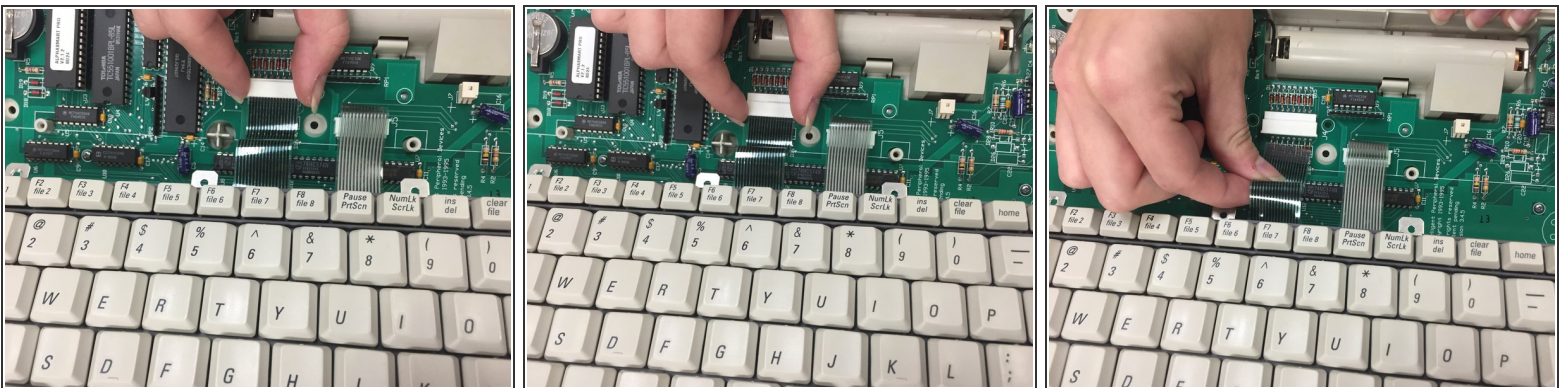


### Step 3 — Prepping Keyboard For Removal



- Use the Phillips #00 Screwdriver to remove the four 1 cm screws from each corner of the keyboard.
- Gently lift the keyboard from the rear panel.
- i** Notice that the keyboard is still connected to the motherboard by two ribbon cables.

### Step 4 — Detaching keyboard Ribbon Cables



- To remove the ribbon cable, gently pull the connector in the direction of the ribbon cable.
- Pull the ribbon cable to remove it from the connector.
- Repeat the exact steps above for the other ribbon cable.
- i** While the large connector on the left must be pulled toward you in order to remove the ribbon cable, the smaller connector on the right must be pushed away from you.

## Step 5



- Remove keyboard from motherboard.

To reassemble your device, follow these instructions in reverse order.