



Acer AL1714 Power Supply Board

This guide will demonstrate the steps needed to disconnect and replace the Power Supply Board in the Acer AL1714. A malfunction in this part can cause possible issues with the ability to turn your device on.

Written By: Christopher Kelly





TOOLS:

- [Phillips #1 Screwdriver](#) (1)
 - [8" Needle Nose Plier](#) (1)
 - [Tweezers](#) (1)
 - [iFixit Opening Tools](#) (1)
-

Step 1 — Power Supply Board



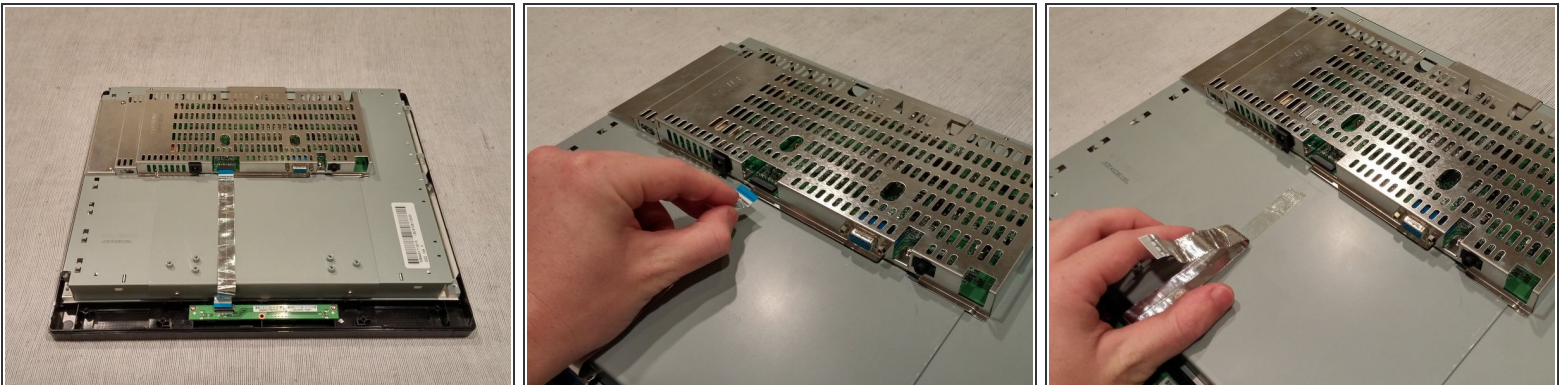
- Turn the monitor facedown.
 - Unscrew the 5 screws holding the back cover on.
- i** (This may require flipping the monitor over and shaking the screws loose once they're already unscrewed)


Step 2



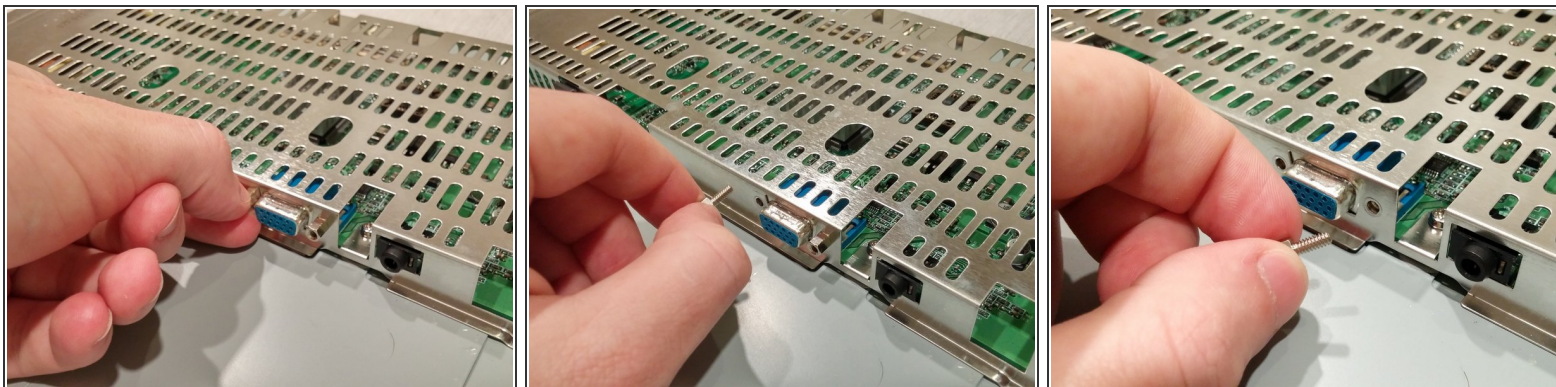
- Take the edge tool or a metal ruler and insert it into bezel.
- Apply pressure and push down.
- Do the same to the right side.
- Once the side of the bezel facing you is decoupled, take the back cover and pry it loose.

Step 3




- Remove the Flat Flex Cable from the Power Supply board under the metal cover.
 - Pull the cord back and out of the way.
-  (It may be stuck down with adhesive)

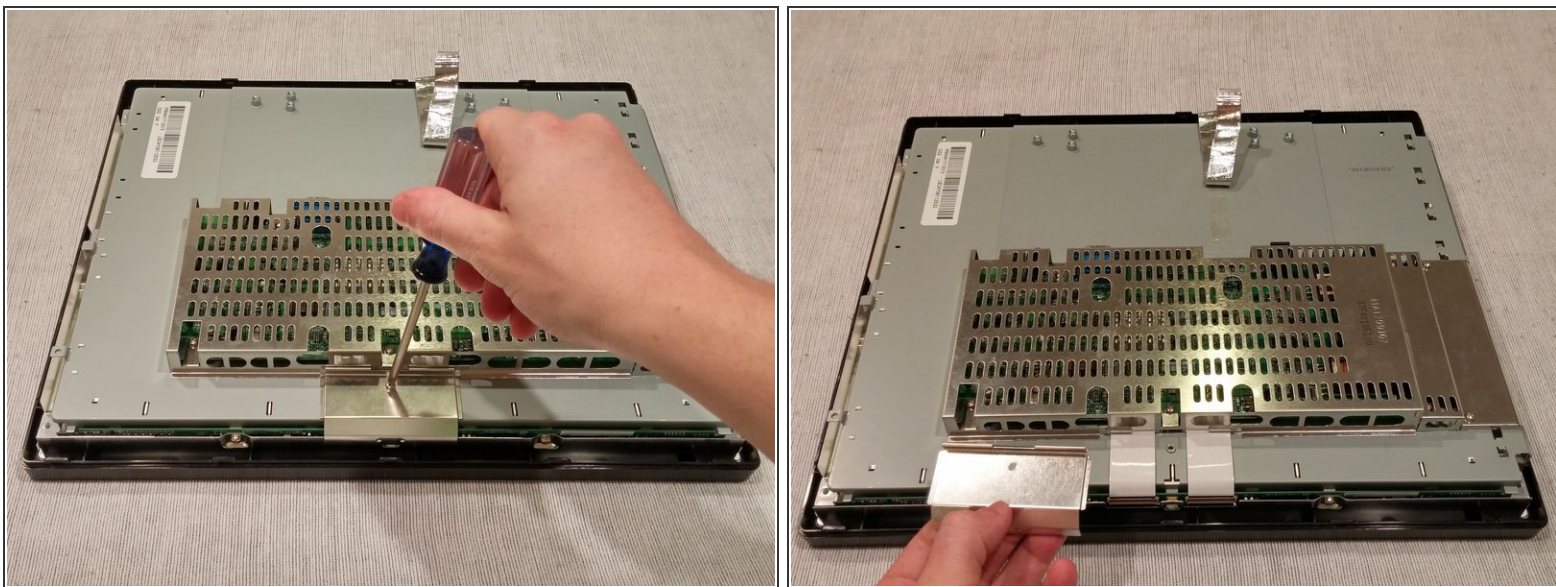
Step 4




- Unscrew the cord anchors for the VGA port.

 (Use needle nose pliers if they're too tight for removal by hand)

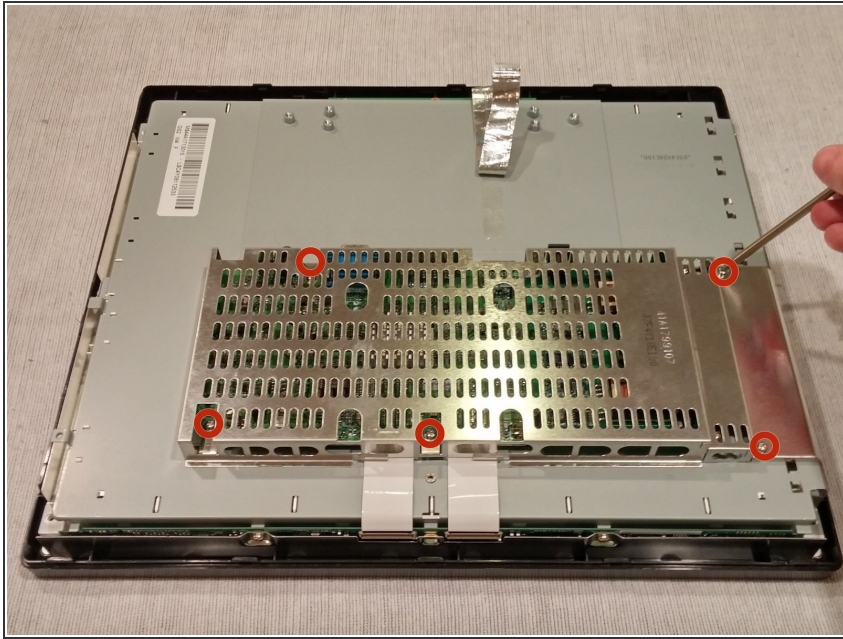
Step 5



- Turn the monitor around.
- Unscrew the 1 screw holding the Flat Power Cable cover in place.
- Lift up and remove the Flat Power Cable cover.

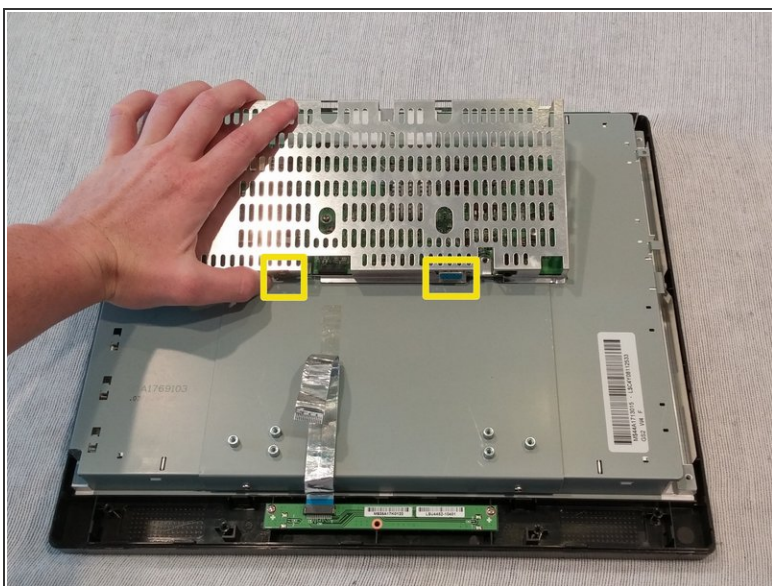
 (Careful: it may be sharp)

Step 6



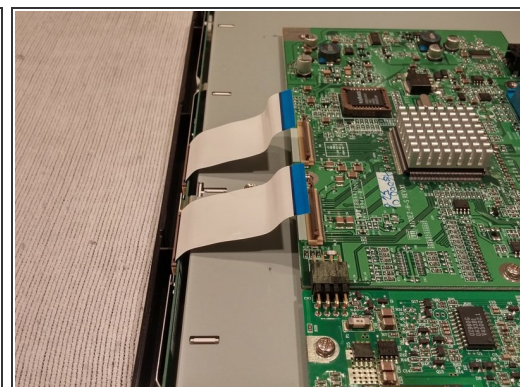
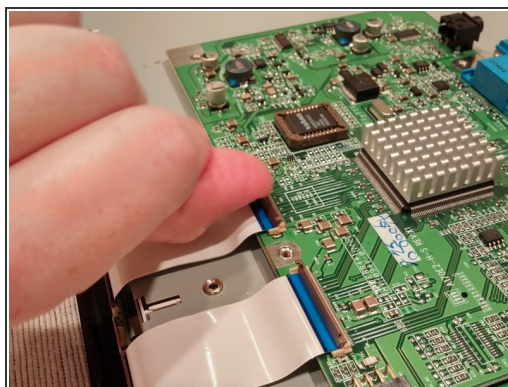
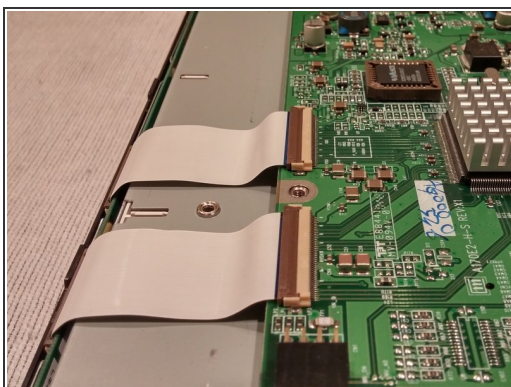
- Unscrew the 5 screws holding the metal cage on.

Step 7



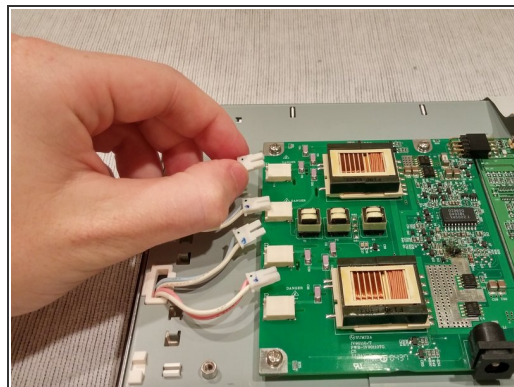
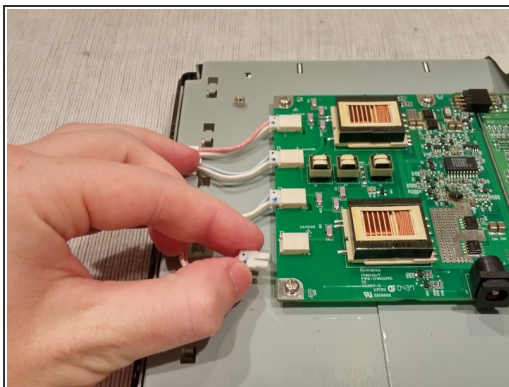
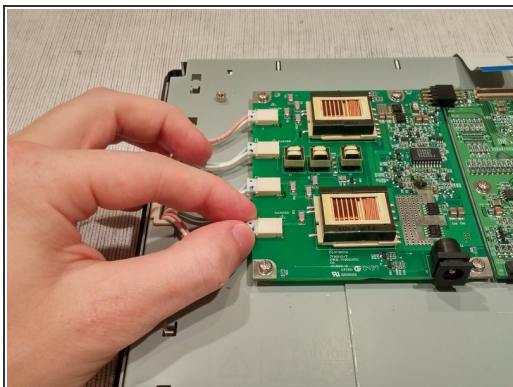
- Turn the monitor around.
 - Lift up on the back of the metal cage slightly.
 - Pull the cage toward self.
- i** (Must be careful to free the cover of the VGA port and power supply input)

Step 8



- Lift up on the Flat Flex Cable holder tabs to release the cords.
- Lift up on the Flat Flex Cables and bend them out of the working area.

Step 9



- Unplug the 4 backlight wires from their ports on the Power Supply Board.
- ⓘ (Considering their size, the best way to unplug the backlight wires is by slowly jiggling and pulling the wires out of place)

Step 10



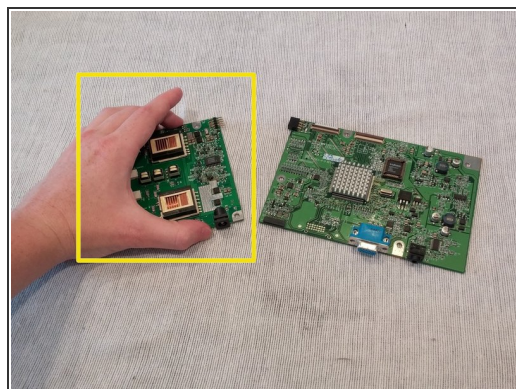
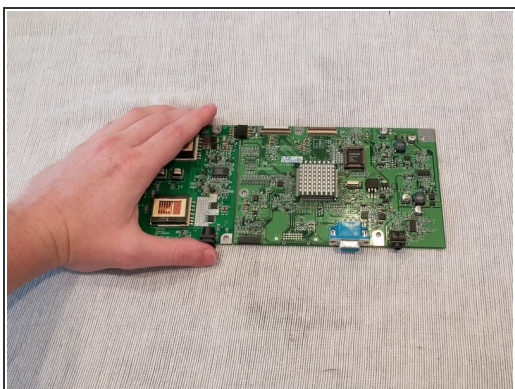
- Unscrew the 5 screws holding the joined Power Supply and Video Display boards on.

Step 11



- Lift and remove the joined Power Supply and Video Display boards.

Step 12



- Carefully detach the Power Supply and Video Display boards at their connector joint.
- Replace the Power Supply Board with a new part.

To reassemble your device, follow these instructions in reverse order.