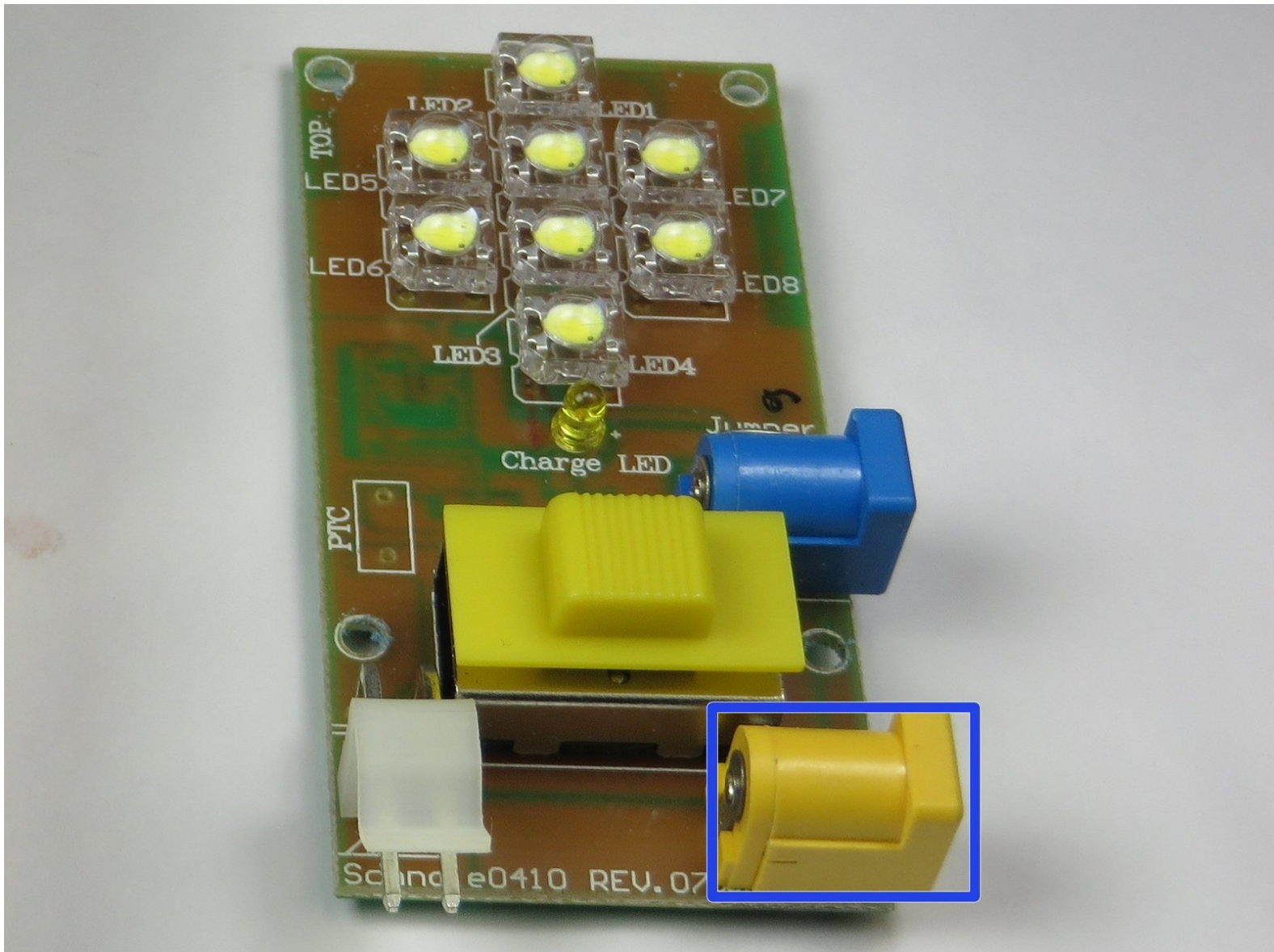




# Fosera Scandle 200 Charging Terminal Replacement

In this guide instructions will be given on how to remove a charging terminal in the case that it stops working.

Written By: David



---

## INTRODUCTION

This guide will explain and show how to replace a charging terminal that has stopped working. Replacing it requires the use of a soldering iron and the Spudger. This is a fairly easy replacement guide and should only take around fifteen minutes.



### TOOLS:

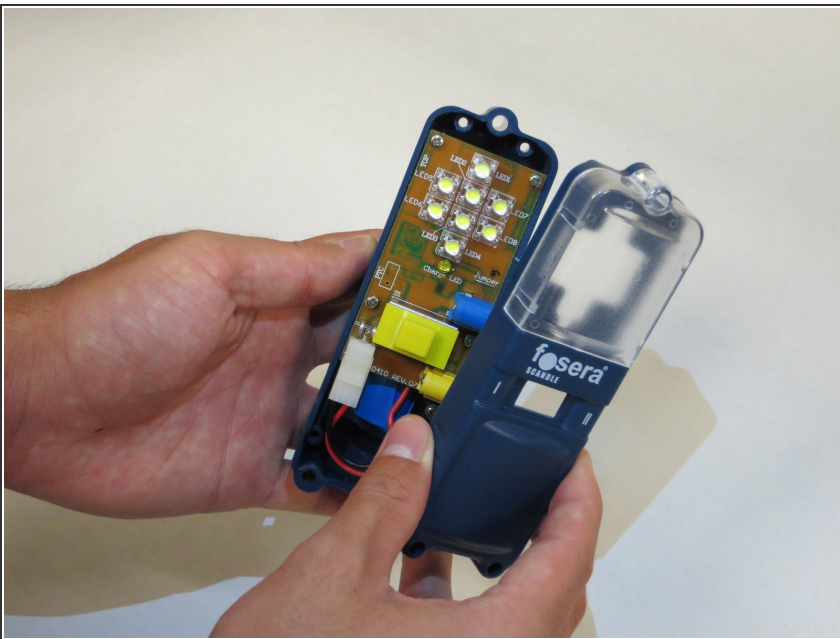
- [Phillips #0 Screwdriver](#) (1)
  - [Spudger](#) (1)
  - [Soldering Iron](#) (1)
-

## Step 1 — Motherboard Removal



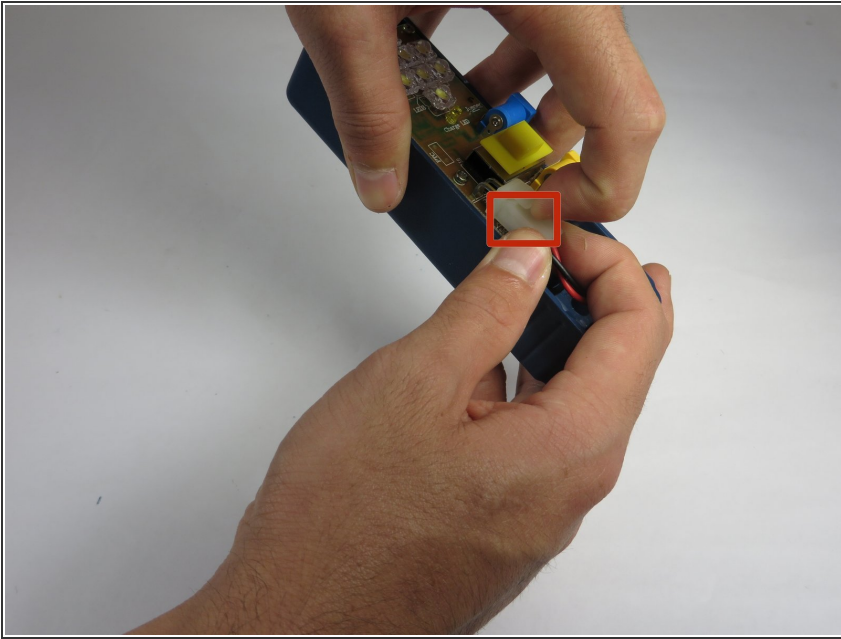
- To open up the casing, you will need to unscrew the four Phillips #0 15mm screws which are accessible from the back.

## Step 2



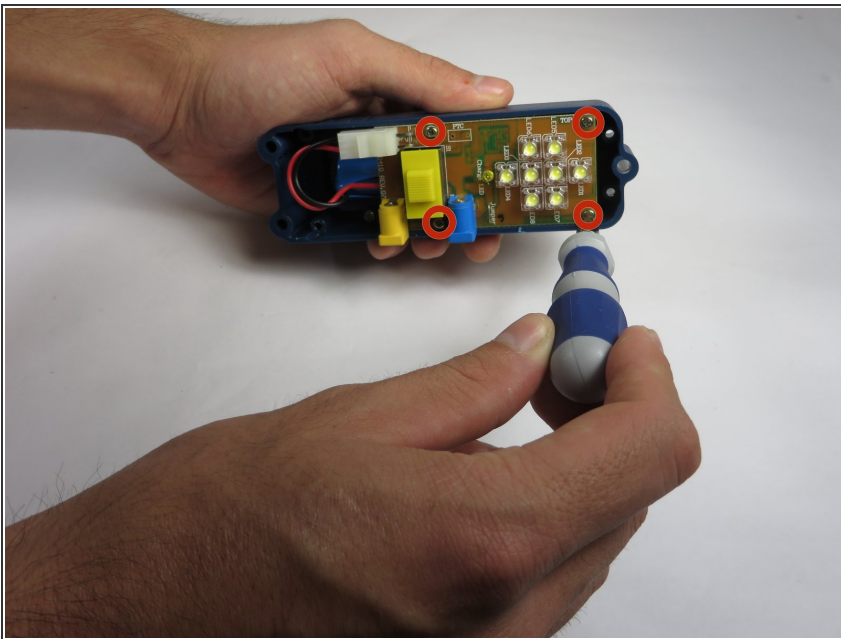
- Gently separate the two halves of the casing.

### Step 3



- Disconnect the battery from the motherboard by lifting up on the white plastic tab on the top of the connection.
- Gently pull the cord out by the white plastic adapter. Do not pull from the red and black cord.

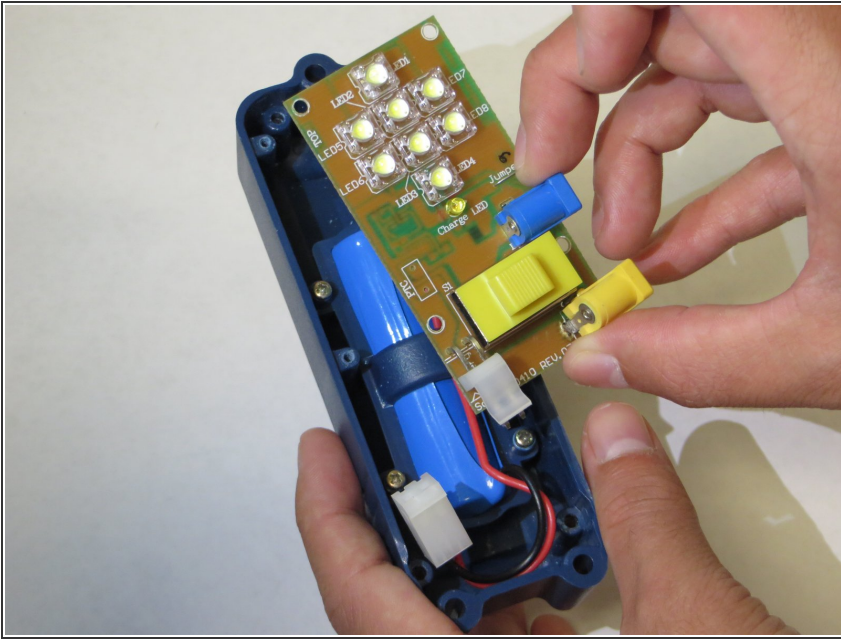
### Step 4



- Unscrew the Phillips four #0 15mm screws to free the motherboard from the casing.

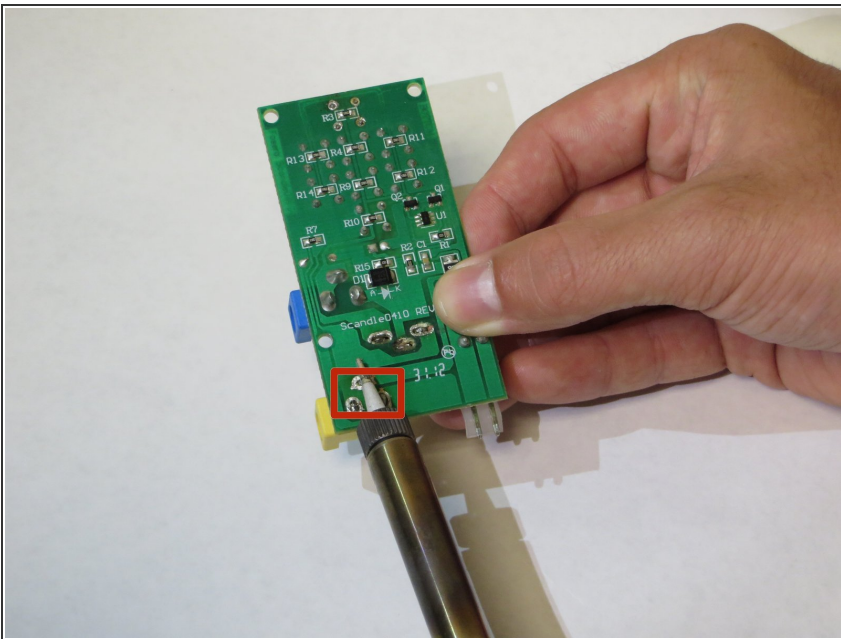


## Step 5



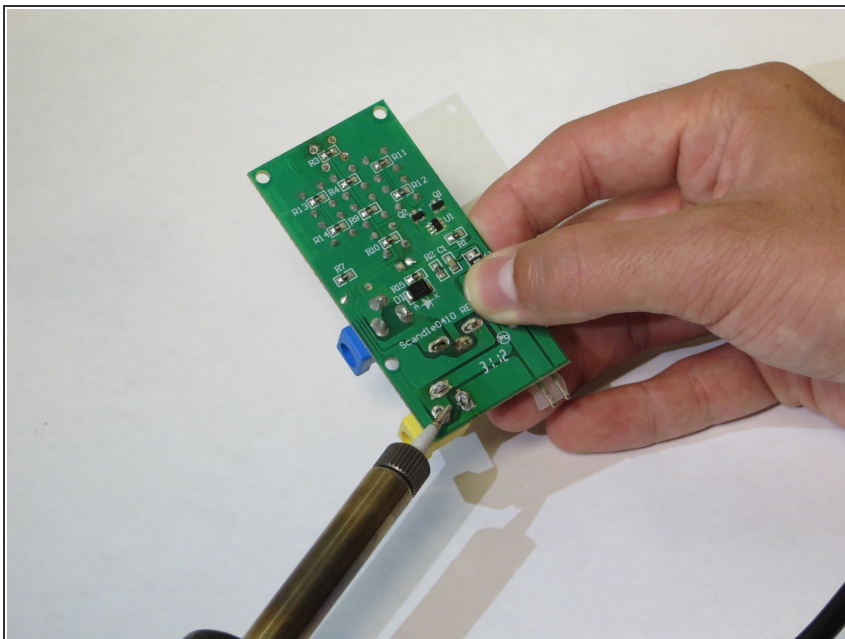
- Slowly pull the motherboard out of the casing. Make sure the loose battery wire doesn't get snagged.

## Step 6 — Charging Terminal



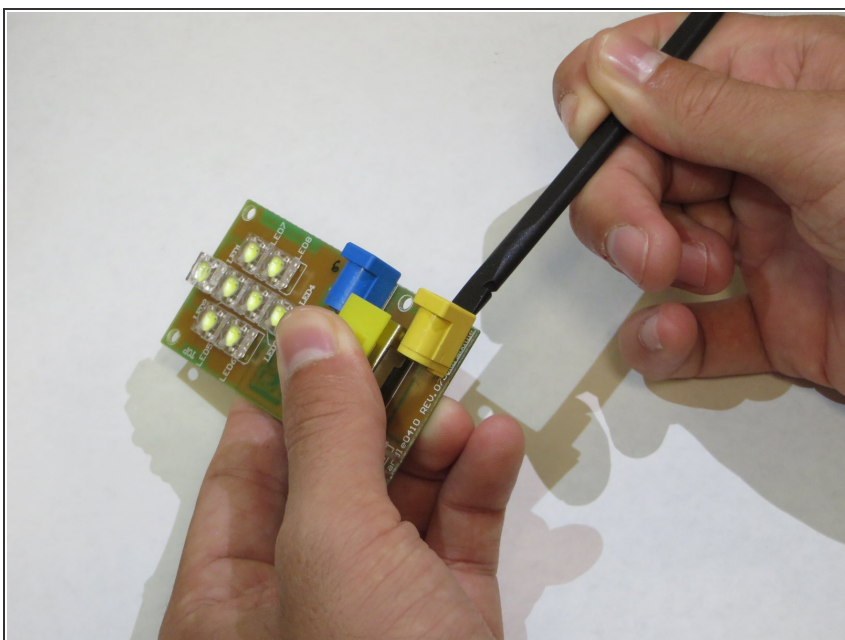
- ⚠ Use caution when using a soldering iron, the tip will be very hot.
- Locate the charging terminal's three prong connectors on the back of the motherboard.

## Step 7



- Start melting the solder on each prong connector individually with the soldering iron.

## Step 8



- Use the flat end of the spudger to pry the charging terminal away from the motherboard.

To reassemble your device, follow these instructions in reverse order.