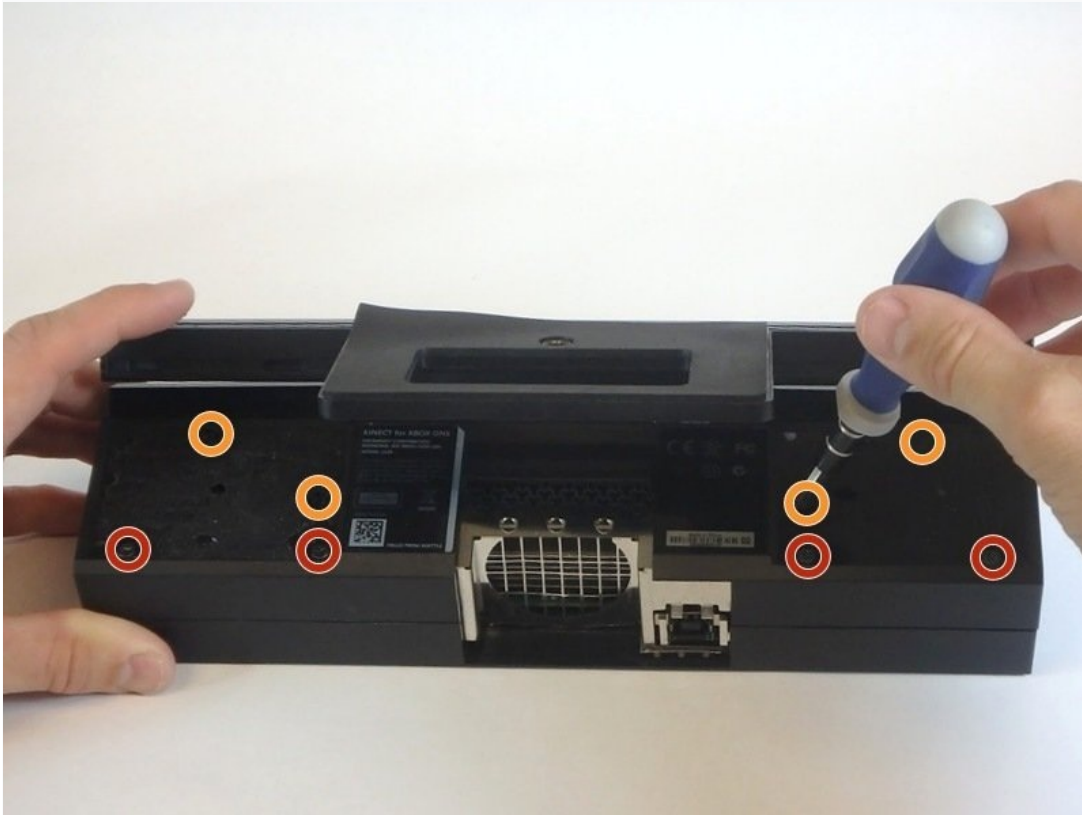




# Xbox One Kinect Outer Shell Replacement

Using the tools listed you will be able to...

Written By: Charles Schoonover



# INTRODUCTION

Using the tools listed you will be able to easily remove the outer black plastic shell of your beautiful Xbox One Kinect to replace it. After you remove the shell it will provide you with better access to the inner metal shell as well.

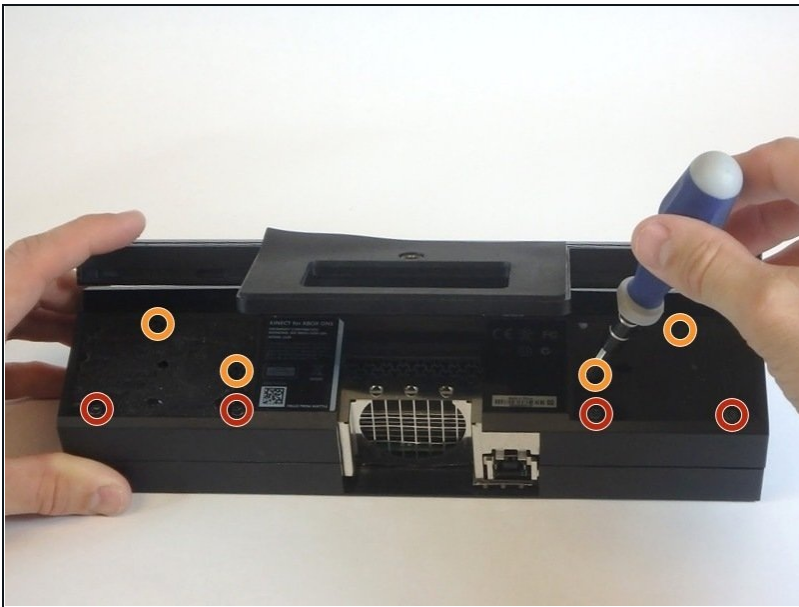
---

## TOOLS:

TR10 Torx Security Screwdriver (1)

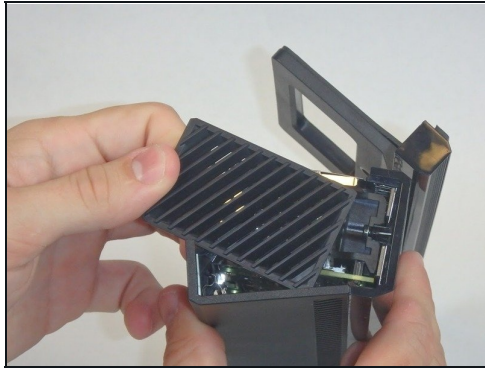
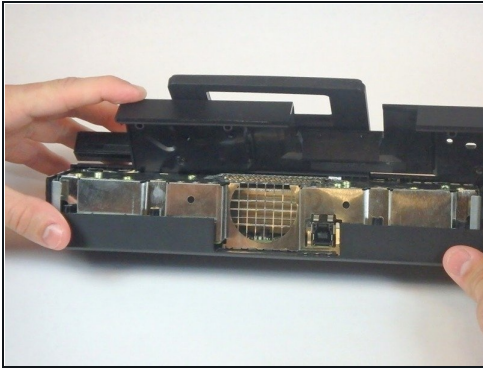
---

### Step 1 — Outer Shell



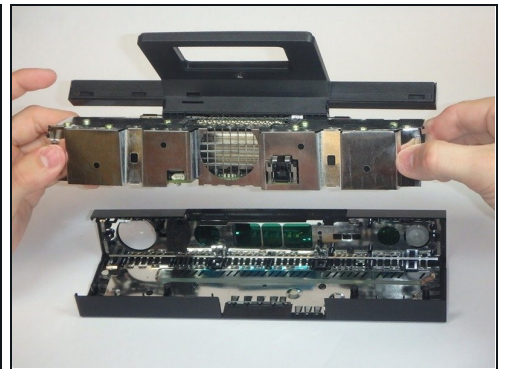
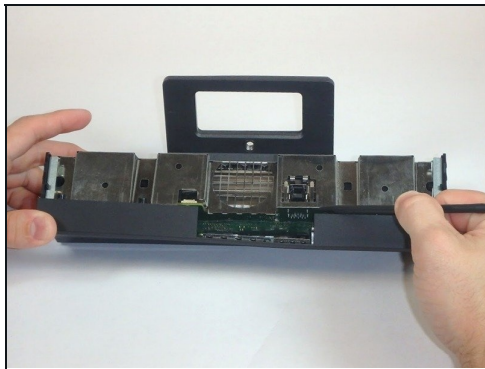
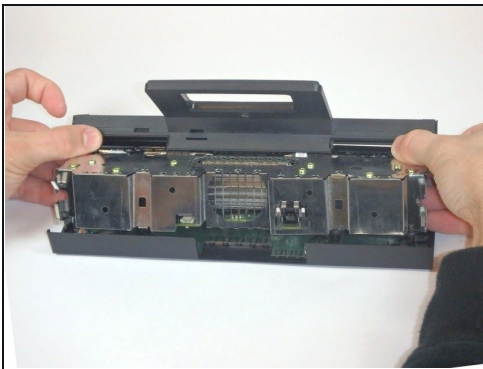
- Remove the sticker on the underside of the device.
- Remove the four 3.1x23.5 mm T10 screws underneath the sticker.
- While you're at it, remove the four 3.1x7.5 mm T10 screws beneath the sticker. Make note of the sizes and locations of the screws.

## Step 2



- Remove the back panel.
- Remove the black panels on either side of the Kinect, and remove the 3.1x7.5mm T10 screws underneath them.

## Step 3



- Using your thumbs, press firmly against the outer case on either side of the stand. This will disengage the internal assembly.
- Lift the internal assembly with the spudger.
- Remove the assembly from the case. You now have access to the inner shell of the Kinect, along with the heat sink, microphone, and LED sensor.

---

To reassemble your device, follow these instructions in reverse order.