



# iPhone 4 Teardown

iPhone 4 Teardown.

Written By: Walter Galan



# INTRODUCTION

We stripped the iPhone 4 down to its basic components. Apple definitely spent time giving the phone a thorough makeover, meticulously changing every little facet. We are happy to splay the fruits of their labor for your enjoyment!

We have confirmed that the iPhone's A4 processor has 512 MB RAM, unlike the iPad's more limited 256 MB. This decision may have been made fairly late in Apple's development cycle, because early leaked prototype phones only had 256 MB.

Can't get enough? Follow [@ifixit](#) on Twitter.

You can also take a look at the the YouTube [video slideshow](#) of the teardown!

For more detailed technical information on the silicon inside the iPhone, be sure to check out Chipworks' [in-depth analysis](#) of the iPhone 4's components.



## TOOLS:

- [P2 Pentalobe Screwdriver iPhone](#) (1)

*The iPhone 4 originally shipped with Phillips #00 screws on its outer case, but a hardware update later changed them to Pentalobe screws.*

- [Phillips #000 Screwdriver](#) (1)
  - [iFixit Opening Tools](#) (1)
-

## Step 1 — iPhone 4 Teardown



- The world's most wanted device is now in the hands of the world's most foremost tinkerers!
- The all-new iPhone 4 features upgrades from the 3GS including:
  - A redesigned glass & stainless steel body that shaves 3.5 mm off the width and is 3 mm thinner than the 3GS.
  - Choice of black or white coloring
  - Retina display featuring four times the pixel density of the 3GS
  - [iOS 4](#) for multi-tasking
  - 5 MP, 720p capturing rear-facing and VGA front-facing cameras

## Step 2



- The iPhone 4's design is a dramatic departure from the [aluminum](#) and [plastic](#) drenched days that have plagued the iPhone in the past.
- The rugged stainless steel bezels around the iPhone 4's perimeter double as both structural supports and antennas to boost reception.
- Only time will tell if they absorb shock as poorly as the [iPhone 3GS](#).
- Shameless plug:
  - ✦ Never been to iFixit before? We are a [repair manual](#) for every thing. Our goal is to show everyone how to fix all their own stuff!
  - We also sell useful things, like [Mac parts](#), [iPad parts](#), and [tools](#).

## Step 3



- i** An iPhone first: Interestingly enough, the storage capacity is not etched on the outer case of the iPhone 4.
- We'd expect our 32 GB iPhone 4 to fulfill its promise and give us, well, 32 GB. Unfortunately it has an actual capacity of 29.06 GB.
- i** Given the fact that 301 MB of "other" data is being stored in memory, this leaves the user with **28.77 GB** of free space.
- In terms of OS, the iPhone 4 comes preinstalled with the newly released iOS 4, build 8A293.
- The iPhone 4 is Model A1332. Interestingly, that's a lower number than the [A1337 iPad 3G](#).

## Step 4



- Like the iPhone 3G and 3GS, there are two silver [Phillips #000](#) screws at the bottom of the phone. Note: newer iPhone 4 handsets use 5-point "pentalobe" screws instead, requiring the use of a special screwdriver.
- In a departure from the design of the 3G and 3GS, removing the screws releases the rear case, not the front glass.
- This design makes switching out the rear panel trivial, but unfortunately means that [replacing the iPhone 4 front panel](#) will likely be rather challenging.

## Step 5



- Removing rear panel gives us a pretty good look at the iPhone 4's innards.
- Holy battery! The inside of this thing is dominated by its juice-provider.
- It's pretty apparent that real estate was very limited inside the iPhone 4's 115.2 x 58.6 x 9.3 mm footprint.
- You can also see pressure contact on the inner face of the rear panel for what appears to be an antenna.

## Step 6



- Luckily, the battery can be easily removed once the back panel assembly is out of the way.
- The 3.7V 1420 mAh Li-Polymer battery allows for up to 7 hours of talk time on 3G or up to 14 hours on 2G.
- The battery connector is different than the one in the 3G and 3GS. Fortunately, the battery is not soldered to the logic board. This will make battery replacement on the iPhone 4 fairly easy to accomplish.
- The plastic pull tab for the battery says "Authorized Service Provider Only."

## Step 7



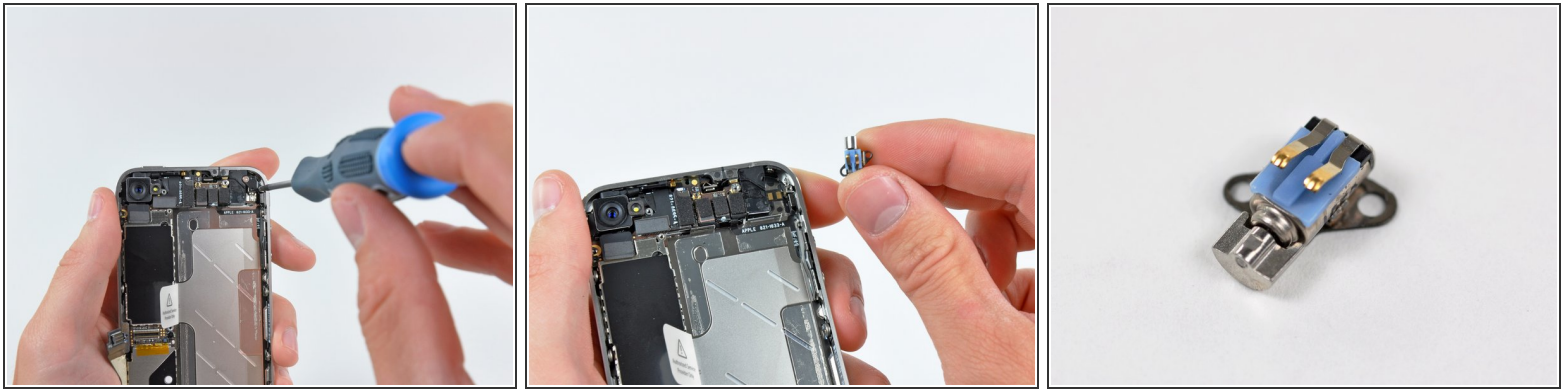
- No EMI shield will stand between us and the innards of this iPhone 4!
- The EMI shield comes off after five screws are removed to reveal lots of important connectors.
- Upon further inspection, it looks like the EMI shield actually acts as the Wi-Fi antenna. The long screw at the top and center grounds the antenna.

## Step 8



- The logic board is heavily embedded under wires and EMI shields.
- While we're not too busy, let's talk RAM. Unlike the iPhone 3GS and iPad, which are both equipped with 256 MB, the iPhone 4 has a whopping 512 MB!
- The increase in RAM allows for a larger amount of cached data allowing for a smoother and faster user experience.

## Step 9



- Hiding in the corner is the iPhone 4's vibrator motor, which...well...vibrates.

## Step 10



- Removing one of the many connectors on the logic board.
- In our brief usage, we did notice that the phone is considerably warmer on the right side. This makes sense, as the logic board is located entirely along the right side of the phone.

## Step 11



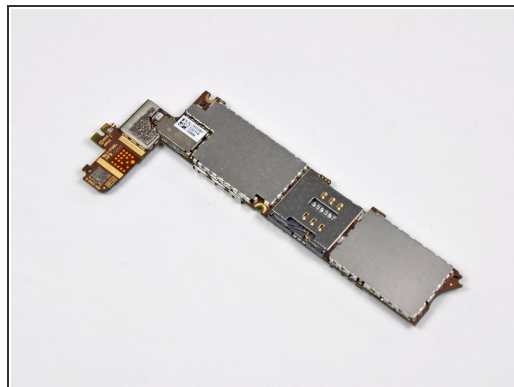
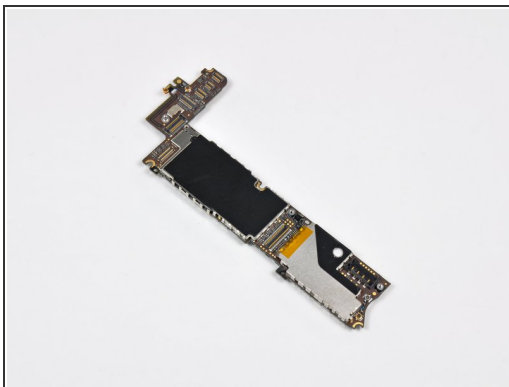
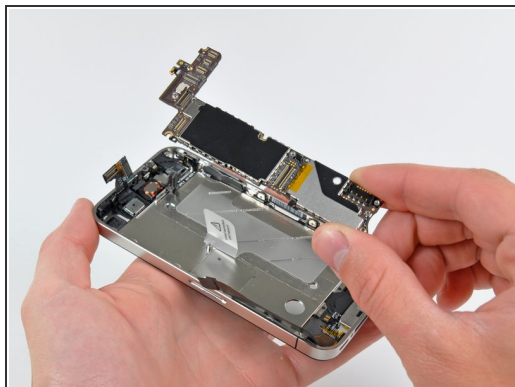
- Behold a beauty in the iPhone 4: a rear-facing 5 MP camera with 720p video at 30 FPS, tap to focus feature, and LED flash.
- This is a huge upgrade from the 3.2 MP camera found in the iPhone 3GS.

## Step 12



- Removing the lower antenna/speaker enclosure from the bottom of the phone.
- The improved audio chamber aids in clarifying sounds leaving the iPhone, including calls via speakerphone as well as music played through the speaker inside this housing.
- Apple hasn't made taking the iPhone 4 apart very hard so far: no 5-point Torx bits or fragile clips to be seen.

## Step 13



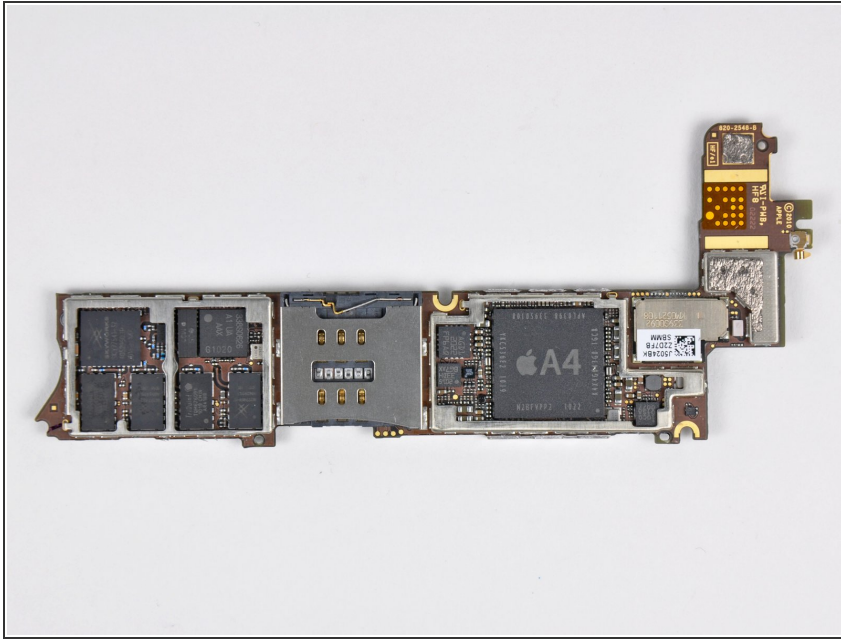
- Removing the logic board.
- The unusual shape and small size of the logic board shows just how costly real estate is inside this powerhouse of a phone.

## Step 14



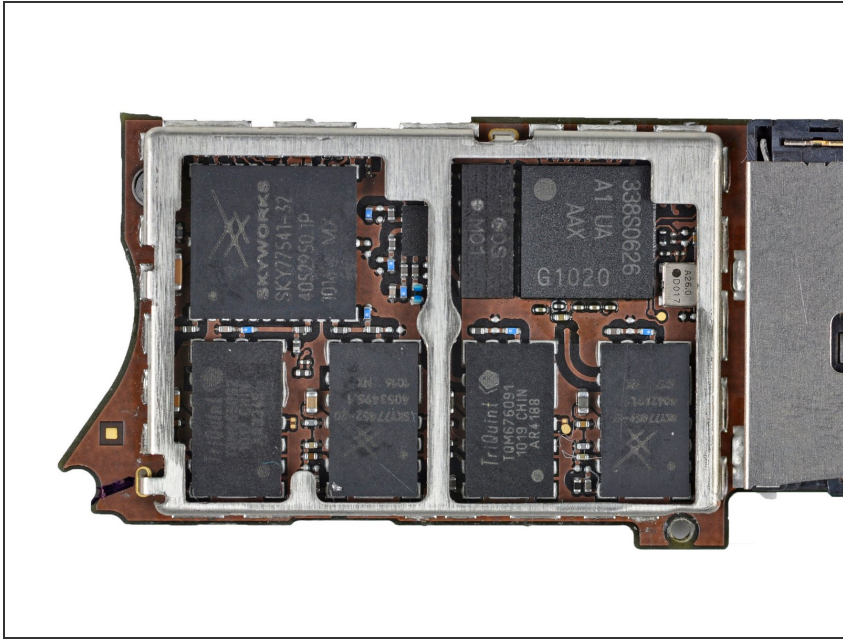
- Apple has integrated the [UMTS](#), GSM, GPS, Wi-Fi, and Bluetooth antennas into the stainless steel inner frame.
- The dual purpose stainless steel inner frame/antenna assembly addresses possibly the two biggest flaws concerning previous iterations of the iPhone: continuous dropped calls and lack of reception.
- Apple has gone a step further and tuned the phone to utilize whichever network band is less congested or has the least interference for the best signal quality, regardless of the actual signal strength. Early reports suggest this feature, while buggy in its early stages, will greatly improve the phone's reliability on AT&T's fragile network.

## Step 15



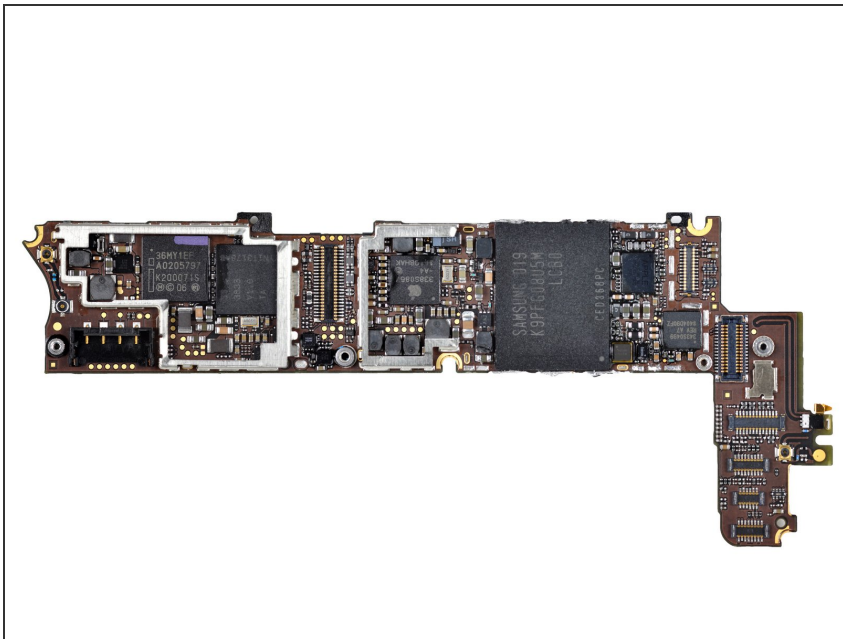
- With the EMI shields off, we can get a look at what makes this beast roar.
- Lurking deep within the phone, the [A4 processor](#), manufactured by Samsung, is the centralized unit that provides the iPhone 4 with the much needed computing power.
- Replacing the Samsung S5PC100 ARM A8 600 MHz CPU used in the 3GS, the new iPhone uses the ARM Cortex A8 core, much like its bigger sibling, the [iPad](#). The iPad's A4 is clocked at 1 Ghz.
- ⓘ The new Samsung Wave S8500 smartphone [uses the same Cortex A8 core](#)!
- Just to the left of the A4 package, the AGD1 is the new 3 axis gyroscope that we believe is designed and manufactured by ST Micro for Apple. The package marks on this device do not appear to be the currently available commercial part, L3G4200D. The commercial version of this gyroscope is yet to be released — Apple got first dibs on it.

## Step 16



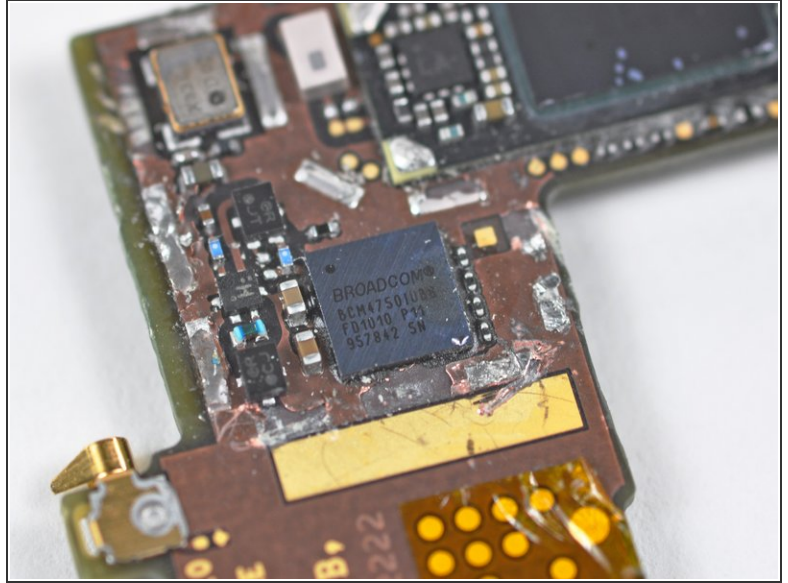
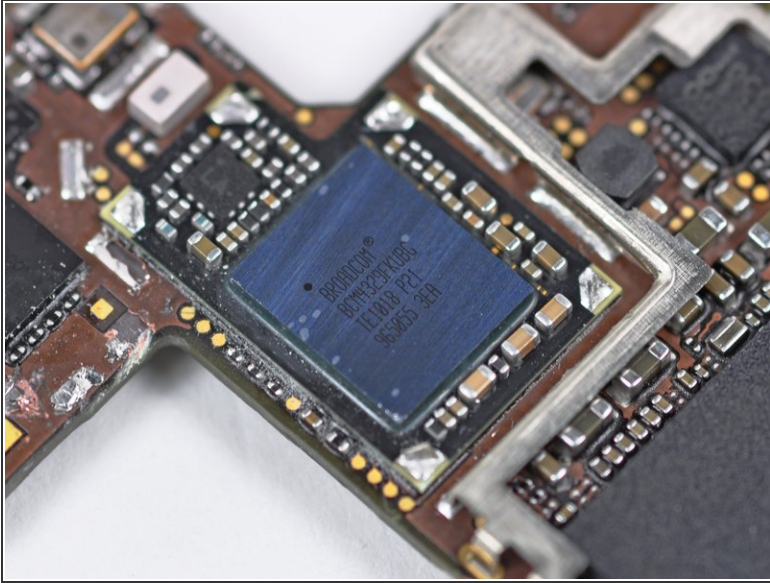
- On the top of logic board:
  - Skyworks SKY77542 Tx–Rx iPAC™ FEM for Dual-Band GSM/GPRS: 880–915 MHz and 1710–1785 MHz bands.
  - Skyworks SKY77541 GSM/GRPS Front End Module
  - STMicro STM33DH 3-axis accelerometer
  - TriQuint TQM676091
  - 338S0626

## Step 17



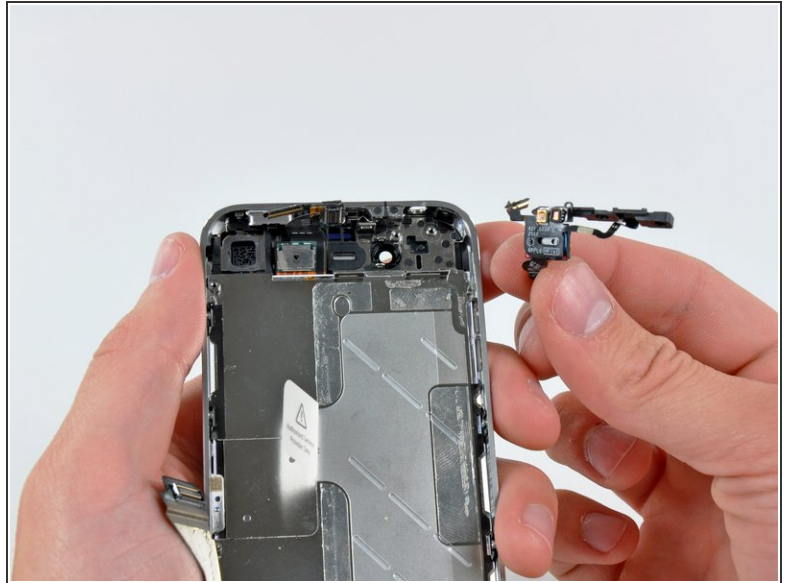
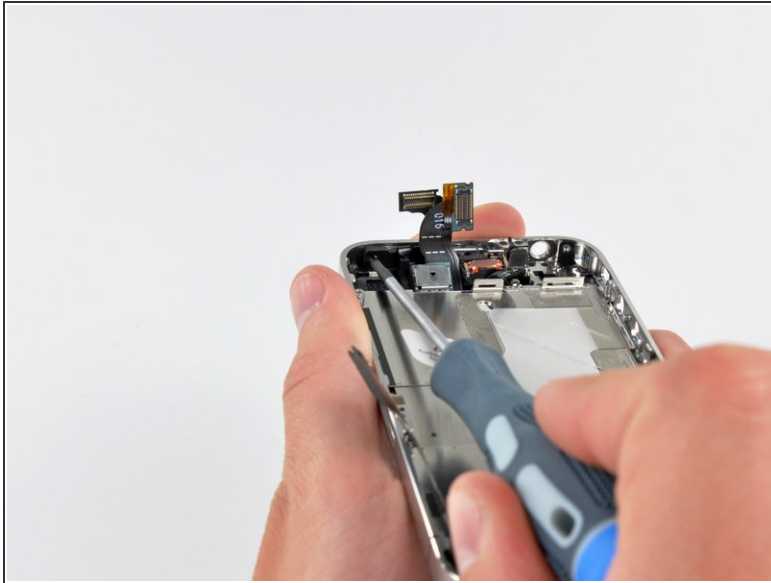
- On the back:
  - Samsung K9PFG08 flash memory
  - Cirrus Logic 338S0589 audio codec (Apple branded). This is the same part as in the iPad.
  - AKM8975 - newest magnetic sensor that promises to improve the performance over the prior generation.
  - Texas Instruments 343S0499 Touch Screen Controller
  - 36MY1EE NOR and mobile DDR

## Step 18



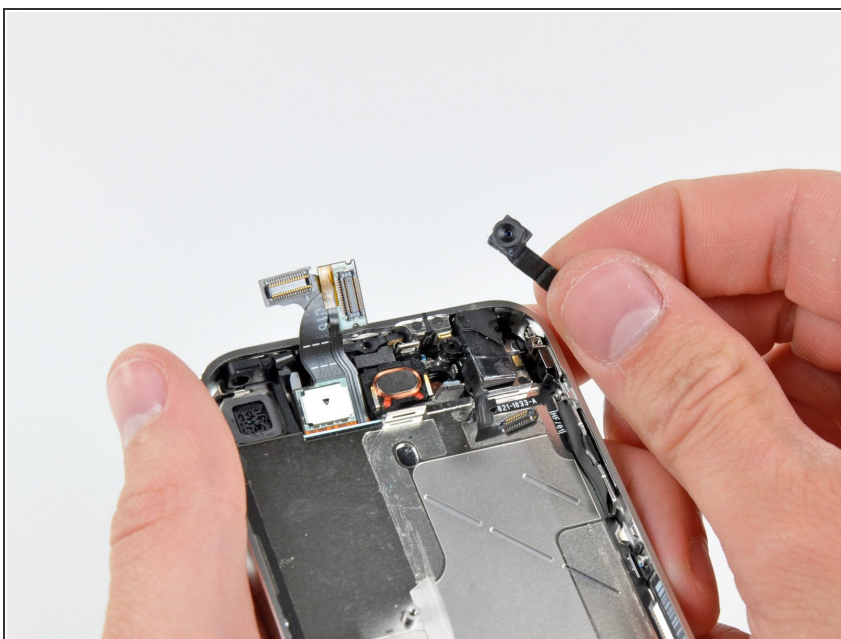
- Wi-Fi, Bluetooth, and GPS are all provided by Broadcom and located beneath EMI shields on the front side of the board.
- [Broadcom BCM4329FKUBG](#) 802.11n with Bluetooth 2.1 + EDR and FM receiver.
- [Broadcom BCM4750IUB8](#) single-chip GPS receiver.

## Step 19



- Up next we find the second microphone, which is used to cut out ambient noise and improve sound quality when talking on the phone.
- You can also see the ambient light sensor and the proximity sensor which are mounted right above the earpiece.

## Step 20



- The front-facing VGA camera.
- While the 5 megapixel camera on the rear of the iPhone 4 is ideal for video recording, the smaller camera on the front optimizes use of Apple's [FaceTime](#) for mobile-to-mobile video calls.

## Step 21



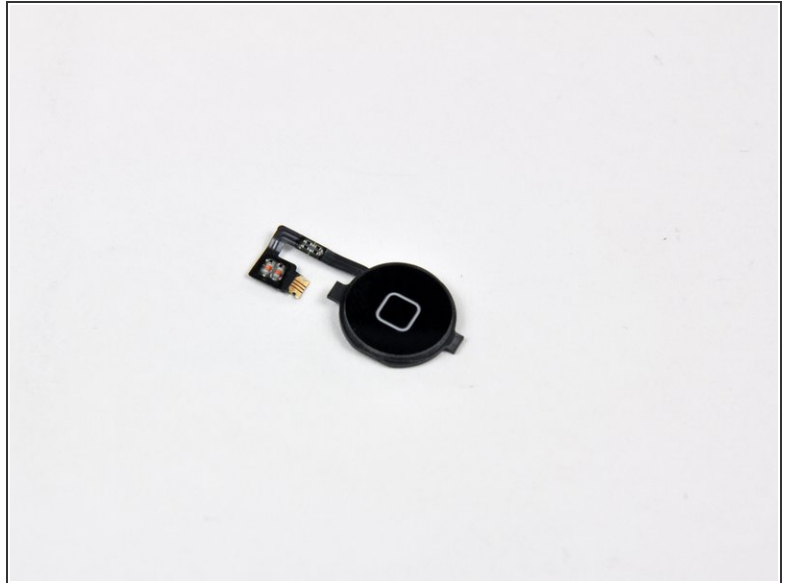
- The front panel comes off without too much additional trouble.
- The stainless steel body left behind is quite a marvel of gadget engineering.

## Step 22



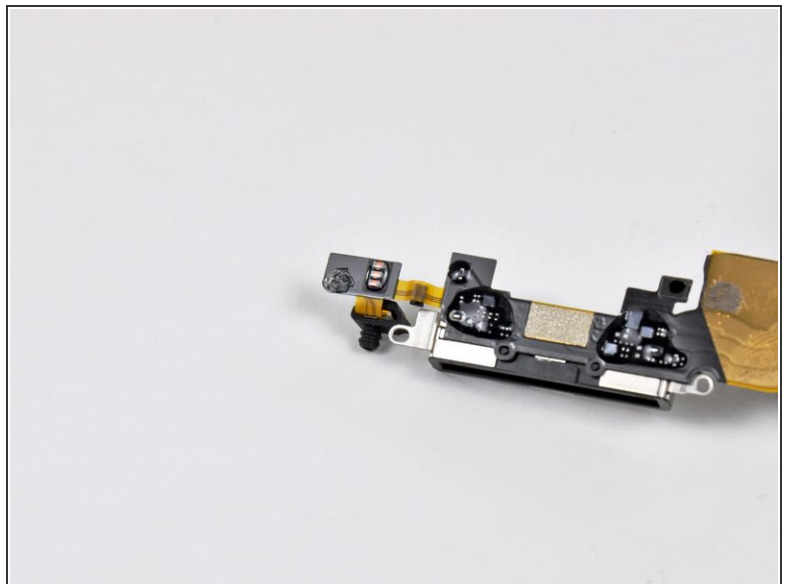
- The front glass panel of the iPhone is reported to be constructed of Corning [Gorilla Glass](#), a chemically strengthened alkali-aluminosilicate thin sheet glass that is reported to be 20 times stiffer and 30 times harder than plastic.
- Gorilla Glass holds many [advantages](#) as the iPhone 4's front panel, including its high resistance to wear and increased strength from an ion-exchange chemical strengthening process.
- LED Backlight for the LCD.
- Unfortunately, the LCD panel is very securely glued to the glass and digitizer, with the entire assembly measuring 3.05mm thick. It appears that if you break the glass, you'll have to [replace](#) the iPhone 4's glass, digitizer, and LCD as a single assembly.

## Step 23



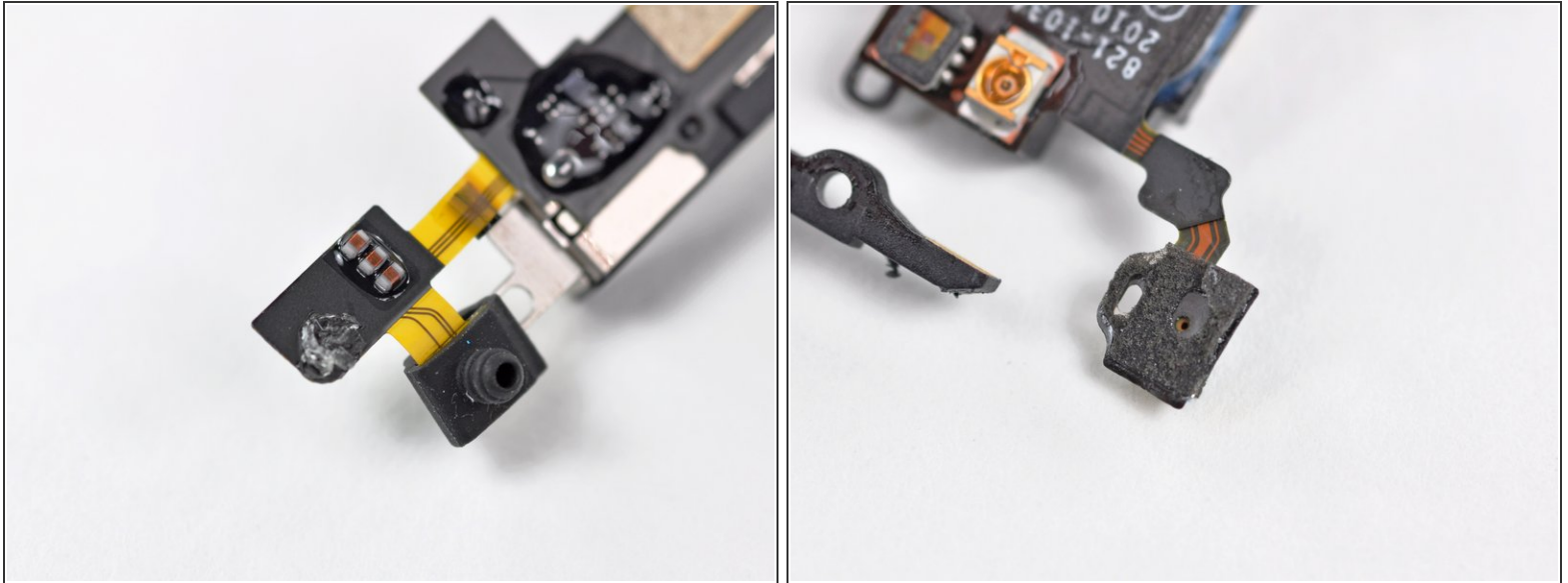
- Surprisingly, the electronic home button switch is attached directly to the home button itself.

## Step 24



- The 30-pin dock connector is where we would usually expect it to be: at the bottom of the iPhone.
- The primary microphone is also found at the bottom of the phone.

## Step 25



- Apple is following in the footsteps of the Nexus One by using dual microphones to help improve audio quality and suppress background noise.
- Interestingly, the two microphones are positioned at the two far ends of the phone. The microphone at the top of the iPhone is most likely utilized for capturing background noise to be analyzed by internal circuitry and used to cancel any noise put into the main microphone other than the user's voice.
- You can also see the ambient light sensor which adjusts the iPhone's brightness as lighting conditions change.
- The proximity sensor sits right next to the ambient light sensor. This will turn the display off when you bring the phone up to your ear thus preventing any touch interaction while it's pressed up against ear.

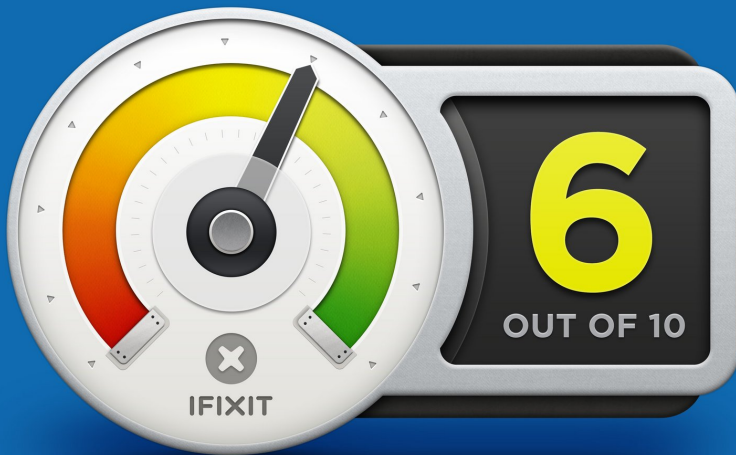
## Step 26



- As always, we provide each device with a fitting final layout shot that it so greatly deserves.
- We would like to thank you for joining us tonight during this monumental endeavor.
- We also created a set of [iPhone 4 repair guides](#) for all major components inside the device. They will definitely help you fix your iPhone 4 should something happen to it!

## Step 27

## REPAIRABILITY SCORE:



- iPhone 4 Repairability Score: **6 out of 10** (10 is easiest to repair)
  - The iPhone 4 is held together primarily with [lots of] screws, sans tabs, and limited adhesive.
  - The rear panel and battery are both easy to remove and replace (provided you have the right [kit](#) and/or correct [screwdriver](#)).
  - Apple is using [Pentalobe screws](#) to secure the rear panel and keep people out.
  - The LCD and glass are fused together, making repairing a cracked front panel more costly.
  - During disassembly, your finger oils interfere with the iPhone 4's RF grounding contact points, so we recommend you wear gloves while performing any repairs.