

Written By: Andrew Gillis



INTRODUCTION

This guide serves as a prerequisite step for all of the other repair guides. Removing the back panel is necessary to access any of the hardware within the tablet.



TOOLS:

- [iFixit Opening Tools](#) (1)
-

Step 1 — Remove SD Card



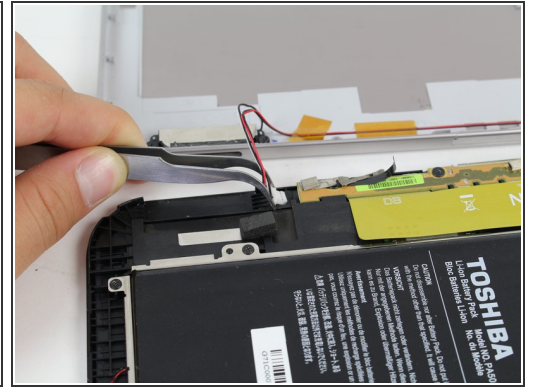
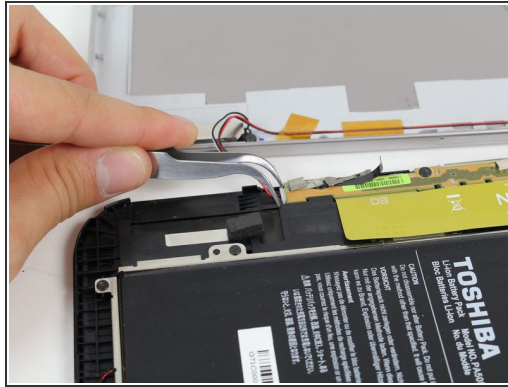
- Remove the SD card from the SD card slot.

Step 2 — Open the Tablet




- Use the opening tool to separate the front and rear panels by slipping the tool underneath the screen edge and sliding it around the entire device.
- ⓘ Make sure you unclip all of the clips on the back panel, or pulling it off will be difficult and may damage the tablet.

Step 3 — Disconnect Speaker Wires



- Remove the speaker cable from its socket by gripping both sides of the white connector piece with tweezers and pulling straight out.

 Be careful not to rip the wires out of the white connector piece.

To reassemble your device, follow these instructions in reverse order.