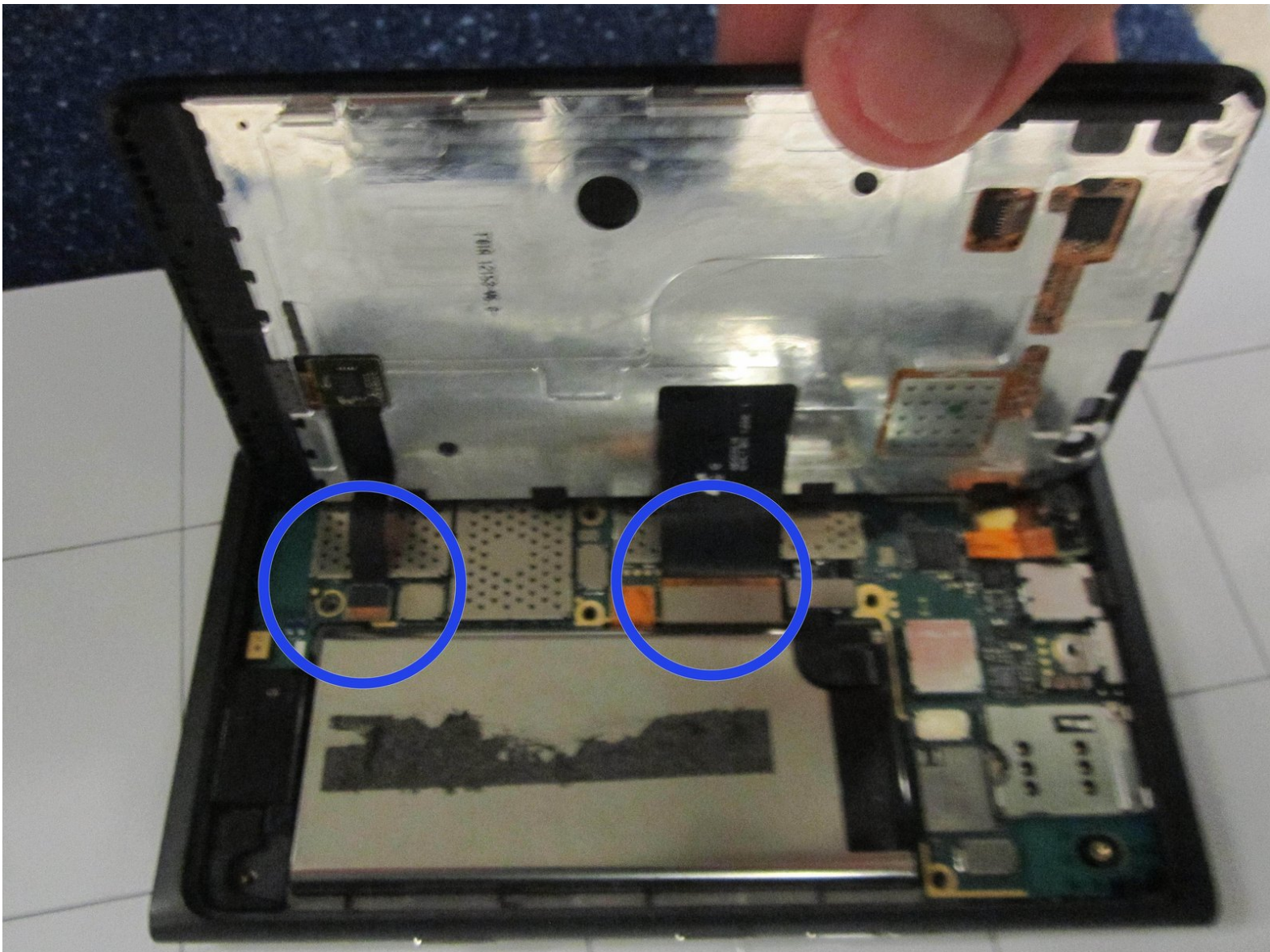




# Nokia Lumia 900 Battery Replacement

This guide will aid you in replacing your battery.

Written By: Joshua Crosman

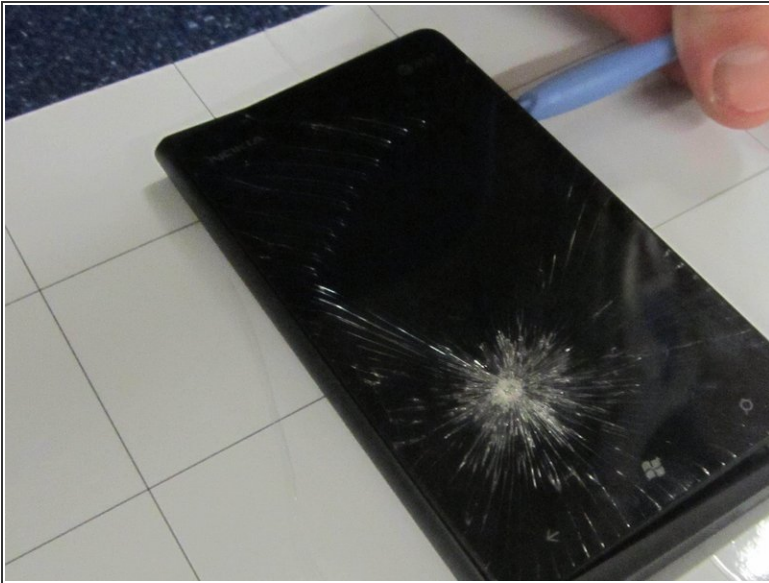




## TOOLS:

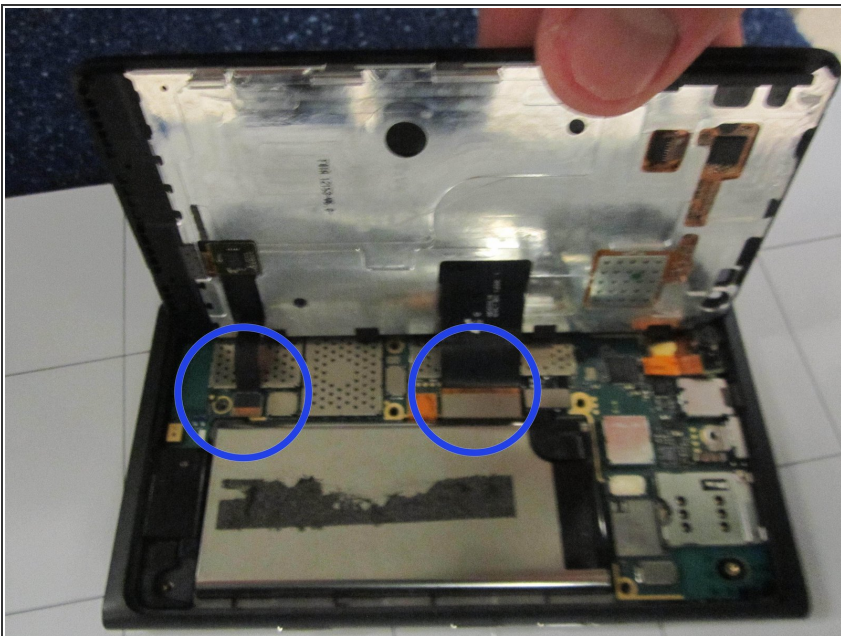
- [iFixit Opening Tools](#) (1)
-

## Step 1 — Opening The Phone



- Remove the Sim card tray and locking bar, before applying pressure to to the top right corner of the plastic casing.
- Using the opening tool, pry the screen from the casing until they are separated from each other.

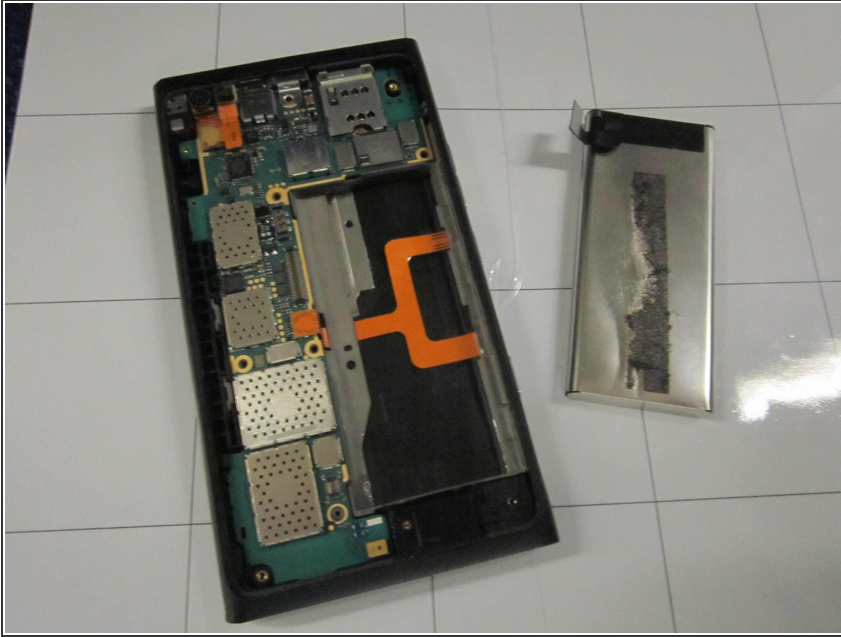
## Step 2 — Remove Old Battery



- Detach connector A from the phone.
  - Use the opening tool to pry out battery from the phone.
- ⓘ The battery should come out fairly easily



### Step 3 — Installing New Battery



- Place the battery in the empty battery slot
- Attach connector A to the battery terminal.

### Step 4 — Reassembling The Screen



- Slide the hinges of the left side of the screen under the left side of the plastic case
- Clamp the right side of the screen down and make sure screen is flat
- The screen should "click" into place