



Blackberry Torch 9810 Rear Facing Camera Replacement

After finishing your guide, your broken camera should not be a problem!

Written By: Jocelyn Adorno



INTRODUCTION

If your Blackberry Torch smartphone (model 9810) is a broken or has a shattered front-view camera (also known as the selfie camera), use this guide to replace the rear facing camera.

Before starting this project you should completely power off your device, disconnect from any external power source, and carefully inspect your device to ensure that is free of any dirt and debris.

Warning if your screen is cracked or damaged it maybe the cause of a nonfunctional front-view and will need to be replaced instead of the actual camera.



TOOLS:

- [T4 Torx Screwdriver](#) (1)
 - [iFixit Opening Tool](#) (1)
 - [T6 Torx Screwdriver](#) (1)
 - [Phillips #0 Screwdriver](#) (1)
-

Step 1 — Remove Cover



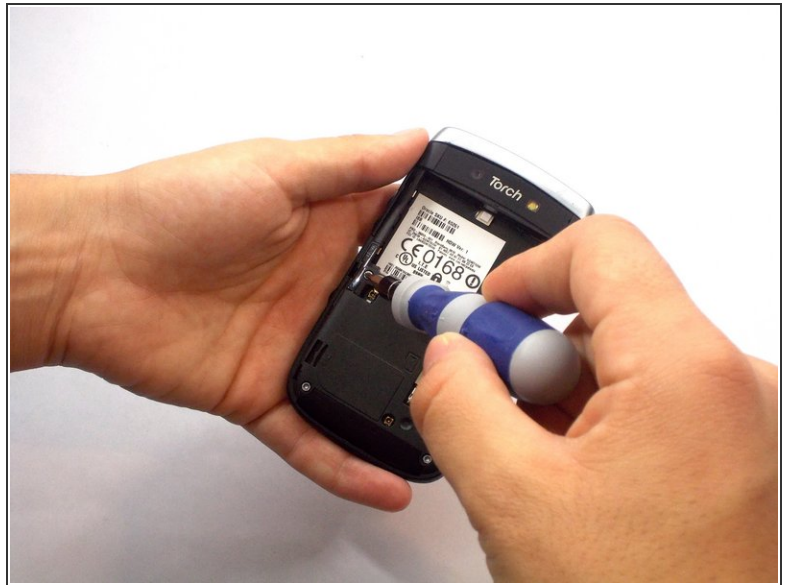
- Remove the back cover of the phone

Step 2 — Remove Battery



- Remove the battery
- ❗ Our phone did not come with a battery. This is where it would be located.

Step 3 — Unscrew Screws



- Unscrew the four screws using the T6 screw driver

⚠ If you remove the screw in red, you void the warranty!

Step 4 — Wiggle Wiggle



- Remove front silver trim by using plastic opening tools and wiggle it off.

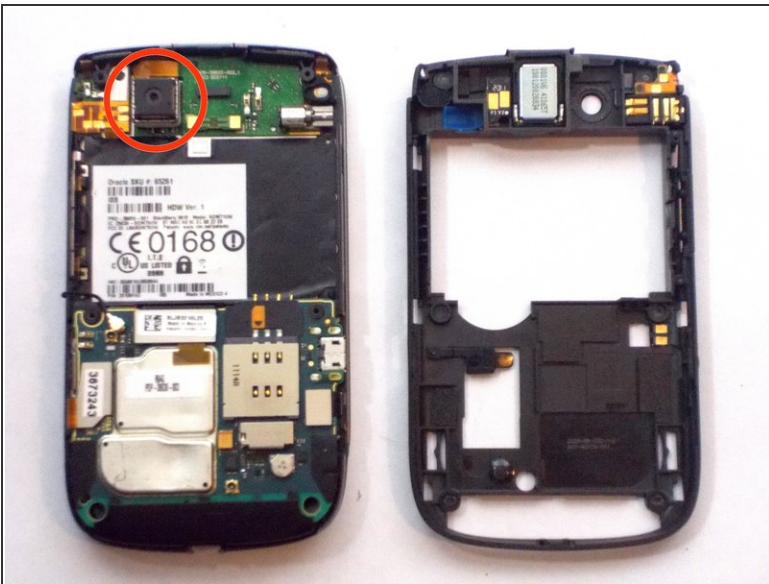
⚠ (This is a little difficult to remove) Pull the bottom upward and pull the top downward.

Step 5 — Smaller Screws That Must Go



- Once you remove the rim cover, you should find two more screws on the top. Unscrew them using the T6 screw driver.

Step 6 — Camera Sensor



- Use the Phillip screw driver to wiggle the camera sensor out.

 Carefully remove this

To reassemble your device, follow these instructions in reverse order.

This document was generated on 2022-03-06 08:31:36 PM (MST).

