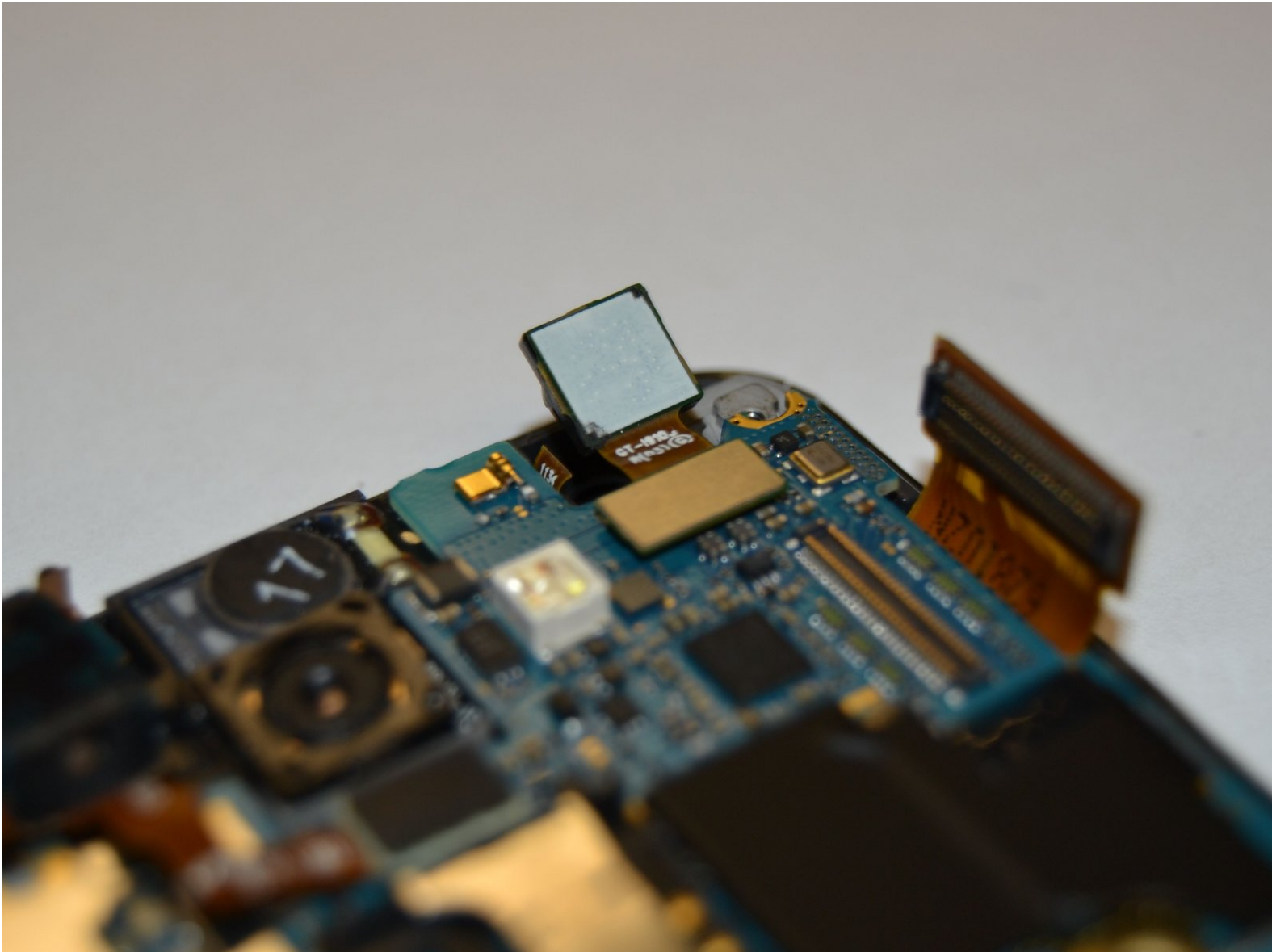




Samsung Galaxy R Front Facing Camera Replacement

This guide will show how to replace the front-facing camera.

Written By: Keon Horahan



INTRODUCTION

The front-facing camera is used for taking "selfies" and other pictures that the photographer will be in. If you consider yourself an avid Snapchatter or Instagramer, then it is essential to have an operating front-facing camera. The camera can be accessed without removing the motherboard and its attached to the motherboard by a clip. It can be replaced by lightly pulling on the camera to unlatch the clip.



TOOLS:

- [Phillips #0 Screwdriver](#) (1)
 - [Spudger](#) (1)
 - [Tweezers](#) (1)
-

Step 1 — Rear Case



- Insert your fingernail or a plastic tool into the opening near the headphone jack on top of the phone.
- Gently pry apart the rear case from the midframe and remove.

Step 2 — Battery



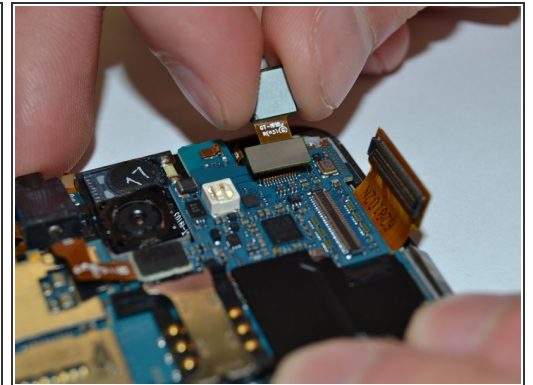
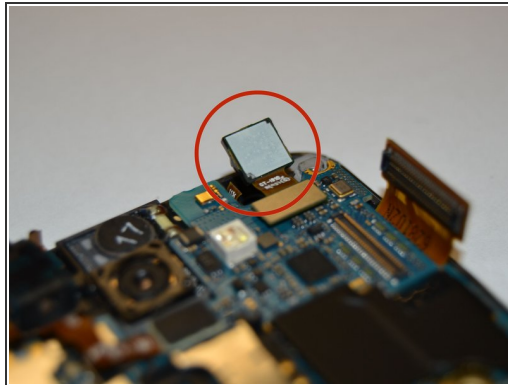
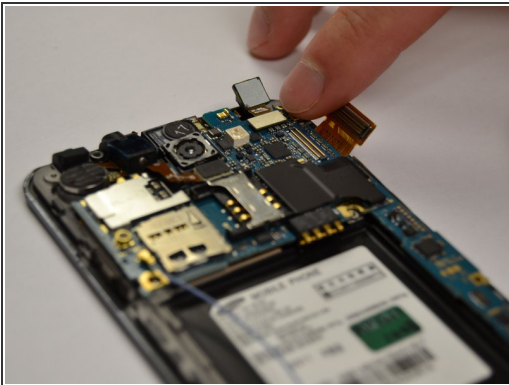
- Insert your fingernail, or a plastic tool, into the crevice on the lower left side of the back side.
- Gently pry the battery from the back of the phone.

Step 3 — Remove screws



- With the Phillips head screwdriver, remove all seven 4.0 mm screws, highlighted in red, from the rear case.
- Insert your finger or an opening tool underneath the midframe and gently pry apart from the phone.

Step 4 — Front Facing Camera



- The front facing camera is located in the top right corner of the back of the phone.
- To remove the camera, gently pull until it detaches from the motherboard.

To reassemble your device, follow these instructions in reverse order.