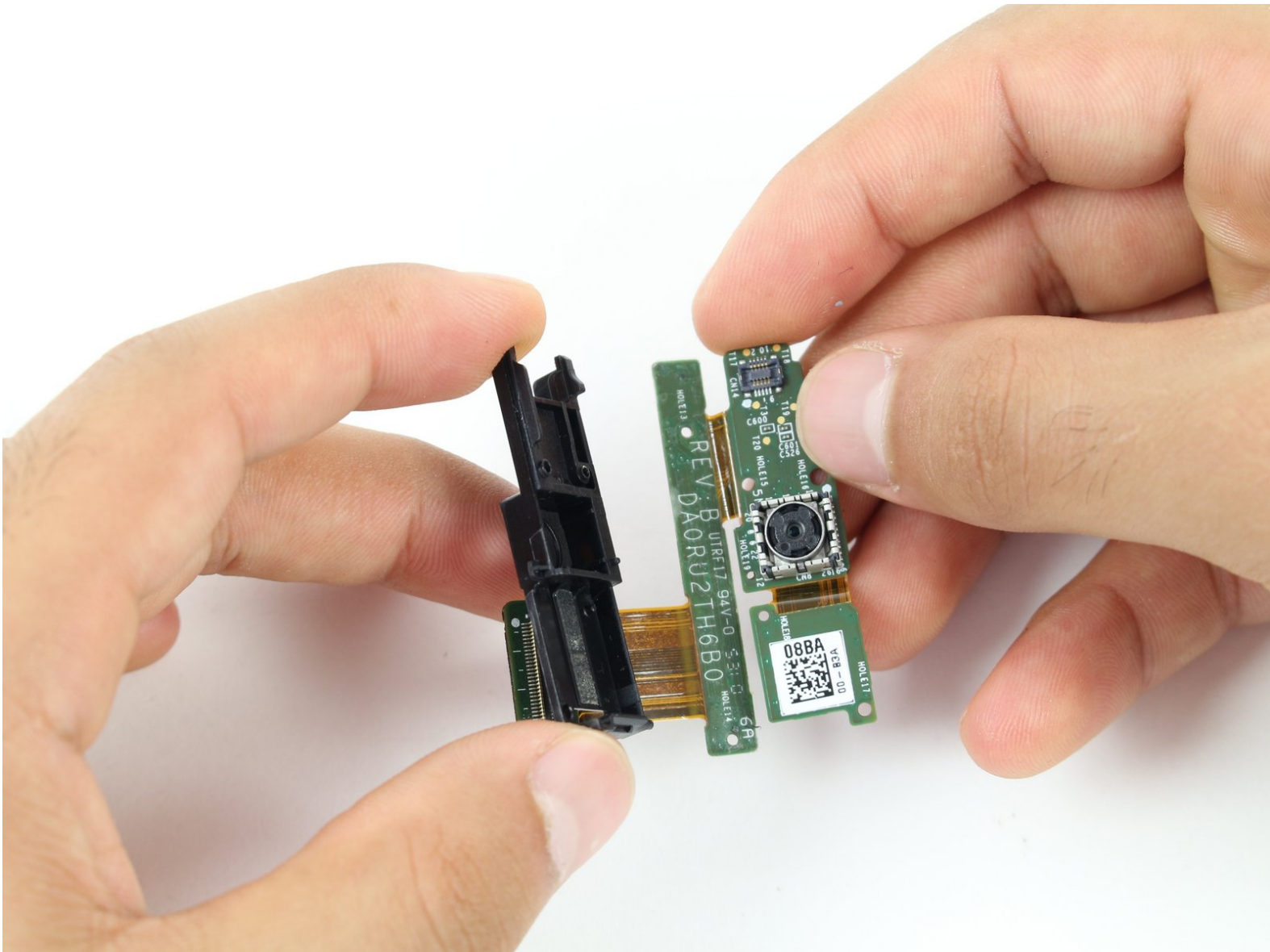




# BlackBerry PlayBook Camera Replacement

Take pictures again by replacing the device's cameras.

Written By: Nathan



---

## INTRODUCTION

Both front and back cameras are connected as a single assembly and must be replaced together.

---



### TOOLS:

- [Spudger](#) (1)
  - [Phillips #000 Screwdriver](#) (1)
  - [iFixit Opening Tools](#) (1)
  - [Tweezers](#) (1)
-

## Step 1 — Remove Back Panel



- Use a plastic opening tool to pry the back panel off by inserting it in between the front and back panel.
- ⓘ There are clips that need to be released on all four sides of the device.
- ✦ When replacing the back cover insert the bottom side first (usb and hdmi ports stick out about 2mm ) inserting them into the covers openings will allow for easier reassembly

## Step 2 — Motherboard



- Remove the battery connector using either your fingers or a pair of tweezers.

## Step 3



- Unscrew two 1.17x2.9mm Phillips screws from the white connector port.
- Lift the battery connector away from the motherboard using a spudger.



## Step 4



- Remove the [flat-top connector](#) coming from across the camera assembly with a spudger.

## Step 5



- With the spudger, remove the [flat-top connector](#) coming from underneath the motherboard.

## Step 6



- Remove the [clipped ZIF data connector](#) coming from underneath the motherboard.
- Lift up the black plastic clip with a spudger.
- Pull the connector out gently using tweezers.

**⚠** Be careful to ensure that the black plastic clip has been lifted away from the connector ribbon before pulling on the connector. The clip should be loose and easy to wiggle. Removing the connector before it is unclipped can cause damage.

## Step 7 — Unscrew Motherboard



- Remove the following five screws from the motherboard.
- Three 1.5x2.5mm Phillips screws
- Two 1.55x2.38mm Phillips screws



## Step 8 — Remove Wire Leads



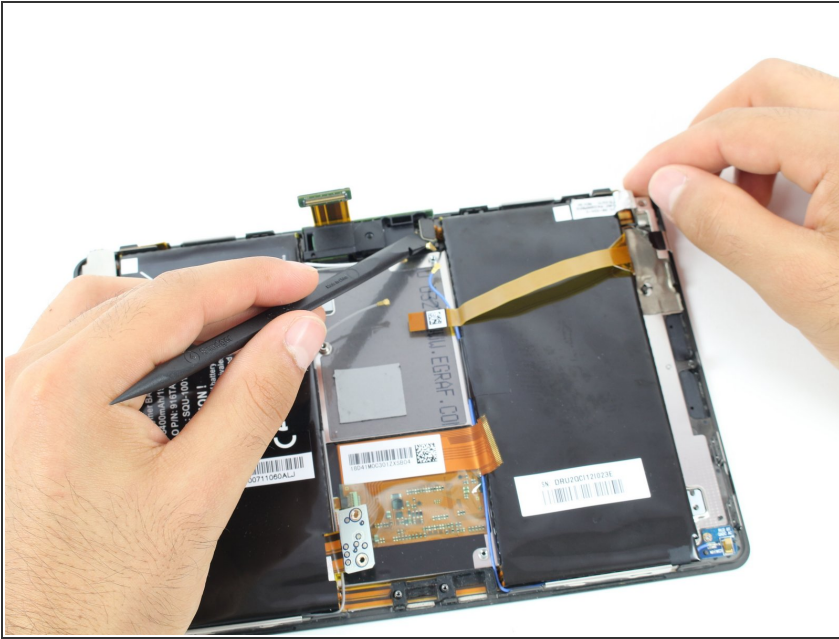
- Lift all four [antenna connectors](#) from the motherboard again using the spudger.

## Step 9 — Remove Motherboard



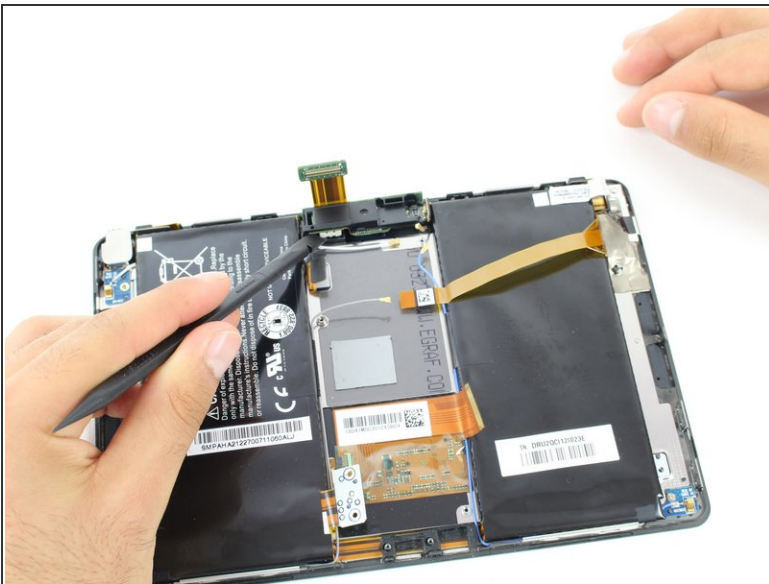
- Gently lift the motherboard away from the device. If there is any resistance, check the previous steps to ensure that all connections have been removed.

## Step 10 — Camera



- Use a spudger to detach the [flat-top connector](#) from the camera assembly.

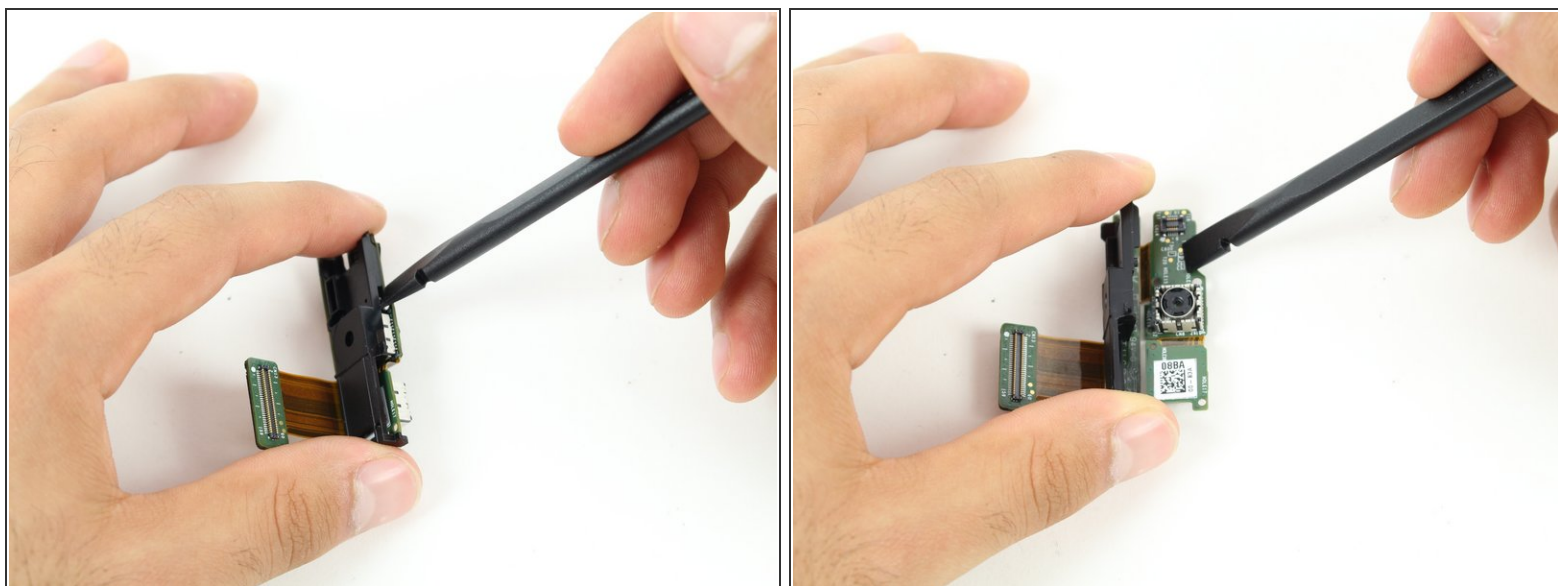
## Step 11 — Remove Camera Assembly



- Pry the camera assembly away from the device, lifting the left side with a spudger.
- ⓘ There is a small hook on the right side of the assembly holding it in place. When removing the assembly, be sure to lift it from the left side in order to slide it out from under this hook.



## Step 12 — Detach Plastic Frame from Cameras



- Insert spudger between the plastic frame and circuit board.
- Gently pry the plastic frame away from the rest of the camera assembly.

To reassemble your device, follow these instructions in reverse order.