



# LG 32CS560 Power Supply Board Replacement

Use this guide to replace the power supply board inside the LG 32CS560.

Written By: Coyt Barringer



## INTRODUCTION

Replacing the power supply board inside the LG 32CS560 is a simple task to complete with the proper preparation. It involves opening up the TV, identifying the bad power supply board, removing it, adding a new power supply board, and re-assembling the TV.

Note, only replace the power supply board if you know it is the cause for your TV's problems. If the TV doesn't turn on or only the LED's on the front of the TV turn on, then the power supply is likely to blame. Use the troubleshooting guide to help you determine if you need to replace the power supply board. Also, an annoying wining noise or burn marks on the power supply board indicate it has failed.

Please have a replacement power supply board ready to go as well. The model of power supply is the LGP32-12P. You can purchase it from numerous sites such as eBay [here](#).



### TOOLS:

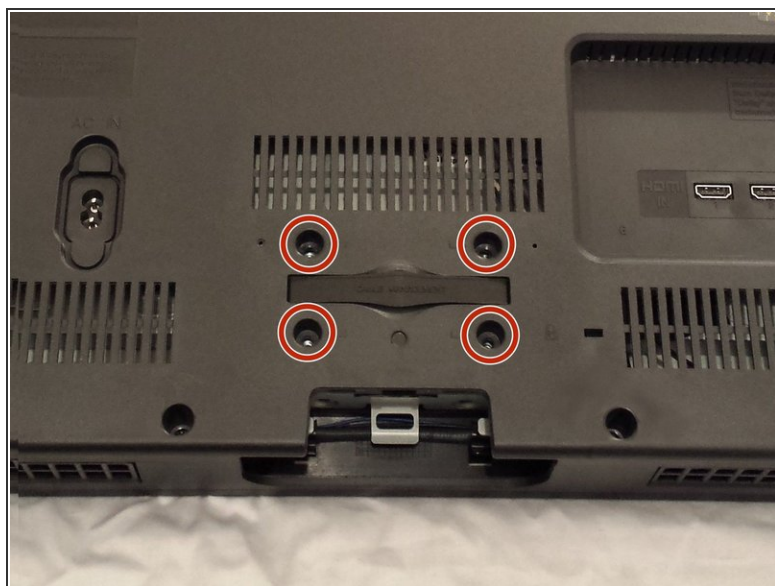
- [Phillips #2 Screwdriver](#) (1)



### PARTS:

- [LGP32-12P Replacement Power Supply Board](#) (1)

## Step 1 — Prepare your LG 32CS560 for disassembly



- Lay the TV face down on a soft surface
- Remove the base of the TV by unscrewing the 4 base screws.
- ⓘ There is no base on the picture, the position of the base is marked whit the red box.

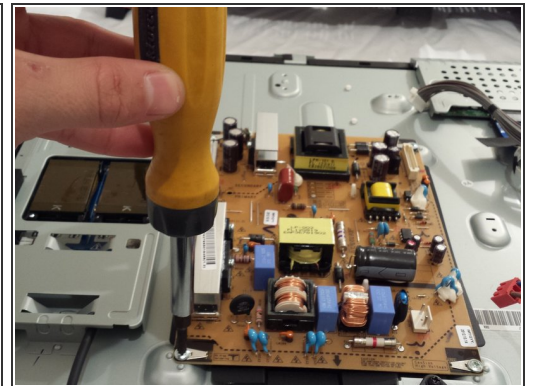
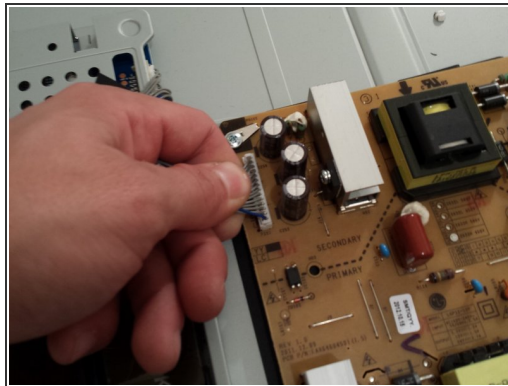
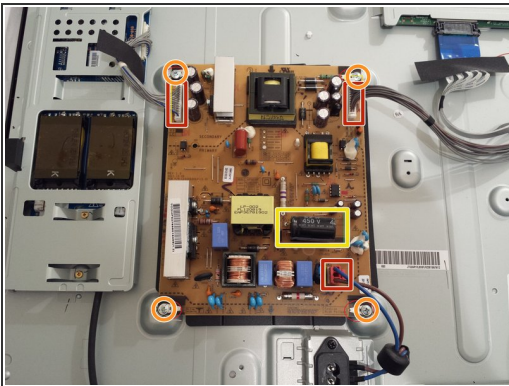


## Step 2 — Disassemble the LG32CS560



- Remove the 15 Phillips head screws on the back of the TV.
- Carefully remove the black plastic back panel of the TV to expose the electronics inside

## Step 3 — Disconnect & Remove the Bad Power Supply Board



- Carefully disconnect the three wire bundles attached to the power supply.
  - Remove the four screws holding the power supply in place.
  - Now you can lift out the Power Supply Board.
- i** If the black cylindrical component marked with yellow seems to have expanded or is leaking liquid or goo, then the power supply board is definitely bad.

To reassemble your device, follow these instructions in reverse order.