



Marineland Emperor 400 Power Filter Spray Bar Replacement

This guide will show you how to replace cracked, damaged, or malfunctioning spray bars on your Emperor 400.

Written By: Tyler Oswald



INTRODUCTION

This guide will show you how to replace cracked, damaged, or malfunctioning spray bars on your Emperor 400. For simplicity, the guide uses pictures with the media filters and Bio-Wheels removed (These simply slide upward out of the device once the cover is removed). The filter is also not attached to an aquarium in this guide, however, this can all be done while the filter is still hanging on the back of your aquarium (unplugged).



TOOLS:

- [Pitcher \(optional\)](#) (1)



PARTS:

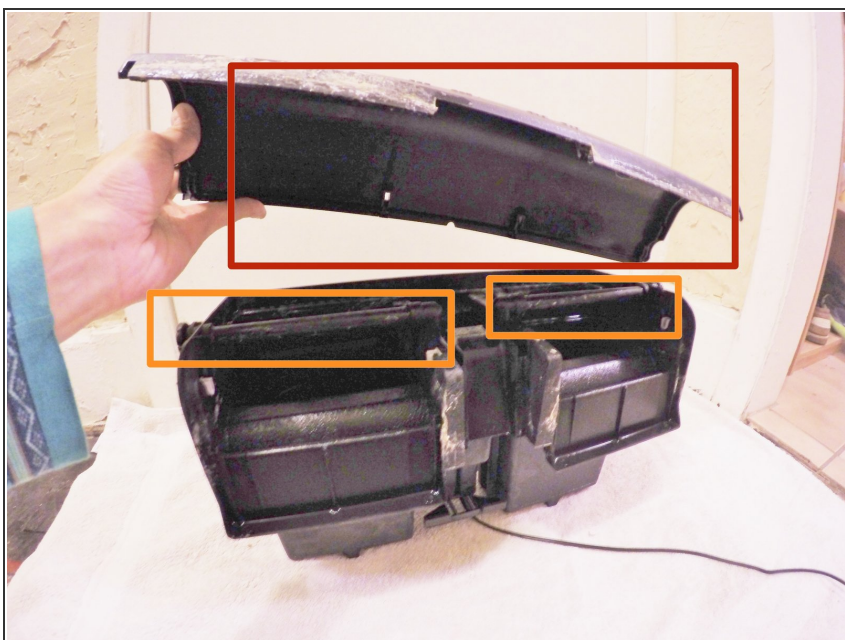
- [New Spray Bar\(s\)](#) (1)

Step 1 — Unplug Your Emperor 400



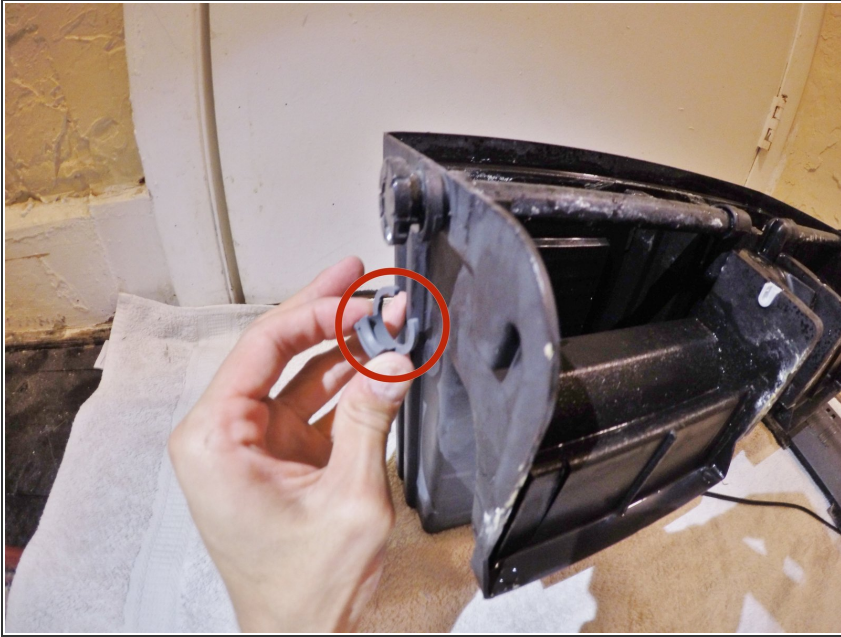
- First thing's first, unplug the device to avoid any unnecessary water spillage.

Step 2 — Remove the Cover



- Remove the Flow Manifold Housing Cover to gain access to the components of the Emperor 400. Simply lift up on the cover.
- The spray bars are located above the Bio-Wheels. They are horizontal cross bars with small holes for water to pass through.

Step 3 — Remove Safety Clip(s)



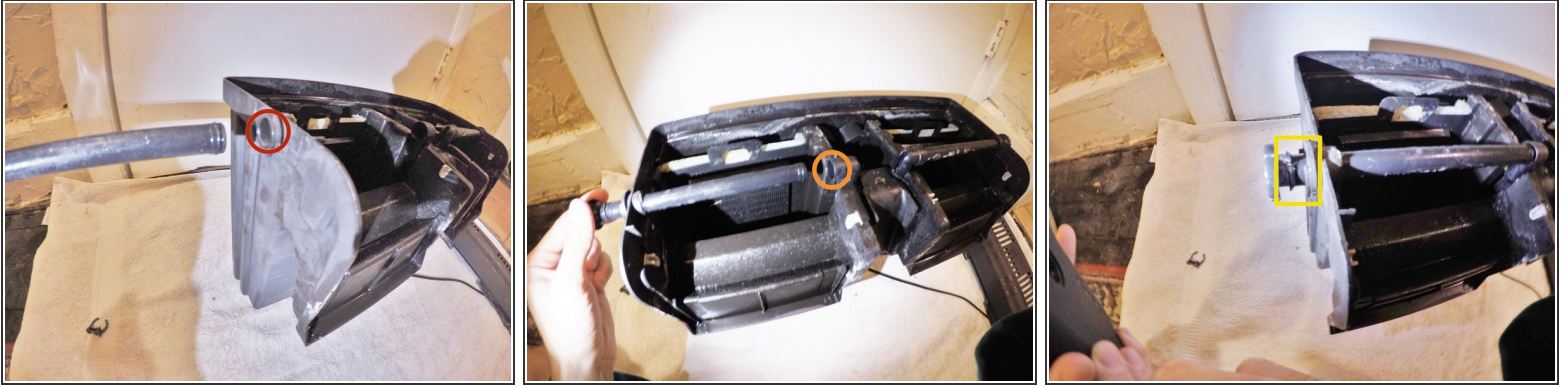
- Remove the safety clip(s). They are gray rings (the only non-black part of the outside shell) located on the outer ends of the spray bars. This will allow you to remove the spray bar(s), and assures that when the device is functioning, there will be no water leakage.
- ⓘ It takes a good amount of downward force to pry the clips off. They will snap off so be ready for it.

Step 4 — Slide Spray Bar(s) Outward



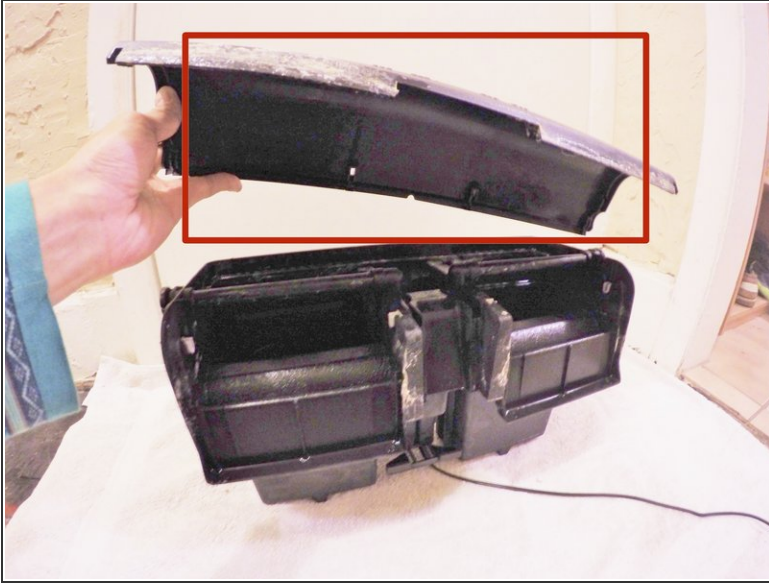
- Slide the damaged/broken spray bar(s) outward from the center of the device. This needs to be done one at a time.
- ⓘ A small twisting motion applied while pulling may allow the bar to slide out easier.
- A little extra force will have to be provided in order to pop the O-rings through the device's shell.
- ⓘ When popping the O-ring through, it may be wise to provide a counter pressure equal and opposite to the pressure/direction you are pulling the spray bar through. This may help avoid unnecessary stress on the frame. This can simply be done with a second hand on the corresponding side in which the spray bar is being removed.

Step 5 — Insert New Spray Bar(s)



- Insert the new, functional spray bar(s) one at a time through the openings for the bars on either side of the device.
- Slide the bar(s) all the way through to the other opening located in the middle of the device.
- ☞ When getting the O-rings through the outer openings of the device, it may be wise to provide a counter pressure opposite and equal to the pressure/direction you are sliding. This may help avoid unnecessary stress on the device. This can simply be done with a second hand applied to the corresponding side the spray bar is going through.
- Be sure when the spray bars are inserted that the holes in the bars are angled downwards. The ends of the spray bars have grooves to show that you are pointing them in the correct direction.

Step 6 — Place Cover Back on and Power On



- With the new spray bar(s) installed, the Flow Manifold Housing Cover can be put back on, and the device (with correct water level in it) can be plugged back in which will power it on automatically.
- ⓘ The filter relies on equalized water pressure to flow, so make sure an adequate amount of water is in the Emperor 400 before plugging it back in (Make sure water is treated and safe for aquatic life). A water pitcher is perfect for adding treatment and getting water back into the device.
- ⚠ The impeller in the Emperor 400 is meant to operate fully submerged under water. Operating the device dry may cause damage to the device's components. Make sure an adequate amount of water is in the device before operating again.

Follow these instructions for dis-assembly and re-assembly of the spray bars on your Emperor 400.