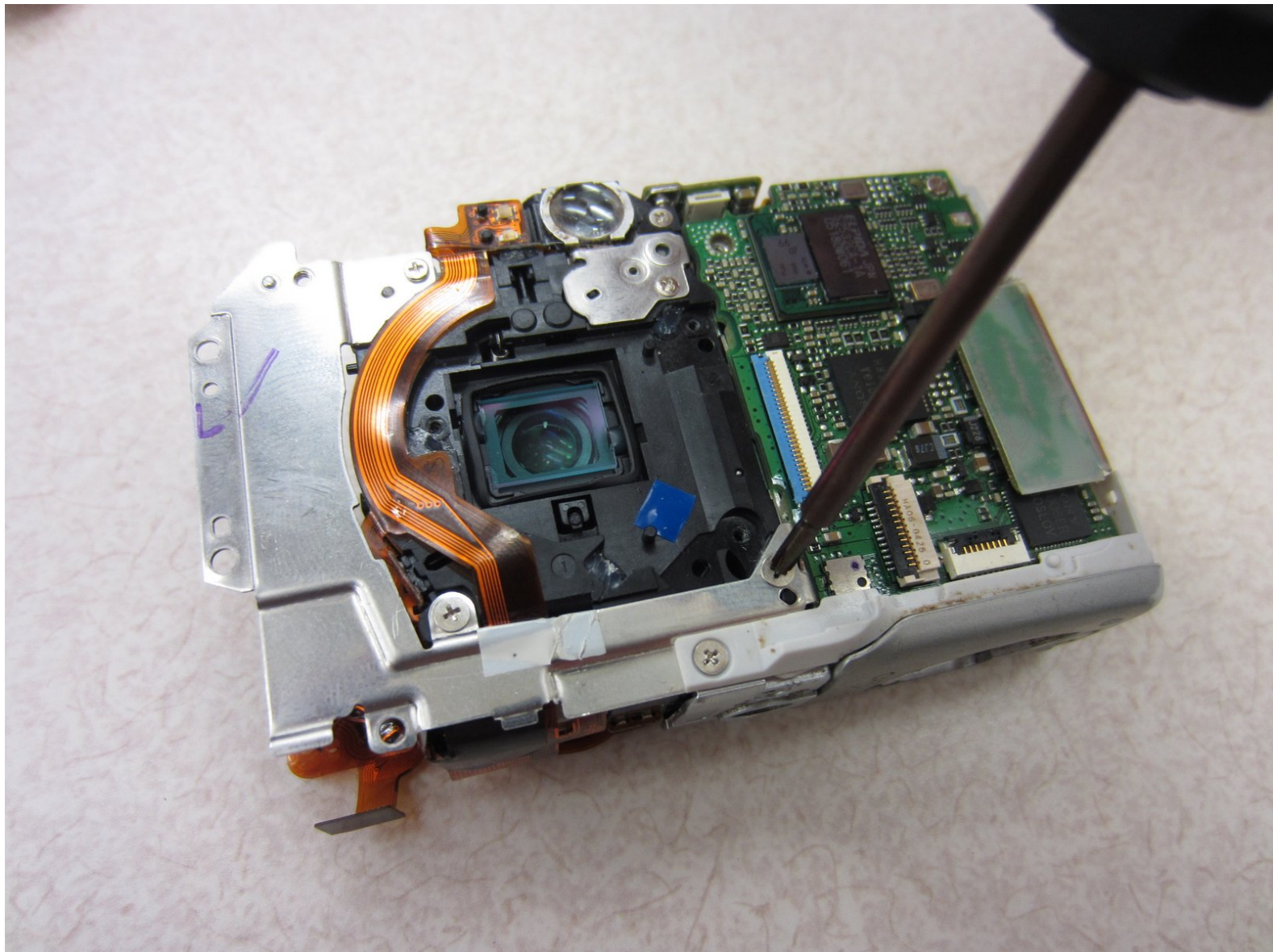




# Canon PowerShot SD500 Digital ELPH Zoom Lens Assembly Replacement

This repair guide will show you how to take apart the PowerShot SD550 and replace the zoom lens.

Written By: Taylor Shields



---

## INTRODUCTION

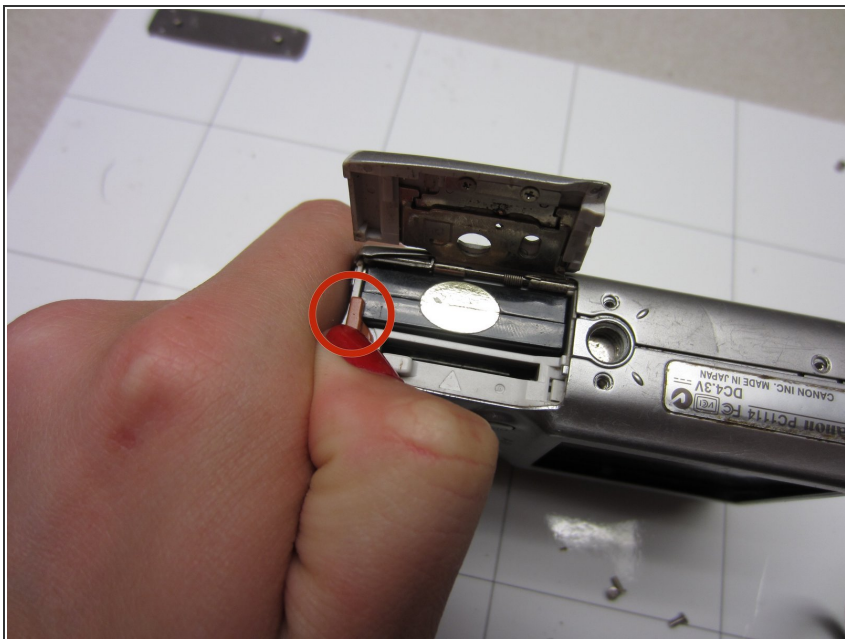
The lens is the device that focuses the image seen by a camera. Because it is the only moving part, it can easily malfunction, causing blurry pictures or even a camera error.



### TOOLS:

- [Phillips #00 Screwdriver](#) (1)
-

## Step 1 — Battery



- Slide open the battery cover.
- Push the small orange tab to the side so the battery can be removed.

## Step 2



- Slide the battery out of the battery compartment.

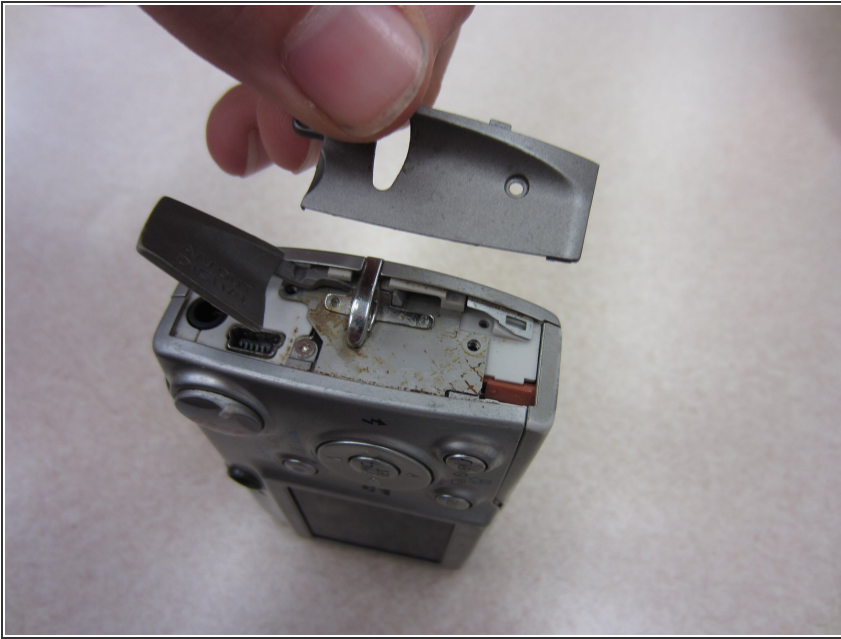


### Step 3 — Front and Rear Casing



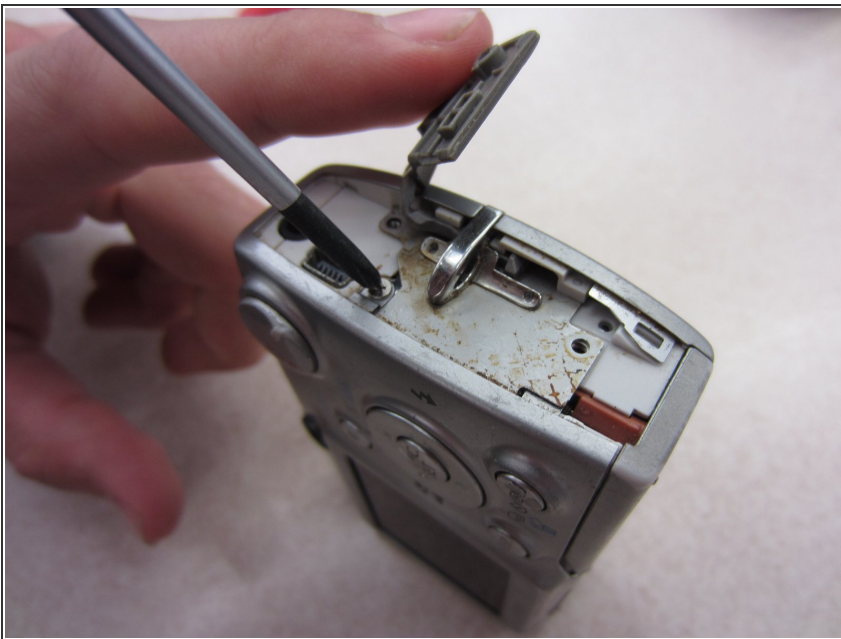
- Two Phillips screws need to be removed using a #00 Phillips screwdriver. The upper screw is under the USB port cover, which can simply be pulled away gently from the casing. the lower screw is visible on the panel.
  - The screws are different sizes. The .125 inch screw is located under the USB port cover. The 0.85 inch screw goes in the lower hole on the panel.
- i** When looking at the back of the camera, these two screws are on the right panel of the camera.

## Step 4



- Remove the right side cover from the camera casing.

## Step 5



- Remove a .07 inch Phillips screw using a #00 Phillips screwdriver.

## Step 6



- Remove two .085 inch Phillips screws from the left side of the camera using a #00 Philips screwdriver.

## Step 7



- Remove the left side cover from the camera.



## Step 8



- Remove three .15 inch Phillips screws from the bottom of the camera using a #00 Phillips screwdriver.

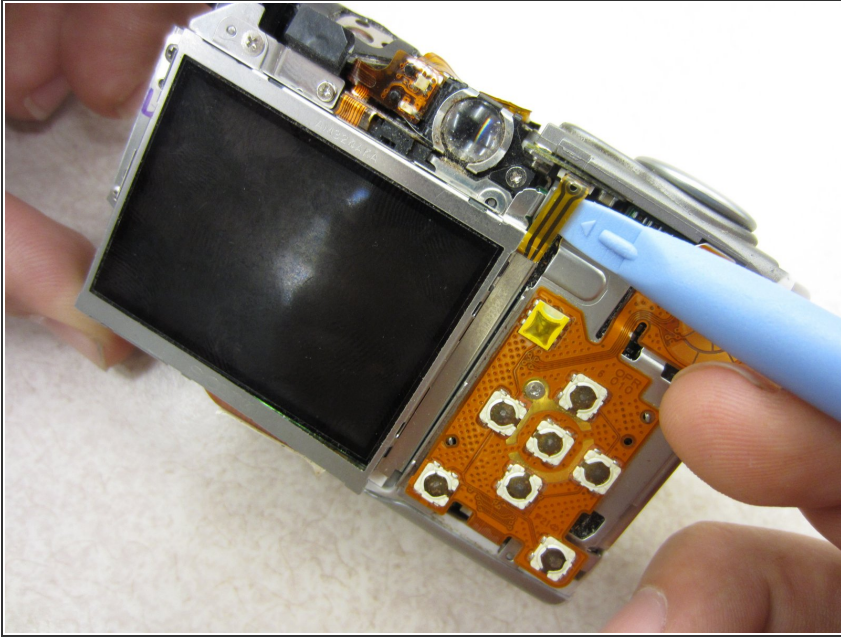
## Step 9



- Once the casing is unscrewed, hold the camera with one side facing down, and lift the opposite face of the casing to open it.
- Remove the internal camera components and layout out all pieces on a clean surface.
- ⓘ The front and back cover may require gentle rocking to remove.

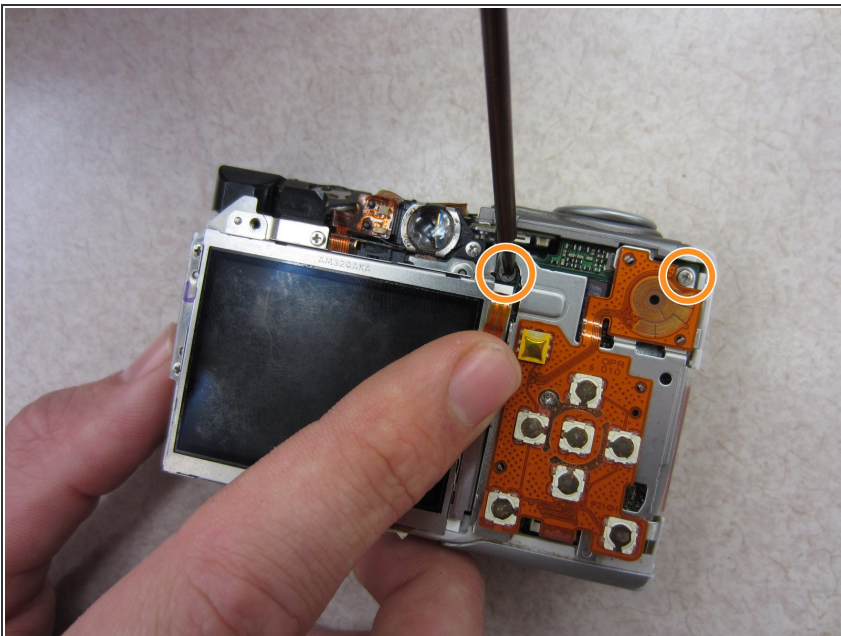
This document was generated on 2020-11-19 10:53:09 PM (MST).

## Step 10 — Button Contact Panel



- Carefully wedge the pry tool under the ribbon in the ribbon gate.
  - Gently remove the ribbon from the ribbon gate by pulling it away from the gate with the pry tool.
- ⚠ Be careful not to damage the ribbon.

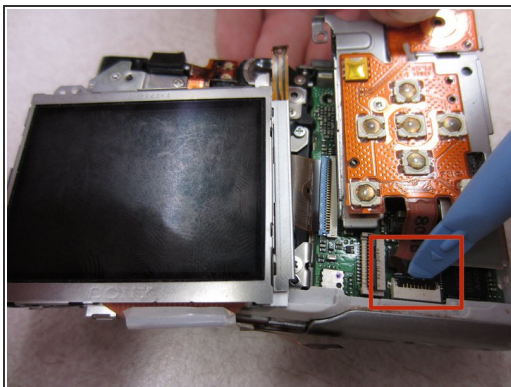
## Step 11



- Gently press the ribbon back to get access to a Phillips screw behind it.
- ⚠ Be careful not to damage the ribbon.
- Unscrew two .125 inch long Phillips screws using a #00 Philips screwdriver.



## Step 12



- Remove the ribbon with a pry tool by gently pulling it out of the ribbon gate tab.

⚠ Be careful not to damage the ribbon.

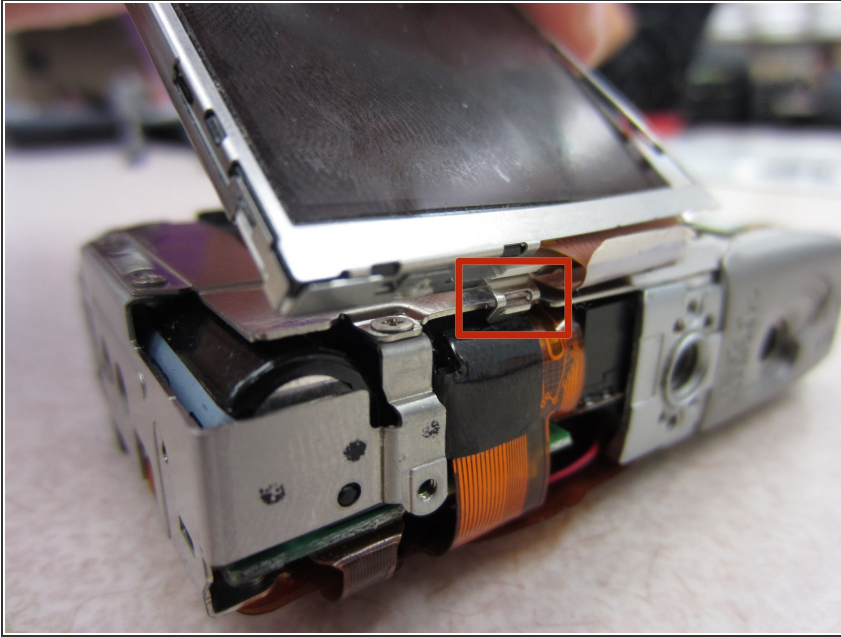
- Pull the button board away from the rest of the camera.

## Step 13 — LCD



- Unscrew one .113 inch Phillips screw using a #00 Phillips screwdriver.

## Step 14



- Lift the LCD screen up and away from the tab that holds it in place on the face of the camera.
- ⚠ Be careful, the LCD screen is still connect to the camera by a ribbon cable.

## Step 15

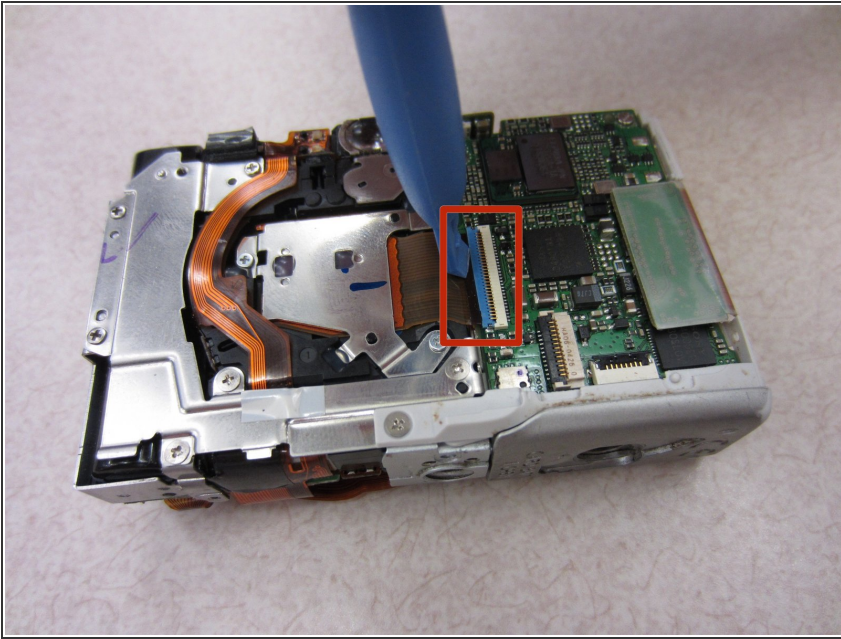


- Gently press the pry tool under the ribbon gate and lift up to free the ribbon connecting the LCD to the circuit board.
- ⚠ Be careful not to damage the ribbon.
- The LCD can now be completely removed from the camera.

This document was generated on 2020-11-19 10:53:09 PM (MST).

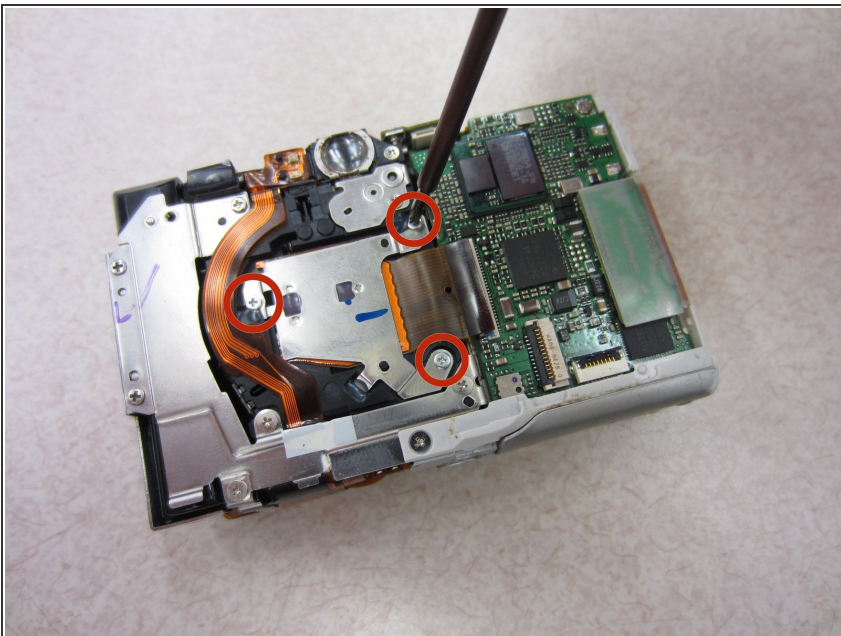


## Step 16 — Image Sensor



- Place the pry tool under ribbon gate and gently lift it up, disconnecting the ribbon.

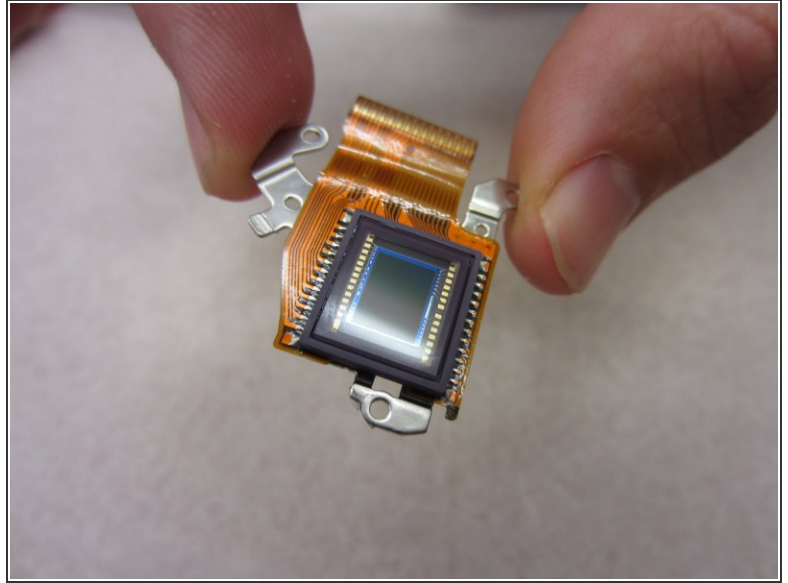
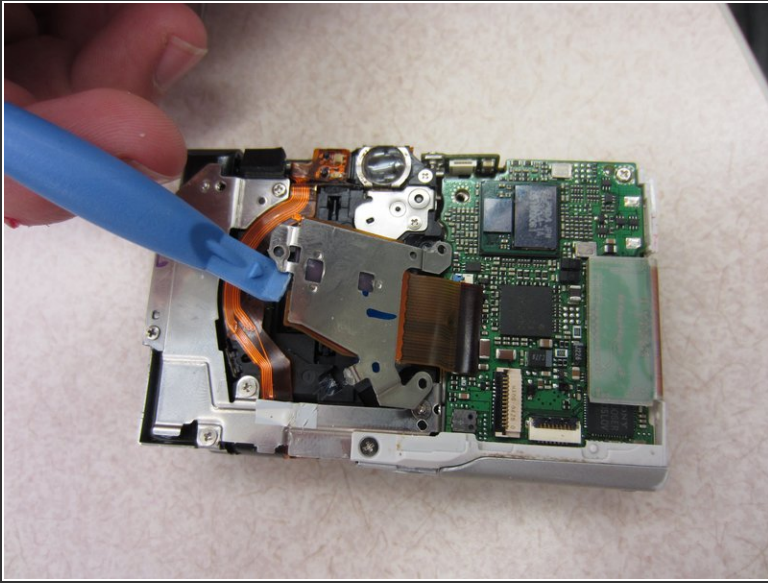
## Step 17



- Unscrew three .15 inch Phillips screws from the back of the camera using a #00 Phillips screwdriver.



## Step 18



- Use the pry tool to gently lift the image sensor away from the rest of the camera.

⚠ Be careful not to damage the image sensor as you pry it up.

## Step 19 — Flash Bulb Assembly



- Arrange camera so it is facing up towards you.
- Unscrew one .01 inch Phillips screw using a #00 Phillips screwdriver from the front of the camera.

## Step 20



- Gently remove the indicated ribbon from respective ribbon gates.
- ⚠ Be careful not to damage the ribbon.

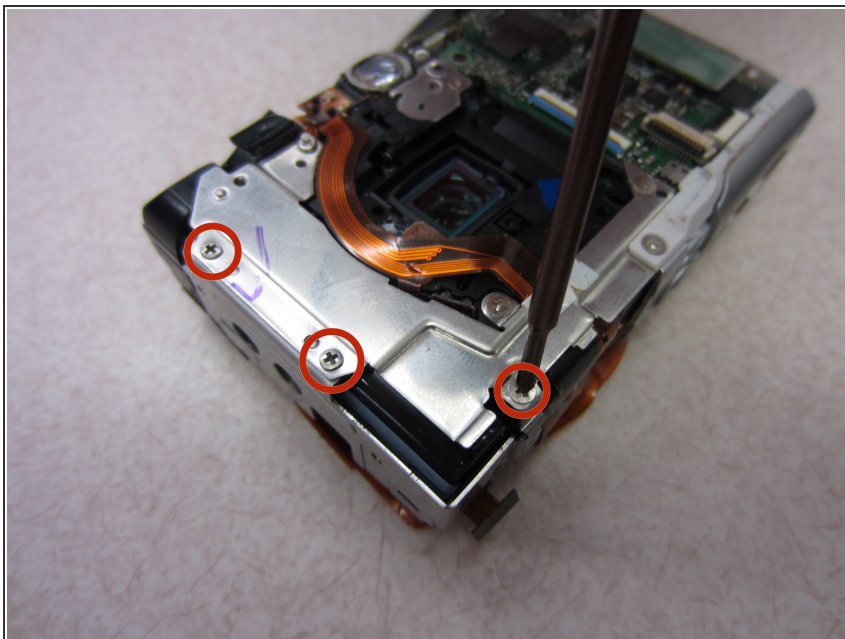
## Step 21



- Place spudger under white connector and gently lift it vertically out of its slot.
- ⚠ Be careful not to damage wire connector during removal.



## Step 22



- Unscrew three .065 inch Phillips screws using a #00 Phillips screwdriver from the back of the camera.

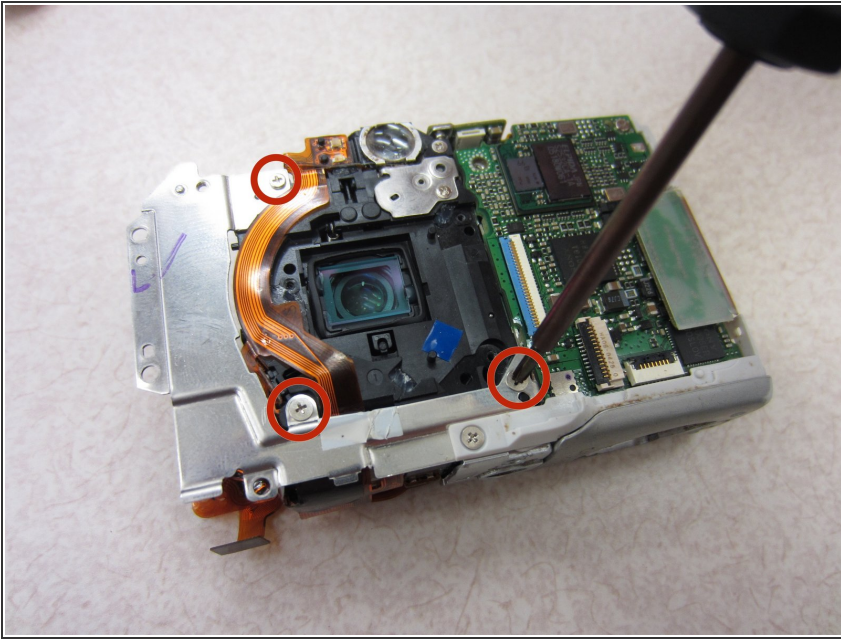
## Step 23



- Gently pull away flash bulb assembly from the rest of the camera.
- ⚠ Be careful not to damage the ribbon on the rest of the camera.

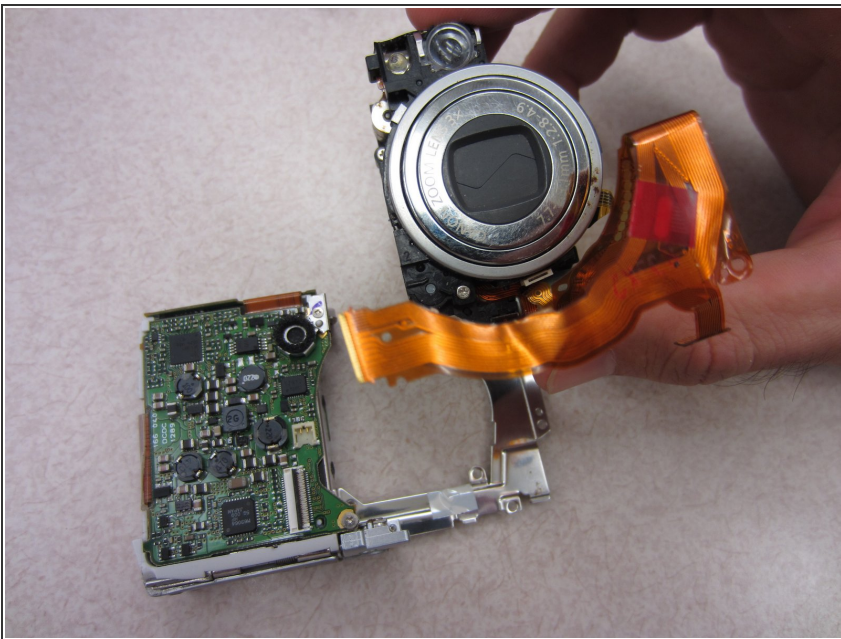


## Step 24 — Zoom Lens Assembly



- Unscrew three .12 inch long Phillips screws using a #00 Phillips screwdriver from the back of the camera.

## Step 25



- Gently remove zoom lens from the rest of the camera.
- ⚠ Be careful not to damage ribbon during removal.

To reassemble your device, follow these instructions in reverse order.