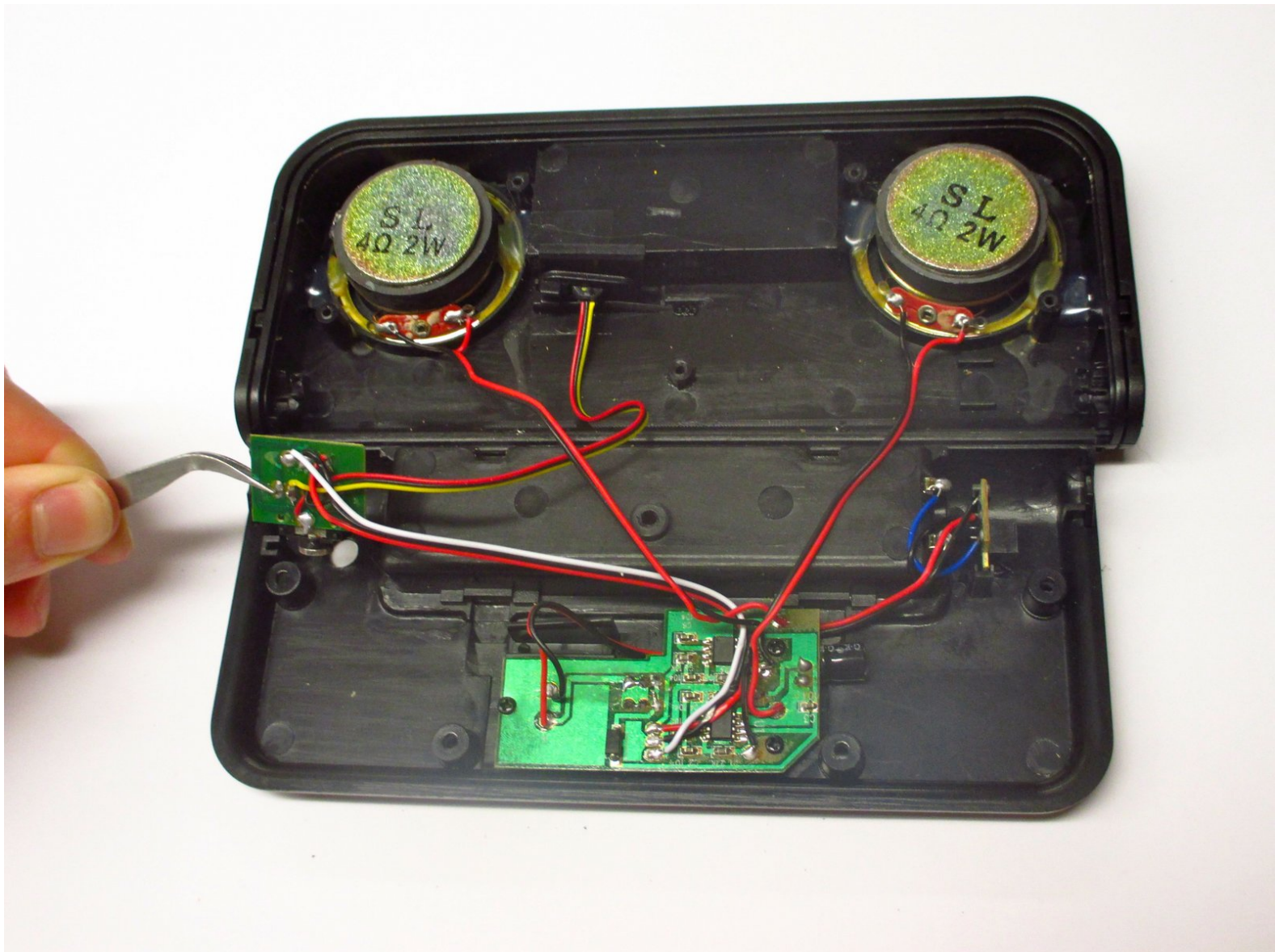




# iHip Fold-up Portable Speaker LINE IN ADAPTER Replacement

If the device has a LINE IN Adapter that is not functioning properly, replace it using this guide.

Written By: Amanda





## TOOLS:

- [Phillips #0 Screwdriver](#) (1)
- [Portable Soldering Iron](#) (1)
- [Soldering Wire](#) (1)
- [Utility Scissors](#) (1)



## PARTS:

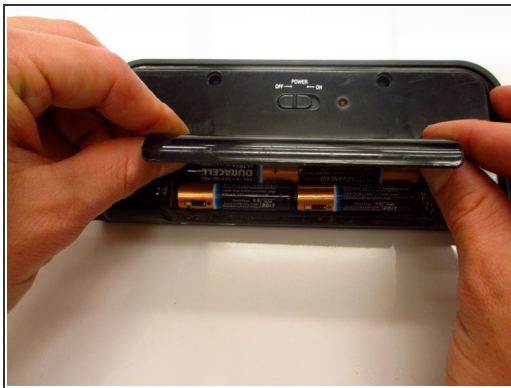
- [iHip Portable Speaker LINE IN Adapter](#) (1)

## Step 1 — Removing the battery case cover



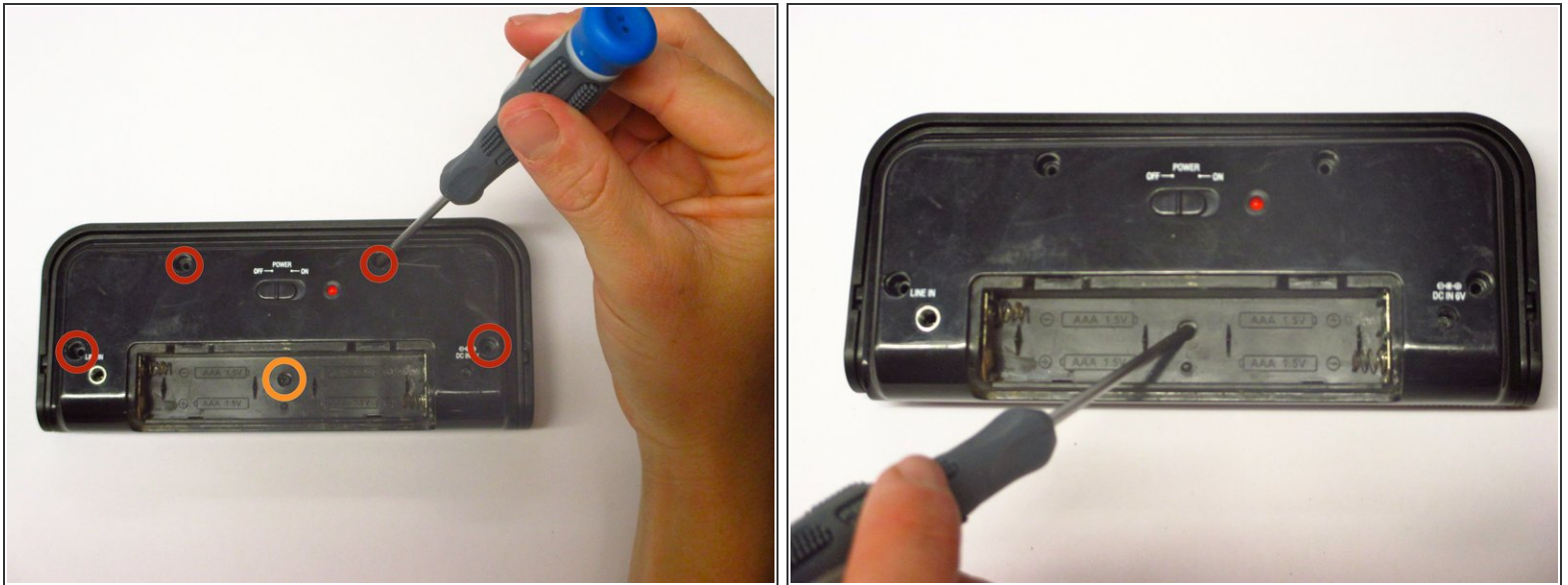
- Use your fingers to slide the battery case cover off in the direction of the arrows.

## Step 2 — Cleaning the battery case



- Remove the four AAA batteries. Be sure to check your nearest battery recycling point!
- ⓘ Use the detailing brush and a paper towel to remove any corrosion left by previous batteries.

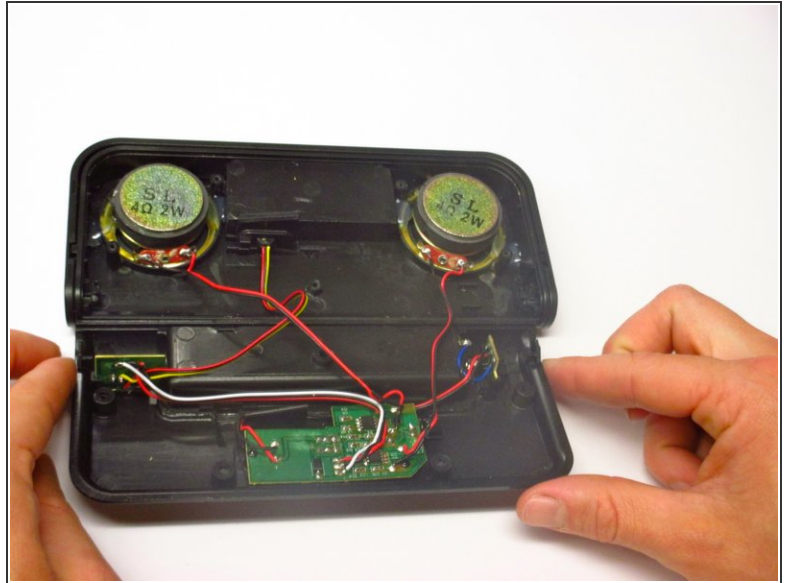
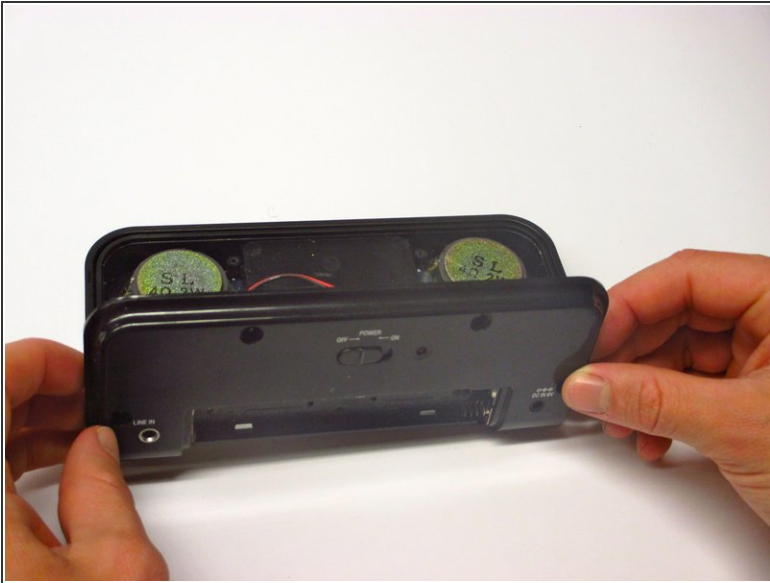
### Step 3 — Removing the screws



- Unscrew the four outer 1.0 mm screws with a Phillips-Head screwdriver.
  - ⓘ Screws will be magnetized in position and will require the use of tweezers to be removed.
- Push down gently on the battery case cover and slide it in the direction the arrows indicate. Remove the batteries.
- Unscrew the 0.6 mm screw located in the center of the battery case.
- Keep the 1.0 mm and 0.6 mm screws separate from each other for reassembly.

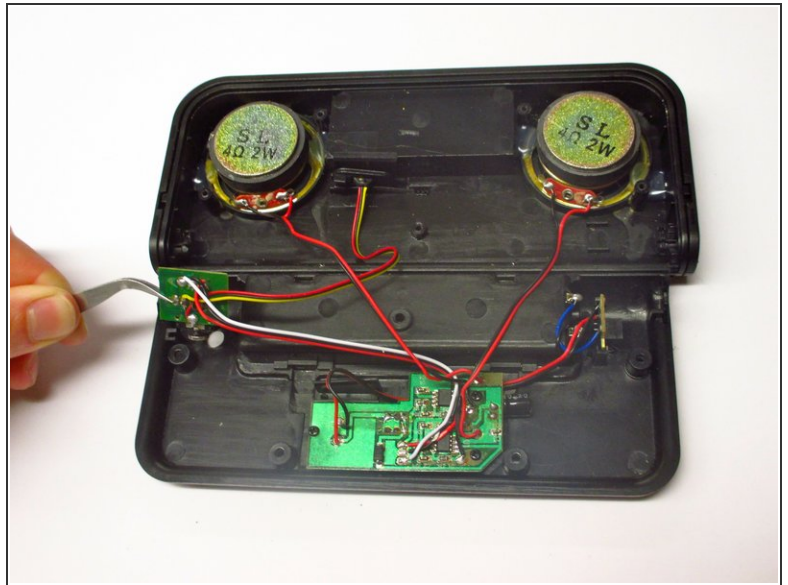
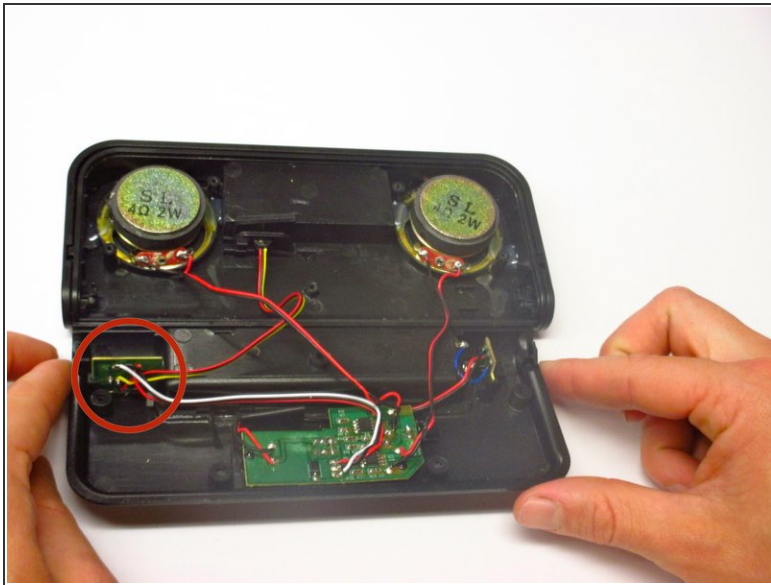


## Step 4 — Removing the back cover



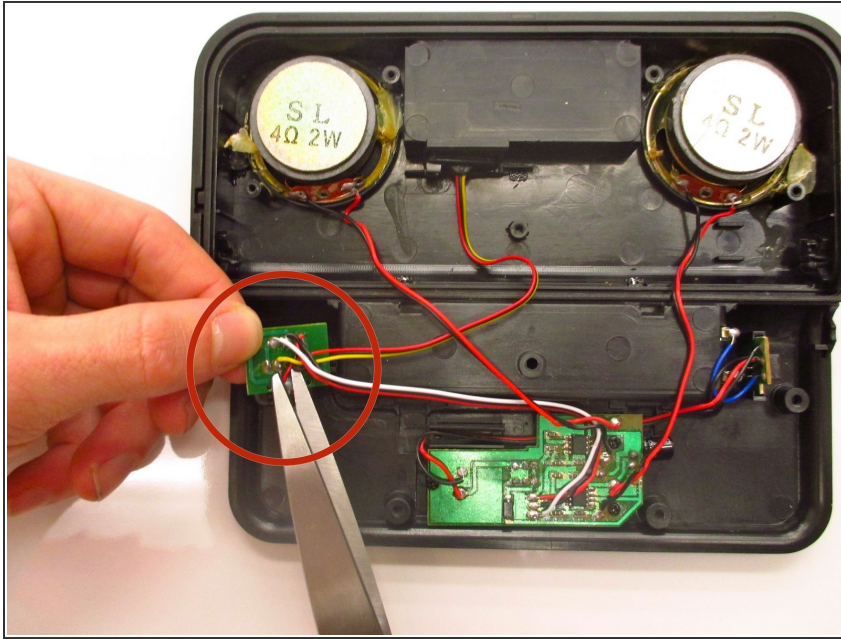
- Remove the back cover carefully; there are many wires that connect it to the device.

## Step 5 — Locating the LINE IN Adapter



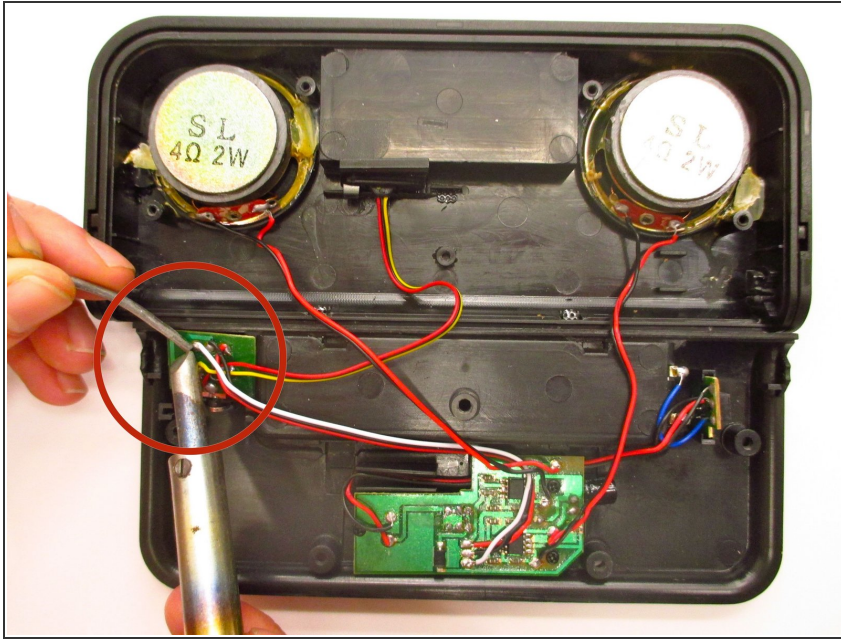
- Position the portable speaker device so that the back cover and the speaker are both laying flat, giving you access to the inside of the device
- If the motherboard is at the bottom when you are looking down at the device, the LINE IN adapter should be on the left side of the back cover
- Carefully remove the LINE IN adapter using a pair of tweezers

## Step 6 — Removing the Adapter



- Remove the black and red wires attached to the LINE IN adapter that extend from the motherboard by cutting them with scissors
- Repeat previous step for the blue and second black wire connecting the adapter to the battery case.
- At this point, you should be able to carefully remove the entire faulty adapter and the wires.

## Step 7 — Assembling the New Adapter



- Position the newly purchased LINE IN adapter and wires in place
- Using a soldering iron and soldering wire, reattach the red and black wires that extend from the motherboard to their original position on the LINE IN adapter
- Use the soldering iron and soldering wire again to reattach the black and blue wires that extend from the battery case to their original position on the LINE IN adapter
  - The blue wire should attach on the bottom of the battery case and the black wire on the top insertion.
- The new LINE IN adapter should now be properly assembled in place with the wires connected to their proper location.

To reassemble your device, follow these instructions in reverse order.