



# Sony XPERIA Tablet Z SIM and SD card reader Replacement

Written By: Martin Luna





## TOOLS:

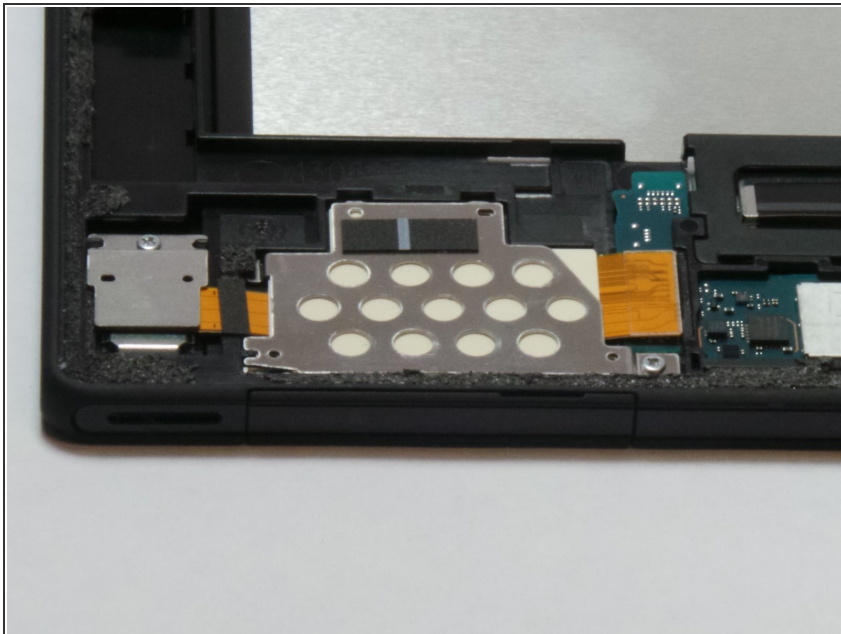
- [Phillips #00 Screwdriver](#) (1)
  - [iFixit Opening Tools](#) (1)
  - [Tweezers](#) (1)
-

## Step 1 — Removing cover



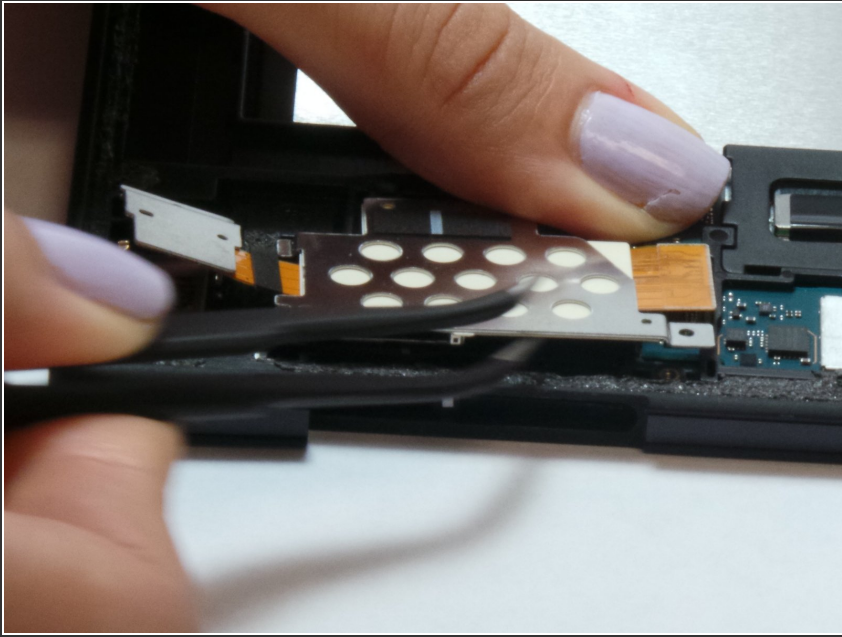
- Tools you will need is the Phillips #00 precision screwdriver, Plastic Opening Tools, and tweezers.
- Insert plastic opening tool in the corner of device and slide along edges to separate adhesive
- Remove cover

## Step 2 — locating the SD card reader



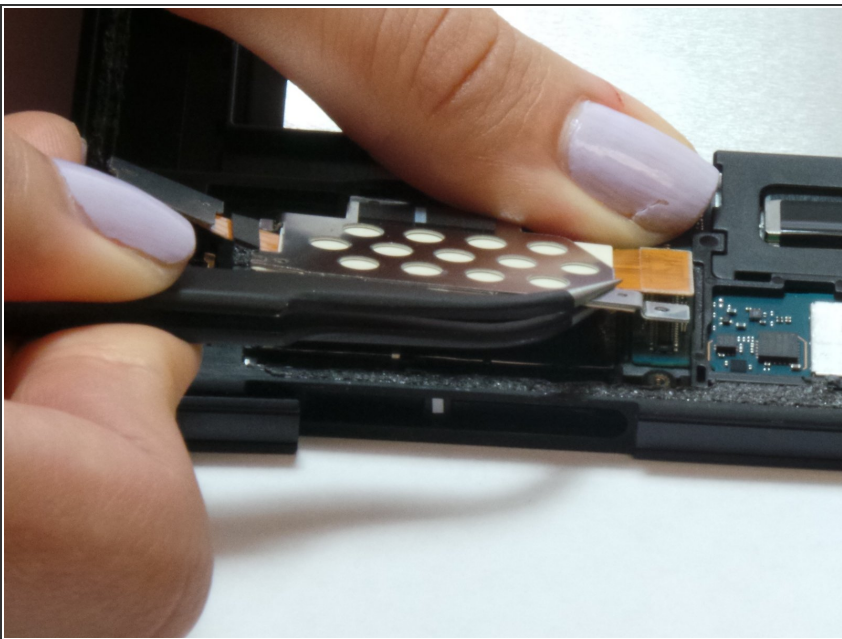
- Locate the SD card reader in the bottom left hand corner
- Remove all screws connecting the metal plate to the device.

### Step 3 — Lift up



- After all the screws have been removed lift the circuit board up to wiggle free.

### Step 4 — Disconnecting electrical tape.



- After Wiggled free place the tweezers on the piece of electrical tape connecting it to the device.
- Once placed there lift up and disconnect the SD card reader from the device.

To reassemble your device, follow these instructions in reverse order.