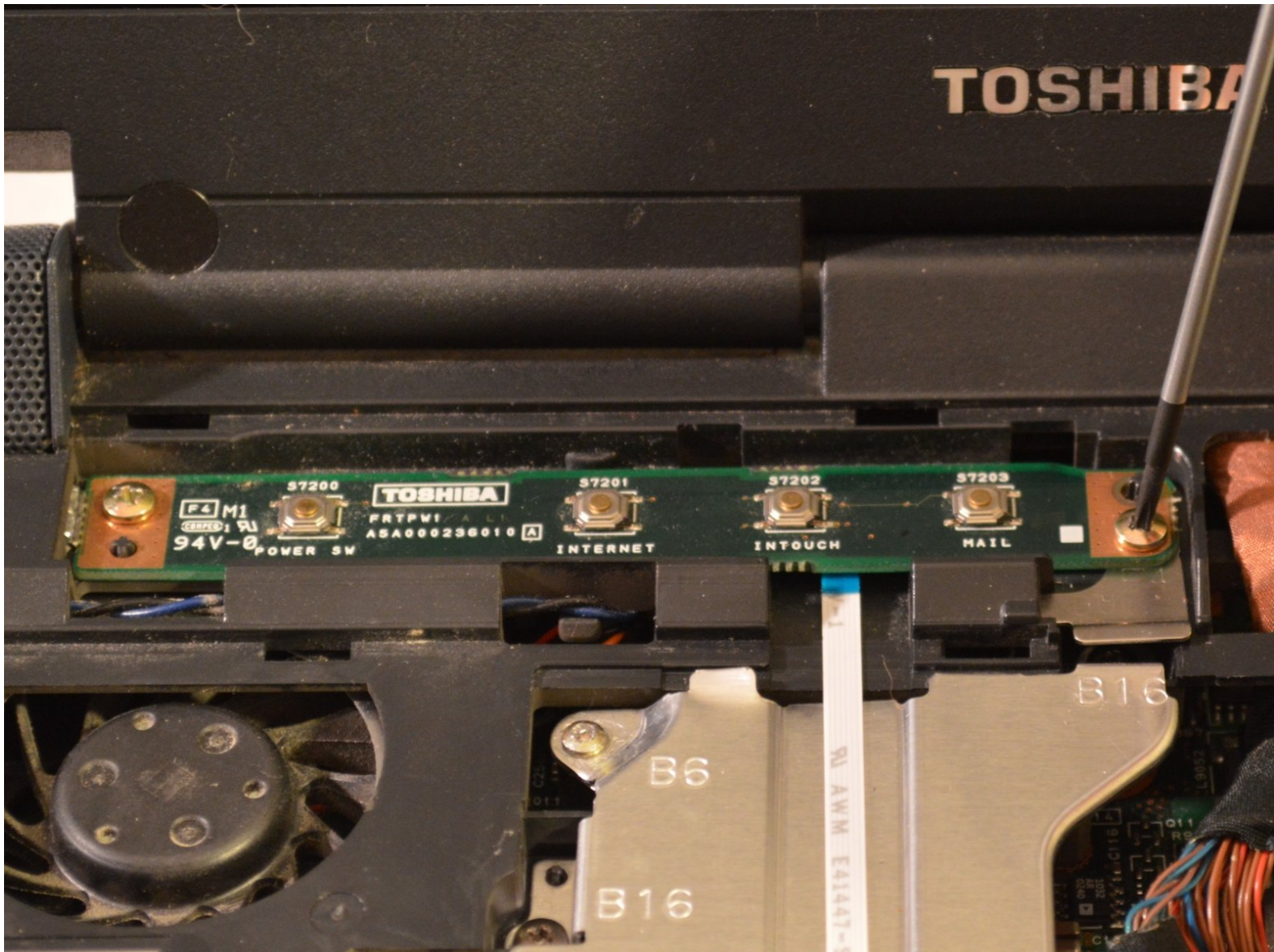




Toshiba Satellite 1415-S105 Power Button Circuit Board Replacement

Replacing the power button circuit board on a Toshiba Satellite 1415.

Written By: Kiril Lange



INTRODUCTION

A working power button makes the difference between a working laptop and a brick. If your laptop refuses to turn on or doesn't respond to power button presses; replacing the power button circuit board may fix it.



TOOLS:

- [Phillips #0 Screwdriver](#) (1)
 - [iFixit Opening Tools](#) (1)
-

Step 1 — Battery



- The battery is located on the front right corner of the laptop.

Step 2



- With one finger on the raised grip, slide the latch towards the front of the laptop.

Step 3



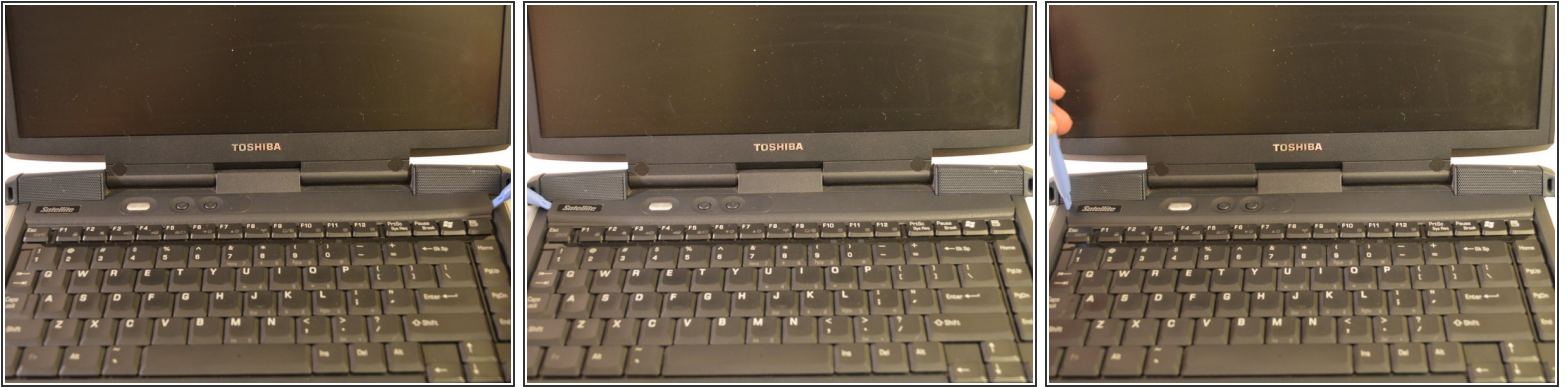
- Pull the battery out towards the side.

Step 4



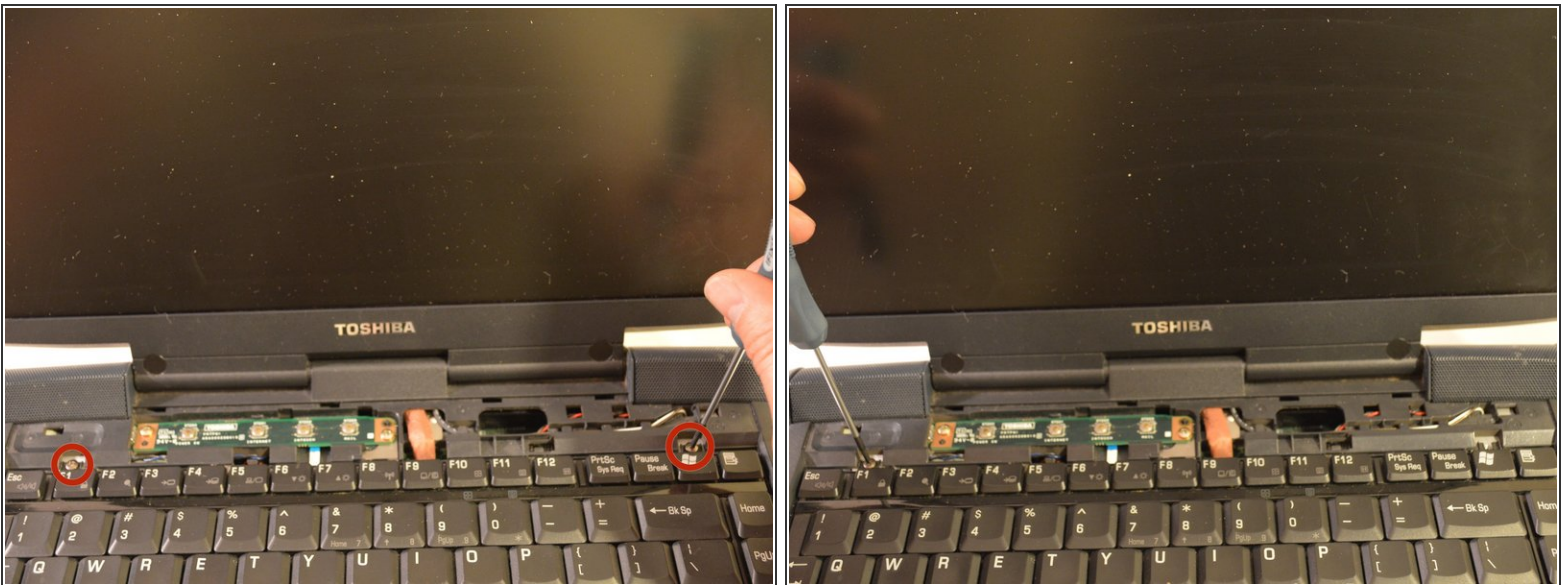
- Lift the battery straight up, out of the computer.

Step 5 — Keyboard



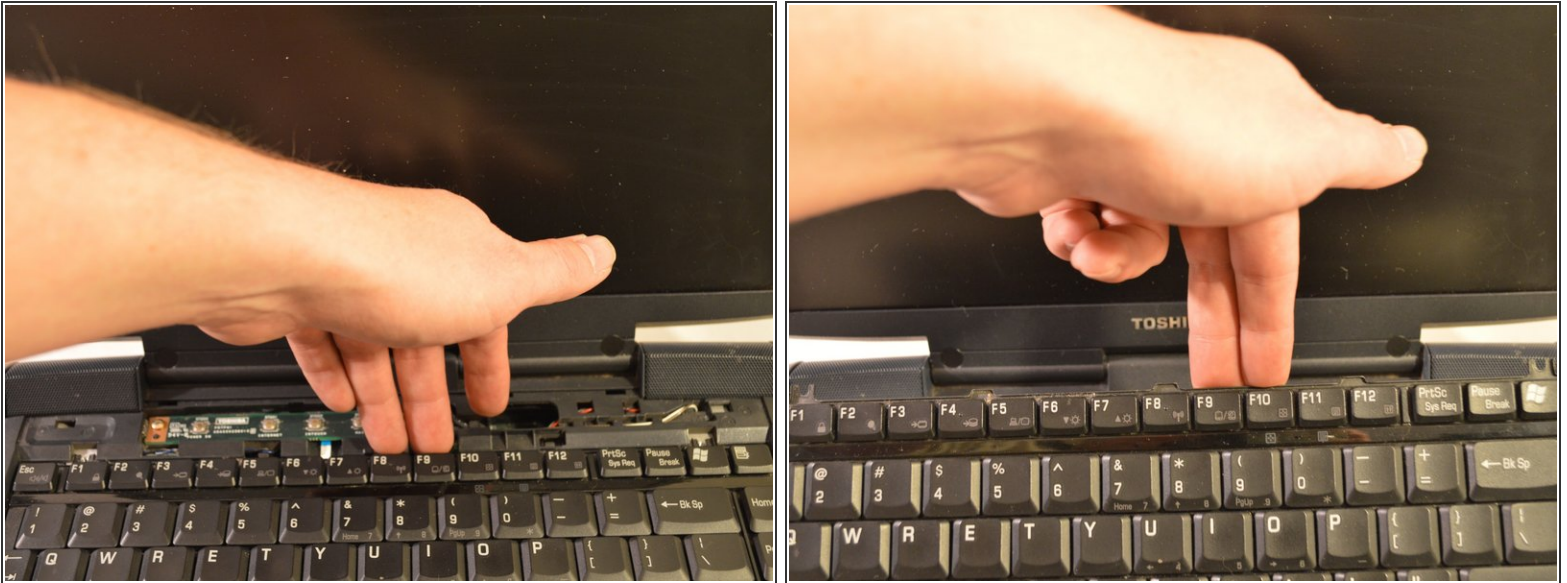
- Using a set of case opening tools, pry open the left and right sides of the black plastic strip above the keyboard.
- Fully detach the strip.

Step 6



- Unscrew the two screws near the top of the keyboard.

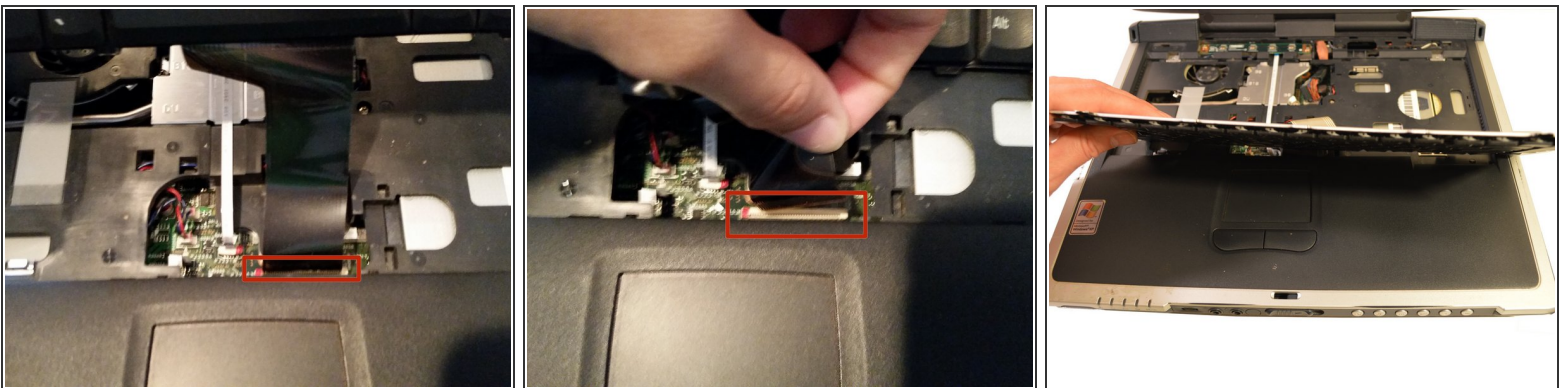
Step 7



- Lift the keyboard by holding the middle top of the keyboard.

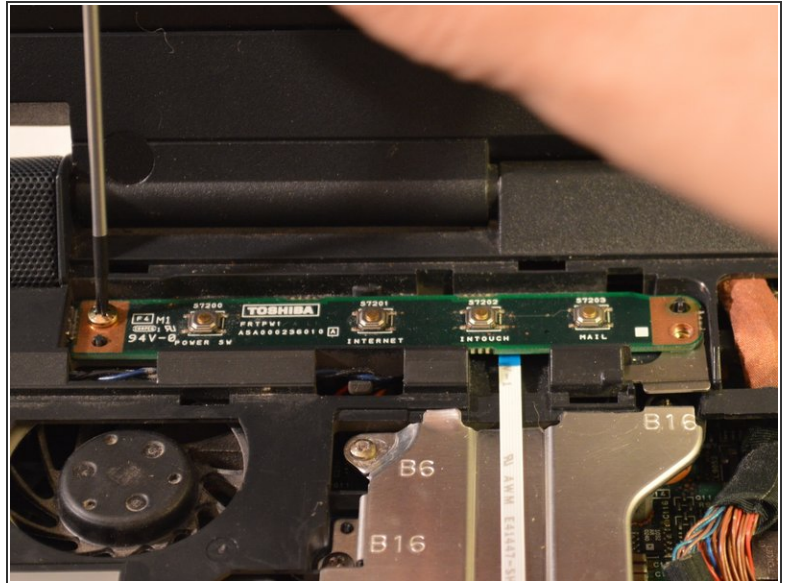
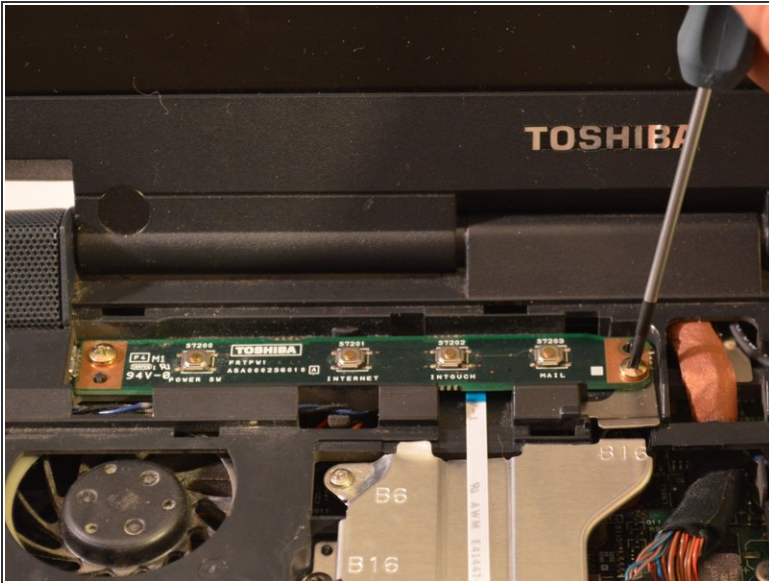
⚠ The keyboard is still connected by a ribbon cable to the motherboard.

Step 8



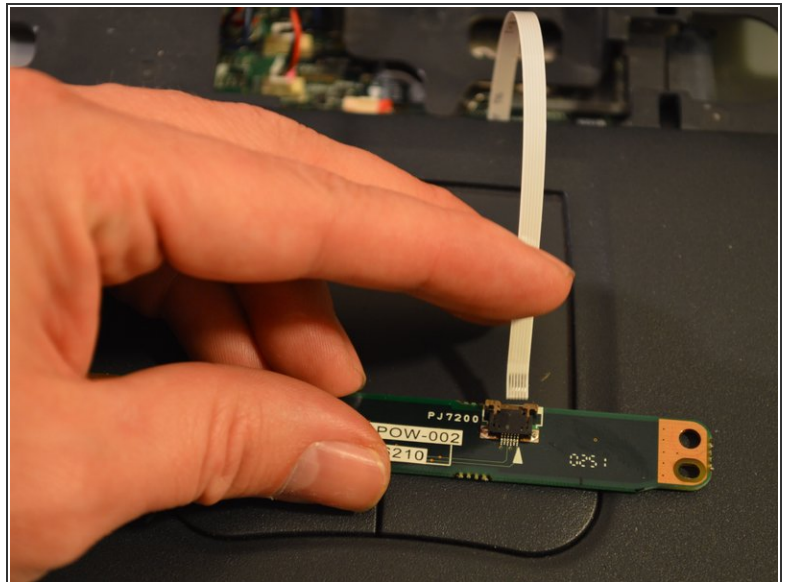
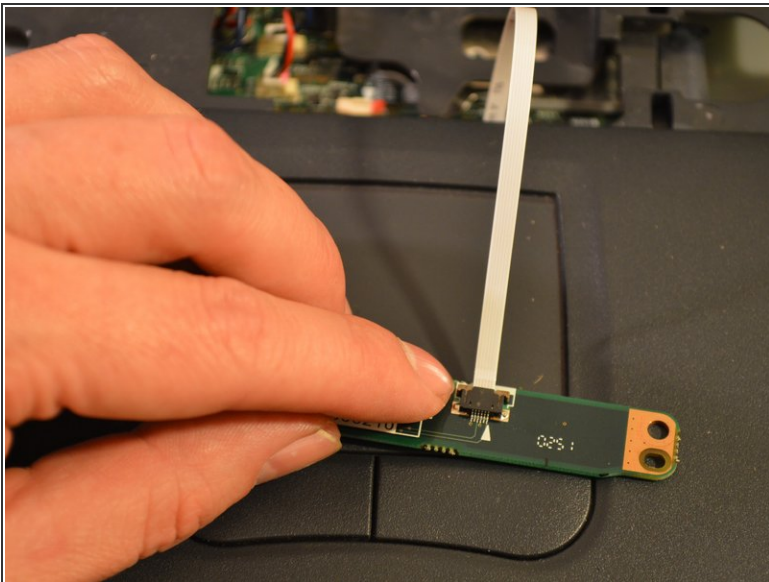
- Carefully pull upwards on the ribbon cable to detach.
- Remove keyboard.

Step 9 — Power Button Circuit Board



- Unscrew the screws on either side of the power button circuit board.

Step 10



- Pull upward on the small white ribbon cable to detach from circuit board.

To reassemble your device, follow these instructions in reverse order.