

Written By: Kiril Lange



Page 1 of 5

INTRODUCTION

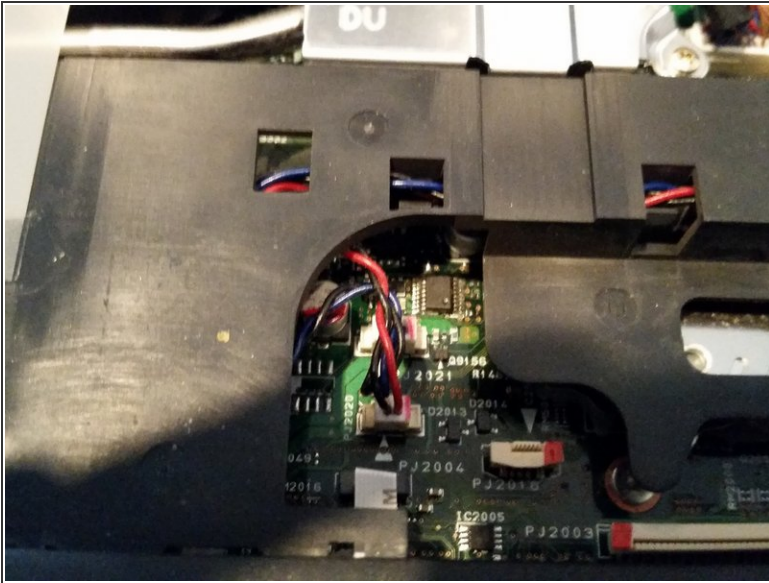
Prerequisite Only



TOOLS:

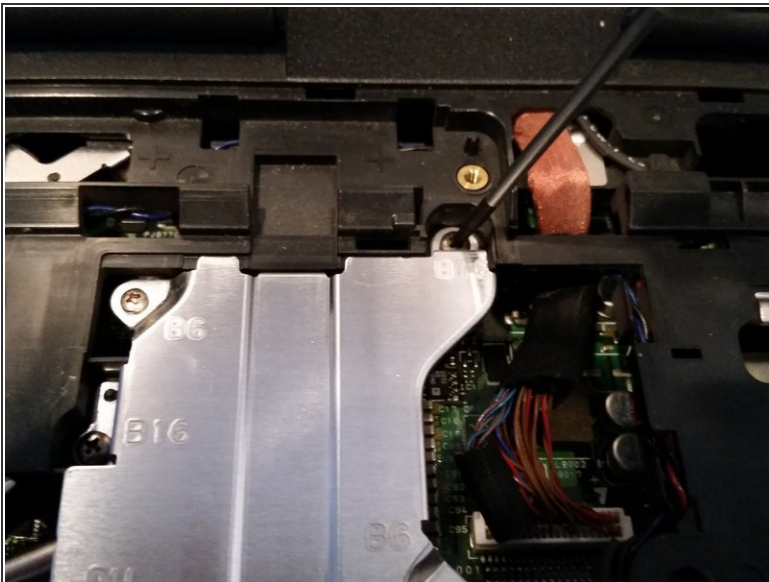
- [Phillips #0 Screwdriver](#) (1)
-

Step 1 — Upper Case



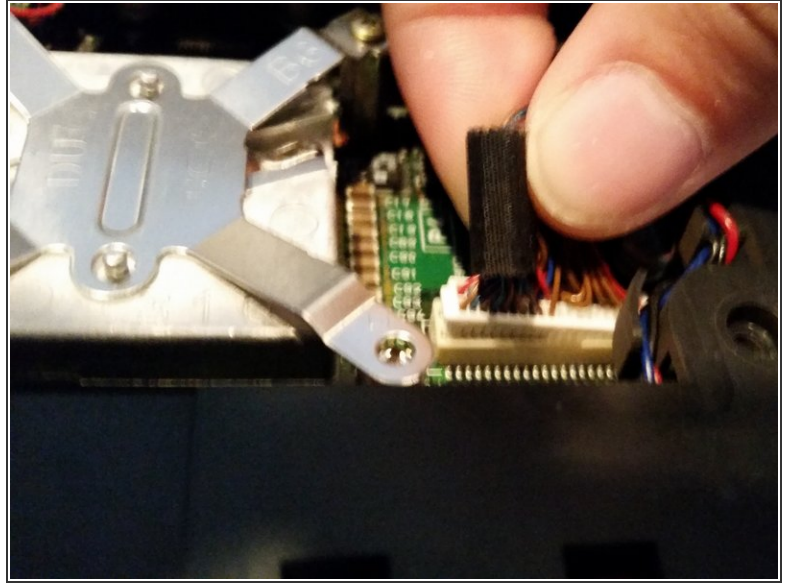
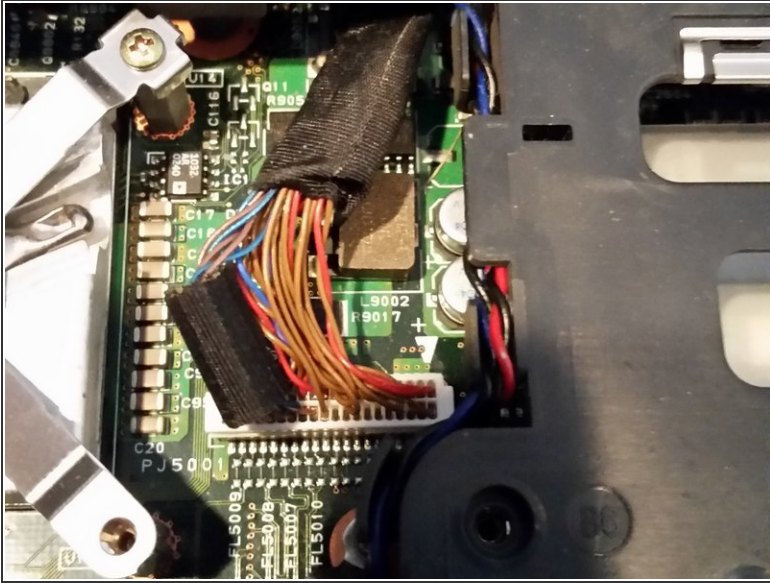
- Disconnect both speaker connectors located near the center of the laptop.

Step 2



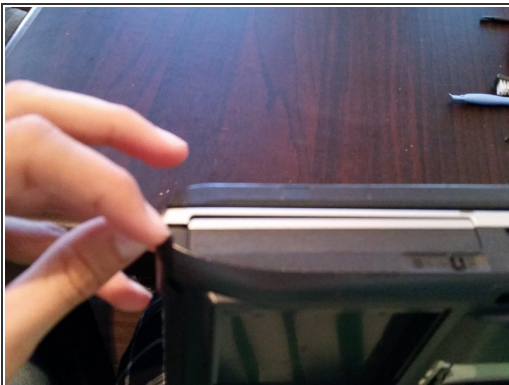
- Unscrew all visible screws on the heat sink shield.

Step 3



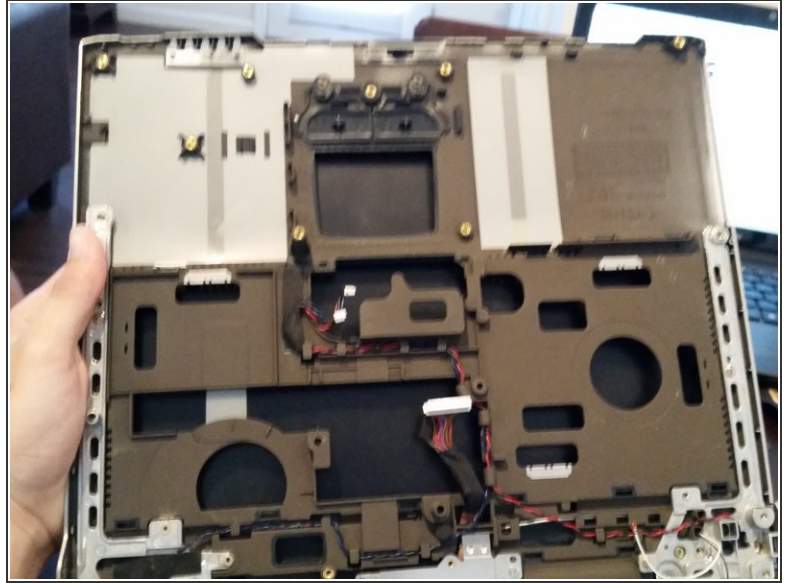
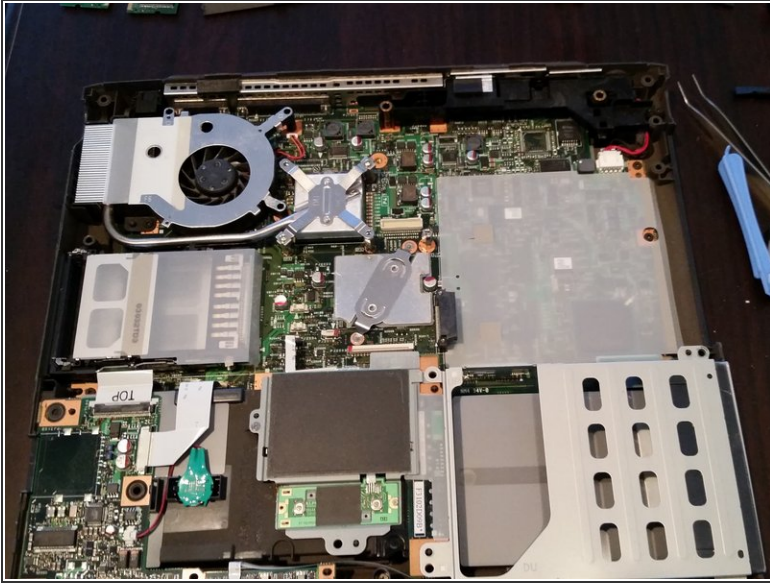
- Disconnect the monitor connector.

Step 4



- Starting from the front right corner pry apart the black bottom from the gray top.

Step 5



- Set aside the top half.

To reassemble your device, follow these instructions in reverse order.