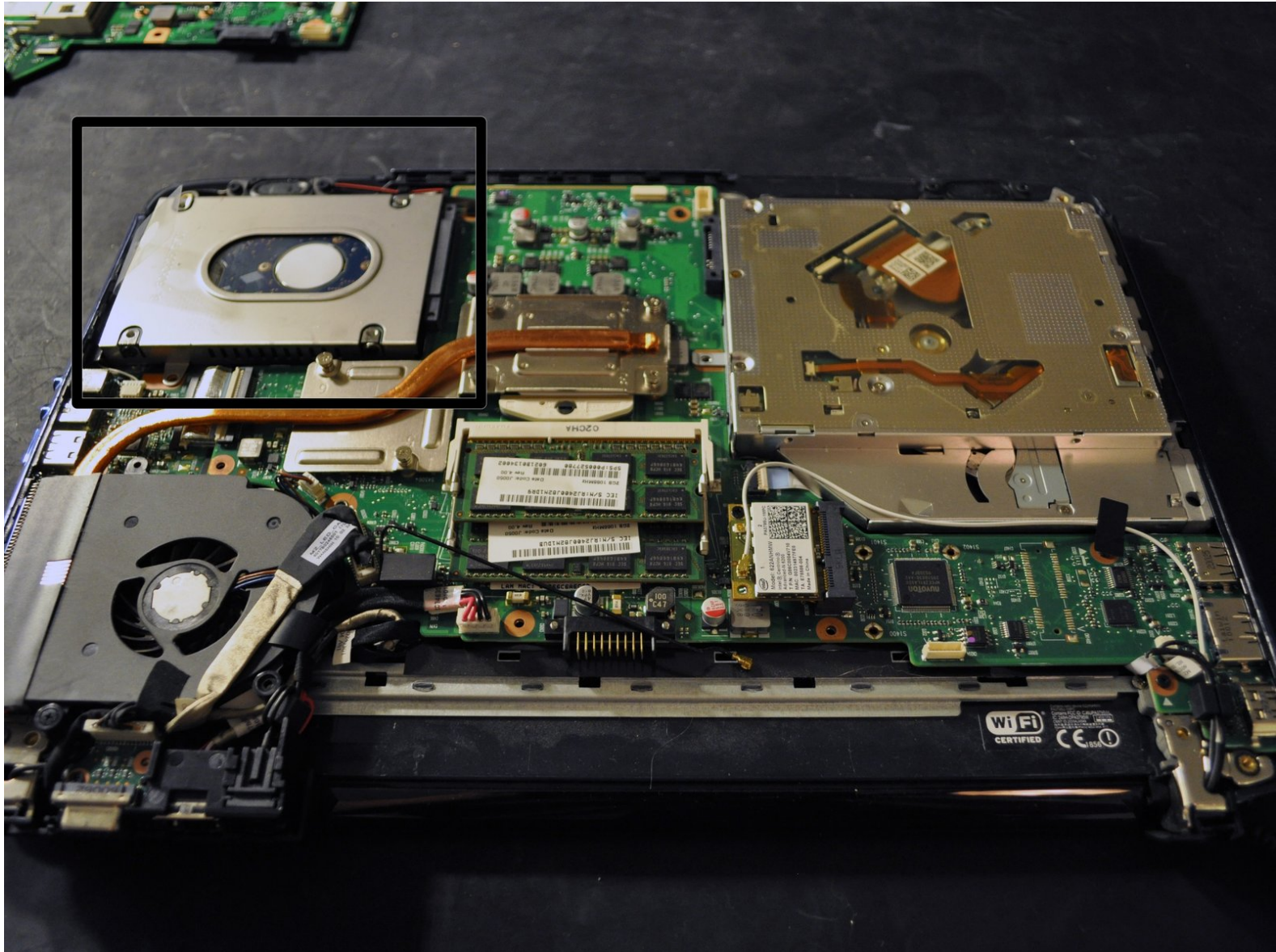




Toshiba Satellite e205 Hard Drive Replacement

Written By: Tyler

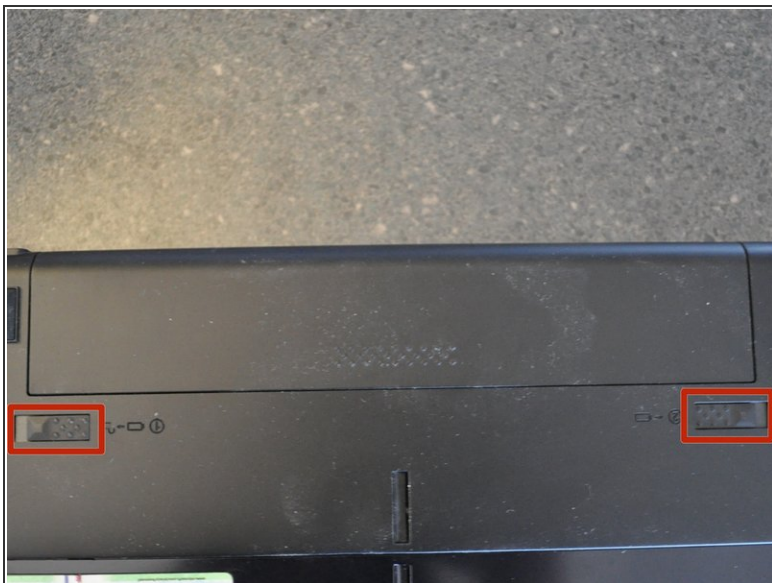




TOOLS:

- [Phillips #0 Screwdriver](#) (1)
 - [Spudger](#) (1)
-

Step 1 — Battery



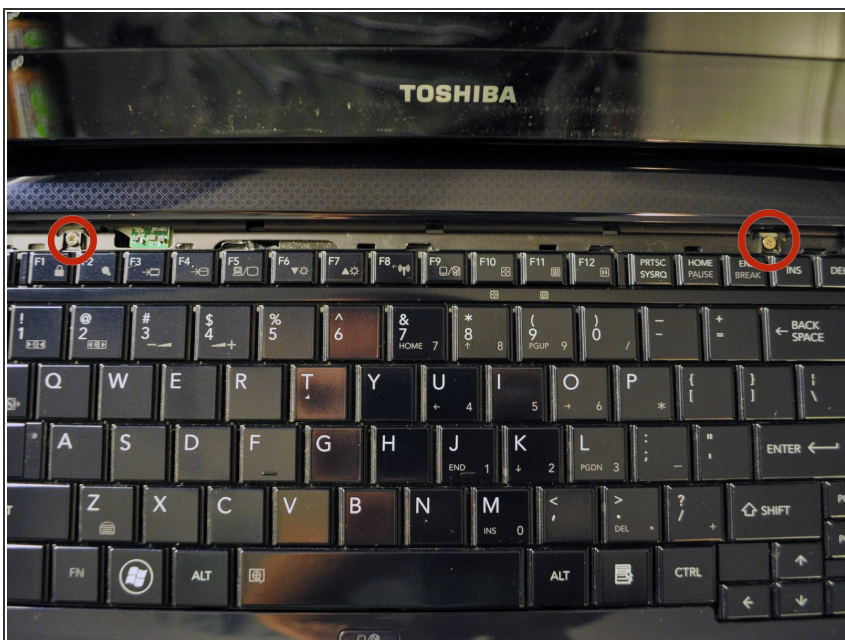
- With the battery away from you, slide the locking clips out.
 - ⓘ The left clip stays, the right clip is spring loaded.
- Slide the battery away from you.

Step 2 — Keyboard



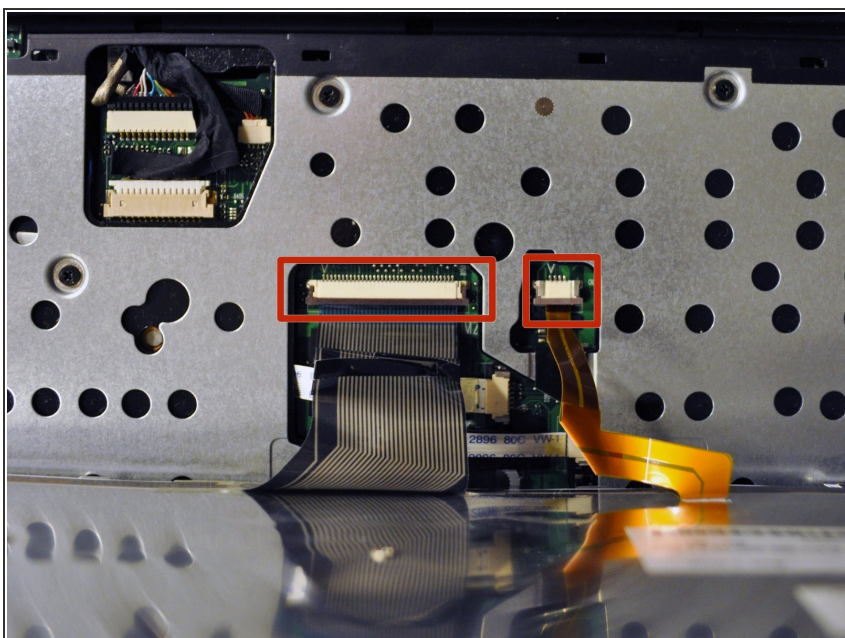
- Use a spudger to carefully pry up the keyboard screw cover.

Step 3



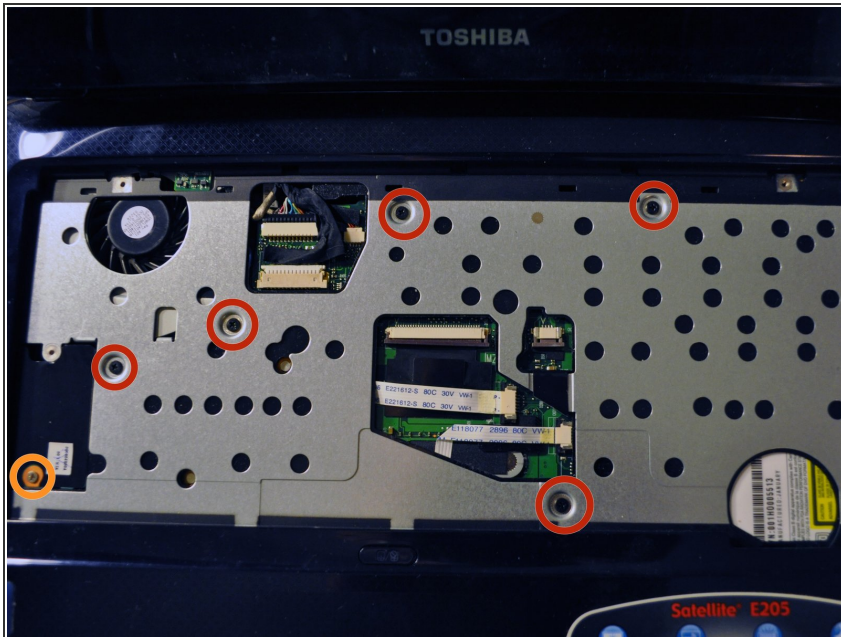
- Remove the two screws securing the keyboard to the chassis.

Step 4



- Carefully tilt the keyboard towards you and release the ribbon cables.
- Use a spudger if needed to release the latch. The latch slides out.
- The keyboard is now free and can be set aside.

Step 5 — Bottom Cover



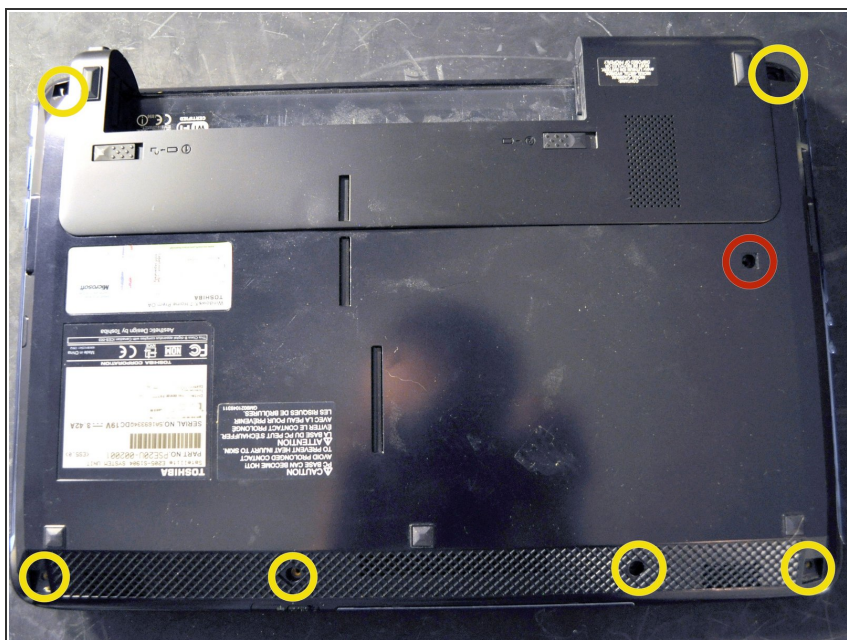
- Remove the five black screws
- Remove the one silver screw

Step 6



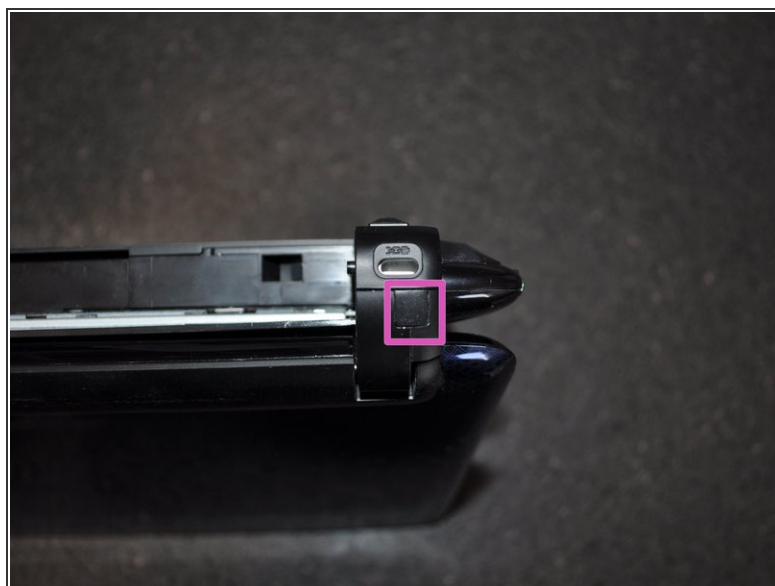
- Flip the laptop over so the bottom is facing up.
- Using a spudger, remove the seven rubber inserts.
- ⓘ The feet only go in one location on the bottom of the laptop, so save yourself some time and track where they go.

Step 7



- Remove the six silver screws.
- Remove the one black screw.

Step 8



- Stand the laptop up on end.
- Remove the two rubber inserts from the back of the laptop. One insert is on each side of the laptop.

Step 9



- Remove the two screws.

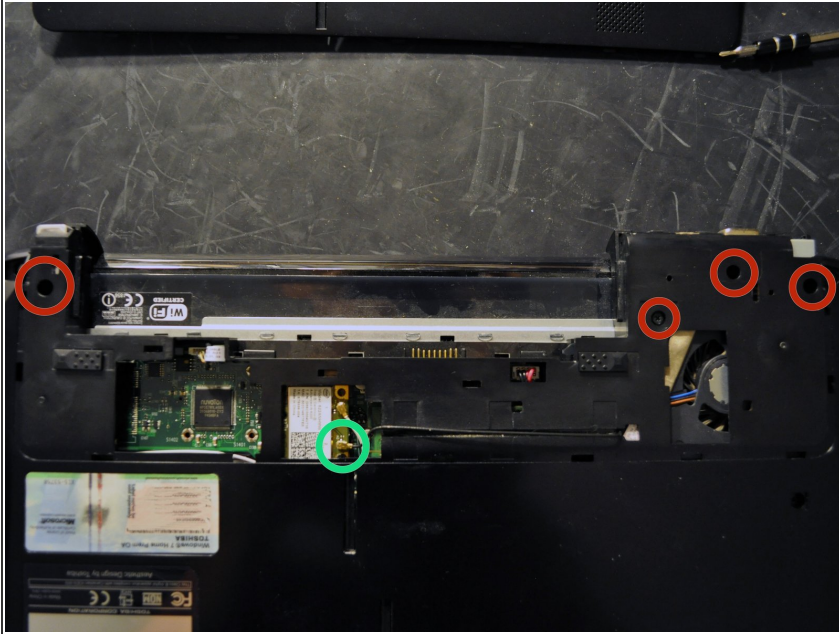
Step 10



- Carefully work a spudger in the crack at the back of the laptop and separate the small rubberized

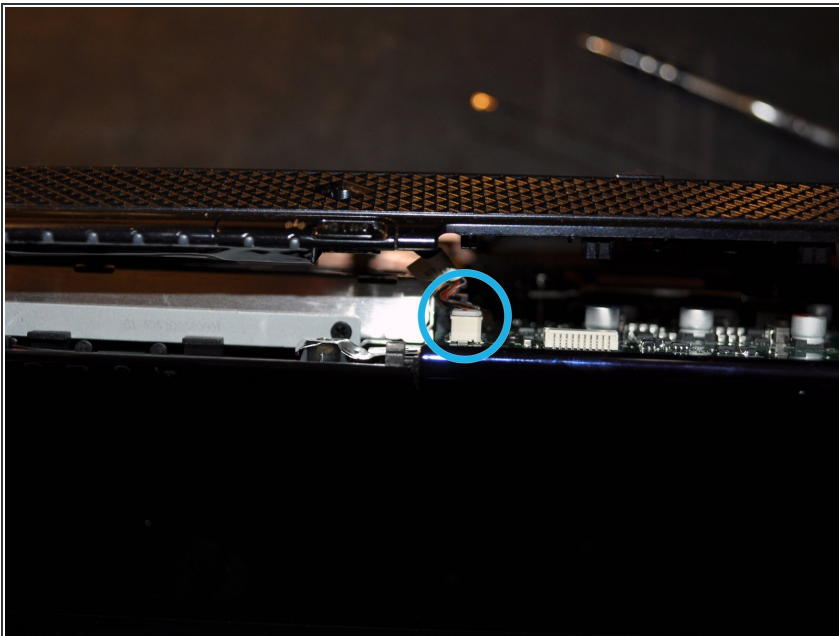
section from the bottom of the laptop.

Step 11



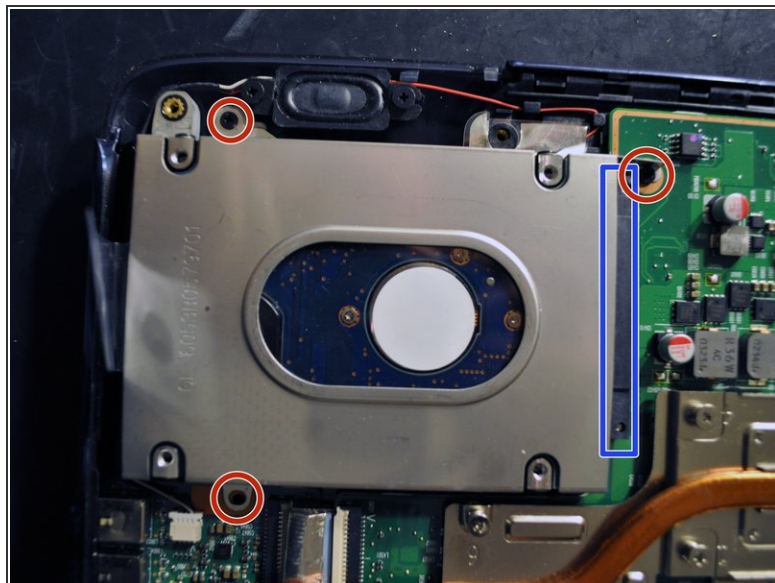
- Remove the four screws.
- Disconnect the black wireless antenna lead.

Step 12



- The bottom of the laptop is now ready to lift off.
 - Carefully work a spudger around the seam of the laptop separating the bottom from the rest of the laptop.
- ⚠ There is a data connection at the front of the laptop that needs to be disconnected.
- Use a spudger to carefully disconnect the wire from the motherboard. Once this is free the bottom will come off.

Step 13 — Hard Drive



- Locate the hard drive.
- Remove the three screws.
- Slide the hard drive out away from the motherboard connector.
 - Once the hard drive is disconnected it lifts out.

To reassemble your device, follow these instructions in reverse order.