



LG Optimus F3 SIM Card Replacement

This guide will help replace the SIM card on the LG VM720.

Written By: Basil George



INTRODUCTION

If you need to put in a new SIM card because you changed carriers, follow this guide.

Step 1 — Back Cover



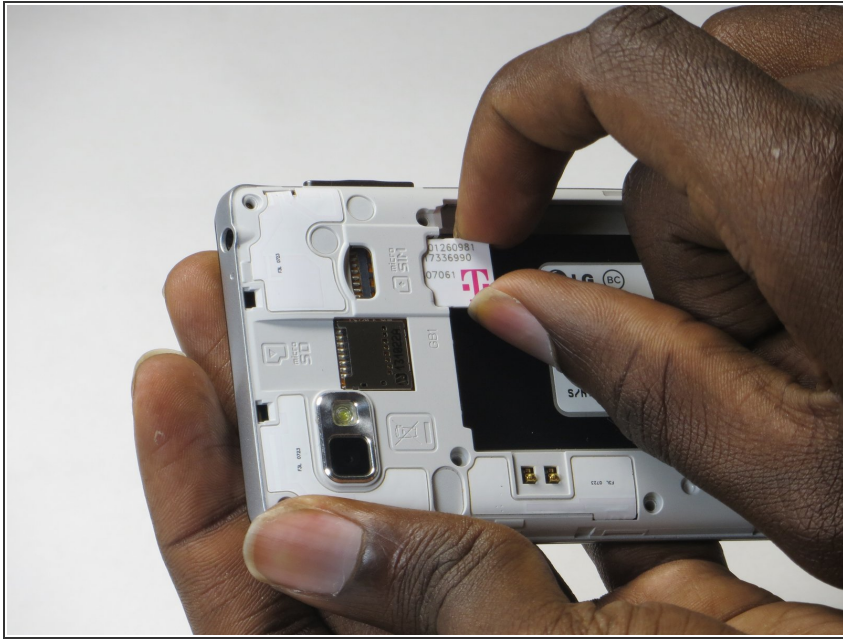
- Remove the back device of the LG VM720.

Step 2



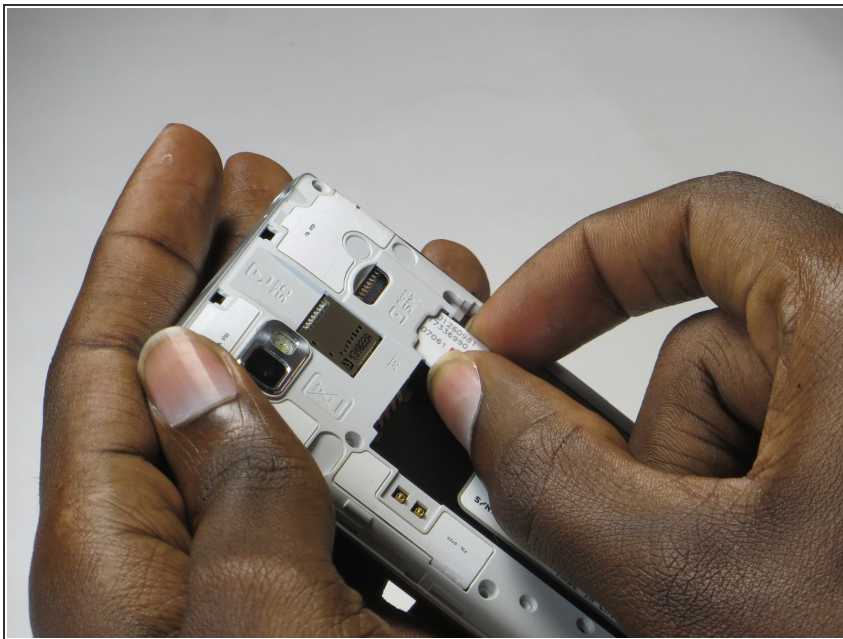
- When the back cover is completely removed, locate the sim card slot. It should be right above the the battery and it is clearly labeled “Micro Sim”

Step 3



- Use the fingertip cutout to help push the old sim card out. The sim card should exit toward the direction of the battery

Step 4



- Put in the new sim card in the same slot