



# Disassembling Planet Eclipse Etha Frame

This guide will show how to remove the frame from the Etha.

Written By: nicholasj6



---

## INTRODUCTION

Removing the frame will allow access to the eyes and solenoid should they need replacement.

---



### TOOLS:

- [Macro Bit Set](#) (1)
-

## Step 1 — Regulator



- Firmly grasp hold of the ring on the bottom of the 90 degree silver fitting on the front of the gun.
  - Pull hard, but slowly, on the macroline where it comes out of silver piece until it comes out.
- i** The macroline is the black hose connecting the regulator to the tank connection.

## Step 2



- Remove the regulator by unscrewing it in a clockwise direction.



## Step 3 — Battery and Grip Panels



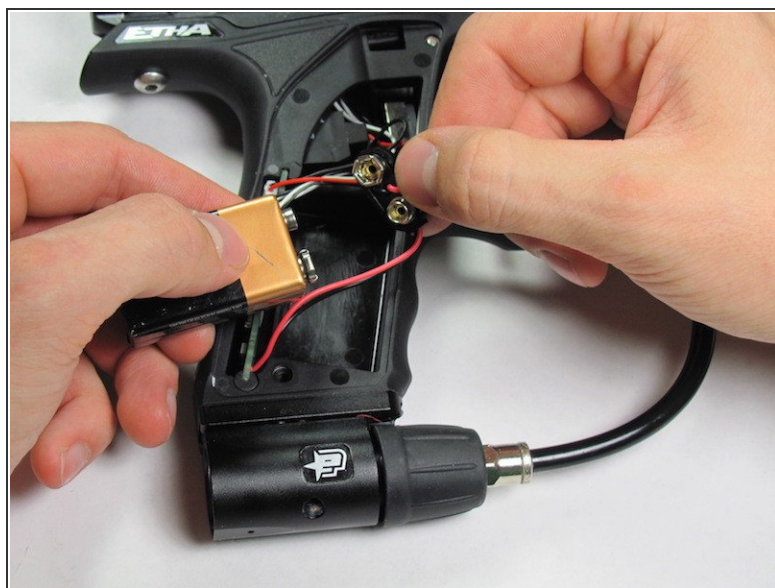
- Use the 5/64" hex key to remove the screw shown.
- Remove the grip panel by gently holding the bottom of the panel and lifting the panel off.
- ⓘ If you are only replacing the battery, skip the next step.
- ⓘ The screws in this guide are interchangeable with those shown in the Eyes replacement guide.

## Step 4



- Flip the marker over and use the 5/64" hex key to remove the screw shown.
- Remove the grip panel by gently holding the bottom of the panel and lifting the panel off.

## Step 5



- Carefully remove the 9V battery and connector.
- Remove the 9V battery from the connector.



## Step 6 — Frame



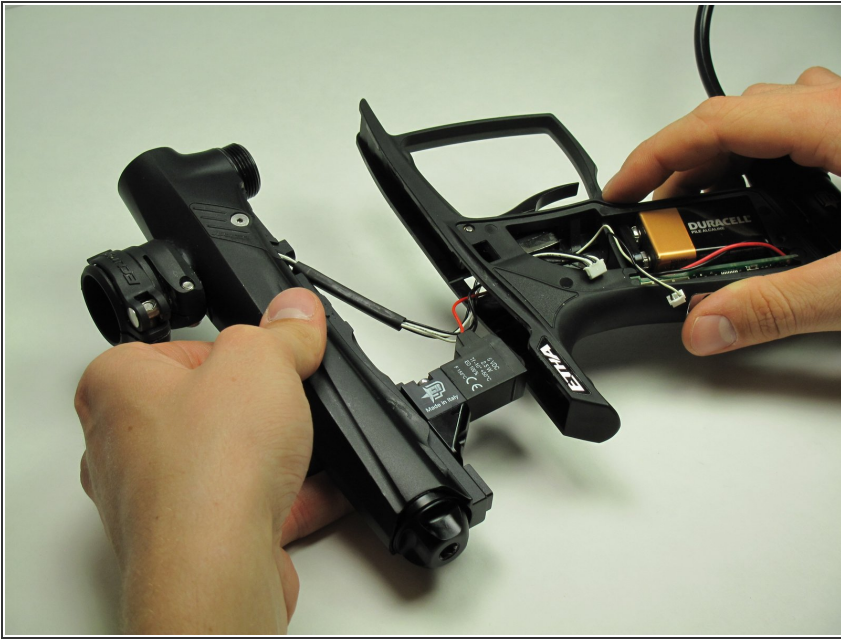
- Carefully disconnect the three connectors from the circuit board.
- ⓘ Don't worry about remembering which direction the connectors go in, they will not fit in the board in the wrong direction.

## Step 7



- Use the 1/8" hex key to remove the two dome-headed screws by rotating them counter-clockwise.

## Step 8



- ⚠ Be very careful during the step to avoid damage to the solenoid or wiring.
- Gently separate the top and bottom of the marker.

To reassemble your device, follow these instructions in reverse order.