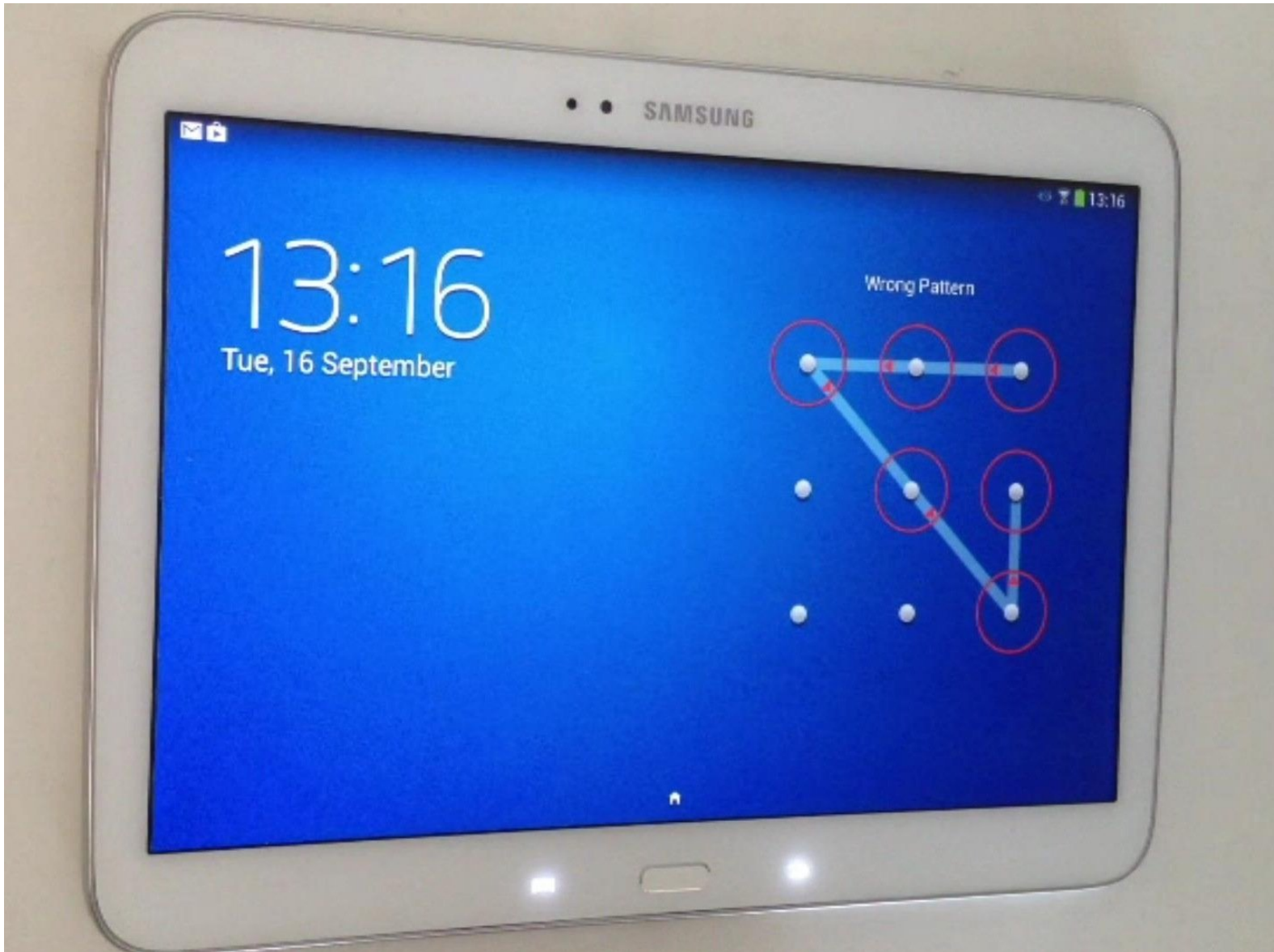




Samsung Galaxy Tab 3 10.1 Screen Replacement

This guide will give a comprehensive summary of how to disassemble, remove, replace and reassemble the screen of a Samsung Galaxy Tab 3 10.1

Written By: Devin



INTRODUCTION

This guide assumes you have a basic understanding of miscellaneous hand tools such as a screwdriver and plastic opening tool. You will also need a heat gun in order to remove the screen. We will go in depth on how to use said tool.



TOOLS:

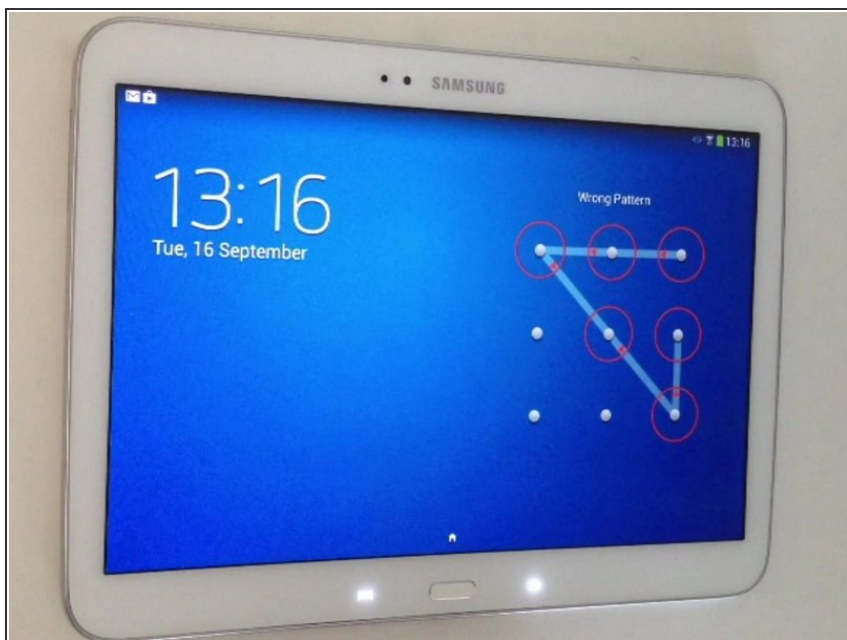
- [Phillips #0 Screwdriver](#) (1)
- [iFixit Opening Tools](#) (1)
- [Heat Gun](#) (1)
- [iFixit Opening Picks set of 6](#) (1)
- [Suction cup](#) (1)



PARTS:

- [Samsung 10.1" Screen Replacement](#) (1)

Step 1 — Ensuring the device is off



- First, ensure that your tablet is turned off by pressing the power button and selecting the "turn off" button on the screen. If the screen is too badly damaged and you are unsure if the device is off, wait 48 hours to ensure the battery drains and the device turns off.

Step 2 — Remove back of device



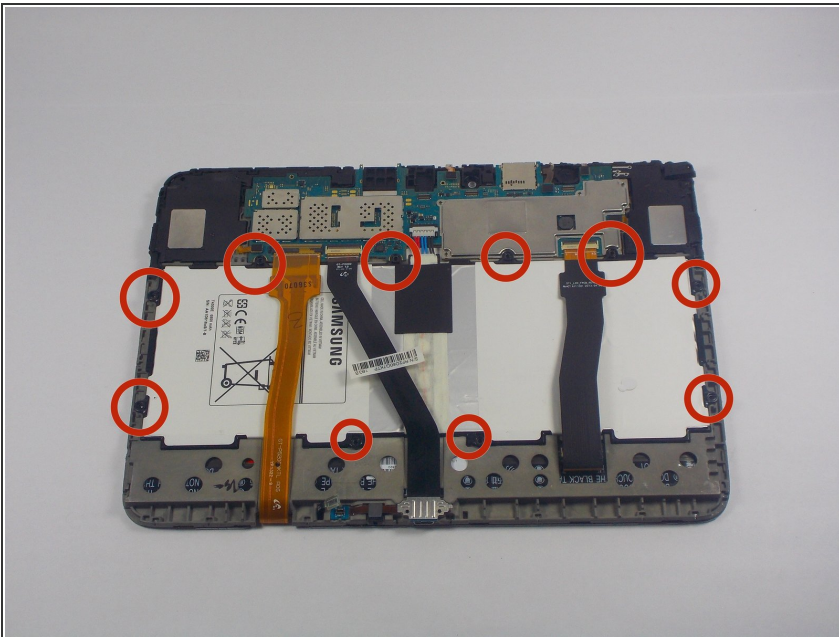
- Look at the edge of your tablet, you will see small depression in the screen where you can insert your plastic opening tools. Insert the tip of your opening tool pry open a small crack. Using the other plastic opening tool, insert the tip of that one in, pry as well.
- These particular pry tools are incredibly substandard and don't need to be used. I recommend 1 or 2 small metal pry tools (slim jim like)

Step 3 — Remove back of device continued



- As you pry, the opening will become larger. Move the tips of the tools away from each other and continue to pry. Do this all the way around the device until the back pops off.

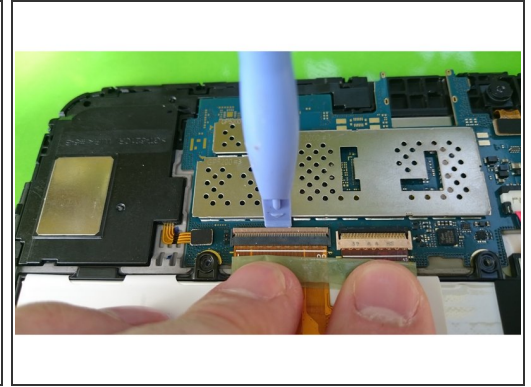
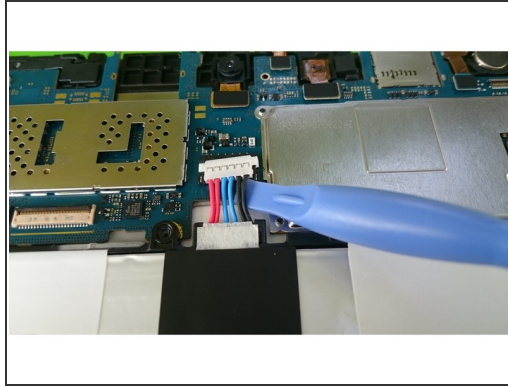
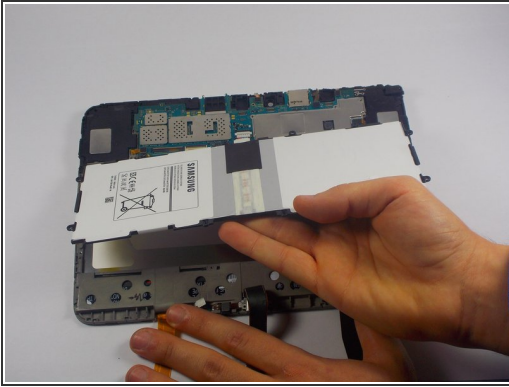
Step 4 — Removing Battery



- You will see a large white rectangle in the center of the device with a small ribbon cable coming off of it. This is the battery. Along the edge of the battery there are 10 small screws. Use the tip of your

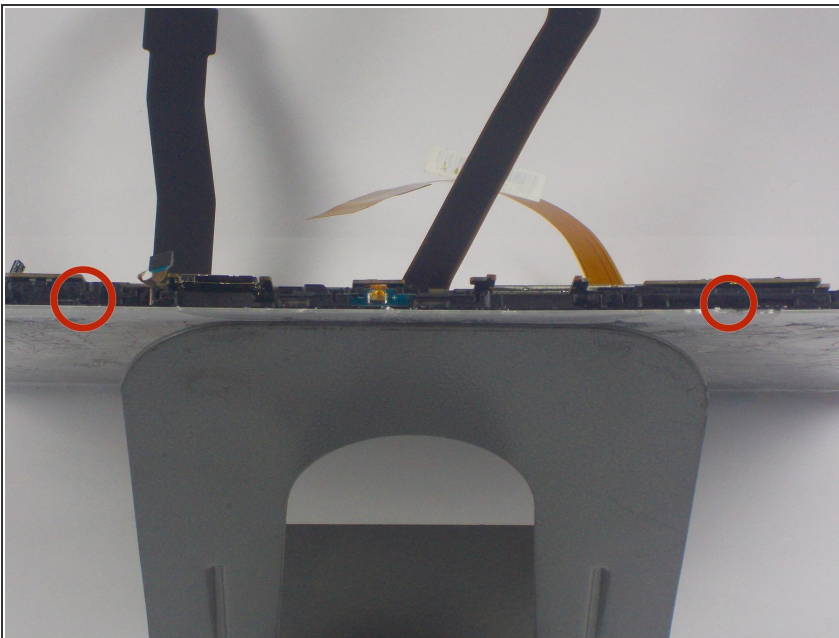
screwdriver to remove the screws, remembering to turn the screw driver counter clockwise.

Step 5 — Removing Battery Continued



- Once all 10 screws have been loosened and removed, you can now use your plastic tool to lift up one edge of the battery. Disconnect the wire from the motherboard by pressing on the small white latch where the wire connects. Remove the other wires on the device in the same manner. Once the wires are removed it is safe to remove the battery.

Step 6 — Remove the screen frame



- There is a silver plastic frame around the perimeter of the screen, remove this by holding the screen with one hand and prying it off using your index finger and thumb on your other hand

Step 7 — Heating the screen for removal



- Use your heat gun (or hair dryer) to heat the four corners as well as the middle of the screen. This will remove the glue holding the screen on. The process is very slow so it is important to be patient.

Step 8 — heating the screen continued



- once the screen is warmed up the glue will become less tactile. Insert one of your iFixit picks in between the screen and backing, letting it get pinched in between. As more of the glue lets go, add more picks along the perimeter of the screen.

Step 9 — Screen removal continued



- Once the screen has loosened up, press your suction cup to one of the corners of the screen. Use one of your plastic removal tools and pry against the screen and the backing. Again, pry around the screen, following your tool with the suction cup as you go. Remove the glass screen.

Step 10 — Inserting the new screen



- Remove the plastic film from the inner side of your new screen. If your screen comes with pre-existing stickers, remove the coverings from said stickers so the sticky backs are facing the outwards. **WARNING: ENSURE THAT THE HOLES FOR THE CAMERA AND LED ARE ALIGNED PROPERLY!** Once aligned, press the screens edges firmly into the frame of the tablet.

Step 11 — Re-assembly



- Work backwards from here, first putting the screen frame back on. Then insert the battery and screw the screws back in (rotating them clockwise). Then place the ribbon cables back in and finally press the back of the device back into place.
- ⚠ Be careful to have correctly center the new digitizer glass. If the glass is not properly aligned, you will break it in putting the back cover.
- Before closing the back cover, you can test the device with switching it on via the power button.

To reassemble your device, follow these instructions in reverse order.