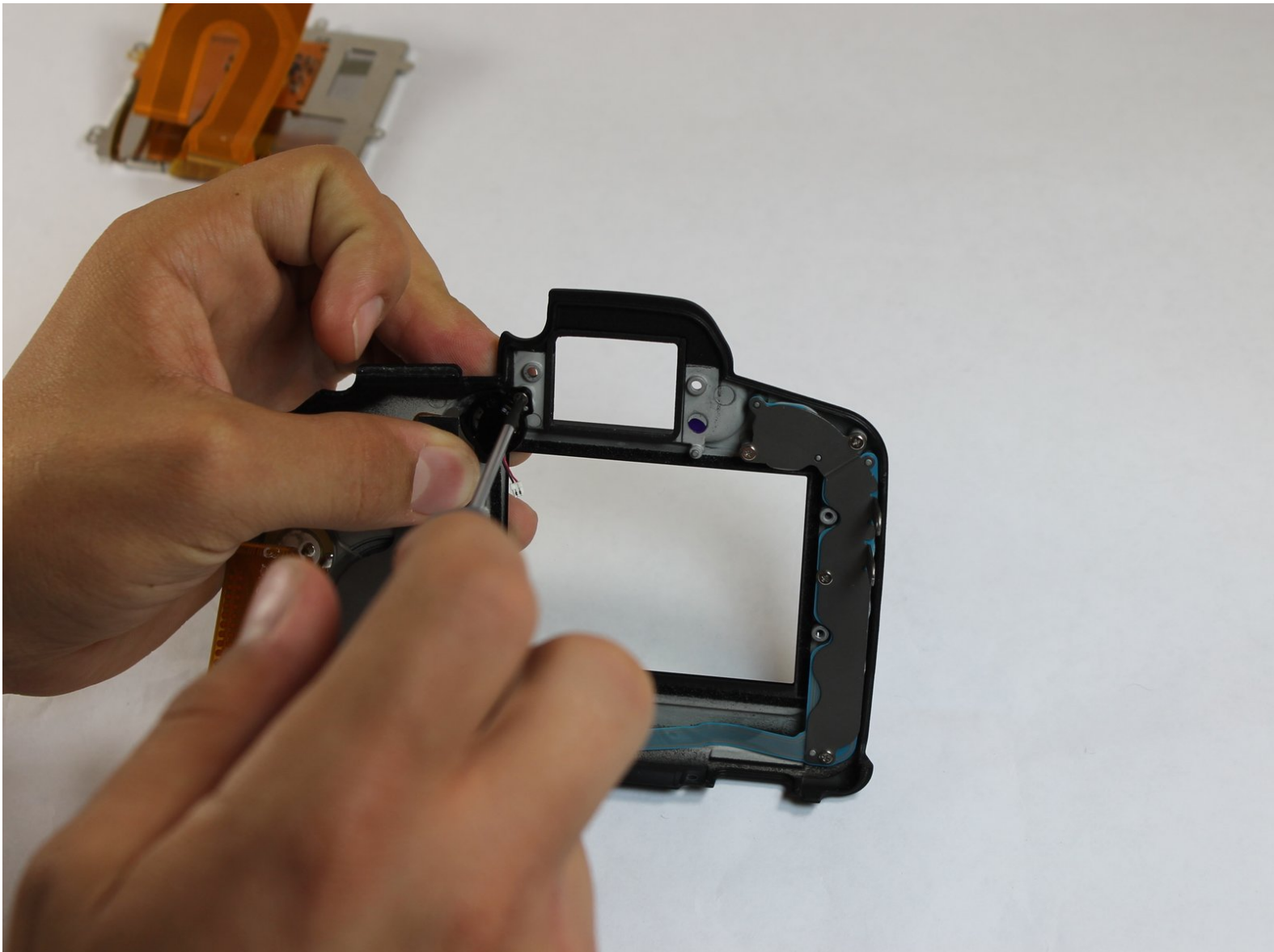




Canon EOS 5D Mark II Internal Speaker Replacement

This guide will show users how to replace the internal, rear-facing speaker.

Written By: Mike Seed



INTRODUCTION

Use this guide to access and replace the speaker. The creators of this guide could not get the speaker back in how it was originally, but the screw can hold it in place and the back panel can still close.



TOOLS:

- [Phillips #0 Screwdriver](#) (1)
-

Step 1 — Clock Battery



- Lift the rubber flap covering the input/output jacks.

Step 2



- Using a Phillips #000, remove the single 3.4 mm screw.

Step 3



⚠ This step will permanently erase all user settings.

- The memory battery can now be easily slid out of place.
- ⓘ If you are following this guide in an effort to perform a hard reset, you should now press the shutter button multiple times in order to drain any left over power, then replace the batteries and power the device back on. You have just performed a hard reset!

Step 4 — Back Panel



- Peel back the rubber cover above the in/out ports to reveal two screw heads.

Step 5



- Remove both 5.4 mm screws using a Phillips #0.

Step 6



- Lift the in/out port plastic covering from the bottom where the backup battery used to be.

Step 7



- Remove each 6.3 mm screw on either side of the viewfinder using a Phillips #0 screwdriver.

Step 8



- Remove the three 4.8 mm screws on the bottom of the back plate using a Phillips #0.

Step 9



- Peel back the rubber covering next to the menu dial to access the screw.
- Remove the single 3.4 mm screw using a Phillips #0.

Step 10



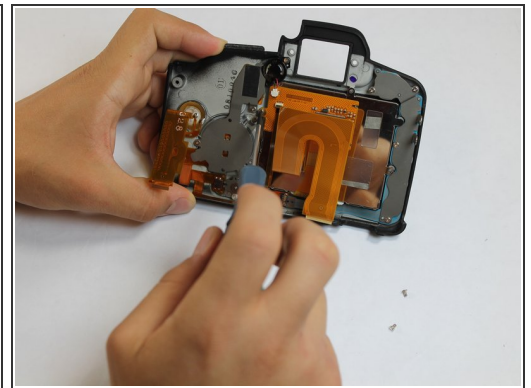
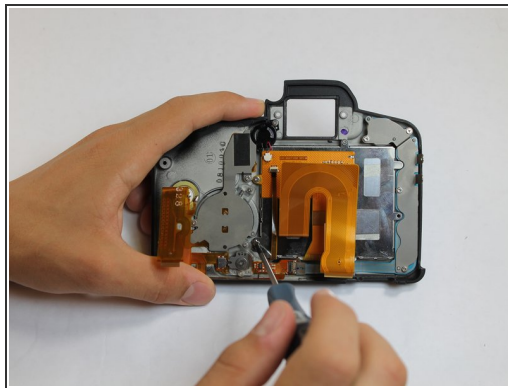
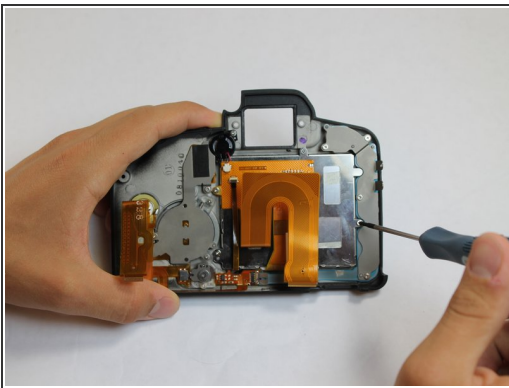
- The back panel can now fall off easily by turning the device upside down. Be sure to catch it so the data ribbons do not tear or tug.

Step 11



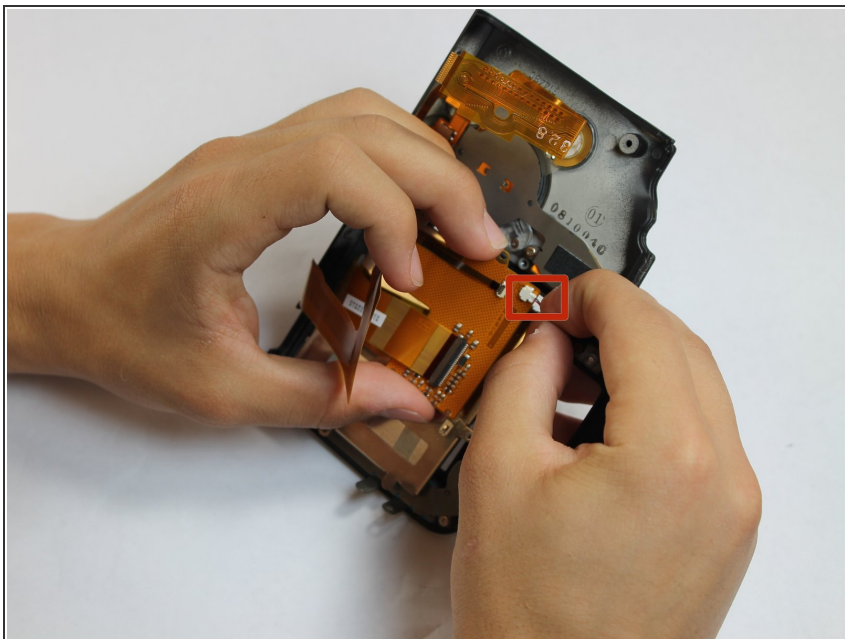
- Remove each data ribbon cable from the motherboard by applying pressure down towards the motherboard and gently sliding your thumb upwards on the slot where the cable meets the motherboard. This will raise a very small clip that locks the cable in place.
- The back panel is now free from the rest of the device.

Step 12 — LCD



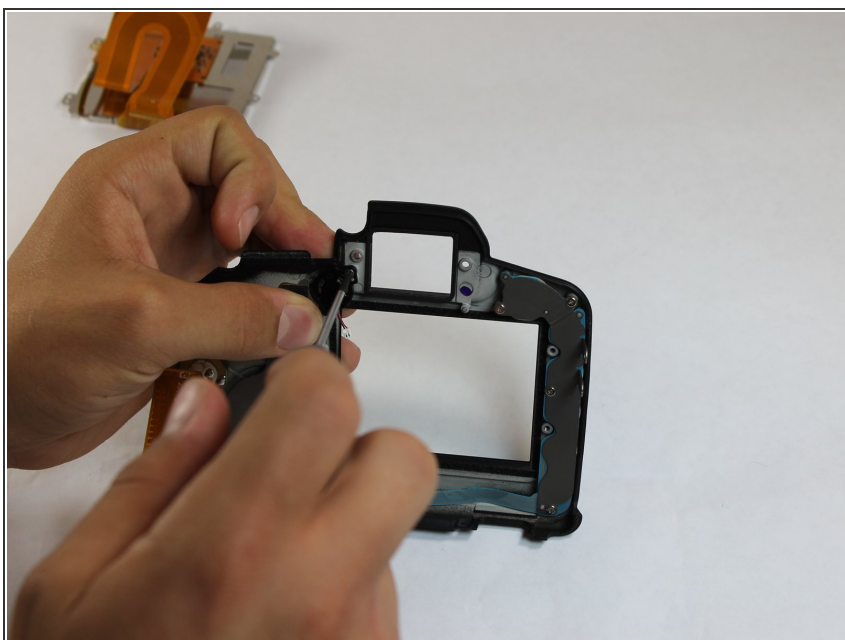
- Remove each of the 3.4 mm screws holding in the LCD using a Phillips #0.

Step 13



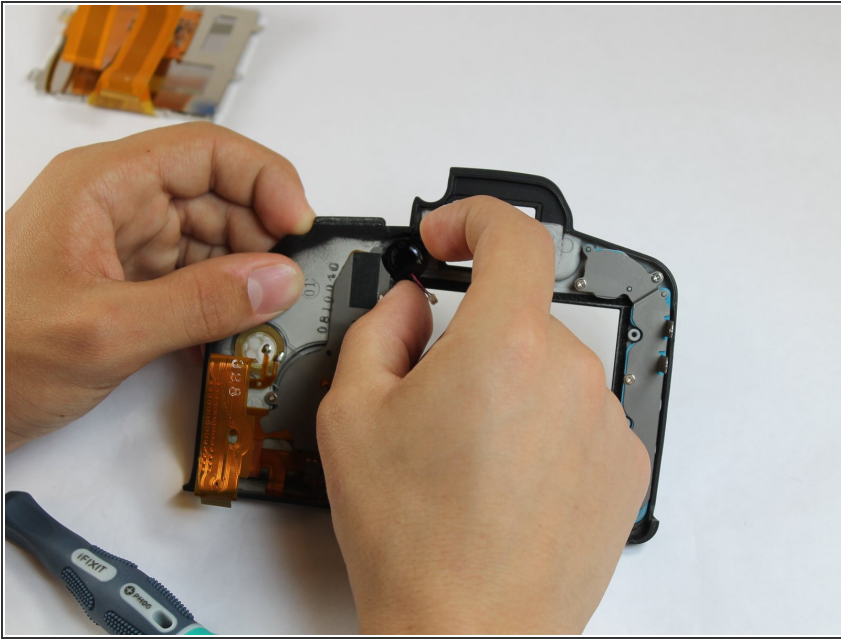
- Grip the wire attaching the speaker to the data ribbon cable and pull it out.
- The LCD is now free from the back panel.

Step 14 — Internal Speaker



- Remove the single 4.8 mm screw using a Phillips #0.

Step 15



- Remove the speaker by firmly gripping the top of the speaker and pulling down towards the bottom of the back panel while rotating the top of the speaker upwards, away from the back panel. This will allow the speaker to come off of its pivot point.

To reassemble your device, follow these instructions in reverse order.