



Nintendo DSi XL Touchscreen Replacement

Touchscreen replacement.

Written By: David Hodson



INTRODUCTION

The lower display screen on the DSi XL is touch-sensitive. Regain touch control over your DSi with a new touchscreen.



TOOLS:

- [Phillips #00 Screwdriver](#) (1)
- [Push Pin](#) (1)
- [Spudger](#) (1)



PARTS:

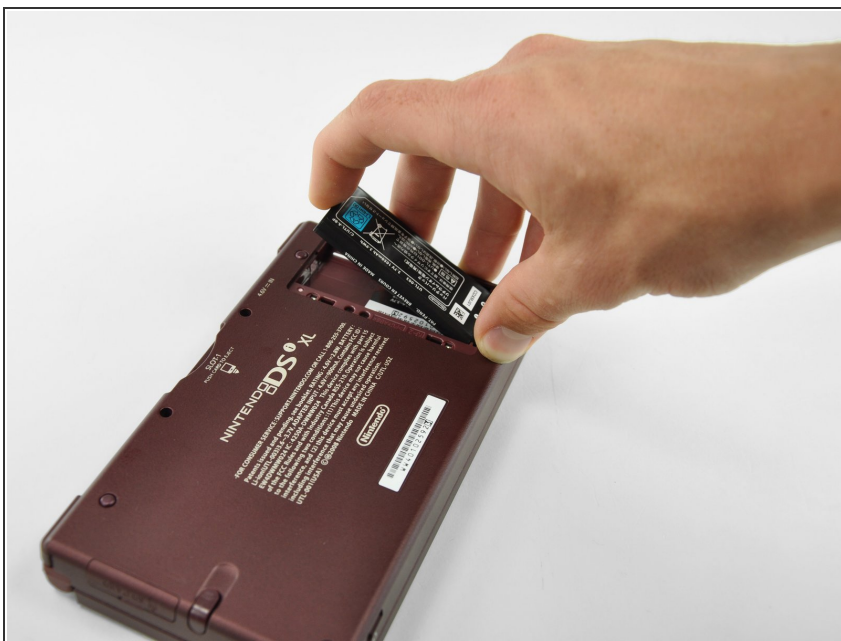
- [Nintendo DSi XL Touchscreen](#) (1)

Step 1 — Battery



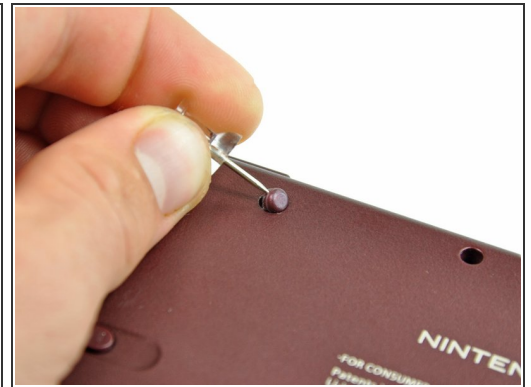
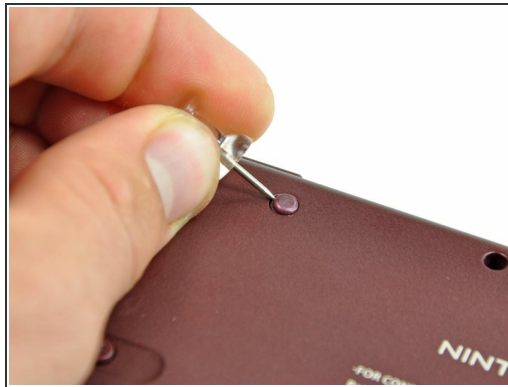
- Remove the two Phillips screws securing the battery cover to the back of the handheld console.
- Lift the battery cover off the back of the DSi XL.

Step 2



- Lift the battery from the DSi XL.

Step 3 — Lower Case



- Remove the four rubber screw covers on the lower case by prying them up with a push pin.


Step 4



- Remove the following seven Phillips screws that secure the lower case to the rest of the DSi XL:
 - Four silver 5.3 mm screws
 - Two black 5.3 mm screws
 - One black 2.5 mm screw

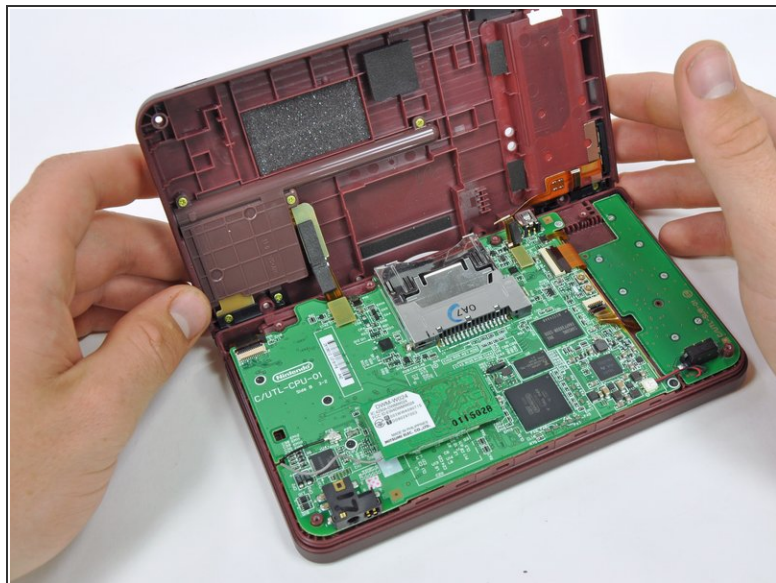
Step 5



 Turn the DSi XL over, and open the display.

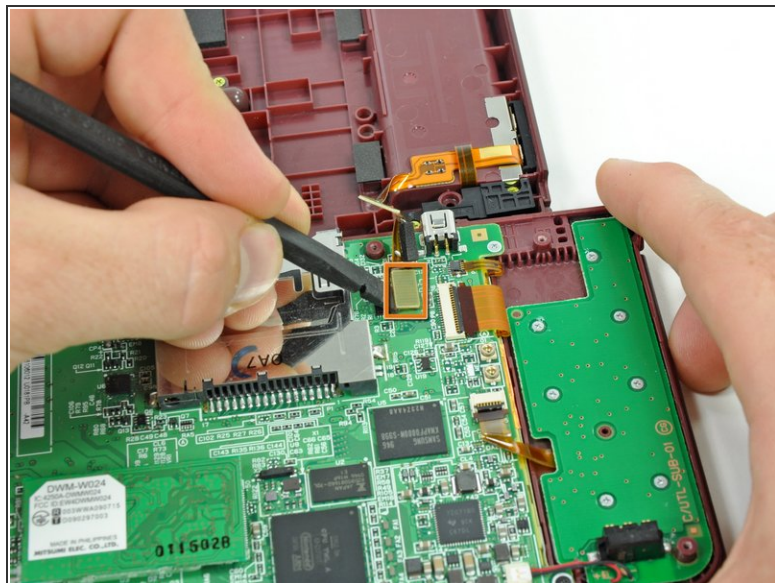
- Insert a spudger between the upper and lower case at the bottom left corner of the DSi.
- Slide the spudger along the bottom edge of the upper case to release the latches securing the upper case to the lower case.

Step 6



- i Close the display and turn the DSi XL over.
- Lift the lower case from the front edge.
- Rotate the lower case away from the DSi.
- i The lower case cannot be completely removed yet, since it is still connected to the motherboard.

Step 7



- Using a spudger, pry the SD card/right shoulder button connector off its socket.
- Pry the volume button/left shoulder button connector off its socket on the motherboard with a spudger.

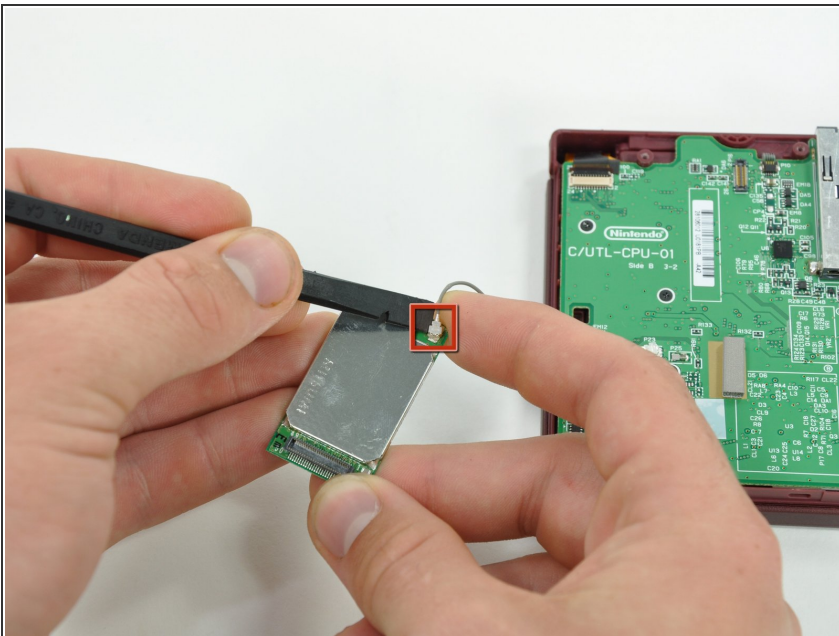
Step 8 — Wi-Fi Board



- Lift the Wi-Fi board up off its socket on the motherboard.

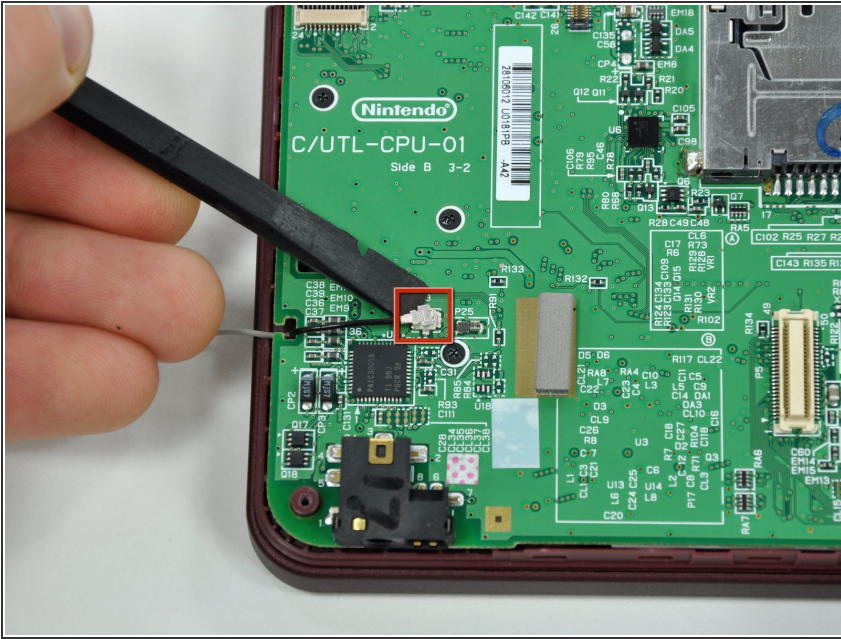
⚠ Do not attempt to completely remove the Wi-Fi board yet. It is attached to the motherboard by an antenna cable.

Step 9



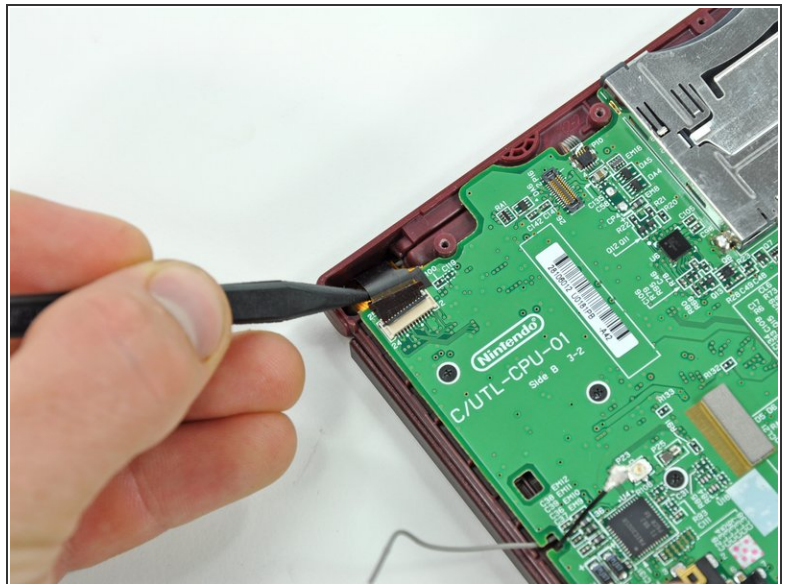
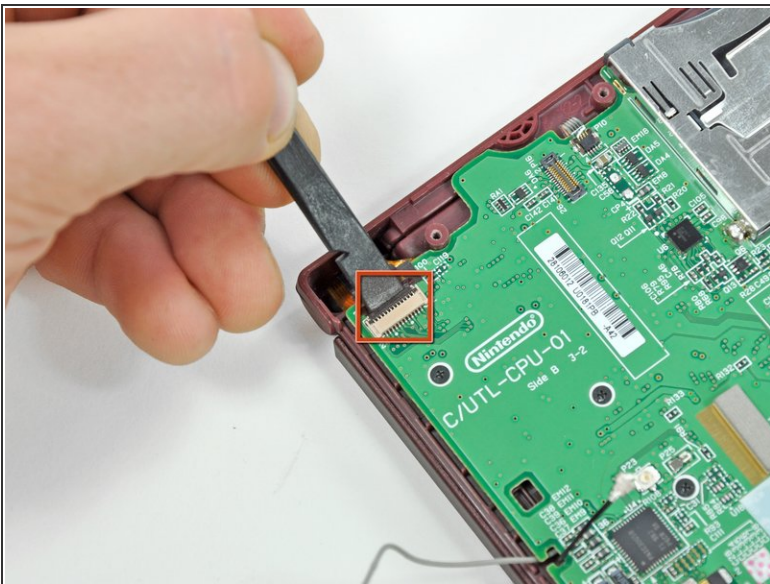
- Use a spudger to pry the Wi-Fi cable off its socket on the underside of the Wi-Fi board.

Step 10 — Motherboard



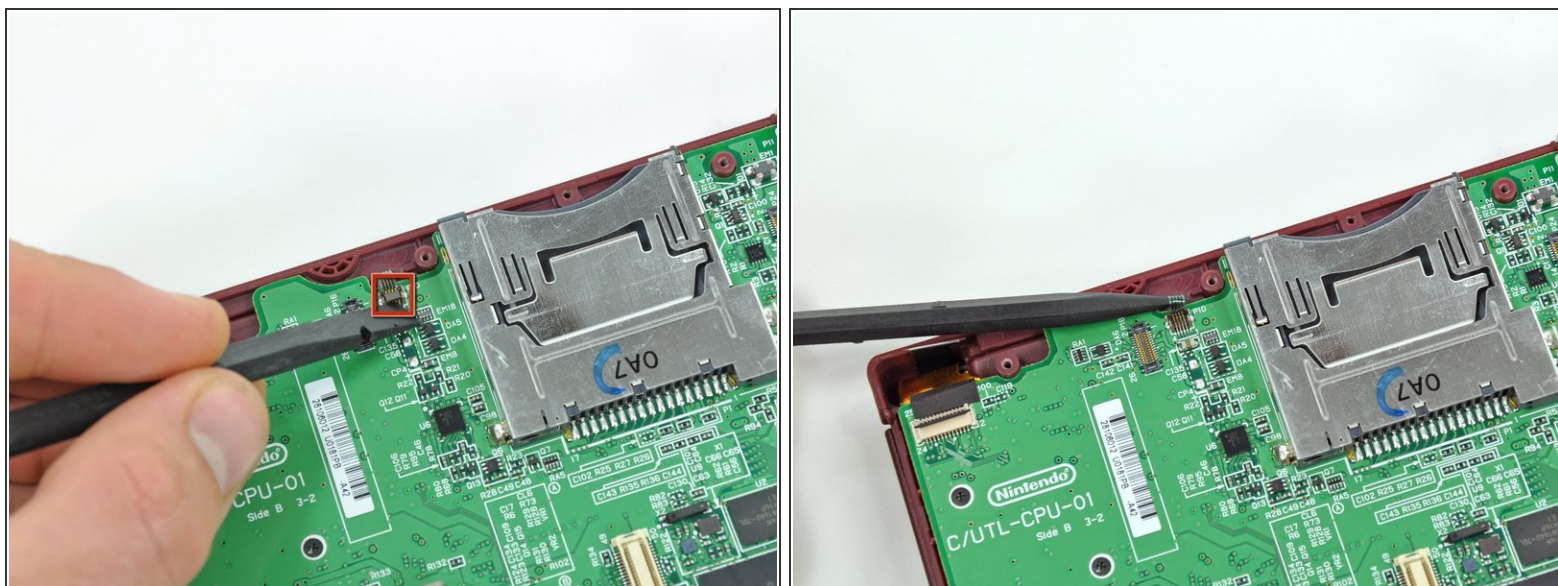
- Use a spudger to pry the microphone cable off the motherboard.
- ❗ Pry from underneath the cable.

Step 11



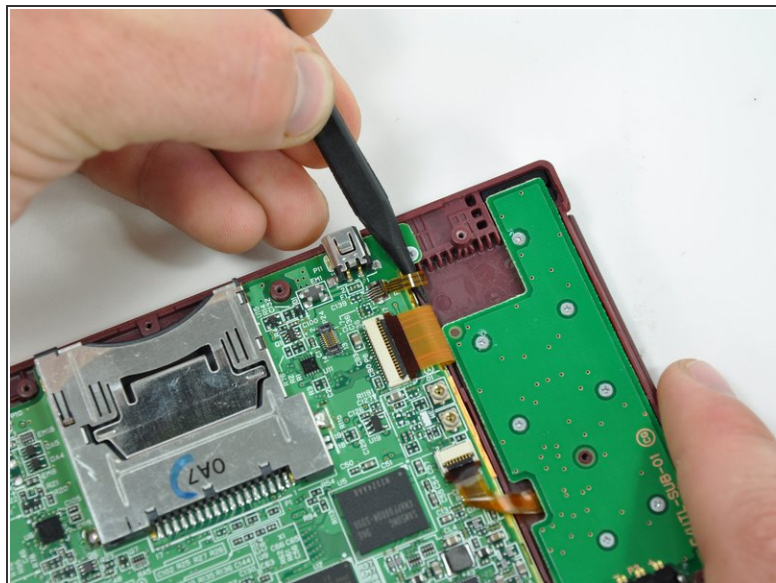
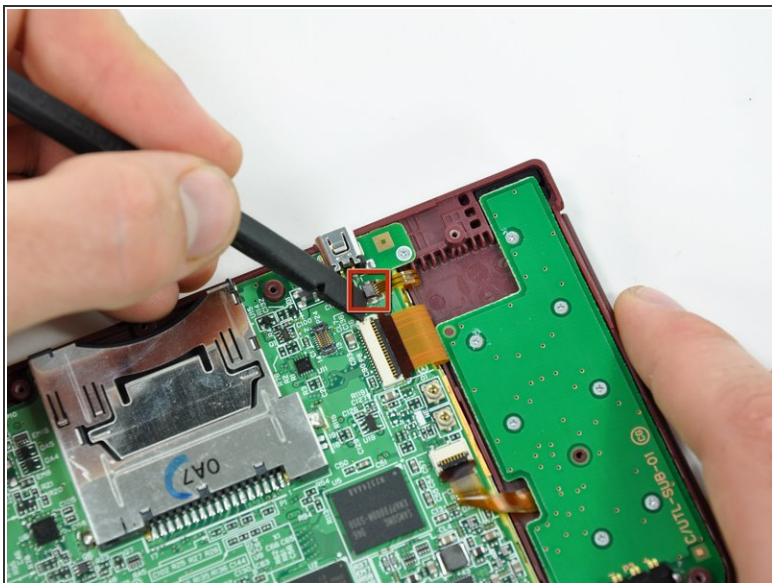
- Using the flat end of a spudger, flip up the retaining flap on the camera ribbon ZIF connector.
- Use the pointed end of a spudger to pull the camera ribbon from the ZIF connector.

Step 12



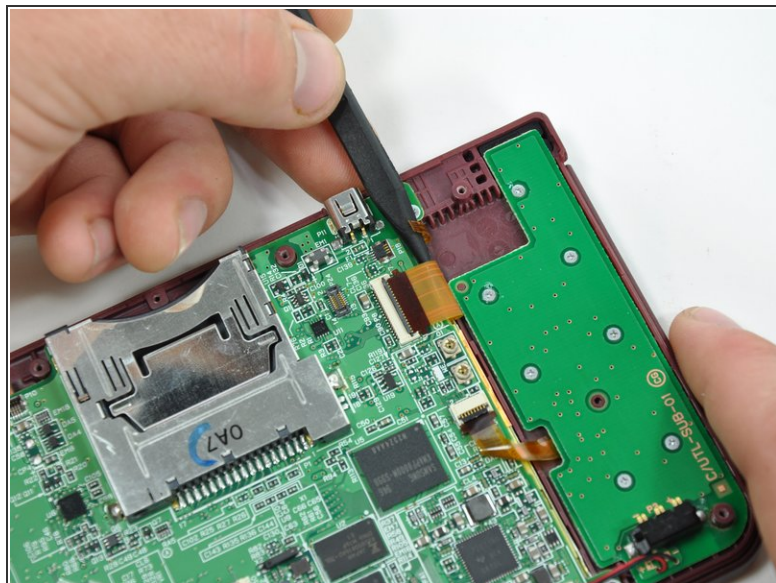
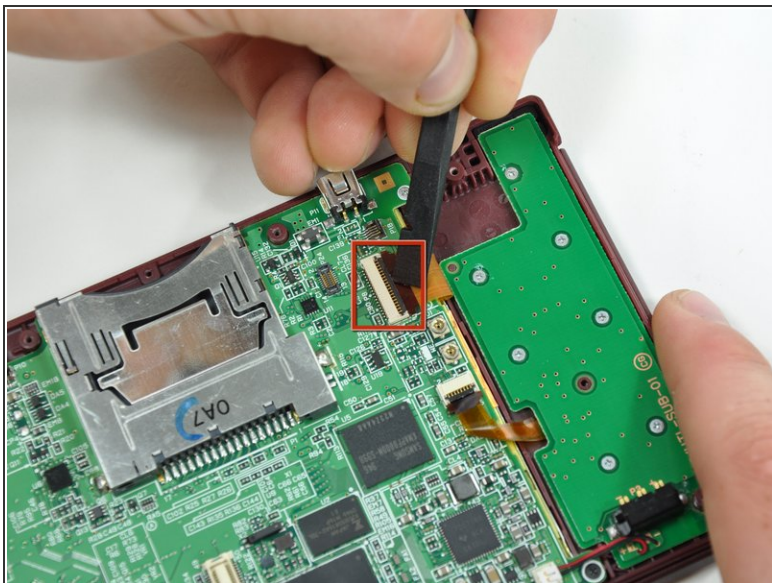
- Using the flat end of a spudger, flip up the retaining flap on the touchscreen cable ZIF connector.
- With the pointed end of the spudger, pull the touchscreen cable from its connector on the motherboard.

Step 13



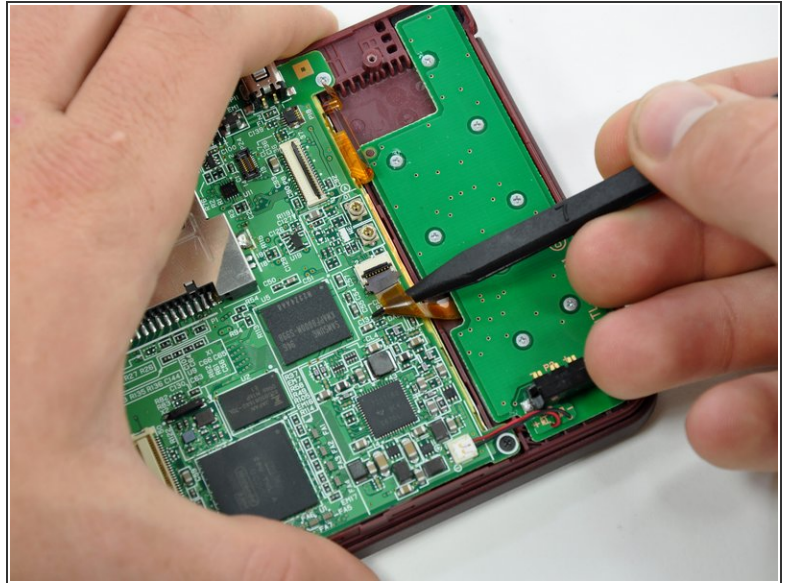
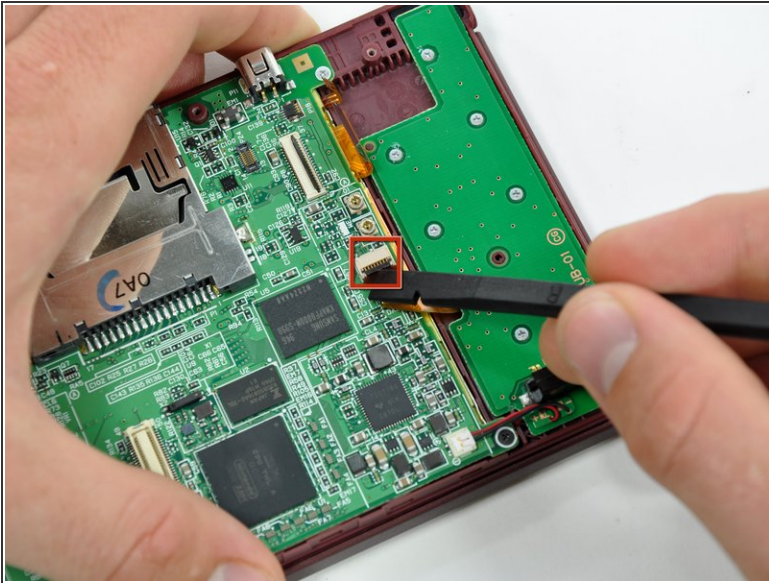
- Using the flat end of a spudger, flip up the retaining flap on the backlight cable ZIF connector.
- With the pointed end of the spudger, pull the backlight cable from its connector on the motherboard.

Step 14



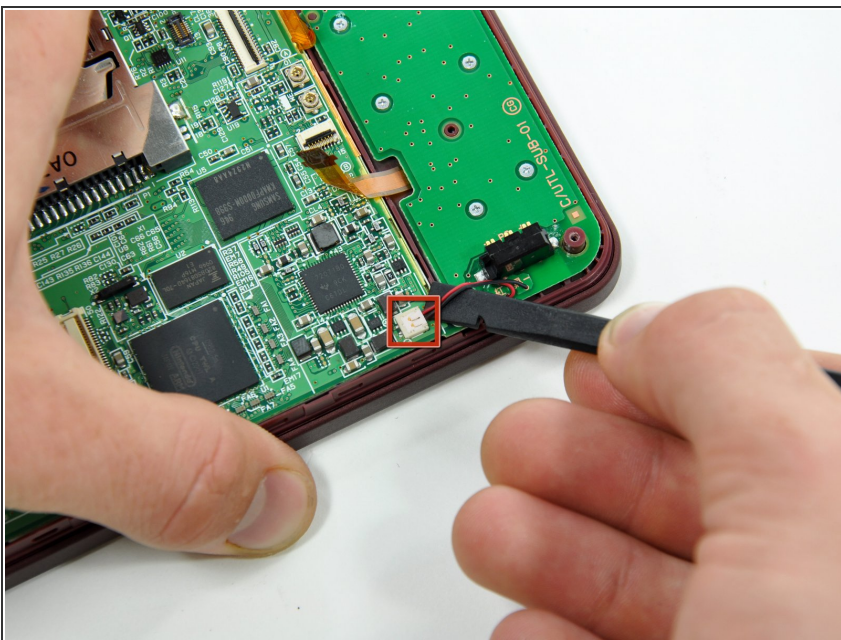
- Using the flat end of a spudger, flip up the retaining flap on the lower display data cable ZIF connector.
- With the pointed end of the spudger, pull the lower display data cable from its connector on the motherboard.

Step 15



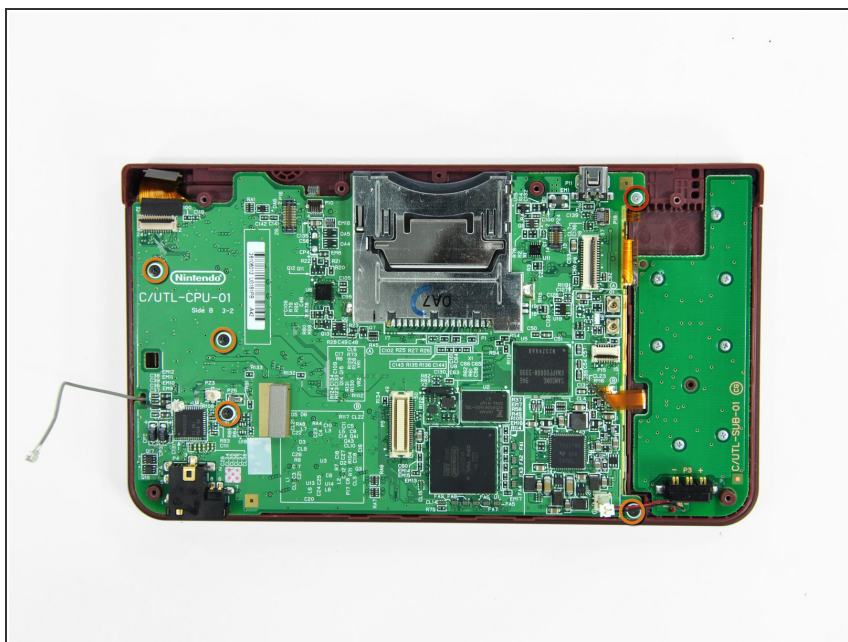
- Using the flat end of a spudger, flip up the retaining flap on the ZIF connector for the D-Pad/power button cable.
- With the pointed end of the spudger, pull the D-Pad/power button cable from its connector on the motherboard.

Step 16



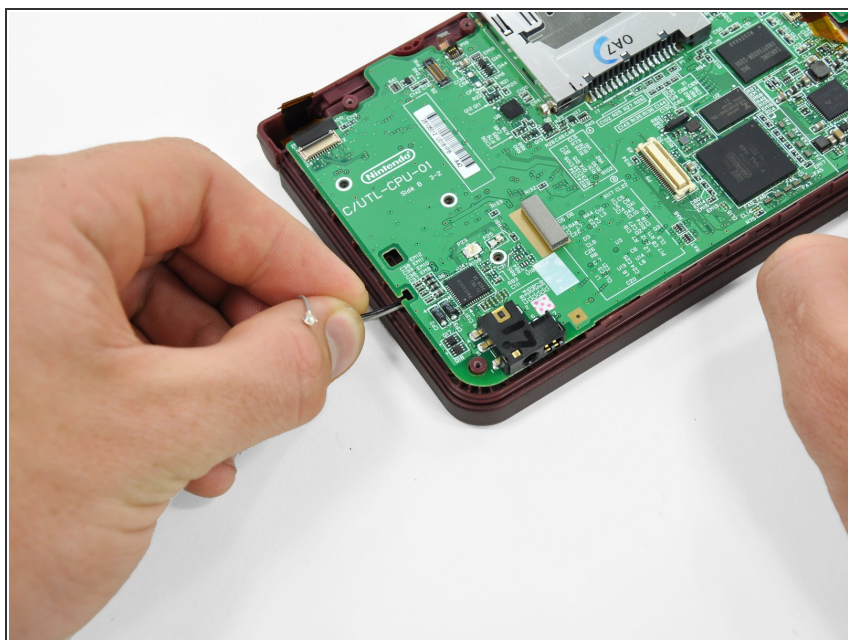
- Using the flat end of the spudger, pry the battery cable up off its socket on the motherboard.

Step 17



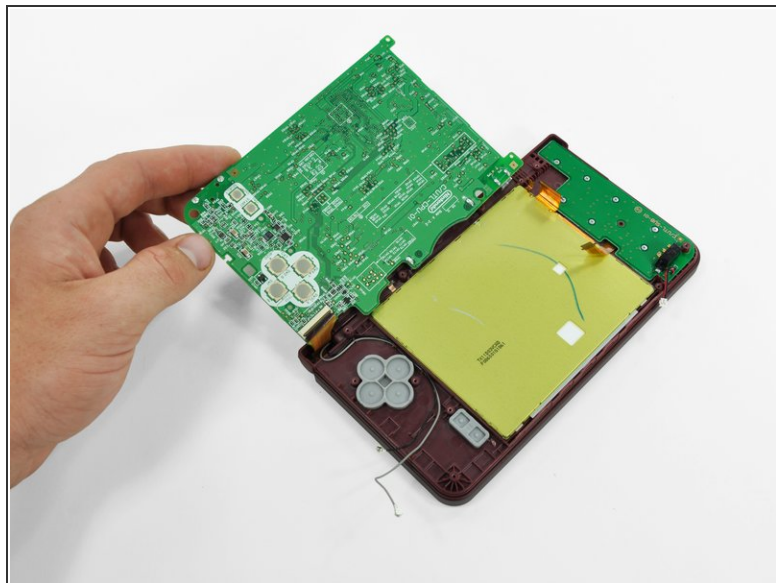
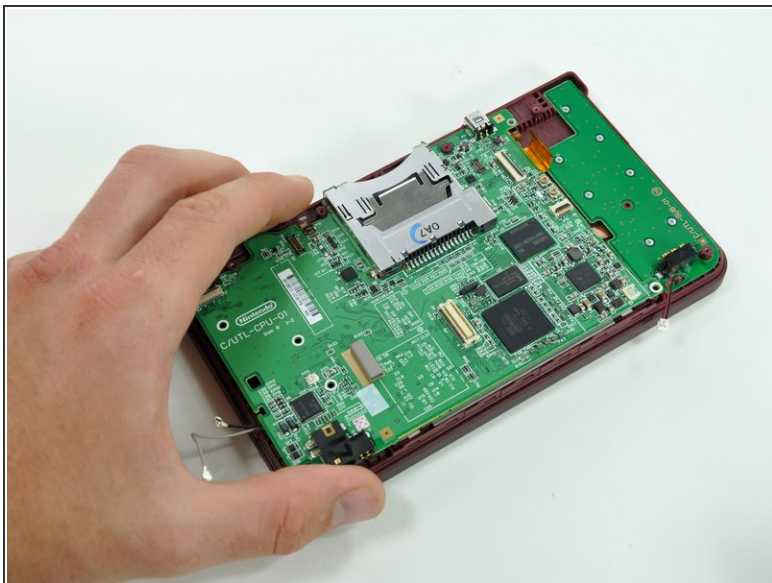
- Remove the screws securing the motherboard to the upper case:
 - A single 2.5 mm silver Phillips screw
 - Four 3.7 mm black Phillips screws

Step 18



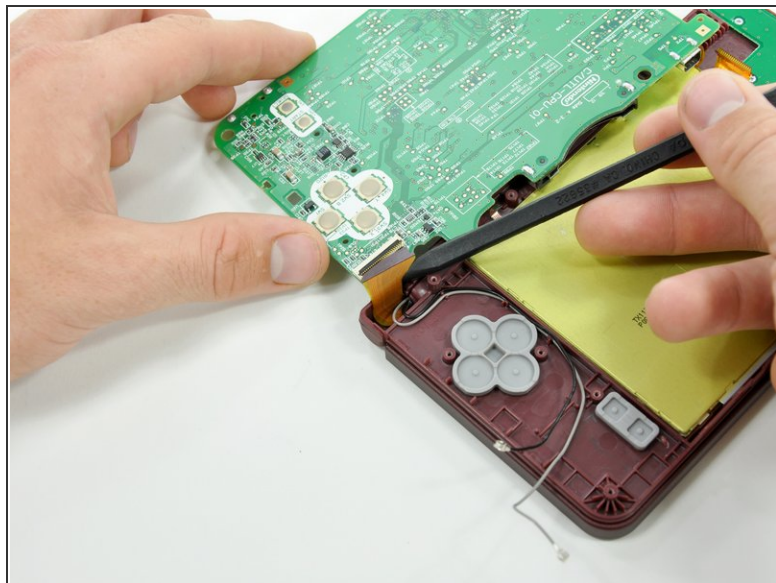
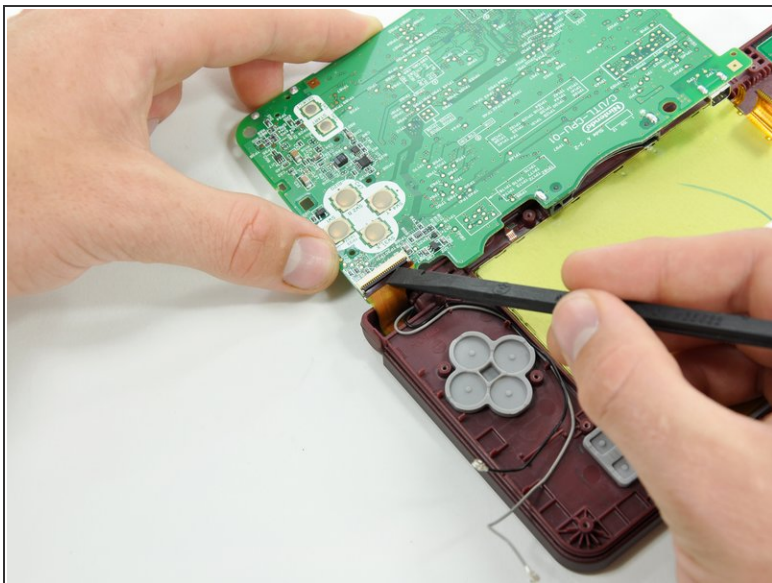
- Deroute the microphone and antenna cables through the slot in the motherboard.

Step 19



- Rotate the motherboard off the lower case.
- ⓘ The motherboard cannot be completely removed yet. It is still attached by the upper LCD's display data ribbon cable.

Step 20



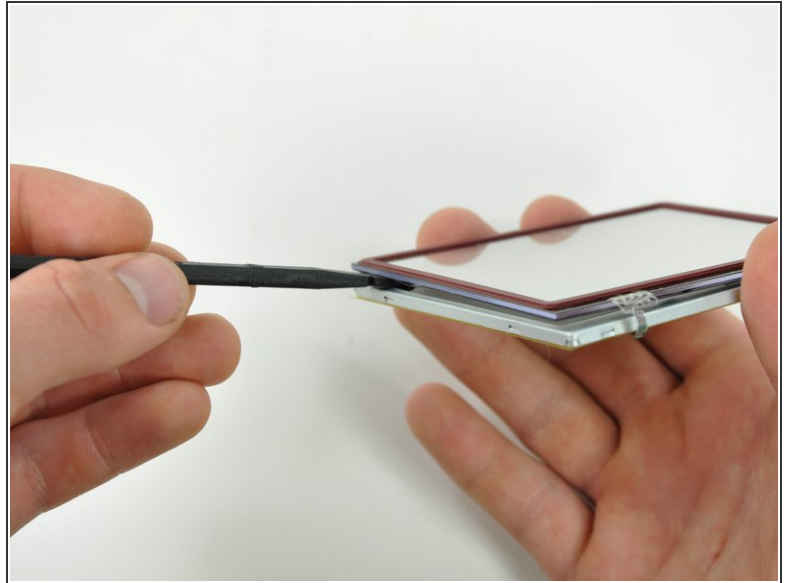
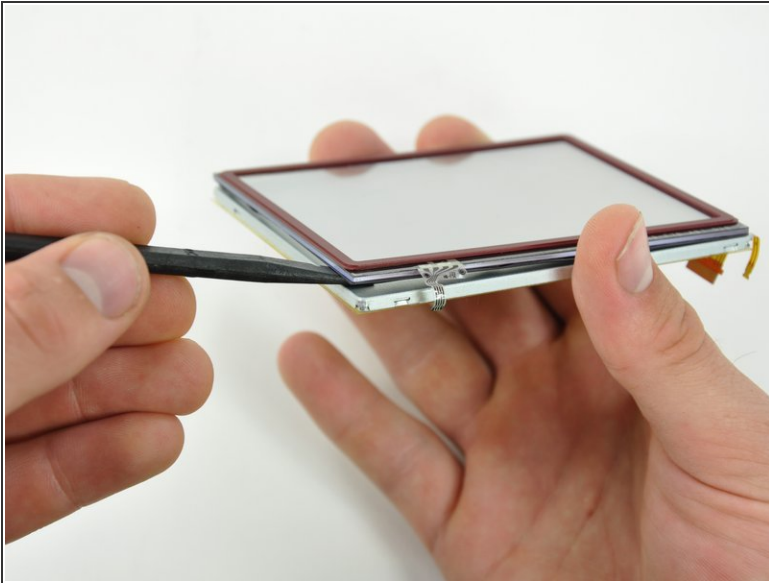
- Using the flat end of a spudger, flip up the retaining flap on the upper display data cable ZIF connector.
 - With the pointed end of the spudger, pull the upper display data cable from its connector on the underside of the motherboard.
- i** The motherboard is now free from the upper case.

Step 21 — Lower Display Assembly



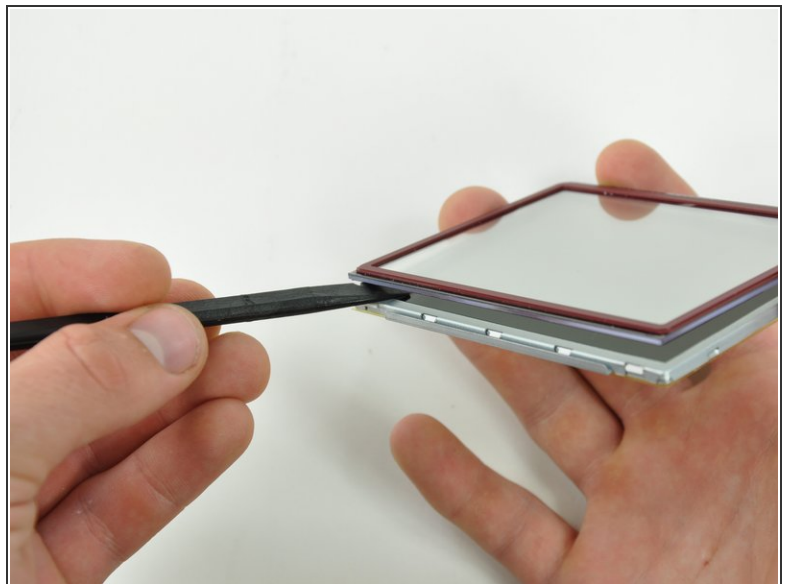
- With the console still upside-down, open the DSi XL slightly.
- Push the lower display away from the upper case.
- Remove the lower display from the DSi XL.

Step 22 — Lower LCD



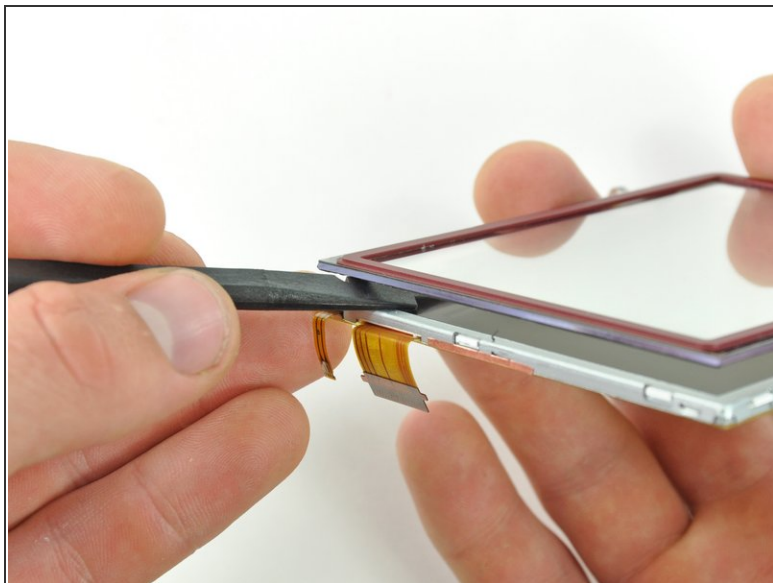
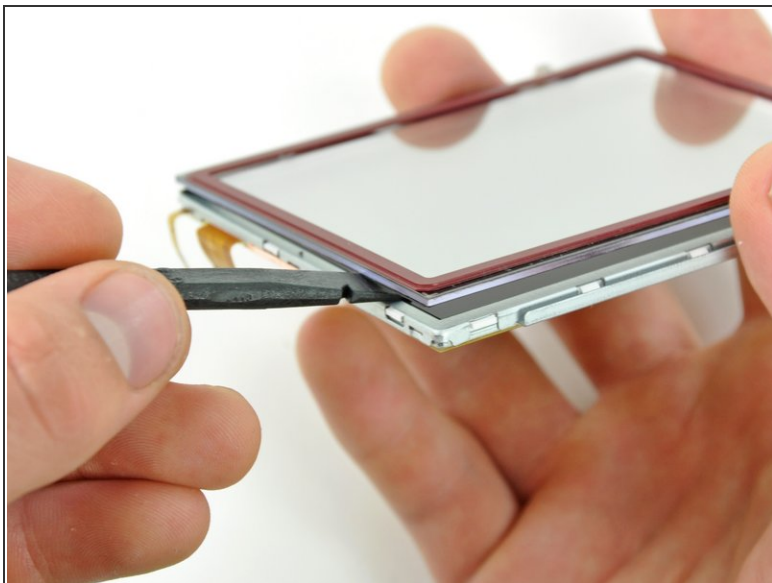
- Insert a spudger between the touchscreen and top right corner of the display.
- Slide the spudger down the right side of the display to free the edge of the touchscreen.

Step 23



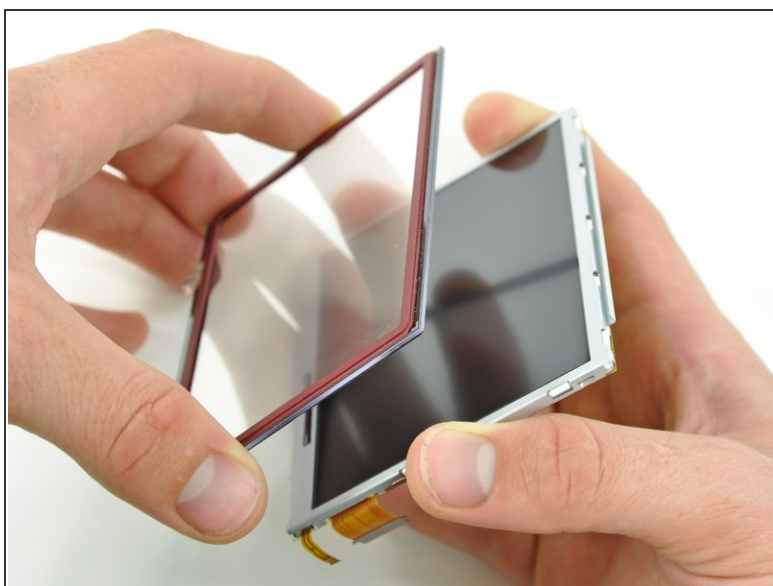
- Continue around the bottom right corner of the display with the spudger.
- Slide the spudger along the bottom edge of the touchscreen to separate it from the display.

Step 24



- Continue around the bottom left corner of the display with a spudger.
- Slide the spudger along the left edge of the touchscreen to remove it from the display.

Step 25



- With three sides freed, remove the touchscreen from the lower display.

To reassemble your device, follow these instructions in reverse order.