



# Finelife NV-023172 2 Slice Toaster Teardown

This guide shows how to teardown a 2 slice toaster. One might desire to take apart a toaster to take a stab at those morning people that are way too happy when they're making Eggo Waffles at 6 AM while everyone else is snoozing their alarms.

Written By: Kendall Searing



---

## INTRODUCTION

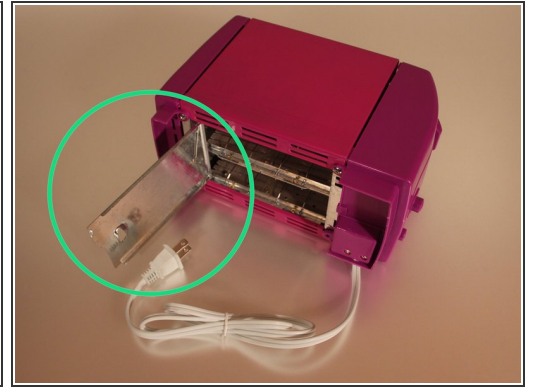
As with any electrical device, unplug it before beginning work. Many toasters contain heating elements that act as exposed wires connected directly to the mains power. Never stick your hand inside the toaster slots in a toaster. There is a high chance of touching a live wire and getting an electrical shock. One's hand can also get stuck, which would be awkward and embarrassing.




### TOOLS:

- [Phillips #2 Screwdriver](#) (1)
  - [Small Needle Nose Pliers](#) (1)
-

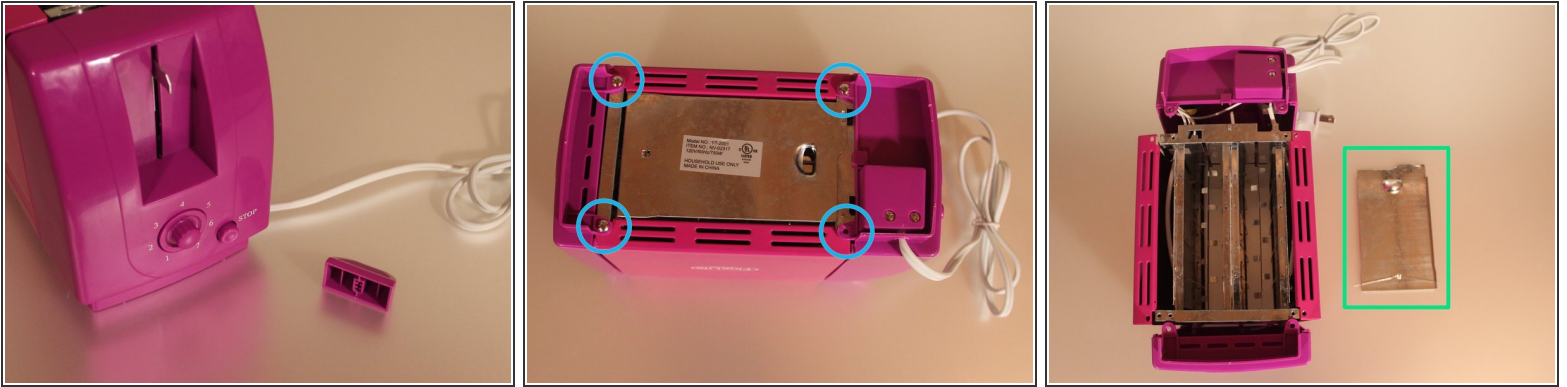
## Step 1 — Safety First And Supplies



 Make sure that the toaster is unplugged.

- Gather the required tools: a #2 Phillips screwdriver and a pair of small needle nose pliers
- Remove breadcrumbs, if any, through the breadcrumb hatch on the bottom of the toaster.

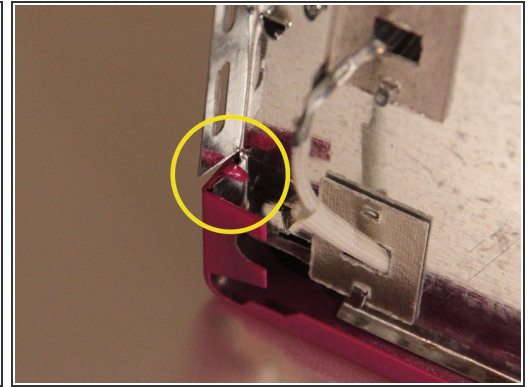
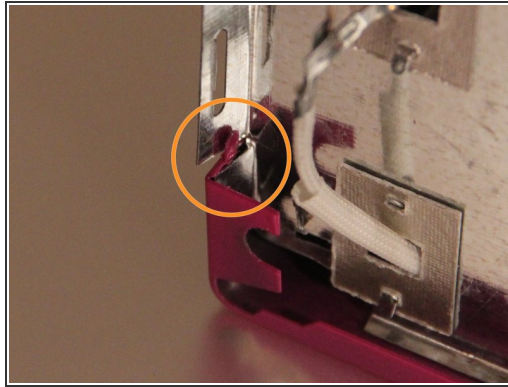
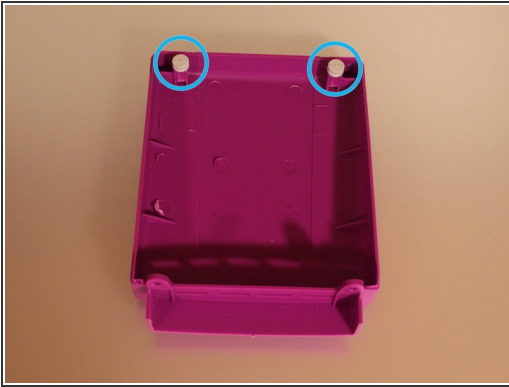
## Step 2 — Cracking the Shell



- Carefully pull the toaster lever straight off. It may require a fair amount of force and wiggling back and forth.
- Remove the 4 screws on the bottom of the toaster. One screw has already been removed in this picture. It was lost in a terrible screwing accident and will make no appearance in this guide.
- At this point the front and back plastic panels should fall away from the toaster. Do not worry if they do not; that will be addressed later in the guide.
- Pull the bread crumb tray out by pulling it towards the front and slightly away from the toaster. It is also possible to rip it out with brute force and repair any damage to the sheet metal with a pair of pliers

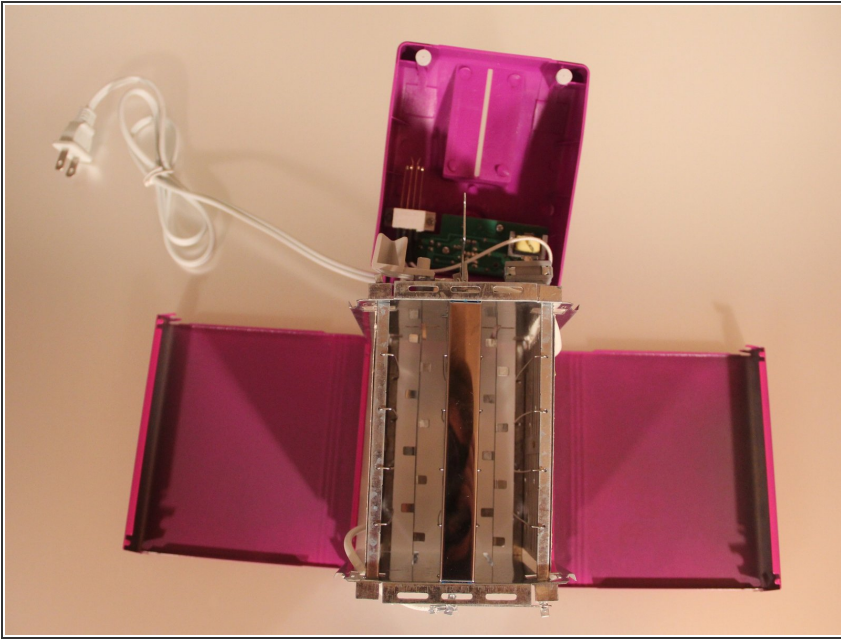


### Step 3 — A First Look Inside



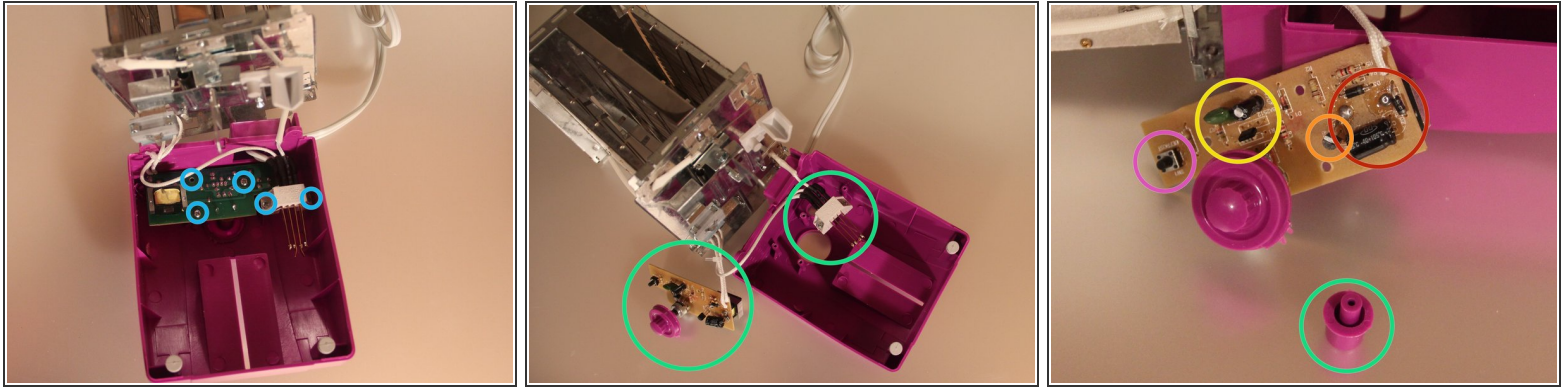
- Remove the front and back plastic panels. 2 plastic slides hold the panels to the toaster. Slide the panels straight down, towards the toaster bottom.
- ⓘ **Note:** the front panel is held on with several wires. The wires have enough slack to remove the panel. Do not put excessive force on the wires or they may break at the connections inside the toaster.
- Locate the 4 tabs at the top corners of the toaster.
- Bend the 4 tabs downward with the needle nose pliers to match the tab marked in yellow. Take care to not over stress the tabs and break them off.

## Step 4 — Full Case Removal



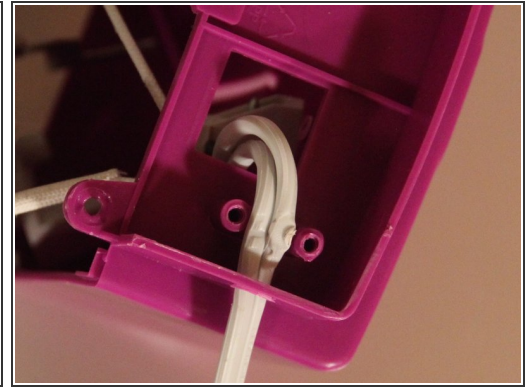
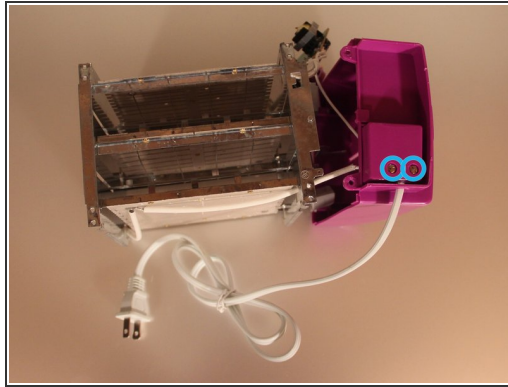
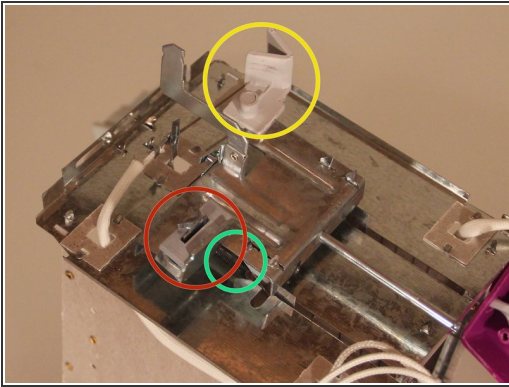
- One at a time, slide the metal side panels upwards and remove them from the toaster. The bottom flanges must be slightly bent outward to clear the toaster internals.
- If the panels do not remove cleanly, double check that the tabs mentioned in Step 3 are clear of the other sheet metal parts in the toaster.

## Step 5 — Investigating the Control Board



- Remove the 5 screws on the PCB and switch. Only 3 screws are visible in the guide. 1 is lost forever and 1 is hiding in shadows.
- Carefully pull the control board and power switch off. The knob is fixed to the control board potentiometer. The Stop button is only held in by the control board.
- The control board features:
  - Rectifier
  - Frequency Divider (produces a period of about 30 seconds)
  - Stop Button
  - Simple NPN Switch
  - Electromagnet (on back)

## Step 6 — Latch Mechanism and Strain Relief



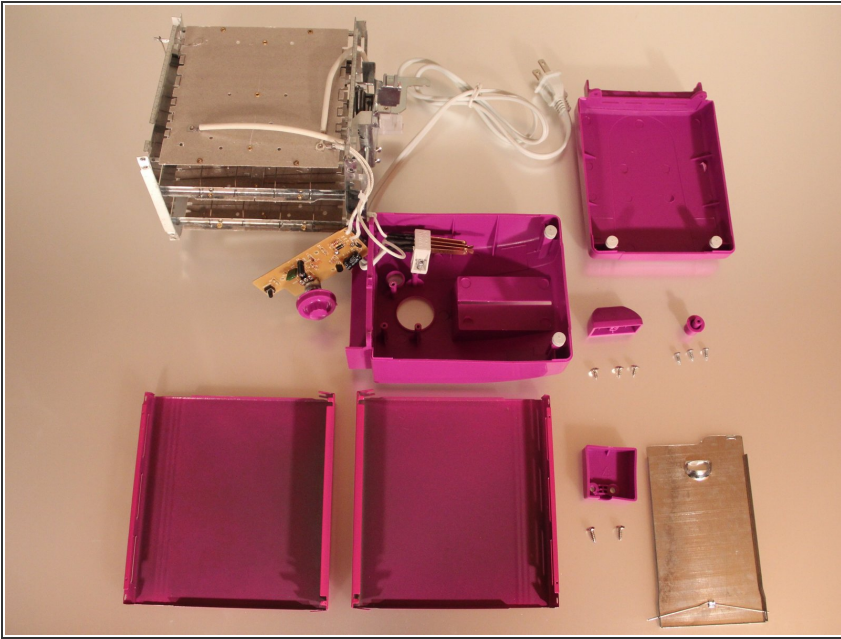
- The latch mechanism contains:
  - A ferromagnetic piece that the electromagnet holds
  - An arm to close the power switch
  - A spring to launch toast in a vertical direction

**Note:** The latch mechanism can be removed by further bending the sheet metal. This is not advised as it may be very difficult to bend the sheet metal back to its original position during reassembly.

- Pieces of electrical insulation board hold the wires. The heating elements are directly riveted to the boards and the boards are riveted to the sheet metal frame.
- The strain relief can be removed by undoing 2 screws (blue). The screws have a special head type. They can be gripped with small needle nose pliers or wire cutters.
- The strain relief cover comes straight off once the screws are removed



## Step 7 — Completed Teardown



- Congratulations! You have successfully torn down a 2 slice toaster.
- Adventurous teardowners can take apart the sheet metal case by twisting the metal tabs that lock it together, but that might cause permanent damage to the toaster.

To reassemble your device, follow these instructions in reverse order.