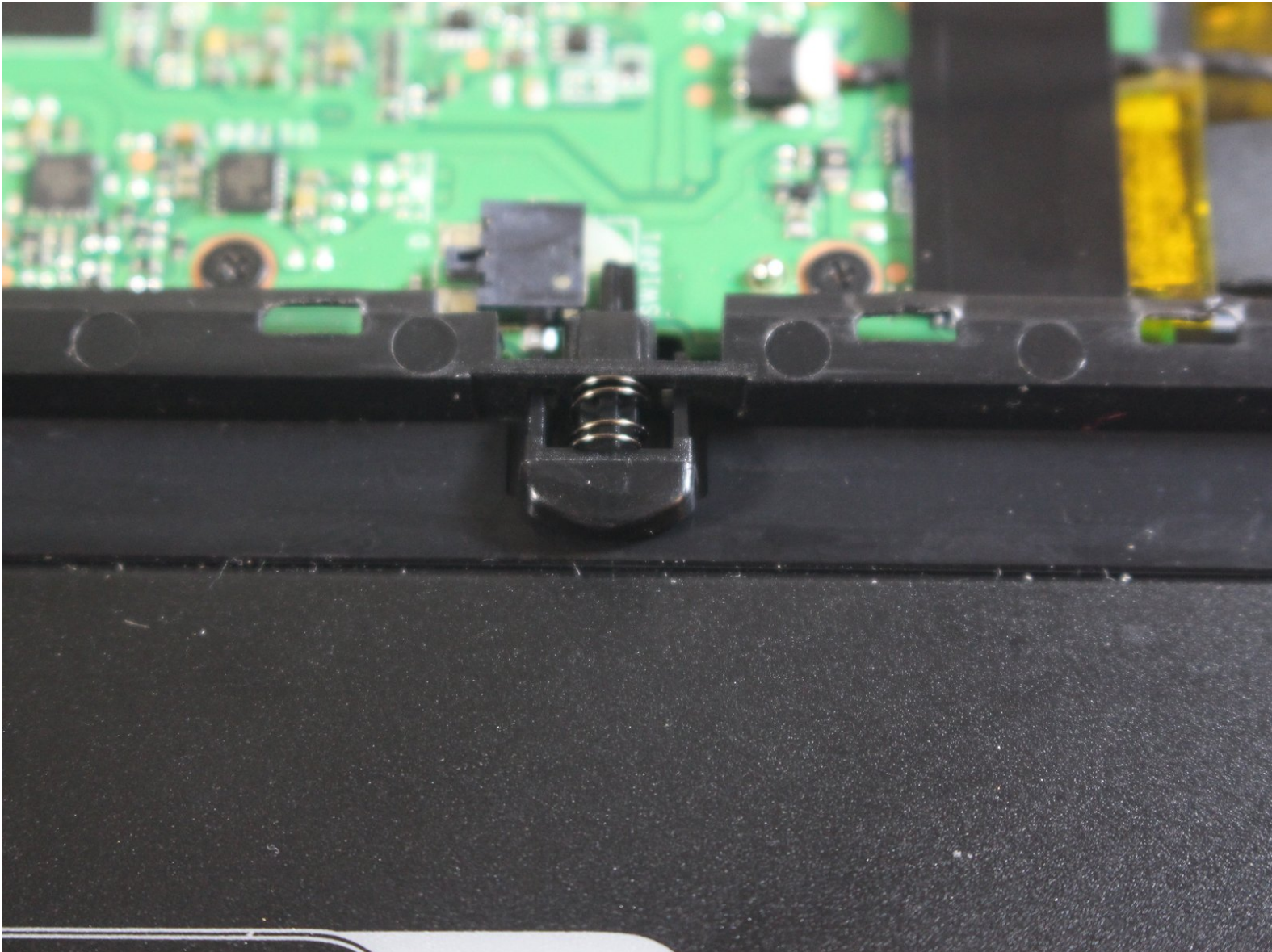




ASUS PadFone X Station Docking Indicator Device Replacement

This guide will have you remove the docking device indicator with a pair of tweezers.

Written By: Donnie Reynolds





TOOLS:

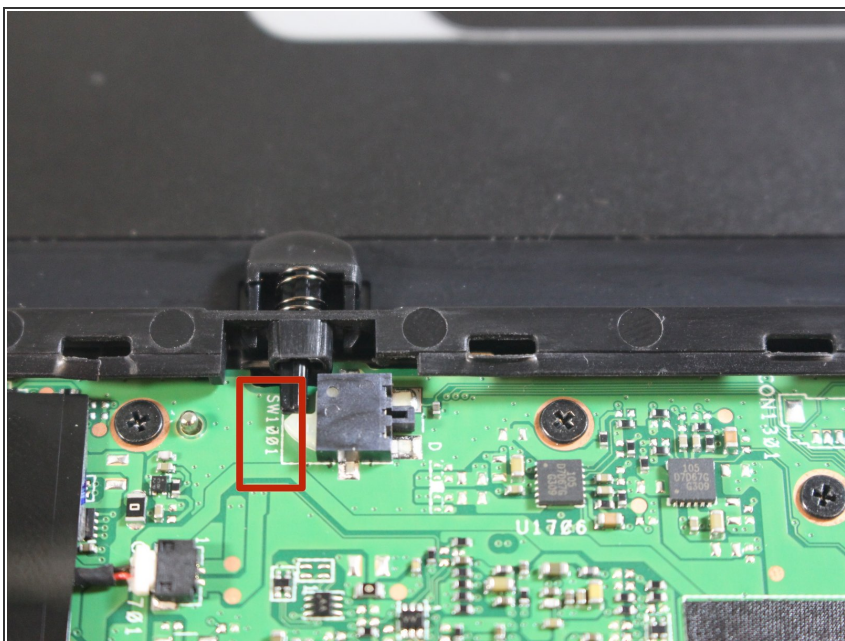
- [Tweezers](#) (1)
 - [iFixit Opening Tools](#) (1)
-

Step 1 — Back Cover



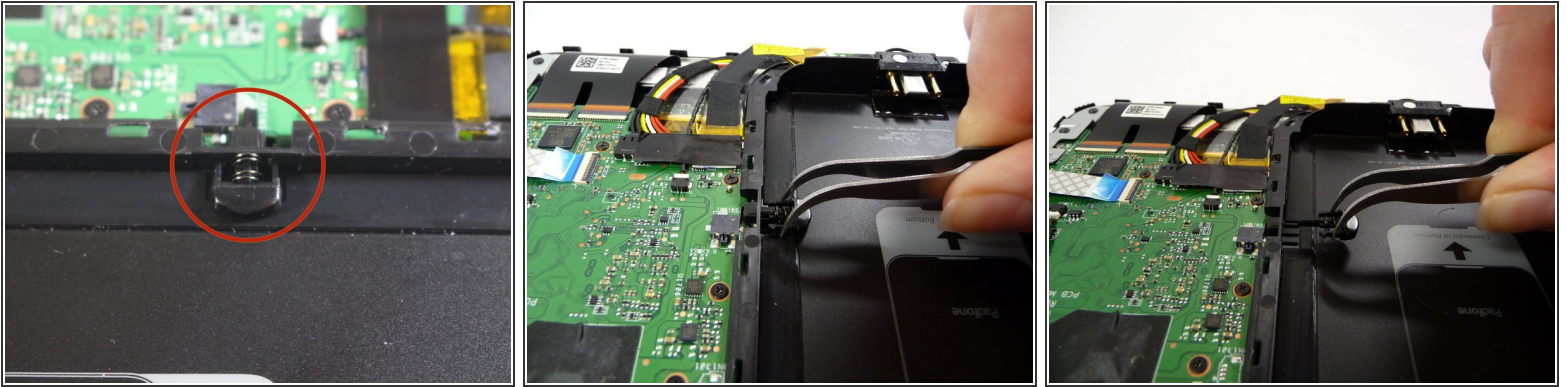
- Using the plastic opening tools, insert it into the edge and pry open.
- Use hands to help pull the back off from the front if needed.

Step 2 — Locate SW1001



- Locate SW1001

Step 3 — Locate docking indicator device



- With tweezers gently squeeze and remove docking indicator device

To reassemble your device, follow these instructions in reverse order.