



Mac Mini Late 2014 Hard Drive Assembly Replacement

Prereq to remove the hard drive

Written By: Sam Goldheart



INTRODUCTION

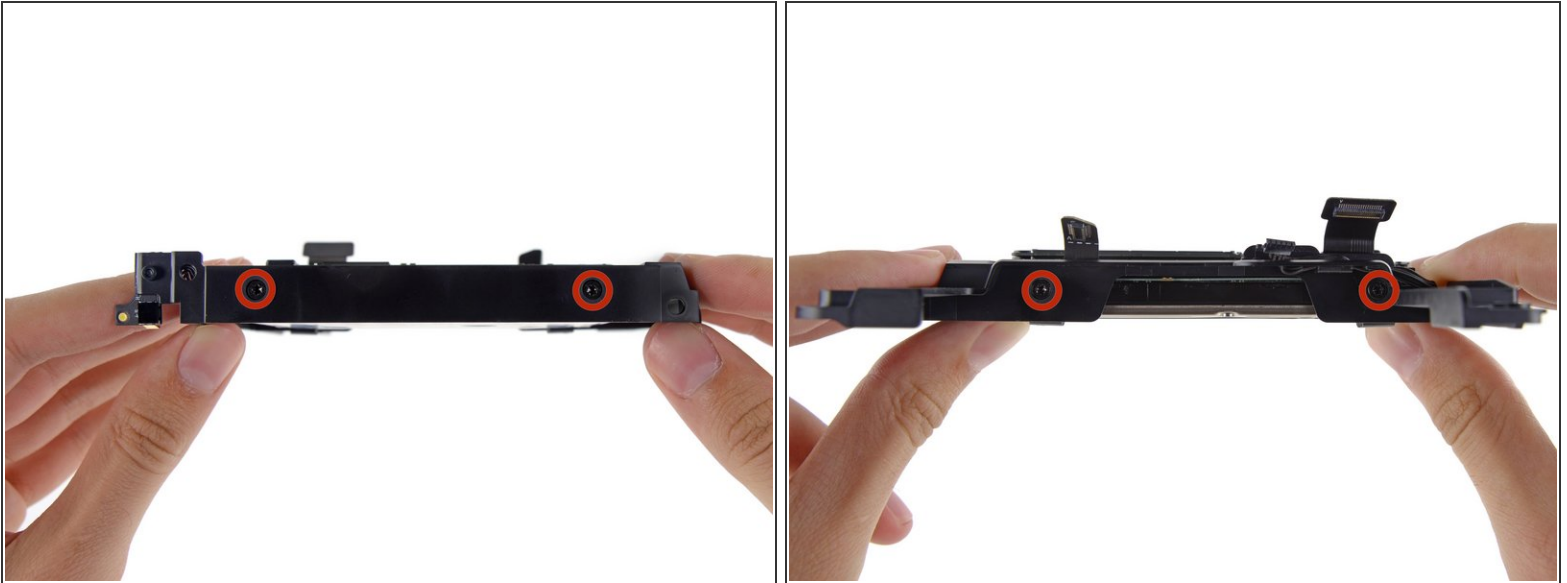
Prereq only



TOOLS:

- [T8 Torx Screwdriver](#) (1)
-

Step 1 — Hard Drive Assembly



- Remove the four (two on each side) 6.5 mm T8 screws securing the hard drive to the drive tray.

Step 2



- Lift the hard drive up and remove it from the drive tray.
- ☞ During reassembly, be sure to thread the hard drive cable through the slot in the drive tray.

To reassemble your device, follow these instructions in reverse order.